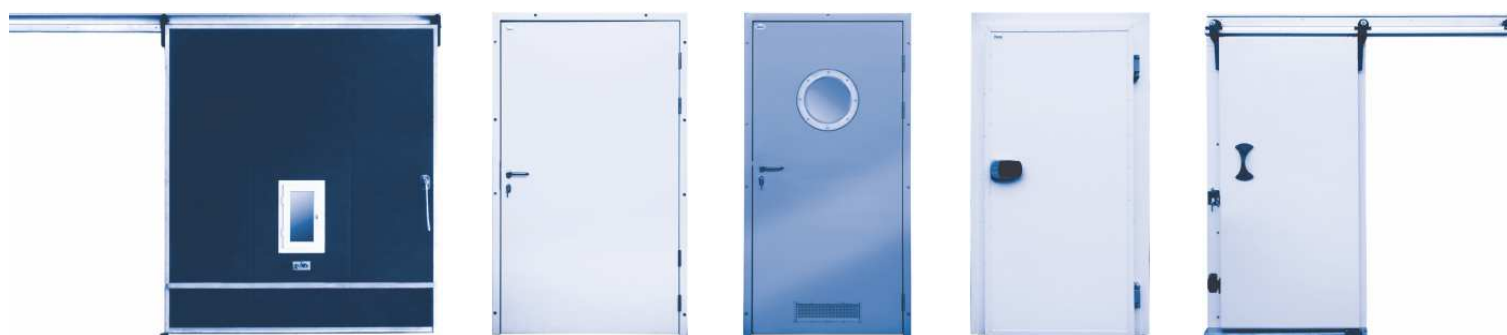


# INDUSTRIAL DOORS

- COLDROOM AND FREEZER DOORS
- GAS-TIGHT SLIDING DOORS
- SWING DOORS
- UNIVERSAL HINGED DOORS





# COLDROOM AND FREEZER HINGED DOOR “DR” TYPE



## APPLICATION

DR type door are applied in coldrooms and freezers within the temperature range from -25°C to +50°C. The structure of the door ensures its strength and durability. High insulation value has been achieved thanks to polyurethane foam core (PUR).

## DOOR LEAF

DR doors are produced in 3 versions. In DRE (ECO) and DRS (STANDARD) version door leaf is made of sandwich panel with PUR core and framed by steel channel section. In DRK (PREMIUM) version door leaf is produced on the press, by high pressure injection of PUR foam into door framework. The density of PUR core is not less than 40kg/m<sup>3</sup>.

### Available thicknesses:

- 60, 80mm - coldroom door (single and double leaf)
- 100mm, 120mm - freezer door (single leaf)

### ECO and STANDARD door leaf finish (sandwich panel):

- Galvanized steel sheet (L) thickness 0,5mm, coated with polyester paint in white colour RAL 9010

### PREMIUM door leaf finish:

- Stainless, acid-proof steel (N), type 1.4301, thickness 0,8mm, mat surface 2B
- Galvanized steel sheet (L) thickness 0,75mm, coated with polyester paint in white colour RAL 9010

## FRAME TYPE

In DRE and DRS version door frame is filled with PUR foam. It is made of stainless, acid-proof steel (N), type 1.4301, thickness 0,8mm, mat surface 2B or galvanized steel sheet (L) thickness 0,75mm, coated with polyester paint in white colour (RAL 9010).

Freezer door frame and threshold are equipped in heating system (heating cable, 230V, 40W/rm)

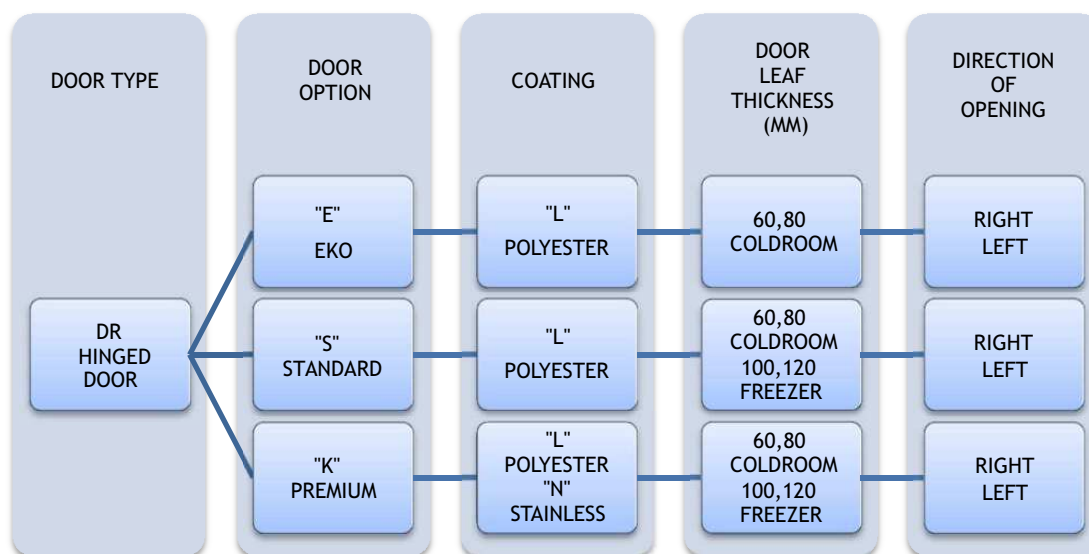
DRE version is equipped in angle bar shaped frame, which is made of galvanized steel sheet (L) thickness 0,75mm, coated with polyester paint in white colour (RAL 9010).

## HINGES

Hinges are delivered by FERMOD. Thanks to door lifting option during opening and closing the hinges prevent the lower gasket from friction.

## OPTIONS

- Untypical door leaf finish:
  - Stainless, acid-proof steel (N), type 1.4301, thickness 0,8mm, grinded surface 4B or grained surface
  - Galvanized steel sheet (L) thickness 0,75mm, coated with polyester paint other than white RAL 9010
  - Polyester laminate PECOLIT in RAL 9016 with stainless, acid-proof door leaf framing (N), type 1.4301
- Availability to produce door with and without a threshold (lower element is installed in the floor):
- Door windows
  - Round window ø280mm
  - Window in a different shape and dimension (special enquiry)
  - Execution of opening for a individual glazing
- Door adjusted to top railway system
- Flashing of the door opening



Enquiry/order example:



DRK-L 60 - coldroom hinged door, polyester paint finish, door leaf thickness 60mm, direction of opening to the right.

# HINGED DOORS ECO DRE-L 60 T>0°C (COLDROOM)

## Characteristic:

- Door leaf made of sandwich panel with PUR core 60mm
- Door finish - galvanized steel sheet coated with polyester paint in white colour RAL 9010
- Door leaf framing - steel channel section, made of steel sheet coated with polyester paint in white colour RAL 9010
- Lock - delivered by FERMOD
- Hinges - delivered by FERMOD
- Frame - angle bar shaped, made of steel sheet coated with polyester paint in RAL 9010

DRE-L 60 SINGLE LEAF								
S \ H	1700	1800	1900	2000	2100	2200	2300	2400
700	307	312	317	321	326	331	336	341
800	309	314	318	323	328	333	338	343
900	311	316	321	325	330	335	340	345
1000	315	320	325	330	335	340	345	350
1100	319	324	329	334	340	345	350	355
1200	340	347	354	361	367	374	381	388
1300	372	381	389	398	406	415	424	432
1400	374	383	391	400	408	417	426	434
1500	376	384	393	402	410	419	428	436

DRE-L 60 DOUBLE LEAF						
S \ H	2000	2100	2200	2300	2400	2500
1400	539	548	556	565	574	582
1600	543	551	560	569	578	586
1800	546	555	564	572	581	590
2000	554	563	572	581	590	599
2200	562	571	581	590	599	608
2400	629	642	654	666	679	691
2600	696	712	727	743	758	774

# STANDARD HINGED DOOR - POLYESTER

## DRS-L 60 T>0 °C (COLDROOM)

### Characteristic:

- **Door leaf** made of sandwich panel with PUR core 60mm
- **Door finish** - galvanized steel sheet coated with polyester paint in white colour RAL 9010
- **Door leaf framing** - steel channel section, made of steel sheet coated with polyester paint in white colour RAL 9010
- **Lock** - delivered by FERMOD
- **Hinges** - delivered by FERMOD
- **Frame** - complex and profiled, made of steel sheet coated with polyester paint in RAL 9010
- **Lower element** - channel section made of stainless, acid-proof steel sheet, type 1.4301

DRS-L 60 SINGLE LEAF									
s \ H	1700	1800	1900	2000	2100	2200	2300	2400	2500
700	409	415	421	427	433	456	480	503	526
800	421	427	433	440	446	471	496	521	546
900	432	439	446	452	459	486	512	539	565
1000	444	451	458	465	472	500	529	557	585
1100	455	463	470	478	486	515	545	575	605
1200	464	473	481	490	498	530	563	595	628
1300	476	485	494	503	512	546	580	614	648
1400	488	497	507	516	525	561	597	632	668
1500	500	510	519	529	539	576	614	651	688

DRS-L 80 DOUBLE LEAF						
s \ H	2000	2100	2200	2300	2400	2500
1400	802	813	824	835	846	857
1600	830	842	854	865	877	889
1800	857	870	883	896	909	922
2000	885	899	913	926	940	954
2200	913	928	942	957	972	986
2400	941	956	972	988	1003	1019
2600	969	985	1002	1018	1035	1051

### Options:

- door leaf made of PUR sandwich panel thickness 80 mm - surcharge of 10 EUR/m<sup>2</sup>
- window, size 400 mm x 600 mm - surcharge of 100 EUR

## PREMIUM HINGED DOORS - POLYESTER DRK-L 60 T>0 °C (COLDROOM)

### Characteristic:

- **Door leaf thickness** 60mm, produced on the press, by high pressure injection of PUR foam into door framework
- **Door finish** - galvanized steel sheet coated with polyester paint in white colour RAL 9010
- **Door leaf core** - polyurethane foam, density of minimum 40kg/m<sup>3</sup>
- **Lock** - delivered by FERMOD
- **Hinges** - delivered by FERMOD
- **Frame** - complex and profiled, made of steel sheet coated with polyester paint in RAL 9010
- **Lower element** - channel section made of stainless, acid-proof steel sheet, type 1.4301

DRK-L 60 SINGLE LEAF									
S \ H	1700	1800	1900	2000	2100	2200	2300	2400	2500
700	454	464	475	485	495	505	516	526	537
800	466	473	480	487	500	513	527	540	553
900	478	486	493	501	514	528	542	555	569
1000	511	515	519	522	564	570	577	584	591
1100	554	563	572	580	589	598	607	615	624
1200	558	566	575	584	593	610	617	624	631
1300	576	587	597	608	618	629	637	645	654
1400	589	599	609	619	629	640	647		
1500	601	612	623	633	644	655			

DRK-L 80 DOUBLE LEAF						
S \ H	2000	2100	2200	2300	2400	2500
1400	928	939	950	961	972	983
1500	937	952	968	983	998	1014
1600	947	966	985	1005	1024	1044
1700	966	984	1006	1029	1051	1074
1800	985	1002	1027	1053	1078	1104
1900	1003	1020	1049	1077	1105	1134
2000	1023	1038	1070	1101	1132	1164
2100	1028	1056	1086	1116	1146	1194
2200	1034	1074	1103	1131	1159	
2300	1037	1092	1140	1146	1173	
2400	1040	1109	1179			
2500	1043	1127	1216			

### Options:

- door leaf made of PUR sandwich panel thickness 80 mm - surcharge of 20 EUR/m<sup>2</sup>
- window, size 400 mm x 600 mm - surcharge of 100 EUR
- door made in colour other than RAL 9010 - surcharge of 50 EUR/m<sup>2</sup>

## PREMIUM HINGED DOORS - STAINLESS

### DRK-N 60 T>0°C (COLDROOM)

#### Characteristic:

- **Door leaf** thickness 60 mm, produced on the press, by high pressure injection of PUR foam into door framework
- **Door finish** - stainless, acid-proof steel, type 1.4301, mat surface 2B or grinded surface 4N (option)
- **Door leaf core** - polyurethane foam, density of minimum 40kg/m<sup>3</sup>
- **Lock** - delivered by FERMOD
- **Hinges** - delivered by FERMOD
- **Frame** - complex and profiled, made of stainless, acid-proof mat surface 2B or grinded surface 4N (option)
- **Lower element** - channel section made of stainless, acid-proof steel sheet, type 1.4301

DRK-N 60 SINGLE LEAF									
s \ H	1700	1800	1900	2000	2100	2200	2300	2400	2500
700	604	605	621	637	652	668	683	699	713
800	626	641	656	672	686	701	715	729	744
900	648	664	680	695	711	727	743	759	775
1000	677	696	715	734	750	766	781	796	812
1100	720	738	756	774	792	811	829	847	866
1200	742	765	788	811	834	853	870	886	902
1300	780	803	826	848	871	894	915	935	955
1400	810	832	855	878	900	923	939		
1500	839	862	884	906	929	951			

DRK-N 80 DOUBLE LEAF						
s \ H	2000	2100	2200	2300	2400	2500
1400	1207	1244	1281	1318	1354	1391
1500	1227	1263	1300	1337	1374	1410
1600	1246	1283	1320	1356	1393	1429
1700	1286	1317	1355	1392	1430	1468
1800	1325	1351	1390	1428	1467	1506
1900	1364	1385	1425	1465	1504	1544
2000	1404	1419	1460	1501	1542	1582
2100	1443	1453	1479	1519	1560	1621
2200	1482	1487	1497	1538	1579	
2300	1502	1525	1550	1556	1597	
2400	1522	1563	1603			
2500	1541	1600	1657			

#### Options:

- door leaf thickness 80 mm - surcharge of 20 EUR/m<sup>2</sup>
- window, size 400 mm x 600 mm - surcharge of 100 EUR
- grained door surface - surcharge of 16%



## STANDARD HINGED DOOR - POLYESTER DRS-L 100 T>-25 °C (FREEZER)

### Characteristic:

- **Door leaf** made of sandwich panel with PUR core 100mm
- **Door finish** - galvanized steel sheet coated with polyester paint in white colour RAL 9010
- **Door leaf framing** - steel channel section, made of steel sheet coated with polyester paint in white colour RAL 9010
- **Lock** - delivered by FERMOD
- **Hinges** - delivered by FERMOD
- **Frame** - complex and profiled, made of steel sheet coated with polyester paint in RAL 9010
- **Lower element** - channel section made of stainless, acid-proof steel sheet, type 1.4301

DRS-L 100 SINGLE LEAF									
s \ H	1700	1800	1900	2000	2100	2200	2300	2400	2500
700	540	548	555	563	571	590	610	630	650
800	555	566	576	587	598	613	629	644	660
900	571	584	598	611	624	636	648	659	670
1000	587	598	610	621	633	648	663	679	694
1100	605	615	625	635	645	665	685	705	725
1200	612	625	637	650	663	680	697	714	731
1300	618	634	650	665	681	700	718	738	
1400	644	660	677	693	710	724	738		
1500	670	687	704	721	738	746			

### Options:

- door leaf made of PUR sandwich panel thickness 120 mm - surcharge of 10 EUR/m<sup>2</sup>
- window, size 400 mm x 600 mm - surcharge of 100 EUR

## PREMIUM HINGED DOORS - POLYESTER DRK-L 100 T>-25 °C (FREEZER)

### Characteristic:

- **Door leaf** thickness 100mm, produced on the press, by high pressure injection of PUR foam into door framework
- **Door finish** - galvanized steel sheet coated with polyester paint in white colour RAL 9010
- **Door leaf core** - polyurethane foam, density of minimum 40kg/m<sup>3</sup>
- **Lock** - delivered by FERMOD
- **Hinges** - delivered by FERMOD
- **Frame** - complex and profiled, made of steel sheet coated with polyester paint in RAL 9010
- **Lower element** - channel section made of stainless, acid-proof steel sheet, type 1.4301

DRK-L 100 SINGLE LEAF									
s \ H	1700	1800	1900	2000	2100	2200	2300	2400	2500
700	623	634	645	656	667	678	689	699	710
800	643	655	666	678	690	701	713	725	736
900	663	675	688	700	713	725	738	750	763
1000	694	711	728	744	780	796	802	803	803
1100	726	739	753	767	801	802	812	828	844
1200	757	774	791	808	825	840	855	870	885
1300	780	797	813	830	847	864	875	886	
1400	802	820	837	854	871	888	898		
1500	825	842	859	877	894	912			

### Options:

- door leaf made of PUR sandwich panel thickness 120 mm - surcharge of 20 EUR/m<sup>2</sup>
- window, size 400 mm x 600 mm - surcharge of 100 EUR
- door made in colour other than RAL 9010 - surcharge of 50 EUR/m<sup>2</sup>

## PREMIUM HINGED DOORS - STAINLESS

### DRK-N 100 T>-25 °C (FREEZER)

#### Characteristic:

- **Door leaf** thickness 100mm, produced on the press, by high pressure injection of PUR foam into door framework
- **Door finish** - stainless, acid-proof steel, type 1.4301, mat surface 2B or grinded surface 4N (option)
- **Door leaf core** - polyurethane foam, density of minimum 40kg/m<sup>3</sup>
- **Lock** - delivered by FERMOD
- **Hinges** - delivered by FERMOD
- **Frame** - complex and profiled, made of stainless, acid-proof mat surface 2B or grinded surface 4N (option)
- **Lower element** - channel section made of stainless, acid-proof steel sheet, type 1.4301

DRK-N 100 SINGLE LEAF									
s \ H	1700	1800	1900	2000	2100	2200	2300	2400	2500
700	825	845	866	887	908	929	950	971	991
800	856	878	899	921	944	967	990	1012	1035
900	888	911	934	958	982	1006	1031	1055	1079
1000	936	963	990	1017	1041	1070	1098	1127	1155
1100	985	1008	1032	1056	1079	1117	1155	1193	1231
1200	1033	1060	1087	1113	1140	1167	1214	1260	1307
1300	1066	1094	1122	1150	1179	1207	1232	1261	
1400	1098	1128	1157	1187	1217	1246	1297		
1500	1131	1162	1193	1224	1255	1286			

#### Options:

- door leaf made of PUR sandwich panel thickness 120 mm - surcharge of 20 EUR/m<sup>2</sup>
- window, size 400 mm x 600 mm - surcharge of 100 EUR
- grained door surface - surcharge of 16%



## COLDROOM AND FREEZER SLIDING DOORS, “DP” TYPE

### APPLICATION

DP doors are applied in coldrooms and freezers within the temperature from  $-25^{\circ}\text{C}$  to  $+50^{\circ}\text{C}$ . The structure of the door ensures its strength and durability. High insulation value has been achieved thanks to polyurethane foam core (PUR).

DPG - lightweight, up to 120 kg

DPG - heavyweight, up to 200 kg

### DOOR LEAF

DP doors are available in 2 versions: In DPS (STANDARD) version door leaf is made of sandwich panel with PUR core and framed by steel channel section. In DPK (PREMIUM) version door leaf is produced on the press, by high pressure injection of PUR foam into door framework. The density of PUR core is not less than  $40\text{kg/m}^3$ .

#### Available thicknesses:

- 60, 80mm - coldroom door
- 100, 120mm - freezer door

#### STANDARD door leaf finish (sandwich panel):

- Galvanized steel sheet (L) thickness 0,5mm, coated with polyester paint in white colour RAL 9010

#### PREMIUM door leaf finish:

- Stainless, acid-proof steel (N), type 1.4301, thickness 0,8mm, mat surface 2B
- Galvanized steel sheet (L) thickness 0,75mm, coated with polyester paint in white colour RAL 9010

Door leaf is equipped with gasket delivered by FERMOD (F).

### FRAME TYPE

In both DPS and DPK version door frame is filled with PUR foam. It is made of stainless, acid-proof steel (N), type 1.4301, thickness 1,5mm, mat surface 2B or galvanized steel sheet (L) thickness 1,5mm, coated with polyester paint in white colour (RAL 9010).

Freezer door frame and threshold are equipped in heating system (heating cable, 230V, 40W/rm).

## LOCK

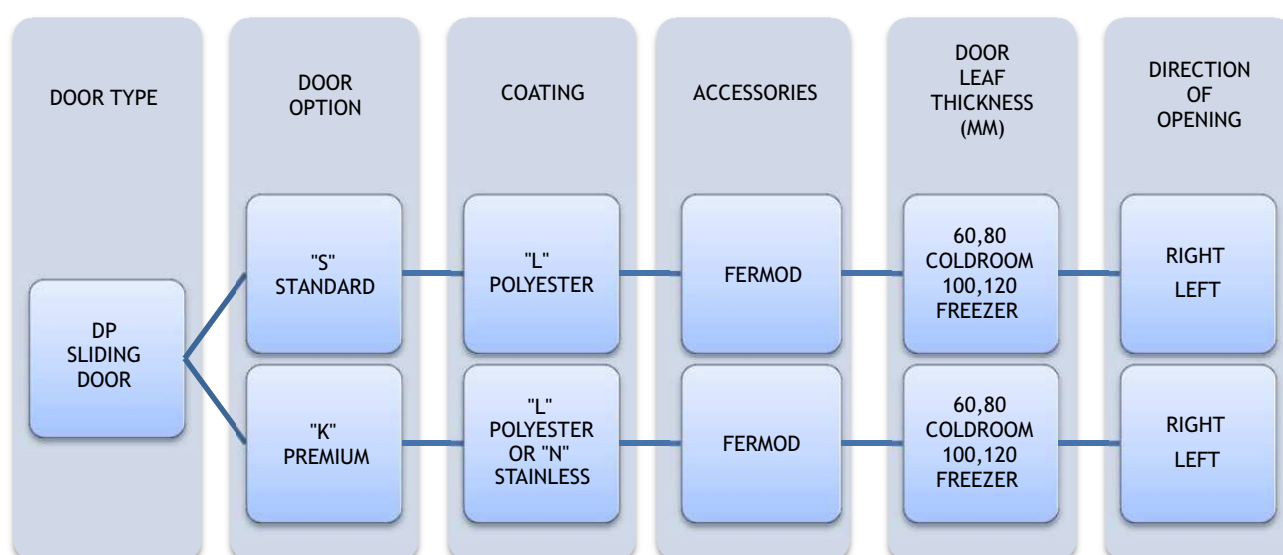
Lock is delivered by FERMOD (F). It is equipped with patent insert with possibility of emergency opening from the inside even if the door is locked.

## SUSPENSION SYSTEM

- FERMOD suspension system (F), aluminium rail - lightweight type
- FERMOD suspension system (F), galvanized steel or stainless steel rail - heavyweight type

## OPTIONS

- Untypical door leaf finish:
  - Stainless, acid-proof steel (N), type 1.4301, thickness 0,8mm, grinded surface 4B or grained surface
  - Galvanized steel sheet (T) thickness 0,75mm, coated with polyester paint other than white
  - Polyester laminate PECOLIT in RAL 9016 with stainless, acid-proof door leaf framing (N), type 1.4301
- Availability to produce door with and without a threshold (lower element is installed in the floor)
- Flashing of the door opening
- Application of automatic kits delivered by FERMOD (F)
- Door windows:
  - Round window ø280mm
  - Window in a different shape (special enquiry)
- Door adjusted to top railway system



Enquiry/order example:



**DPK-NF 60** - Premium coldroom sliding door, stainless steel finish, FERMOD accessories, door leaf thickness 60mm, direction of opening to the right.

# STANDARD SLIDING DOOR - POLYESTER - FERMOD ACCESSORIES - DPS-LF 60 T>0 °C (COLDROOM)

## Characteristic:

- Door leaf made of sandwich panel with PUR core 60mm
- Door finish - galvanized steel sheet, coated with polyester paint in white colour RAL 9010
- Door leaf framing - steel channel section, made of stainless, acid-proof steel sheet, type 1.4301
- Frame - complex and profiled, made of steel sheet coated with polyester paint in RAL 9010
- Accessories - delivered by FERMOD, made of aluminium
- Lower element - channel section made of stainless, acid-proof steel sheet, type 1.4301

DPS-LF 60 SINGLE LEAF								
S \ H	1800	1900	2000	2100	2200	2300	2400	2500
800	907	914	920	927	934	941	947	954
900	920	927	935	942	949	956	964	971
1000	933	941	949	957	964	972	980	988
1100	1028	1036	1045	1054	1062	1071	1079	1088
1200	1041	1050	1059	1068	1077	1087	1096	1105
1300	1067	1077	1087	1096	1106	1116	1126	1135
1400	1093	1104	1114	1124	1135	1145	1156	1166
1500	1121	1132	1143	1154	1165	1176	1187	1198
1600	1148	1160	1171	1183	1194	1206	1218	1229
1700	1268	1280	1293	1305	1317	1329	1341	1354
1800	1281	1294	1307	1319	1332	1345	1358	1371
1900	1314	1327	1341	1354	1365	1375	1385	1396
2000	1347	1361	1375	1389	1403	1417	1431	1445

S \ H	2500	2600	2700	2800	3000	3200	3400	3600	3800	4000
1500	1198	1223	1238	1253	1267	1290	1313	1335	1358	1381
1600	1229	1295	1310	1326	1341	1365	1388	1412	1436	1459
1700	1354	1366	1382	1399	1415	1440	1464	1489	1513	1538
1800	1371	1384	1401	1418	1435	1461	1487	1513	1538	1564
1900	1396	1402	1420	1438	1456	1483	1509	1536	1563	1590
2000	1445	1459	1479	1498	1517	1546	1574	1602	1630	1658
2200	1481	1500	1519	1539	1558	1588	1619	1650	1681	<b>1992</b>
2400	1557	1583	1609	1635	1661	1687	1713	1739	<b>2069</b>	<b>2104</b>
2600	1595	1618	1640	1662	1684	1744	1804	<b>2149</b>	<b>2182</b>	<b>2217</b>
2800	1719	1746	1773	1799	1826	1853	<b>2158</b>	<b>2202</b>	<b>2246</b>	<b>2290</b>
3000	1781	1806	1832	1857	1882	<b>2208</b>	<b>2247</b>	<b>2286</b>	<b>2324</b>	<b>2363</b>

Prices in bold refer to doors with heavy system

## Options:

- door leaf made of PUR sandwich panel thickness 80 mm - surcharge of 10 EUR/m<sup>2</sup>
- window, size 400 mm x 600 mm - surcharge of 100 EUR
- lock with patent insert with possibility of opening from the inside - surcharge of 150 EUR
- handle support (lever) for light-weight door - surcharge of 150 EUR (in heavy-weight door this option is included free of charge)

# STANDARD SLIDING DOOR - POLYESTER - FERMOD ACCESSORIES - DPS-LF 100 T> -25°C (FREEZER)

## Characteristic:

- Door leaf made of sandwich panel with PUR core 100mm
- Door finish - galvanized steel sheet, coated with polyester paint in white colour RAL 9010
- Door leaf framing - steel channel section, made of stainless, acid-proof steel sheet, type 1.4301
- Frame - complex and profiled, made of steel sheet coated with polyester paint in RAL 9010
- Accessories - delivered by FERMOD, made of aluminium
- Lower element - channel section made of stainless, acid-proof steel sheet, type 1.4301

DPS-LF 100 SINGLE LEAF								
S \ H	1800	1900	2000	2100	2200	2300	2400	2500
800	1022	1032	1042	1052	1061	1070	1079	1087
900	1037	1047	1058	1068	1078	1088	1098	1107
1000	1052	1063	1074	1085	1095	1106	1117	1128
1100	1155	1176	1183	1189	1201	1212	1223	1235
1200	1170	1182	1194	1206	1219	1231	1243	1255
1300	1199	1207	1215	1222	1239	1256	1272	1289
1400	1229	1242	1256	1269	1283	1296	1309	1323
1500	1257	1271	1286	1300	1314	1328	1342	1356
1600	1286	1301	1316	1330	1345	1360	1375	1390
1700	1410	1425	1441	1456	1472	1487	1503	1518
1800	1425	1441	1457	1473	1490	1506	1522	1538
1900	1461	1478	1495	1512	1528	1546	1562	1579
2000	1497	1515	1532	1550	1568	1585	1603	1620

S \ H	2500	2600	2700	2800	3000	3200	3400	3600	3800	4000
1500	1356	1384	1403	1421	1440	1469	1497	1525	1553	1582
1600	1390	1459	1478	1498	1518	1548	1577	1607	1637	1666
1700	1518	1534	1554	1575	1596	1627	1658	1689	1720	1751
1800	1538	1557	1577	1598	1619	1651	1684	1716	1749	1781
1900	1579	1575	1597	1620	1643	1676	1710	1744	1778	1811
2000	1620	1638	1661	1685	1708	1722	1735	1749	1763	1776
2200	1660	1684	1707	1731	1755	1775	1795	1816	1836	<b>2228</b>
2400	1741	1767	1792	1817	1843	1843	1904	1965	<b>2303</b>	<b>2346</b>
2600	1834	1861	1889	1916	1943	1987	2030	<b>2382</b>	<b>2423</b>	<b>2465</b>
2800	1887	1920	1952	1984	2016	2048	<b>2391</b>	<b>2443</b>	<b>2494</b>	<b>2545</b>
3000	1995	2015	2035	2076	2116	<b>2440</b>	<b>2486</b>	<b>2533</b>	<b>2579</b>	<b>2626</b>

Prices in bold refer to doors with heavy system

## Options:

- door leaf made of PUR sandwich panel thickness 120 mm - surcharge of 10 EUR/m<sup>2</sup>
- window, size 400 mm x 600 mm - surcharge of 100 EUR
- lock with patent insert with possibility of opening from the inside - surcharge of 150 EUR
- handle support (lever) for light-weight door - surcharge of 150 EUR (in heavy-weight door this option is included free of charge)

# PREMIUM SLIDING DOOR - POLYESTER - FERMOD ACCESSORIES - DPK-LF 60 T>0 °C (COLDROOM)

## Characteristic:

- **Door leaf thickness** 60mm, produced on the press, by high pressure injection of PUR foam into door framework
- **Door finish** - galvanized steel sheet coated with polyester paint in white colour RAL 9010
- **Door leaf core** - polyurethane foam, density of minimum 40kg/m<sup>3</sup>
- **Frame** - complex and profiled, made of steel sheet coated with polyester paint in RAL 9010
- **Accessories** - delivered by FERMOD, made of aluminium
- **Lower element** - channel section made of stainless, acid-proof steel sheet, type 1.4301

DPK-LF 60 SINGLE LEAF								
S \ H	1800	1900	2000	2100	2200	2300	2400	2500
<b>800</b>	1034	1041	1047	1054	1061	1068	1074	1081
<b>900</b>	1047	1054	1062	1069	1076	1083	1091	1098
<b>1000</b>	1060	1068	1076	1084	1091	1099	1107	1115
<b>1100</b>	1100	1109	1117	1126	1134	1143	1151	1160
<b>1200</b>	1140	1149	1159	1168	1177	1187	1196	1205
<b>1300</b>	1168	1177	1187	1196	1206	1216	1225	1235
<b>1400</b>	1195	1199	1202	1206	1210	1228	1247	1265
<b>1500</b>	1222	1233	1245	1257	1269	1280	1292	1304
<b>1600</b>	1248	1259	1271	1282	1293	1313	1332	1343
<b>1700</b>	1344	1357	1370	1383	1396	1409	1421	1435
<b>1800</b>	1440	1452	1464	1477	1489	1501	1514	1526
<b>1900</b>	1473	1486	1499	1511	1524	1537	1550	1563
<b>2000</b>	1506	1522	1537	1553	1569	1584	1600	1705

S \ H	2500	2600	2700	2800	3000
<b>1500</b>	1304	1316	1353	1391	1429
<b>1600</b>	1343	1382	1395	1421	1447
<b>1700</b>	1435	1514	1542	1590	<b>1984</b>
<b>1800</b>	1526	1582	1637	<b>1990</b>	<b>1999</b>
<b>1900</b>	1563	<b>1937</b>	<b>1981</b>	<b>2005</b>	<b>2028</b>
<b>2000</b>	1705	<b>1986</b>	<b>2025</b>	<b>2056</b>	<b>2087</b>
<b>2200</b>	<b>2001</b>	<b>2035</b>	<b>2070</b>	<b>2108</b>	<b>2146</b>
<b>2400</b>	<b>2128</b>	<b>2182</b>	<b>2237</b>	<b>2242</b>	<b>2248</b>

Prices in bold refer to doors with heavy system

## Options:

- door leaf thickness 80 mm - surcharge of 20 EUR/m<sup>2</sup>
- window, size 400 mm x 600 mm - surcharge of 100 EUR
- lock with patent insert with possibility of opening from the inside - surcharge of 150 EUR
- door made in colour other than RAL 9010 - surcharge of 50 EUR/m<sup>2</sup>
- handle support (lever) for light-weight door - surcharge of 150 EUR (in heavy-weight door this option is included free of charge)



# PREMIUM SLIDING DOOR - POLYESTER - FERMOD ACCESSORIES - DPK-LF 100 T>-25°C (FREEZER)

## Characteristic:

- Door leaf thickness 100mm, produced on the press, by high pressure injection of PUR foam into door framework
- Door finish - galvanized steel sheet coated with polyester paint in white colour RAL 9010
- Door leaf core - polyurethane foam, density of minimum 40kg/m<sup>3</sup>
- Frame - complex and profiled, made of steel sheet coated with polyester paint in RAL 9010
- Accessories - delivered by FERMOD, made of aluminium
- Lower element - channel section made of stainless, acid-proof steel sheet, type 1.4301

DPK-LF 100 SINGLE LEAF								
S \ H	1800	1900	2000	2100	2200	2300	2400	2500
800	1222	1232	1242	1253	1263	1273	1284	1294
900	1254	1265	1276	1287	1298	1309	1320	1331
1000	1287	1298	1310	1322	1334	1345	1357	1369
1100	1302	1314	1327	1339	1351	1364	1376	1388
1200	1318	1331	1343	1356	1369	1382	1395	1408
1300	1394	1409	1424	1439	1453	1468	1483	1498
1400	1469	1487	1504	1521	1538	1555	1572	1589
1500	1492	1509	1526	1543	1560	1577	1594	1611
1600	1514	1531	1548	1565	1582	1599	1616	1633
1700	1537	1554	1571	1588	1604	1621	1638	1655
1800	1602	1619	1636	1653	1671	1688	1705	1722
1900	1640	1659	1678	1697	1716	1735	1754	1773
2000	1679	1693	1708	1736	1765	1794	1823	1928

S \ H	2500	2600	2700	2800	3000
1500	1589	1596	1603	1611	1647
1600	1615	1616	1617	1637	1657
1700	1655	1682	1709	1714	<b>2263</b>
1800	1722	1746	1770	<b>2297</b>	<b>2305</b>
1900	1773	<b>2254</b>	<b>2280</b>	<b>2307</b>	<b>2334</b>
2000	1928	<b>2342</b>	<b>2371</b>	<b>2399</b>	<b>2428</b>
2200	<b>2400</b>	<b>2431</b>	<b>2461</b>	<b>2491</b>	<b>2522</b>
2400	<b>2487</b>	<b>2519</b>	<b>2552</b>	<b>2584</b>	<b>2616</b>

Prices in bold refer to doors with heavy system

## Options:

- door leaf thickness 120 mm - surcharge of 20 EUR/m<sup>2</sup>
- window, size 400 mm x 600 mm - surcharge of 100 EUR
- lock with patent insert with possibility of opening from the inside - surcharge of 150 EUR
- door made in colour other than RAL 9010 - surcharge of 50 EUR/m<sup>2</sup>
- handle support (lever) for light-weight door - surcharge of 150 EUR (in heavy-weight door this option is included free of charge)

# PREMIUM SLIDING DOOR - STAINLESS - FERMOD ACCESSORIES - DPK-NF 60 T>0 °C (COLDROOM)

## Characteristic:

- **Door leaf thickness** 60mm, produced on the press, by high pressure injection of PUR foam into door framework
- **Door finish** - stainless, acid-proof steel, type 1.4301, mat surface 2B or grinded surface 4N (option)
- **Door leaf core** - polyurethane foam, density of minimum 40kg/m<sup>3</sup>
- **Frame** - complex and profiled, made of stainless, acid-proof steel, type 1.4301, mat surface 2B or grinded surface 4N (option)
- **Accessories** - delivered by FERMOD, made of aluminium
- **Lower element** - channel section made of stainless, acid-proof steel sheet, type 1.4301

DPK-NF 60 SINGLE LEAF								
S \ H	1800	1900	2000	2100	2200	2300	2400	2500
800	1187	1201	1214	1228	1242	1255	1269	1282
900	1210	1225	1240	1254	1269	1283	1298	1313
1000	1233	1257	1281	1294	1306	1318	1331	1343
1100	1280	1297	1314	1330	1347	1364	1380	1397
1200	1327	1345	1363	1380	1398	1416	1433	1451
1300	1367	1385	1404	1423	1442	1460	1479	1498
1400	1406	1426	1446	1466	1485	1505	1525	1544
1500	1452	1472	1493	1514	1534	1555	1576	1597
1600	1497	1514	1532	1550	1567	1597	1627	1649
1700	1594	1617	1640	1662	1685	1708	1731	1754
1800	1692	1715	1739	1763	1787	1810	1834	1858
1900	1735	1760	1784	1809	1834	1859	1884	1908
2000	1778	1808	1838	1868	1899	1929	1959	2064

S \ H	2500	2600	2700	2800	3000
1500	1597	1608	1666	1724	1781
1600	1649	1688	1727	1767	1806
1700	1754	1805	1856	1881	<b>2238</b>
1800	1858	1882	1906	<b>2259</b>	<b>2279</b>
1900	1908	<b>2300</b>	<b>2340</b>	<b>2368</b>	<b>2359</b>
2000	2064	<b>2386</b>	<b>2436</b>	<b>2478</b>	<b>2520</b>
2200	<b>2411</b>	<b>2434</b>	<b>2532</b>	<b>2558</b>	<b>2680</b>
2400	<b>2581</b>	<b>2669</b>	<b>2757</b>	<b>2768</b>	<b>2779</b>

Prices in bold refer to doors with heavy system

## Options:

- door leaf thickness 80 mm - surcharge of 20 EUR/m<sup>2</sup>
- window, size 400 mm x 600 mm - surcharge of 100 EUR
- lock with patent insert with possibility of opening from the inside - surcharge of 175 EUR
- grained door surface - surcharge of 10%
- handle support (lever) for light-weight door - surcharge of 150 EUR (in heavy-weight door this option is included free of charge)

# PREMIUM SLIDING DOOR - STAINLESS - FERMOD ACCESSORIES - DPK-NF 100 T>-25 °C (FREEZER)

## Characteristic:

- **Door leaf thickness** 100mm, produced on the press, by high pressure injection of PUR foam into door framework
- **Door finish** - stainless, acid-proof steel, type 1.4301, mat surface 2B or grinded surface 4N (option)
- **Door leaf core** - polyurethane foam, density of minimum 40kg/m<sup>3</sup>
- **Heated frame** - complex and profiled, made of stainless, acid-proof steel, type 1.4301, mat surface 2B or grinded surface 4N (option)
- **Accessories** - delivered by FERMOD, made of aluminium
- **Lower element** - channel section made of stainless, acid-proof steel sheet, type 1.4301

DPK-NF 100 SINGLE LEAF								
S \ H	1800	1900	2000	2100	2200	2300	2400	2500
800	1392	1410	1428	1446	1464	1482	1500	1518
900	1435	1455	1474	1493	1512	1531	1550	1569
1000	1478	1499	1519	1539	1560	1580	1600	1621
1100	1508	1530	1551	1573	1594	1615	1637	1658
1200	1538	1560	1583	1606	1628	1651	1674	1696
1300	1611	1636	1661	1685	1710	1735	1760	1784
1400	1684	1711	1738	1765	1792	1819	1846	1872
1500	1705	1731	1758	1784	1810	1836	1862	1888
1600	1727	1754	1782	1809	1836	1863	1891	1918
1700	1810	1838	1867	1895	1924	1952	1981	2009
1800	1893	1923	1952	1982	2011	2041	2071	2100
1900	1943	1973	2004	2035	2066	2097	2127	2158
2000	1992	2030	2067	2104	2141	2179	2216	2321

S \ H	2500	2600	2700	2800	3000
1500	1888	1906	1964	2020	2077
1600	1918	1980	2029	2042	2055
1700	2009	2053	2094	2127	<b>2743</b>
1800	2100	2127	2160	<b>2717</b>	<b>2753</b>
1900	2158	<b>2647</b>	<b>2690</b>	<b>2732</b>	<b>2775</b>
2000	2321	<b>2765</b>	<b>2810</b>	<b>2856</b>	<b>2901</b>
2200	<b>2834</b>	<b>2882</b>	<b>2931</b>	<b>2979</b>	<b>3028</b>
2400	<b>2948</b>	<b>3000</b>	<b>3051</b>	<b>3103</b>	<b>3154</b>

Prices in bold refer to doors with heavy system

## Options:

- door leaf thickness 120 mm - surcharge of 20 EUR/m<sup>2</sup>
- window, size 400 mm x 600 mm - surcharge of 100 EUR
- lock with patent insert with possibility of opening from the inside - surcharge of 175 EUR
- grained door surface - surcharge of 10%
- handle support (lever) for light-weight door - surcharge of 150 EUR (in heavy-weight door this option is included free of charge)



## GAS-TIGHT SLIDING DOORS, “DPG” TYPE

### APPLICATION

DPG doors are applied in rooms with controlled atmosphere (KA), which is the best technology to store fruits and vegetables. In standard coldrooms fruits are stored in normal atmosphere containing 21% of oxygen and 0% carbon dioxide. In controlled atmosphere the content of oxygen is below 3% and the content of carbon dioxide is below 5%. This leads to prolongation of fruits and vegetables store period without losing their quality.

DPG - lightweight, up to 120 kg

DPG - heavyweight, up to 200 kg

### DOOR LEAF

DP doors are available in 2 versions: In DPSG (STANDARD) version door leaf is made of sandwich panel with PUR core and framed by steel channel section. In DPKG (PREMIUM) version door leaf is produced on the press, by high pressure injection of PUR foam into door framework. The density of PUR core is not less than  $40\text{kg/m}^3$ .

#### Available thicknesses:

- 80mm

#### STANDARD door leaf finish (sandwich panel):

- Galvanized steel sheet (L) thickness 0,5mm, coated with polyester paint in white colour RAL 9010

#### PREMIUM door leaf finish:

- Stainless, acid-proof steel (N), type 1.4301, thickness 0,8mm, mat surface 2B
- Galvanized steel sheet (L) thickness 0,75mm, coated with polyester paint in white colour RAL 9010

Door leaf is equipped with gasket delivered by FERMOD (F), eccentric ball valves one for gas filling of the room, the other in order to take samples from the room atmosphere clamps to ensure door leaf tightness, revision window 528x828mm, closed with a key.

### FRAME TYPE

In both DPSG and DPKG version door frame is filled with PUR foam. It is made of stainless, acid-proof steel (N), type 1.4301, thickness 0,8mm, mat surface 2B or galvanized steel sheet (T) thickness 0,75mm, coated with polyester paint in white colour (RAL 9010).

## LOCK

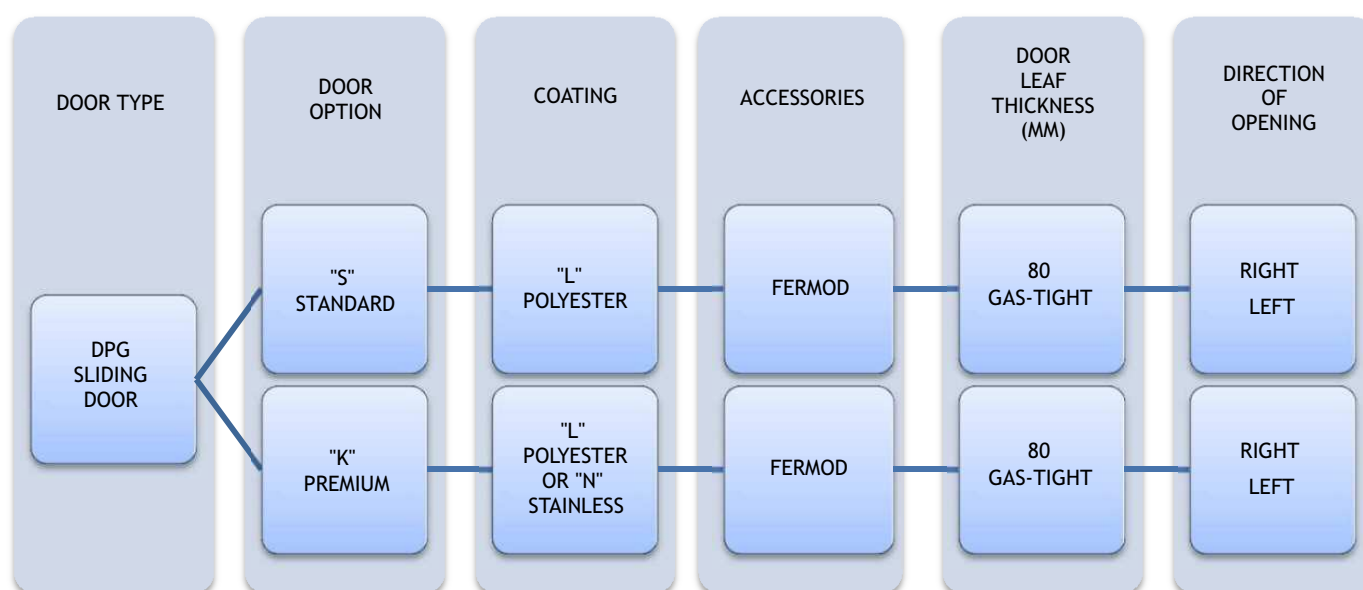
Lock is delivered by RAHRBACH. It is equipped with patent insert with possibility of emergency opening from the inside even if the door is locked.

## SUSPENSION SYSTEM

- FERMOD suspension system (F), aluminium rail - lightweight type
- FERMOD suspension system (F), galvanized steel or stainless steel rail - heavyweight type

## OPTIONS

- Untypical door leaf finish:
  - Stainless, acid-proof steel (N), type 1.4301, thickness 0,8mm, grinded surface 4B or grained surface
  - Galvanized steel sheet (L) coated with polyester paint other than white (RAL 9010)
- Availability to produce door with and without a threshold (lower element is installed in the floor)
- Flashing of the door opening



Enquiry/order example:



**DPKG-NF 80** - Premium gas-tight coldroom sliding door, stainless steel finish, FERMOD accessories, door leaf thickness 80mm, direction of opening to the right.

# STANDARD SLIDING DOOR - POLYESTER - FERMOD ACCESSORIES - DPSG-LF 80 T>0 °C (GAS-TIGHT)

## Characteristic:

- Door leaf made of sandwich panel with PUR core 80mm
- Door finish - galvanized steel sheet coated with polyester paint in white colour RAL 9010
- Door leaf framing - steel channel section, made of stainless, acid-proof steel sheet, type 1.4301
- Frame - complex and profiled, made of steel sheet coated with polyester paint in RAL 9010
- Accessories - delivered by FERMOD, made of aluminium
- Lower element - channel section made of stainless, acid-proof steel sheet, type 1.4301
- Eccentric ball valves - one for gas filling of the room, the other in order to take samples from the room atmosphere
- clamps - ensure door leaf tightness
- revision window - dimension of 528x828mm

DPSG-LF 80 SINGLE LEAF								
S \ H	1800	1900	2000	2100	2200	2300	2400	2500
800	1618	1625	1631	1637	1644	1650	1657	1664
900	1630	1638	1645	1652	1659	1666	1673	1680
1000	1643	1651	1659	1666	1674	1682	1689	1697
1100	1736	1744	1752	1760	1769	1777	1785	1794
1200	1748	1757	1766	1775	1784	1793	1801	1810
1300	1774	1783	1793	1802	1812	1821	1831	1840
1400	1799	1809	1819	1829	1840	1850	1860	1870
1500	1826	1836	1847	1858	1868	1879	1890	1901
1600	1852	1864	1875	1886	1897	1909	1920	1931
1700	1969	1981	1993	2005	2017	2029	2040	2053
1800	1982	1994	2007	2019	2032	2044	2057	2069
1900	2014	2027	2040	2053	2063	2073	2083	2093
2000	2046	2059	2073	2087	2100	2114	2128	2142

S \ H	2500	2600	2700	2800	3000	3200	3400	3600	3800	4000
1500	1901	1925	1940	1954	1968	1990	2012	2034	2057	2078
1600	1931	1995	2010	2025	2040	2063	2086	2109	2132	2155
1700	2053	2064	2080	2096	2112	2136	2160	2184	2207	2231
1800	2069	2082	2099	2115	2132	2157	2182	2207	2232	2257
1900	2093	2099	2116	2134	2152	2178	2204	2230	2256	2283
2000	2142	2155	2174	2193	2211	2239	2266	2294	2321	2349
2200	2176	2195	2214	2232	2251	2281	2311	2340	2370	<b>2713</b>
2400	2250	2275	2301	2326	2351	2377	2402	2427	<b>2791</b>	<b>2826</b>
2600	2287	2309	2331	2352	2374	2432	2491	<b>2870</b>	<b>2904</b>	<b>2938</b>
2800	2408	2434	2460	2486	2512	2538	<b>2880</b>	<b>2924</b>	<b>2968</b>	<b>3012</b>
3000	2468	2493	2517	2542	2567	<b>2930</b>	<b>2969</b>	<b>3008</b>	<b>3046</b>	<b>3085</b>

Prices in bold refer to doors with heavy system

## Options:

- lock with patent insert with possibility of opening from the inside - surcharge of 175 EUR
- handle support (lever) for light-weight door - surcharge of 150 EUR (in heavy-weight door this option is included free of charge)

# PREMIUM SLIDING DOOR - POLYESTER - FERMOD ACCESSORIES - DPKG-LF 80 T>0 °C (GAS-TIGHT)

## Characteristic:

- **Door leaf thickness** 80mm, produced on the press, by high pressure injection of PUR foam into door framework
- **Door finish** - galvanized steel sheet coated with polyester paint in white colour RAL 9010
- **Door leaf core** - polyurethane foam, density of minimum 40kg/m<sup>3</sup>
- **Frame** - complex and profiled, made of steel sheet coated with polyester paint in RAL 9010
- **Accessories** - delivered by FERMOD, made of aluminium
- **Lower element** - channel section made of stainless, acid-proof steel sheet, type 1.4301
- **Eccentric ball valves** - one for gas filling of the room, the other in order to take samples from the room atmosphere
- **clamps** - ensure door leaf tightness
- **revision window** - dimension of 528x828mm

DPKG-LF 80 SINGLE LEAF								
S \ H	1800	1900	2000	2100	2200	2300	2400	2500
800	1756	1763	1769	1776	1783	1789	1796	1803
900	1769	1776	1784	1791	1798	1805	1813	1820
1000	1782	1790	1798	1805	1813	1821	1829	1837
1100	1822	1831	1839	1848	1856	1865	1873	1882
1200	1862	1871	1881	1890	1899	1908	1918	1927
1300	1889	1899	1909	1918	1928	1938	1947	1957
1400	1917	1926	1935	1945	1954	1965	1976	1987
1500	1944	1955	1967	1979	1991	2002	2014	2026
1600	1970	1958	1993	2004	2015	2034	2054	2065
1700	2066	2079	2092	2105	2118	2130	2143	2156
1800	2162	2174	2186	2198	2211	2223	2235	2248
1900	2195	2208	2220	2233	2246	2259	2272	2285
2000	2228	2244	2259	2275	2291	2306	2322	2427

S \ H	2500	2600	2700	2800	3000
1500	2026	2038	2075	2113	2150
1600	2065	2100	2123	2146	2169
1700	2156	2236	2264	2312	<b>2706</b>
1800	2248	2303	2359	<b>2712</b>	<b>2721</b>
1900	2285	<b>2659</b>	<b>2703</b>	<b>2727</b>	<b>2750</b>
2000	2427	<b>2708</b>	<b>2747</b>	<b>2778</b>	<b>2809</b>
2200	<b>2722</b>	<b>2757</b>	<b>2791</b>	<b>2830</b>	<b>2868</b>
2400	<b>2850</b>	<b>2904</b>	<b>2958</b>	<b>2964</b>	<b>2970</b>

Prices in bold refer to doors with heavy system

## Options:

- lock with patent insert with possibility of opening from the inside - surcharge of 175 EUR
- door made in colour other than RAL 9010 - surcharge of 50 EUR/m<sup>2</sup>
- handle support (lever) for light-weight door - surcharge of 150 EUR (in heavy-weight door this option is included free of charge)



# PREMIUM SLIDING DOOR - STAINLESS - FERMOD ACCESSORIES - DPKG-NF 80 T>0 °C (GAS-TIGHT)

## Characteristic:

- **Door leaf thickness** 80mm, produced on the press, by high pressure injection of PUR foam into door framework
- **Door finish** -stainless, acid-proof steel, type 1.4301, mat surface 2B or grinded surface 4N (option)
- **Door leaf core** - polyurethane foam, density of minimum 40kg/m<sup>3</sup>
- **Heated frame** - complex and profiled, made of stainless, acid-proof steel, type 1.4301, mat surface 2B or grinded surface 4N (option)
- **Accessories** - delivered by FERMOD, made of aluminium
- **Lower element** - channel section made of stainless, acid-proof steel sheet, type 1.4301
- **Eccentric ball valves** - one for gas filling of the room, the other in order to take samples from the room atmosphere
- **clamps** - ensure door leaf tightness
- **revision window** - dimension of 528x828mm

DPKG-NF 80 SINGLE LEAF								
S \ H	1800	1900	2000	2100	2200	2300	2400	2500
800	1909	1923	1936	1950	1964	1977	1991	2004
900	1932	1947	1961	1976	1991	2005	2020	2035
1000	1955	1980	2004	2016	2028	2040	2052	2065
1100	2002	2019	2036	2052	2069	2086	2102	2119
1200	2049	2067	2085	2102	2120	2138	2155	2173
1300	2089	2107	2126	2145	2164	2182	2201	2219
1400	2128	2148	2168	2187	2207	2227	2246	2266
1500	2174	2194	2215	2236	2256	2277	2298	2318
1600	2219	2237	2254	2271	2289	2319	2349	2371
1700	2316	2339	2362	2385	2407	2430	2453	2475
1800	2413	2437	2461	2485	2509	2532	2556	2580
1900	2457	2481	2506	2531	2556	2581	2606	2630
2000	2500	2530	2560	2590	2621	2651	2681	2786

S \ H	2500	2600	2700	2800	3000
1500	2318	2354	2405	2455	2506
1600	2371	2410	2449	2489	2528
1700	2475	2527	2577	2603	<b>2960</b>
1800	2580	2604	2628	<b>2980</b>	<b>3000</b>
1900	2630	<b>3022</b>	<b>3062</b>	<b>3090</b>	<b>3081</b>
2000	2786	<b>3108</b>	<b>3158</b>	<b>3200</b>	<b>3242</b>
2200	<b>3133</b>	<b>3156</b>	<b>3254</b>	<b>3280</b>	<b>3402</b>
2400	<b>3303</b>	<b>3391</b>	<b>3478</b>	<b>3329</b>	<b>3501</b>

Prices in bold refer to doors with heavy system

## Options:

- lock with patent insert with possibility of opening from the inside - surcharge of 175 EUR
- grained door surface - surcharge of 10%
- handle support (lever) for light-weight door - surcharge of 150 EUR (in heavy-weight door this option is included free of charge)



## UNIVERSAL HINGED DOORS, “DRU” TYPE



### APPLICATION

DRU are multifunctional hinged doors which can be applied in different conditions and locations, such as industrial objects, production facilities store houses, etc. The structure of the door ensures its strength and durability. High insulation value has been achieved thanks to polyurethane foam core (PUR).

### DOOR LEAF

Door leaf is produced on the press, by high pressure injection of PUR foam into door framework. The density of PUR core is not less than  $40\text{kg/m}^3$ .

#### Available thickness

- 50mm - single or double-leaf

#### Door leaf finish

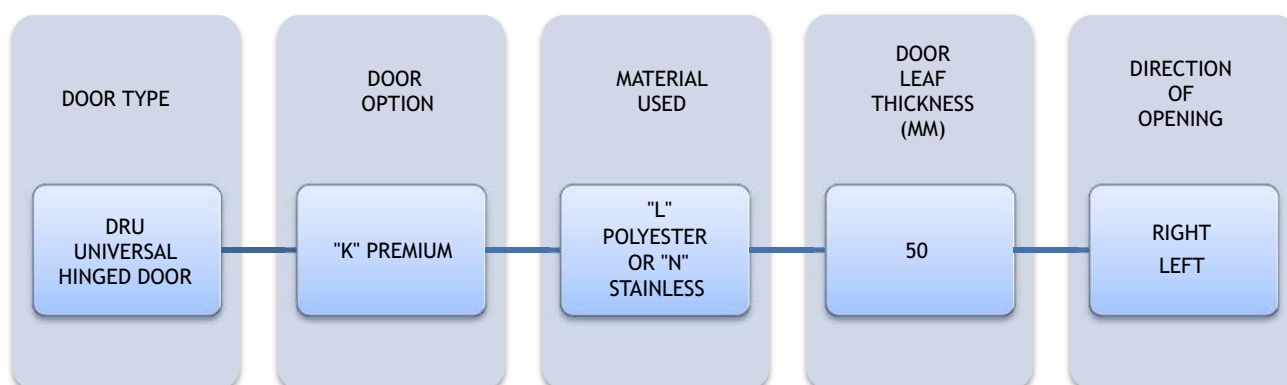
- stainless, stainless, acid-proof steel (N), type 1.4301, thickness 0,8mm, mat surface 2B
- galvanized steel sheet 0,75mm coated with polyester paint in white colour RAL 9010

### ACCESSORIES

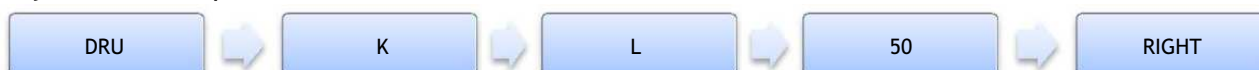
- lock with patent insert
- handle or knob made of stainless, acid-proof steel, type 1.4301
- hinges made of stainless, acid-proof steel, type 1.4301
- bolt in double-leaf door

## OPTIONS

- Untypical door leaf finish:
  - Stainless, acid-proof steel (N), type 1.4301, thickness 0,8mm, grinded surface 4B or grained surface
  - Galvanized steel sheet (T) thickness 0,75mm, coated with polyester paint other than white
  - Polyester laminate PECOLIT in RAL 9016 with stainless, acid-proof door leaf framing (N), type 1.4301
- Availability to produce door with and without a threshold (lower element is installed in the floor)
- Door pump
- Electric hook
- Door windows:
  - Round window ø280mm
  - Window in a different shape (special enquiry)
  - Execution of opening for a individual glazing
- Ventilation bar:
  - Dimension 455x135 mm
  - Other dimension and shape - individual enquiry
- Flashing of the door opening



Enquiry/order example:



**DRU-L** - Universal hinged door, polyester paint finish, door leaf thickness 50mm, direction of opening to the right.

# UNIVERSAL HINGED DOORS, STAINLESS

## DRU-N T>0 °C

### Characteristic:

- **Door leaf** thickness 50mm, produced on the press, by high pressure injection of PUR foam into door framework
- **Door finish** - stainless, acid-proof steel, type 1.4301, mat surface 2B or grinded surface 4N (option)
- **Door leaf core** - polyurethane foam, density of minimum 40kg/m<sup>3</sup>
- **Door closing** - lock with patent insert + stainless, acid-proof handle
- **Hinges** - stainless, acid-proof, type 1.4301
- **Frame** - complex and profiled, made of stainless, acid-proof steel, type 1.4301, mat surface 2B or grinded surface 4N (option)

DRU-N 50 SINGLE LEAF				
S \ H	2000	2100	2200	
800	504	517	531	
900	538	551	564	
1000	559	571	584	
1100	577	611	645	
1200	622	633	675	
1300	642	655	686	
1400	662	678	696	
1500	683	701	701	

DRU-N 50 DOUBLE LEAF								
S \ H	2000	2100	2200	2300	2400	2500	2600	
1200	857	887	917	935	954	973	991	
1300	880	910	941	960	980	1000	1019	
1400	902	933	965	985	1006	1026	1047	
1500	924	956	989	1010	1032	1053	1075	
1600	946	979	1013	1035	1058	1080	1103	
1700	968	1003	1037	1060	1084	1107	1131	
1800	990	1026	1061	1085	1110	1134	1158	
1900	1051	1080	1110	1136	1161	1186	1211	
2000	1111	1135	1159	1186	1212	1238	1264	
2100	1133	1161	1190	1217	1244	1271	1307	
2200	1156	1188	1220	1248	1276	1304	1350	
2300	1178	1214	1250	1279	1308	1337	1378	
2400	1201	1240	1280	1310	1340	1370	1406	
2500	1223	1267	1310	1341	1372	1403	1434	

Grained door surface - surcharge of 16%

### Options:

- grained door surface - surcharge of 16%

# UNIVERSAL HINGEND DOORS, POLYESTER DRU-L T>0 °C

## Characteristic:

- **Door leaf** thickness 50mm, produced on the press, by high pressure injection of PUR foam into door framework
- **Door finish** - galvanized steel sheet coated with polyester paint in white colour RAL 9010
- **Door leaf core** - polyurethane foam, density of minimum 40kg/m<sup>3</sup>
- **Door closing** - lock with patent insert + stainless, acid-proof handle
- **Hinges** - stainless, acid-proof, type 1.4301
- **Frame** - complex and profiled, made of stainless, acid-proof steel, type 1.4301, mat surface 2B or grinded surface 4N (option)

DRU-L 50 SINGLE LEAF				
S \ H	2000	2100	2200	
800	381	388	394	
900	387	398	410	
1000	393	409	426	
1100	412	438	464	
1200	442	449	474	
1300	453	460	484	
1400	464	472	494	
1500	475	483	498	

DRU-L 50 DOUBLE LEAF								
S \ H	2000	2100	2200	2300	2400	2500	2600	
1200	663	672	681	691	700	720	741	
1300	674	683	693	703	713	734	755	
1400	685	695	705	716	726	748	769	
1500	696	707	718	728	739	761	783	
1600	707	719	730	741	752	775	797	
1700	719	730	742	754	765	788	811	
1800	730	742	754	766	778	802	825	
1900	767	785	803	809	815	840	865	
2000	777	801	825	826	826	851	877	
2100	816	828	867	870	874	898	932	
2200	833	851	886	892	899	921	963	
2300	850	873	905	914	924	944	977	
2400	867	895	924	936	949	967	991	
2500	884	913	942	958	974	990	1006	

## Options:

- door made in colour other than RAL 9010 - surcharge of 50 EUR/m<sup>2</sup>

## SWING DOORS, “DW” TYPE



### APPLICATION

DW doors are great solution for industrial gateways with high number of passages (production facilities, supermarkets, restaurants, shops, etc.). The structure of the door ensures its strength and durability. High insulation value has been achieved thanks to polyurethane foam core (PUR).

### DOOR LEAF

Door leaf is produced on the press, by high pressure injection of PUR foam into door framework. The density of PUR core is not less than  $40\text{kg/m}^3$ .

#### DOOR LEAF FINISH

- Stainless, stainless, acid-proof steel (N), type 1.4301, thickness 0,8mm, mat surface 2B
- Galvanized steel sheet 0,75mm coated with polyester paint in white colour RAL 9010

Swing doors are equipped with round stainless, acid-proof window, diameter of  $\varnothing 280\text{mm}$  (standard).

Swing doors can be produced in single or double-leaf option.

### FRAME

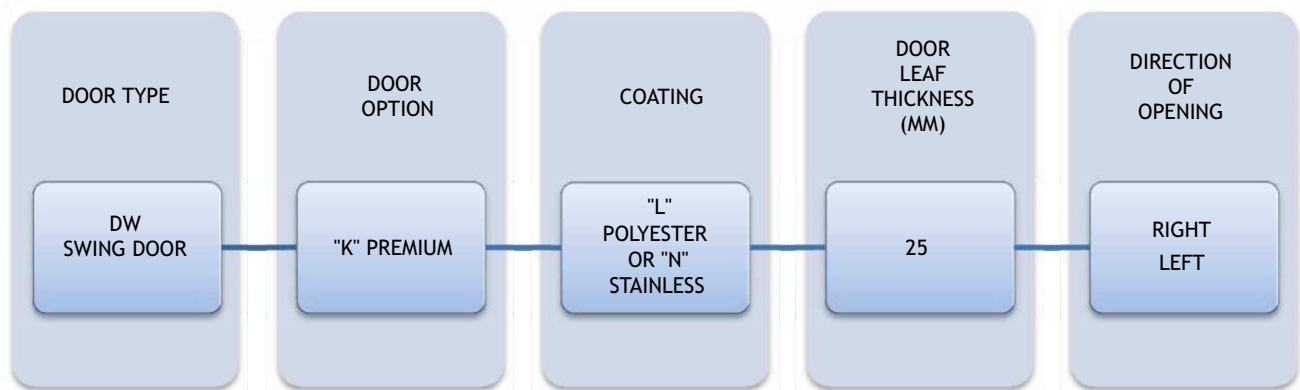
Swing doors DW installed to sandwich panel are equipped in frame in the shape of channel section, in case the DW doors are installed to brick wall are equipped in installation profile. Both channel section and installation profile are made of made of stainless, acid-proof steel, type 1.4301 or galvanized steel sheet coated with polyester paint in white colour RAL 9010.

### HINGES

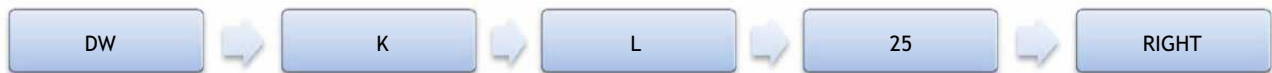
Hinges are delivered by FERMOD and are made of stainless, acid-proof steel or PVC with “STOP” function.

## OPTION

- Untypical door leaf finish:
  - Stainless, acid-proof steel (N), type 1.4301, thickness 0,8mm, grinded surface 4B or grained surface
  - Galvanized steel sheet (T) thickness 0,75mm, coated with polyester paint other than white
  - Polyester laminate PECOLIT in RAL 9016 with stainless, acid-proof door leaf framing (N), type 1.4301
- Door windows:
  - Window in a different shape (special enquiry)
  - Execution of opening for a individual glazing
- Flashing of the door opening
- Execution in composite material PE 500



Enquiry/order example:



**DW-L** - swing door, polyester paint finish, door leaf thickness 25mm, direction of opening to the right.

## SWING DOORS, POLYESTER DW-L T>0 °C

### Characteristic:

- **Door leaf** - thickness 25mm, produced on the press, by high pressure injection of PUR foam into door framework
- **Door finish** - galvanized steel sheet coated with polyester paint in white colour RAL 9010
- **Door leaf core** - polyurethane foam, density of minimum 40kg/m<sup>3</sup>
- **Hinges** - stainless, acid-proof, type 1.4301
- **Window** - round shape, stainless, acid-proof, type 1.4301
- **Buffers** preventing against damages

DW-L SINGLE LEAF						
S \ H	2000	2100	2200	2300	2400	2500
700	491	495	499	503	507	511
800	500	504	508	513	517	522
900	508	513	517	522	527	532
1000	516	522	527			
1100	525	530	536			
1200	533	539	545			
1300	542	548	554			

DW-L DOUBLE LEAF						
S \ H	2000	2100	2200	2300	2400	2500
1200	906	914	921	929	937	945
1300	921	930	938	946	954	963
1400	937	946	954	963	972	981
1500	952	962	971	980	989	998
1600	968	977	987	997	1007	1016
1700	983	993	1003	1014	1024	1034
1800	999	1009	1020	1031	1042	1052
1900	1014	1025	1036	1048	1059	1070
2000	1029	1041	1053			
2100	1045	1057	1069			
2200	1060	1073	1086			
2300	1076	1089	1102			
2400	1092	1105	1119			
2500	1107	1121	1135			
2600	1122	1137	1152			

### Options:

- door made in colour other than RAL 9010 - surcharge of 50 EUR/m<sup>2</sup>

## SWING DOORS, STAINLESS

### DW-N T>0 °C

#### Characteristic:

- **Door leaf** thickness 25mm, produced on the press, by high pressure injection of PUR foam into door framework
- **Door finish** - stainless, acid-proof steel, type 1.4301, mat surface 2B or grinded surface 4N (option)
- **Door leaf core** - polyurethane foam, density of minimum 40kg/m<sup>3</sup>
- **Hinges** - stainless, acid-proof, type 1.4301
- **Window** - round shape, stainless, acid-proof, type 1.4301
- **Buffers** preventing against damages

DW-N SINGLE LEAF						
S \ H	2000	2100	2200	2300	2400	2500
700	602	611	621	630	639	648
800	621	631	641	651	661	671
900	640	651	662	673	684	694
1000	659	671	682			
1100	678	690	703			
1200	697	710	723			
1300	715	730	744			

DW-N DOUBLE LEAF						
S \ H	2000	2100	2200	2300	2400	2500
1200	1079	1095	1110	1126	1141	1157
1300	1106	1122	1139	1155	1172	1188
1400	1132	1149	1167	1185	1202	1220
1500	1158	1177	1195	1214	1232	1251
1600	1185	1204	1223	1243	1262	1282
1700	1211	1231	1252	1272	1292	1313
1800	1237	1258	1280	1301	1323	1344
1900	1263	1286	1308	1331	1353	1375
2000	1290	1313	1336			
2100	1316	1340	1364			
2200	1342	1368	1393			
2300	1369	1395	1421			
2400	1395	1422	1449			
2500	1421	1449	1478			
2600	1447	1477	1506			

#### Options:

- grained door surface - surcharge of 16%

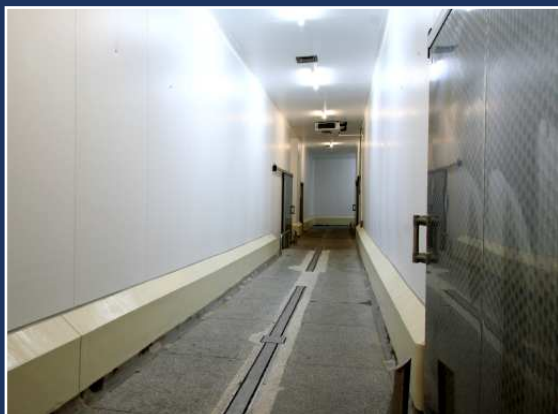
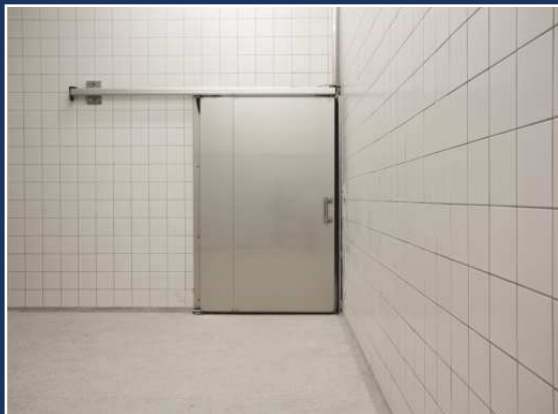








[www.paneltech.pl](http://www.paneltech.pl)



**PANELTECH**<sup>®</sup>  
MODERN BUILDING