

INDUSTRIAL DOORS

- COLDROOM AND FREEZER DOORS
- GAS-TIGHT SLIDING DOORS
- SWING DOORS
- UNIVERSAL HINGED DOORS



COLDROOM AND FREEZER HINGED DOOR “DR” TYPE



APPLICATION

DR type door are applied in coldrooms and freezers within the temperature range from -25°C to $+50^{\circ}\text{C}$. The structure of the door ensures its strength and durability. High insulation value has been achieved thanks to polyurethane foam core (PUR).

DOOR LEAF

DR doors are produced in 3 versions. In DRE (ECO) and DRS (STANDARD) version door leaf is made of sandwich panel with PUR core and framed by steel channel section. In DRK (PREMIUM) version door leaf is produced on the press, by high pressure injection of PUR foam into door framework. The density of PUR core is not less than $40\text{kg}/\text{m}^3$.

Available thicknesses:

- 60, 80mm - coldroom door (single and double leaf)
- 100mm, 120mm - freezer door (single leaf)

ECO and STANDARD door leaf finish (sandwich panel):

- Galvanized steel sheet (L) thickness 0,5mm, coated with polyester paint in white colour RAL 9010

PREMIUM door leaf finish:

- Stainless, acid-proof steel (N), type 1.4301, thickness 0,8mm, mat surface 2B
- Galvanized steel sheet (L) thickness 0,75mm, coated with polyester paint in white colour RAL 9010

FRAME TYPE

In DRE and DRS version door frame is filled with PUR foam. It is made of stainless, acid-proof steel (N), type 1.4301, thickness 0,8mm, mat surface 2B or galvanized steel sheet (L) thickness 0,75mm, coated with polyester paint in white colour (RAL 9010).

Freezer door frame and threshold are equipped in heating system (heating cable, 230V, 40W/rm)

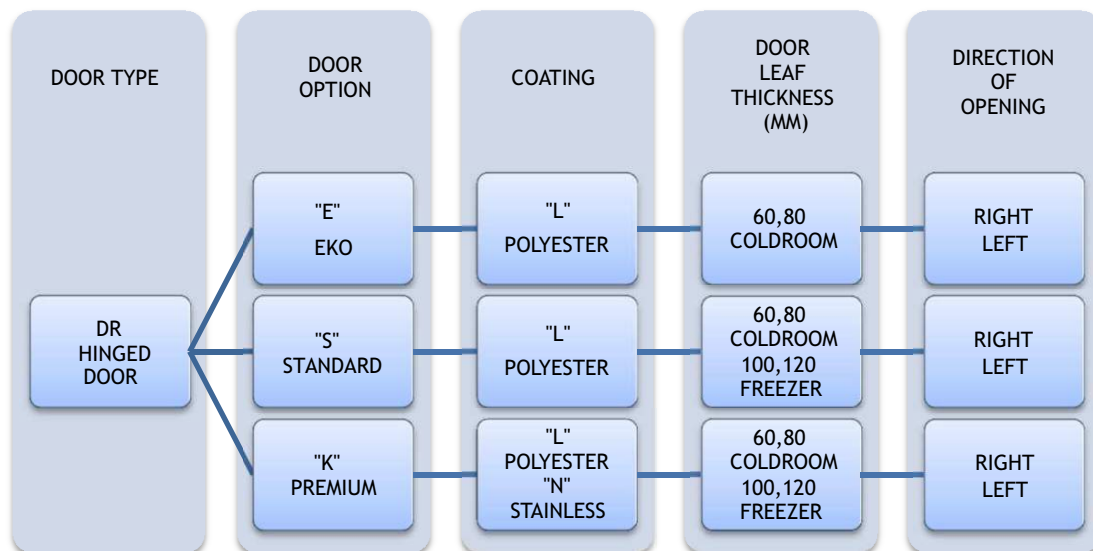
DRE version is equipped in angle bar shaped frame, which is made of galvanized steel sheet (L) thickness 0,75mm, coated with polyester paint in white colour (RAL 9010).

HINGES

Hinges are delivered by FERMOD. Thanks to door lifting option during opening and closing the hinges prevent the lower gasket from friction.

OPTIONS

- Untypical door leaf finish:
 - Stainless, acid-proof steel (N), type 1.4301, thickness 0,8mm, grinded surface 4B or grained surface
 - Galvanized steel sheet (L) thickness 0,75mm, coated with polyester paint other than white RAL 9010
 - Polyester laminate PECOLIT in RAL 9016 with stainless, acid-proof door leaf framing (N), type 1.4301
- Availability to produce door with and without a threshold (lower element is installed in the floor):
- Door windows
 - Round window $\varnothing 280\text{mm}$
 - Window in a different shape and dimension (special enquiry)
 - Execution of opening for a individual glazing
- Door adjusted to top railway system
- Flashing of the door opening



Enquiry/order example:



DRK-L 60 - coldroom hinged door, polyester paint finish, door leaf thickness 60mm, direction of opening to the right.

HINGED DOORS ECO DRE-L 60 T>0 °C (COLDROOM)

Characteristic:

- Door leaf made of sandwich panel with PUR core 60mm
- Door finish - galvanized steel sheet coated with polyester paint in white colour RAL 9010
- Door leaf framing - steel channel section, made of steel sheet coated with polyester paint in white colour RAL 9010
- Lock - delivered by FERMOD
- Hinges - delivered by FERMOD
- Frame - angle bar shaped, made of steel sheet coated with polyester paint in RAL 9010

| DRE-L 60 SINGLE LEAF | | | | | | | | |
|----------------------|------|------|------|------|------|------|------|------|
| S \ H | 1700 | 1800 | 1900 | 2000 | 2100 | 2200 | 2300 | 2400 |
| 700 | 338 | 343 | 348 | 353 | 359 | 364 | 369 | 375 |
| 800 | 340 | 345 | 350 | 356 | 361 | 366 | 372 | 377 |
| 900 | 342 | 347 | 353 | 358 | 363 | 369 | 374 | 379 |
| 1000 | 346 | 352 | 358 | 363 | 368 | 374 | 379 | 385 |
| 1100 | 351 | 357 | 362 | 368 | 374 | 379 | 385 | 390 |
| 1200 | 374 | 381 | 389 | 397 | 404 | 412 | 419 | 427 |
| 1300 | 409 | 419 | 428 | 438 | 447 | 456 | 466 | 476 |
| 1400 | 411 | 421 | 430 | 440 | 449 | 459 | 468 | 478 |
| 1500 | 414 | 423 | 433 | 442 | 451 | 461 | 470 | 480 |

| DRE-L 60 DOUBLE LEAF | | | | | | |
|----------------------|------|------|------|------|------|------|
| S \ H | 2000 | 2100 | 2200 | 2300 | 2400 | 2500 |
| 1400 | 593 | 602 | 612 | 621 | 631 | 641 |
| 1600 | 597 | 606 | 616 | 626 | 635 | 645 |
| 1800 | 601 | 610 | 620 | 630 | 639 | 649 |
| 2000 | 610 | 620 | 630 | 639 | 649 | 659 |
| 2200 | 619 | 629 | 639 | 649 | 659 | 669 |
| 2400 | 692 | 706 | 719 | 733 | 747 | 760 |
| 2600 | 766 | 783 | 800 | 817 | 834 | 851 |

STANDARD HINGED DOOR - POLYESTER DRS-L 60 T>0 ° C (COLDROOM)

Characteristic:

- **Door leaf** made of sandwich panel with PUR core 60mm
- **Door finish** - galvanized steel sheet coated with polyester paint in white colour RAL 9010
- **Door leaf framing** - steel channel section, made of steel sheet coated with polyester paint in white colour RAL 9010
- **Lock** - delivered by FERMOD
- **Hinges** - delivered by FERMOD
- **Frame** - complex and profiled, made of steel sheet coated with polyester paint in RAL 9010
- **Lower element** - channel section made of stainless, acid-proof steel sheet, type 1.4301

| DRS-L 60 SINGLE LEAF | | | | | | | | | |
|-----------------------------|-------------|-------------|-------------|-------------|-------------|-------------|-------------|-------------|-------------|
| S \ H | 1700 | 1800 | 1900 | 2000 | 2100 | 2200 | 2300 | 2400 | 2500 |
| 700 | 430 | 436 | 442 | 448 | 454 | 479 | 504 | 528 | 553 |
| 800 | 442 | 448 | 455 | 461 | 468 | 495 | 521 | 547 | 573 |
| 900 | 454 | 461 | 468 | 475 | 482 | 510 | 538 | 566 | 594 |
| 1000 | 466 | 473 | 481 | 488 | 496 | 526 | 555 | 585 | 614 |
| 1100 | 477 | 486 | 494 | 502 | 510 | 541 | 572 | 604 | 635 |
| 1200 | 488 | 497 | 505 | 514 | 523 | 557 | 591 | 625 | 659 |
| 1300 | 500 | 509 | 519 | 528 | 537 | 573 | 609 | 644 | 680 |
| 1400 | 512 | 522 | 532 | 542 | 552 | 589 | 626 | 664 | 701 |
| 1500 | 525 | 535 | 545 | 556 | 566 | 605 | 644 | 683 | 723 |

| DRS-L 80 DOUBLE LEAF | | | | | | |
|-----------------------------|-------------|-------------|-------------|-------------|-------------|-------------|
| S \ H | 2000 | 2100 | 2200 | 2300 | 2400 | 2500 |
| 1400 | 817 | 828 | 839 | 850 | 862 | 872 |
| 1600 | 845 | 857 | 869 | 881 | 893 | 906 |
| 1800 | 873 | 886 | 900 | 913 | 926 | 939 |
| 2000 | 902 | 916 | 930 | 944 | 958 | 972 |
| 2200 | 930 | 945 | 960 | 975 | 990 | 1005 |
| 2400 | 958 | 974 | 990 | 1006 | 1022 | 1038 |
| 2600 | 986 | 1004 | 1020 | 1037 | 1054 | 1071 |

Options:

- door leaf made of PUR sandwich panel thickness 80 mm - surcharge of 10 EUR/m²
- window, size 400 mm x 600 mm - surcharge of 100 EUR

PREMIUM HINGED DOORS - POLYESTER DRK-L 60 T>0 ° C (COLDROOM)

Characteristic:

- Door leaf thickness 60mm, produced on the press, by high pressure injection of PUR foam into door framework
- Door finish - galvanized steel sheet coated with polyester paint in white colour RAL 9010
- Door leaf core - polyurethane foam, density of minimum 40kg/m³
- Lock - delivered by FERMOD
- Hinges - delivered by FERMOD
- Frame - complex and profiled, made of steel sheet coated with polyester paint in RAL 9010
- Lower element - channel section made of stainless, acid-proof steel sheet, type 1.4301

| DRK-L 60 SINGLE LEAF | | | | | | | | | |
|----------------------|------|------|------|------|------|------|------|------|------|
| s \ H | 1700 | 1800 | 1900 | 2000 | 2100 | 2200 | 2300 | 2400 | 2500 |
| 700 | 476 | 487 | 498 | 509 | 520 | 531 | 542 | 553 | 563 |
| 800 | 489 | 497 | 504 | 512 | 525 | 539 | 553 | 567 | 580 |
| 900 | 502 | 510 | 518 | 526 | 540 | 555 | 569 | 583 | 598 |
| 1000 | 537 | 540 | 545 | 549 | 592 | 599 | 606 | 613 | 620 |
| 1100 | 582 | 591 | 600 | 609 | 619 | 628 | 637 | 646 | 655 |
| 1200 | 585 | 595 | 604 | 613 | 622 | 640 | 647 | 655 | 663 |
| 1300 | 605 | 616 | 627 | 638 | 649 | 660 | 669 | 678 | 687 |
| 1400 | 618 | 629 | 639 | 650 | 661 | 672 | 679 | | |
| 1500 | 631 | 642 | 654 | 665 | 676 | 687 | | | |

| DRK-L 80 DOUBLE LEAF | | | | | | |
|----------------------|------|------|------|------|------|------|
| s \ H | 2000 | 2100 | 2200 | 2300 | 2400 | 2500 |
| 1400 | 915 | 927 | 938 | 948 | 960 | 971 |
| 1500 | 925 | 940 | 955 | 970 | 985 | 1000 |
| 1600 | 934 | 953 | 973 | 992 | 1011 | 1030 |
| 1700 | 953 | 971 | 993 | 1015 | 1037 | 1060 |
| 1800 | 972 | 989 | 1014 | 1039 | 1064 | 1089 |
| 1900 | 990 | 1007 | 1035 | 1063 | 1091 | 1119 |
| 2000 | 1009 | 1025 | 1056 | 1087 | 1118 | 1149 |
| 2100 | 1015 | 1043 | 1072 | 1101 | 1131 | 1178 |
| 2200 | 1021 | 1060 | 1088 | 1116 | 1144 | |
| 2300 | 1024 | 1078 | 1126 | 1131 | 1158 | |
| 2400 | 1027 | 1095 | 1163 | | | |
| 2500 | 1030 | 1112 | 1201 | | | |

Options:

- door leaf made of PUR sandwich panel thickness 80 mm - surcharge of 20 EUR/m²
- window, size 400 mm x 600 mm - surcharge of 100 EUR
- door made in colour other than RAL 9010 - surcharge of 50 EUR/m²

PREMIUM HINGED DOORS - STAINLESS DRK-N 60 T>0 °C (COLDROOM)

Characteristic:

- Door leaf thickness 60 mm, produced on the press, by high pressure injection of PUR foam into door framework
- Door finish - stainless, acid-proof steel, type 1.4301, mat surface 2B or grinded surface 4N (option)
- Door leaf core - polyurethane foam, density of minimum 40kg/m³
- Lock - delivered by FERMOD
- Hinges - delivered by FERMOD
- Frame - complex and profiled, made of stainless, acid-proof mat surface 2B or grinded surface 4N (option)
- Lower element - channel section made of stainless, acid-proof steel sheet, type 1.4301

| DRK-N 60 SINGLE LEAF | | | | | | | | | |
|-----------------------------|-------------|-------------|-------------|-------------|-------------|-------------|-------------|-------------|-------------|
| S \ H | 1700 | 1800 | 1900 | 2000 | 2100 | 2200 | 2300 | 2400 | 2500 |
| 700 | 640 | 642 | 658 | 675 | 691 | 708 | 724 | 741 | 755 |
| 800 | 663 | 679 | 696 | 712 | 727 | 743 | 758 | 773 | 788 |
| 900 | 686 | 703 | 720 | 737 | 754 | 771 | 788 | 804 | 821 |
| 1000 | 717 | 738 | 757 | 778 | 795 | 812 | 828 | 844 | 861 |
| 1100 | 763 | 782 | 801 | 821 | 840 | 860 | 879 | 898 | 918 |
| 1200 | 786 | 811 | 835 | 860 | 884 | 904 | 922 | 939 | 957 |
| 1300 | 827 | 851 | 875 | 899 | 924 | 948 | 969 | 991 | 1012 |
| 1400 | 858 | 882 | 906 | 930 | 954 | 978 | 995 | | |
| 1500 | 890 | 913 | 937 | 961 | 985 | 1008 | | | |

| DRK-N 80 DOUBLE LEAF | | | | | | |
|-----------------------------|-------------|-------------|-------------|-------------|-------------|-------------|
| S \ H | 2000 | 2100 | 2200 | 2300 | 2400 | 2500 |
| 1400 | 1202 | 1239 | 1276 | 1313 | 1349 | 1386 |
| 1500 | 1222 | 1259 | 1295 | 1332 | 1369 | 1405 |
| 1600 | 1242 | 1278 | 1315 | 1351 | 1388 | 1424 |
| 1700 | 1281 | 1312 | 1350 | 1387 | 1425 | 1462 |
| 1800 | 1320 | 1346 | 1384 | 1423 | 1462 | 1500 |
| 1900 | 1359 | 1380 | 1420 | 1459 | 1499 | 1538 |
| 2000 | 1398 | 1414 | 1454 | 1495 | 1536 | 1577 |
| 2100 | 1438 | 1448 | 1473 | 1514 | 1554 | 1615 |
| 2200 | 1477 | 1482 | 1492 | 1532 | 1573 | |
| 2300 | 1496 | 1519 | 1544 | 1551 | 1591 | |
| 2400 | 1516 | 1557 | 1597 | | | |
| 2500 | 1536 | 1594 | 1651 | | | |

Options:

- door leaf thickness 80 mm - surcharge of 20 EUR/m²
- window, size 400 mm x 600 mm - surcharge of 100 EUR
- grained door surface - surcharge of 16%

STANDARD HINGED DOOR - POLYESTER DRS-L 100 T>-25 °C (FREEZER)

Characteristic:

- **Door leaf** made of sandwich panel with PUR core 100mm
- **Door finish** - galvanized steel sheet coated with polyester paint in white colour RAL 9010
- **Door leaf framing** - steel channel section, made of steel sheet coated with polyester paint in white colour RAL 9010
- **Lock** - delivered by FERMOD
- **Hinges** - delivered by FERMOD
- **Frame** - complex and profiled, made of steel sheet coated with polyester paint in RAL 9010
- **Lower element** - channel section made of stainless, acid-proof steel sheet, type 1.4301

| DRS-L 100 SINGLE LEAF | | | | | | | | | |
|------------------------------|-------------|-------------|-------------|-------------|-------------|-------------|-------------|-------------|-------------|
| s \ H | 1700 | 1800 | 1900 | 2000 | 2100 | 2200 | 2300 | 2400 | 2500 |
| 700 | 567 | 575 | 583 | 591 | 599 | 620 | 641 | 662 | 682 |
| 800 | 583 | 594 | 605 | 616 | 628 | 644 | 660 | 677 | 693 |
| 900 | 599 | 614 | 628 | 642 | 656 | 668 | 680 | 692 | 704 |
| 1000 | 616 | 628 | 640 | 652 | 664 | 681 | 697 | 713 | 729 |
| 1100 | 636 | 646 | 657 | 667 | 677 | 698 | 719 | 740 | 761 |
| 1200 | 642 | 656 | 669 | 683 | 696 | 714 | 732 | 750 | 768 |
| 1300 | 649 | 666 | 682 | 698 | 715 | 735 | 754 | 775 | / |
| 1400 | 676 | 693 | 711 | 728 | 745 | 760 | 775 | / | / |
| 1500 | 703 | 722 | 740 | 757 | 775 | 783 | / | / | / |

Options:

- door leaf made of PUR sandwich panel thickness 120 mm - surcharge of 10 EUR/m²
- window, size 400 mm x 600 mm - surcharge of 100 EUR

PREMIUM HINGED DOORS - POLYESTER DRK-L 100 T>-25 °C (FREEZER)

Characteristic:

- **Door leaf** thickness 100mm, produced on the press, by high pressure injection of PUR foam into door framework
- **Door finish** - galvanized steel sheet coated with polyester paint in white colour RAL 9010
- **Door leaf core** - polyurethane foam, density of minimum 40kg/m³
- **Lock** - delivered by FERMOD
- **Hinges** - delivered by FERMOD
- **Frame** - complex and profiled, made of steel sheet coated with polyester paint in RAL 9010
- **Lower element** - channel section made of stainless, acid-proof steel sheet, type 1.4301

| DRK-L 100 SINGLE LEAF | | | | | | | | | |
|-----------------------|------|------|------|------|------|------|------|------|------|
| s \ H | 1700 | 1800 | 1900 | 2000 | 2100 | 2200 | 2300 | 2400 | 2500 |
| 700 | 622 | 633 | 644 | 654 | 665 | 676 | 687 | 698 | 708 |
| 800 | 642 | 653 | 665 | 676 | 688 | 700 | 711 | 723 | 734 |
| 900 | 661 | 674 | 686 | 699 | 711 | 723 | 736 | 748 | 761 |
| 1000 | 693 | 709 | 726 | 742 | 778 | 794 | 800 | 801 | 801 |
| 1100 | 724 | 738 | 751 | 765 | 799 | 800 | 810 | 826 | 842 |
| 1200 | 755 | 772 | 789 | 806 | 823 | 838 | 853 | 868 | 883 |
| 1300 | 778 | 795 | 811 | 828 | 845 | 862 | 873 | 884 | / |
| 1400 | 800 | 817 | 834 | 852 | 869 | 886 | 896 | / | / |
| 1500 | 823 | 840 | 857 | 875 | 892 | 909 | / | / | / |

Options:

- door leaf made of PUR sandwich panel thickness 120 mm - surcharge of 20 EUR/m²
- window, size 400 mm x 600 mm - surcharge of 100 EUR
- door made in colour other than RAL 9010 - surcharge of 50 EUR/m²

PREMIUM HINGED DOORS - STAINLESS DRK-N 100 T>-25 °C (FREEZER)

Characteristic:

- **Door leaf** thickness 100mm, produced on the press, by high pressure injection of PUR foam into door framework
- **Door finish** - stainless, acid-proof steel, type 1.4301, mat surface 2B or grinded surface 4N (option)
- **Door leaf core** - polyurethane foam, density of minimum 40kg/m³
- **Lock** - delivered by FERMOD
- **Hinges** - delivered by FERMOD
- **Frame** - complex and profiled, made of stainless, acid-proof mat surface 2B or grinded surface 4N (option)
- **Lower element** - channel section made of stainless, acid-proof steel sheet, type 1.4301

| DRK-N 100 SINGLE LEAF | | | | | | | | | |
|------------------------------|-------------|-------------|-------------|-------------|-------------|-------------|-------------|-------------|-------------|
| s \ H | 1700 | 1800 | 1900 | 2000 | 2100 | 2200 | 2300 | 2400 | 2500 |
| 700 | 839 | 860 | 881 | 903 | 924 | 945 | 966 | 988 | 1009 |
| 800 | 871 | 893 | 915 | 937 | 960 | 984 | 1007 | 1030 | 1054 |
| 900 | 903 | 927 | 951 | 974 | 999 | 1024 | 1049 | 1074 | 1098 |
| 1000 | 953 | 980 | 1008 | 1035 | 1059 | 1088 | 1118 | 1146 | 1175 |
| 1100 | 971 | 994 | 1017 | 1041 | 1064 | 1101 | 1139 | 1176 | 1214 |
| 1200 | 1018 | 1045 | 1071 | 1098 | 1124 | 1150 | 1196 | 1243 | 1289 |
| 1300 | 1050 | 1078 | 1106 | 1134 | 1162 | 1190 | 1214 | 1244 | 1274 |
| 1400 | 1083 | 1112 | 1141 | 1170 | 1199 | 1229 | 1278 | 1308 | 1338 |
| 1500 | 1115 | 1145 | 1176 | 1207 | 1237 | 1268 | 1300 | 1332 | 1364 |

Options:

- door leaf made of PUR sandwich panel thickness 120 mm - surcharge of 20 EUR/m²
- window, size 400 mm x 600 mm - surcharge of 100 EUR
- grained door surface - surcharge of 16%

PREMIUM HINGED FLUSH DOORS - POLYESTER DRKZ-L 80 T>0°C (COLDROOM)

Characteristic:

- Door leaf - thickness 80mm, Made of envelope bent steel;
- Door finish - steel channel section, made of steel sheet coated with polyester paint in white colour RAL 9010
- Door leaf core - polyurethane foam, density of minimum min. 40 kg/m³
- Lock - delivered by FERMOD
- Hinges - delivered by RAHRBACH
- The frame flush with the external wall surface - complex and profiled, made of steel sheet coated with polyester paint in RAL 9010
- Lower element- channel section made of stainless, acid-proof steel sheet, type 1.4301

| DRKZ-L 80 SINGLE LEAF | | | | | | | | | |
|------------------------------|-------------|-------------|-------------|-------------|-------------|-------------|-------------|-------------|-------------|
| S \ H | 1700 | 1800 | 1900 | 2000 | 2100 | 2200 | 2300 | 2400 | 2500 |
| 700 | 596 | 609 | 623 | 636 | 650 | 663 | 677 | 691 | 704 |
| 800 | 612 | 621 | 630 | 639 | 657 | 674 | 691 | 708 | 726 |
| 900 | 628 | 638 | 648 | 657 | 675 | 693 | 711 | 729 | 747 |
| 1000 | 671 | 676 | 681 | 686 | 740 | 749 | 757 | 767 | 775 |
| 1100 | 728 | 739 | 750 | 762 | 773 | 785 | 796 | 808 | 819 |
| 1200 | 732 | 743 | 755 | 766 | 778 | 800 | 809 | 819 | 828 |
| 1300 | 757 | 770 | 784 | 798 | 811 | 825 | 836 | | |

| DRKZ-L 80 DOUBLE LEAF | | | | | | |
|------------------------------|-------------|-------------|-------------|-------------|-------------|-------------|
| S \ H | 2000 | 2100 | 2200 | 2300 | 2400 | 2500 |
| 1400 | 1099 | 1112 | 1125 | 1138 | 1152 | 1165 |
| 1500 | 1110 | 1128 | 1146 | 1164 | 1182 | 1200 |
| 1600 | 1121 | 1144 | 1167 | 1190 | 1213 | 1236 |
| 1700 | 1144 | 1166 | 1192 | 1218 | 1245 | 1271 |
| 1800 | 1166 | 1187 | 1217 | 1247 | 1277 | 1307 |
| 1900 | 1189 | 1208 | 1242 | 1275 | 1309 | 1343 |
| 2000 | 1211 | 1230 | 1267 | 1304 | 1341 | 1378 |
| 2100 | 1218 | 1251 | 1286 | 1322 | 1357 | 1414 |
| 2200 | 1225 | 1272 | 1306 | 1339 | 1373 | |
| 2300 | 1228 | 1293 | 1351 | 1357 | 1389 | |
| 2400 | 1232 | 1314 | 1396 | | | |
| 2500 | 1235 | 1335 | 1441 | | | |

Options:

- window, size 400 mm x 600 mm - surcharge of 100 EUR
- door made in colour other than RAL 9010 - surcharge of 50 EUR/m²

PREMIUM HINGED FLUSH DOORS - STAINLESS DRKZ-N 80 T>0°C (COLDROOM)

Characteristic:

- Door leaf - thickness 80mm, Made of envelope bent steel;
- Door finish - stainless, acid-proof steel, type 1.4301, mat surface 2B or grinded surface 4N (option)
- Door leaf core - polyurethane foam, density of minimum min. 40 kg/m³
- Lock - delivered by FERMOD
- Hinges - delivered by RAHRBACH
- The frame flush with the external wall surface - complex and profiled, made of stainless, acid-proof mat surface 2B or grinded surface 4N (option)
- Lower element- channel section made of stainless, acid-proof steel sheet, type 1.4301

| DRKZ-N 80 SINGLE LEAF | | | | | | | | | |
|-----------------------|------|------|------|------|------|------|------|------|------|
| S \ H | 1700 | 1800 | 1900 | 2000 | 2100 | 2200 | 2300 | 2400 | 2500 |
| 700 | 800 | 802 | 823 | 843 | 864 | 885 | 906 | 926 | 944 |
| 800 | 829 | 849 | 870 | 890 | 909 | 928 | 947 | 966 | 985 |
| 900 | 858 | 879 | 900 | 921 | 942 | 964 | 985 | 1005 | 1027 |
| 1000 | 897 | 922 | 947 | 972 | 994 | 1015 | 1035 | 1055 | 1076 |
| 1100 | 923 | 946 | 970 | 993 | 1016 | 1040 | 1063 | 1087 | 1110 |
| 1200 | 951 | 981 | 1010 | 1040 | 1070 | 1094 | 1115 | 1136 | 1158 |
| 1300 | 1001 | 1030 | 1059 | 1088 | 1117 | 1147 | 1173 | | |

| DRKZ-N 80 DOUBLE LEAF | | | | | | |
|-----------------------|------|------|------|------|------|------|
| S \ H | 2000 | 2100 | 2200 | 2300 | 2400 | 2500 |
| 1400 | 1395 | 1438 | 1480 | 1523 | 1565 | 1608 |
| 1500 | 1418 | 1460 | 1503 | 1545 | 1588 | 1630 |
| 1600 | 1440 | 1483 | 1525 | 1567 | 1610 | 1652 |
| 1700 | 1486 | 1522 | 1566 | 1609 | 1653 | 1696 |
| 1800 | 1531 | 1562 | 1606 | 1651 | 1696 | 1740 |
| 1900 | 1536 | 1559 | 1604 | 1649 | 1694 | 1738 |
| 2000 | 1580 | 1598 | 1644 | 1689 | 1736 | 1782 |
| 2100 | 1624 | 1636 | 1665 | 1711 | 1756 | 1825 |
| 2200 | 1669 | 1674 | 1686 | 1731 | 1777 | |
| 2300 | 1691 | 1717 | 1745 | 1752 | 1798 | |
| 2400 | 1713 | 1759 | 1805 | | | |
| 2500 | 1735 | 1801 | 1865 | | | |

Options:

- window, size 400 mm x 600 mm - surcharge of 100 EUR
- grained door surface - surcharge of 16%

PREMIUM HINGED FLUSH DOORS - POLYESTER DRKZ-L 100 T>-25°C (FREEZER)

Characteristic:

- **Door leaf** - thickness 100mm, Made of envelope bent steel;
- **Door finish** - steel channel section, made of steel sheet coated with polyester paint in white colour RAL 9010
- **Door leaf core** - polyurethane foam, density of minimum min. 40 kg/m³
- **Lock** - delivered by FERMOD
- **Hinges** - delivered by RAHRBACH
- **the frame flush with the external wall surface** - complex and profiled, made of steel sheet coated with polyester paint in RAL 9010
- **Lower element**- channel section made of stainless, acid-proof steel sheet, type 1.4301

| DRKZ-L 100 SINGLE LEAF | | | | | | | | | |
|-------------------------------|-------------|-------------|-------------|-------------|-------------|-------------|-------------|-------------|-------------|
| S \ H | 1700 | 1800 | 1900 | 2000 | 2100 | 2200 | 2300 | 2400 | 2500 |
| 700 | 746 | 759 | 772 | 785 | 798 | 811 | 824 | 837 | 850 |
| 800 | 770 | 784 | 798 | 812 | 826 | 840 | 853 | 868 | 881 |
| 900 | 793 | 808 | 823 | 838 | 853 | 868 | 883 | 898 | 913 |
| 1000 | 831 | 851 | 871 | 891 | 934 | 953 | 960 | 961 | 961 |
| 1100 | 869 | 885 | 901 | 918 | 959 | 960 | 972 | 991 | 1011 |
| 1200 | 907 | 927 | 947 | 967 | 988 | 1006 | 1024 | 1042 | 1059 |
| 1300 | 934 | 954 | 974 | 994 | 1014 | 1034 | 1048 | | |

Options:

- window, size 400 mm x 600 mm - surcharge of 100 EUR
- door made in colour other than RAL 9010 - surcharge of 50 EUR/m²

PREMIUM HINGED FLUSH DOORS - STAINLESS DRKZ-N 100 T>-25°C (FREEZER)

Characteristic:

- Door leaf - thickness 100mm, Made of envelope bent steel;
- Door finish - stainless, acid-proof steel, type 1.4301, mat surface 2B or grinded surface 4N (option)
- Door leaf core - polyurethane foam, density of minimum min. 40 kg/m³
- Lock - delivered by FERMOD
- Hinges - delivered by RAHRBACH
- The frame flush with the external wall surface - made of stainless, acid-proof mat surface 2B or grinded surface 4N (option)
- Lower element - channel section made of stainless, acid-proof steel sheet, type 1.4301

| DRKZ-N 100 SINGLE LEAF | | | | | | | | | |
|------------------------|------|------|------|------|------|------|------|------|------|
| S \ H | 1700 | 1800 | 1900 | 2000 | 2100 | 2200 | 2300 | 2400 | 2500 |
| 700 | 982 | 1006 | 1031 | 1056 | 1081 | 1106 | 1131 | 1155 | 1180 |
| 800 | 1019 | 1045 | 1071 | 1096 | 1124 | 1151 | 1178 | 1205 | 1233 |
| 900 | 1057 | 1085 | 1112 | 1140 | 1169 | 1198 | 1227 | 1256 | 1285 |
| 1000 | 1115 | 1147 | 1179 | 1211 | 1239 | 1274 | 1308 | 1341 | 1375 |
| 1100 | 1136 | 1163 | 1190 | 1218 | 1245 | 1289 | 1332 | 1376 | 1420 |
| 1200 | 1192 | 1222 | 1253 | 1284 | 1315 | 1346 | 1400 | 1454 | 1508 |
| 1300 | 1229 | 1262 | 1294 | 1327 | 1359 | 1392 | 1421 | | |

Options:

- door leaf thickness 120 mm - surcharge of 20 EUR/m²
- window, size 400 mm x 600 mm - surcharge of 100 EUR
- grained door surface - surcharge of 16%



COLDROOM AND FREEZER SLIDING DOORS, “DP” TYPE

APPLICATION

DP doors are applied in coldrooms and freezers within the temperature from -25°C to $+50^{\circ}\text{C}$. The structure of the door ensures its strength and durability. High insulation value has been achieved thanks to polyurethane foam core (PUR).

DPG - lightweight, up to 120 kg
DPG - heavyweight, up to 200 kg

DOOR LEAF

DP doors are available in 2 versions: In DPS (STANDARD) version door leaf is made of sandwich panel with PUR core and framed by steel channel section. In DPK (PREMIUM) version door leaf is produced on the press, by high pressure injection of PUR foam into door framework. The density of PUR core is not less than $40\text{kg}/\text{m}^3$.

Available thicknesses:

- 60, 80mm - coldroom door
- 100, 120mm - freezer door

STANDARD door leaf finish (sandwich panel):

- Galvanized steel sheet (L) thickness 0,5mm, coated with polyester paint in white colour RAL 9010

PREMIUM door leaf finish:

- Stainless, acid-proof steel (N), type 1.4301, thickness 0,8mm, mat surface 2B
- Galvanized steel sheet (L) thickness 0,75mm, coated with polyester paint in white colour RAL 9010

Door leaf is equipped with gasket delivered by FERMOD (F).

FRAME TYPE

In both DPS and DPK version door frame is filled with PUR foam. It is made of stainless, acid-proof steel (N), type 1.4301, thickness 1,5mm, mat surface 2B or galvanized steel sheet (L) thickness 1,5mm, coated with polyester paint in white colour (RAL 9010).

Freezer door frame and threshold are equipped in heating system (heating cable, 230V, 40W/rm).

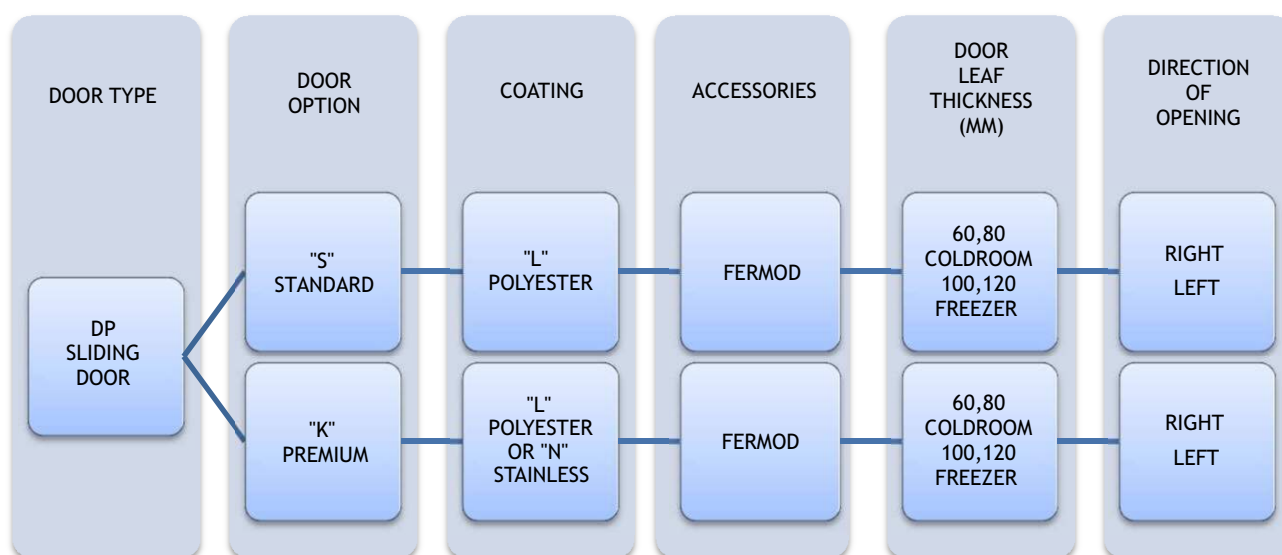
Lock is delivered by FERMOD (F). It is equipped with patent insert with possibility of emergency opening from the inside even if the door is locked.

SUSPENSION SYSTEM

- FERMOD suspension system (F), aluminium rail - lightweight type
- FERMOD suspension system (F), galvanized steel or stainless steel rail - heavyweight type

OPTIONS

- Untypical door leaf finish:
 - Stainless, acid-proof steel (N), type 1.4301, thickness 0,8mm, grinded surface 4B or grained surface
 - Galvanized steel sheet (T) thickness 0,75mm, coated with polyester paint other than white
 - Polyester laminate PECOLIT in RAL 9016 with stainless, acid-proof door leaf framing (N), type 1.4301
- Availability to produce door with and without a threshold (lower element is installed in the floor)
- Flashing of the door opening
- Application of automatic kits delivered by FERMOD (F)
- Door windows:
 - Round window ø280mm
 - Window in a different shape (special enquiry)
- Door adjusted to top railway system



Enquiry/order example:



DPK-NF 60 - Premium coldroom sliding door, stainless steel finish, FERMOD accessories, door leaf thickness 60mm, direction of opening to the right.

STANDARD SLIDING DOOR - POLYESTER - FERMOD ACCESSORIES - DPS-LF 60 T>0 °C (COLDROOM)

Characteristic:

- Door leaf made of sandwich panel with PUR core 60mm
- Door finish - galvanized steel sheet, coated with polyester paint in white colour RAL 9010
- Door leaf framing - steel channel section, made of stainless, acid-proof steel sheet, type 1.4301
- Frame - complex and profiled, made of steel sheet coated with polyester paint in RAL 9010
- Accessories - delivered by FERMOD, made of aluminium
- Lower element - channel section made of stainless, acid-proof steel sheet, type 1.4301

| DPS-LF 60 SINGLE LEAF | | | | | | | | |
|-----------------------|------|------|------|------|------|------|------|------|
| S \ H | 1800 | 1900 | 2000 | 2100 | 2200 | 2300 | 2400 | 2500 |
| 800 | 980 | 987 | 994 | 1001 | 1009 | 1016 | 1023 | 1030 |
| 900 | 993 | 1001 | 1010 | 1017 | 1025 | 1033 | 1041 | 1049 |
| 1000 | 1007 | 1016 | 1025 | 1033 | 1042 | 1050 | 1059 | 1067 |
| 1100 | 1110 | 1119 | 1129 | 1138 | 1147 | 1156 | 1165 | 1175 |
| 1200 | 1124 | 1134 | 1144 | 1154 | 1164 | 1173 | 1183 | 1193 |
| 1300 | 1152 | 1163 | 1173 | 1184 | 1195 | 1205 | 1216 | 1226 |
| 1400 | 1181 | 1192 | 1203 | 1214 | 1226 | 1237 | 1248 | 1259 |
| 1500 | 1210 | 1222 | 1234 | 1246 | 1258 | 1270 | 1282 | 1293 |
| 1600 | 1240 | 1252 | 1265 | 1277 | 1290 | 1303 | 1315 | 1328 |
| 1700 | 1369 | 1383 | 1396 | 1409 | 1422 | 1436 | 1449 | 1462 |
| 1800 | 1383 | 1397 | 1411 | 1425 | 1439 | 1453 | 1467 | 1481 |
| 1900 | 1419 | 1434 | 1448 | 1463 | 1474 | 1485 | 1496 | 1508 |
| 2000 | 1454 | 1470 | 1485 | 1500 | 1515 | 1531 | 1546 | 1561 |

| S \ H | 2500 | 2600 | 2700 | 2800 | 3000 | 3200 | 3400 | 3600 | 3800 | 4000 |
|-------------|------|------|------|------|------|-------------|-------------|-------------|-------------|-------------|
| 1500 | 1293 | 1321 | 1337 | 1353 | 1369 | 1393 | 1418 | 1442 | 1467 | 1491 |
| 1600 | 1328 | 1398 | 1415 | 1432 | 1448 | 1474 | 1499 | 1525 | 1550 | 1576 |
| 1700 | 1462 | 1475 | 1493 | 1511 | 1528 | 1555 | 1581 | 1608 | 1634 | 1661 |
| 1800 | 1481 | 1495 | 1513 | 1532 | 1550 | 1578 | 1606 | 1634 | 1661 | 1689 |
| 1900 | 1508 | 1514 | 1533 | 1553 | 1572 | 1601 | 1630 | 1659 | 1688 | 1718 |
| 2000 | 1561 | 1576 | 1597 | 1618 | 1639 | 1669 | 1699 | 1730 | 1760 | 1791 |
| 2200 | 1600 | 1620 | 1641 | 1662 | 1683 | 1715 | 1749 | 1782 | 1815 | 2151 |
| 2400 | 1681 | 1710 | 1738 | 1766 | 1794 | 1822 | 1850 | 1878 | 2235 | 2272 |
| 2600 | 1723 | 1747 | 1771 | 1795 | 1819 | 1884 | 1949 | 2320 | 2357 | 2394 |
| 2800 | 1857 | 1886 | 1914 | 1943 | 1972 | 2001 | 2331 | 2378 | 2426 | 2473 |
| 3000 | 1923 | 1951 | 1978 | 2006 | 2033 | 2385 | 2427 | 2469 | 2510 | 2552 |

Prices in bold refer to doors with heavy system

Options:

- door leaf made of PUR sandwich panel thickness 80 mm - surcharge of 10 EUR/m²
- window, size 400 mm x 600 mm - surcharge of 100 EUR
- lock with patent insert with possibility of opening from the inside - surcharge of 150 EUR
- handle support (lever) for light-weight door - surcharge of 150 EUR (in heavy-weight door this option is included free of charge)

STANDARD SLIDING DOOR - POLYESTER - FERMOD ACCESSORIES - DPS-LF 100 T> -25°C (FREEZER)

Characteristic:

- Door leaf made of sandwich panel with PUR core 100mm
- Door finish - galvanized steel sheet, coated with polyester paint in white colour RAL 9010
- Door leaf framing - steel channel section, made of stainless, acid-proof steel sheet, type 1.4301
- Frame - complex and profiled, made of steel sheet coated with polyester paint in RAL 9010
- Accessories - delivered by FERMOD, made of aluminium
- Lower element - channel section made of stainless, acid-proof steel sheet, type 1.4301

| DPS-LF 100 SINGLE LEAF | | | | | | | | |
|------------------------|------|------|------|------|------|------|------|------|
| S \ H | 1800 | 1900 | 2000 | 2100 | 2200 | 2300 | 2400 | 2500 |
| 800 | 1104 | 1115 | 1126 | 1137 | 1146 | 1156 | 1165 | 1174 |
| 900 | 1120 | 1131 | 1143 | 1154 | 1165 | 1175 | 1185 | 1196 |
| 1000 | 1136 | 1148 | 1159 | 1171 | 1183 | 1195 | 1206 | 1218 |
| 1100 | 1247 | 1271 | 1277 | 1284 | 1297 | 1309 | 1321 | 1334 |
| 1200 | 1264 | 1277 | 1290 | 1303 | 1316 | 1329 | 1342 | 1355 |
| 1300 | 1295 | 1304 | 1312 | 1320 | 1338 | 1356 | 1374 | 1392 |
| 1400 | 1327 | 1342 | 1356 | 1371 | 1385 | 1400 | 1414 | 1429 |
| 1500 | 1358 | 1373 | 1388 | 1404 | 1419 | 1434 | 1449 | 1465 |
| 1600 | 1389 | 1405 | 1421 | 1437 | 1453 | 1469 | 1485 | 1501 |
| 1700 | 1522 | 1539 | 1556 | 1573 | 1589 | 1606 | 1623 | 1640 |
| 1800 | 1539 | 1556 | 1574 | 1591 | 1609 | 1626 | 1644 | 1661 |
| 1900 | 1578 | 1596 | 1614 | 1633 | 1651 | 1669 | 1687 | 1705 |
| 2000 | 1617 | 1636 | 1655 | 1674 | 1693 | 1712 | 1731 | 1750 |

| S \ H | 2500 | 2600 | 2700 | 2800 | 3000 | 3200 | 3400 | 3600 | 3800 | 4000 |
|-------|------|------|------|------|------|-------------|-------------|-------------|-------------|-------------|
| 1500 | 1465 | 1495 | 1515 | 1535 | 1556 | 1586 | 1617 | 1647 | 1678 | 1708 |
| 1600 | 1501 | 1575 | 1597 | 1618 | 1639 | 1672 | 1704 | 1736 | 1767 | 1800 |
| 1700 | 1640 | 1656 | 1679 | 1701 | 1723 | 1757 | 1790 | 1824 | 1857 | 1891 |
| 1800 | 1661 | 1681 | 1704 | 1726 | 1749 | 1783 | 1819 | 1854 | 1889 | 1923 |
| 1900 | 1705 | 1701 | 1725 | 1750 | 1774 | 1810 | 1847 | 1883 | 1920 | 1956 |
| 2000 | 1750 | 1769 | 1794 | 1819 | 1845 | 1860 | 1874 | 1889 | 1904 | 1918 |
| 2200 | 1793 | 1819 | 1844 | 1870 | 1895 | 1917 | 1939 | 1961 | 1983 | 2406 |
| 2400 | 1881 | 1908 | 1936 | 1963 | 1990 | 1990 | 2056 | 2122 | 2488 | 2534 |
| 2600 | 1981 | 2010 | 2040 | 2069 | 2099 | 2146 | 2192 | 2573 | 2617 | 2662 |
| 2800 | 2038 | 2073 | 2108 | 2143 | 2178 | 2212 | 2582 | 2638 | 2694 | 2749 |
| 3000 | 2154 | 2176 | 2198 | 2242 | 2286 | 2635 | 2685 | 2735 | 2786 | 2836 |

Prices in bold refer to doors with heavy system

Options:

- door leaf made of PUR sandwich panel thickness 120 mm - surcharge of 10 EUR/m²
- window, size 400 mm x 600 mm - surcharge of 100 EUR
- lock with patent insert with possibility of opening from the inside - surcharge of 150 EUR
- handle support (lever) for light-weight door - surcharge of 150 EUR (in heavy-weight door this option is included free of charge)

PREMIUM SLIDING DOOR - POLYESTER - FERMOD ACCESSORIES - DPK-LF 60 T>0 °C (COLDROOM)

Characteristic:

- Door leaf thickness 60mm, produced on the press, by high pressure injection of PUR foam into door framework
- Door finish - galvanized steel sheet coated with polyester paint in white colour RAL 9010
- Door leaf core - polyurethane foam, density of minimum 40kg/m³
- Frame - complex and profiled, made of steel sheet coated with polyester paint in RAL 9010
- Accessories - delivered by FERMOD, made of aluminium
- Lower element - channel section made of stainless, acid-proof steel sheet, type 1.4301

| DPK-LF 60 SINGLE LEAF | | | | | | | | |
|-----------------------|------|------|------|------|------|------|------|------|
| S \ H | 1800 | 1900 | 2000 | 2100 | 2200 | 2300 | 2400 | 2500 |
| 800 | 1061 | 1068 | 1075 | 1082 | 1088 | 1095 | 1102 | 1109 |
| 900 | 1074 | 1082 | 1089 | 1097 | 1104 | 1112 | 1119 | 1126 |
| 1000 | 1088 | 1096 | 1104 | 1112 | 1120 | 1128 | 1136 | 1144 |
| 1100 | 1129 | 1138 | 1146 | 1155 | 1164 | 1173 | 1181 | 1190 |
| 1200 | 1170 | 1179 | 1189 | 1198 | 1208 | 1217 | 1227 | 1236 |
| 1300 | 1198 | 1208 | 1218 | 1228 | 1238 | 1248 | 1257 | 1267 |
| 1400 | 1226 | 1230 | 1234 | 1237 | 1241 | 1260 | 1279 | 1298 |
| 1500 | 1253 | 1266 | 1278 | 1290 | 1302 | 1314 | 1326 | 1338 |
| 1600 | 1281 | 1292 | 1304 | 1315 | 1327 | 1347 | 1367 | 1378 |
| 1700 | 1379 | 1392 | 1406 | 1419 | 1432 | 1445 | 1458 | 1472 |
| 1800 | 1477 | 1490 | 1502 | 1515 | 1528 | 1540 | 1553 | 1566 |
| 1900 | 1511 | 1524 | 1538 | 1551 | 1564 | 1577 | 1590 | 1604 |
| 2000 | 1545 | 1561 | 1577 | 1593 | 1609 | 1626 | 1642 | 1749 |

| S \ H | 2500 | 2600 | 2700 | 2800 | 3000 |
|-------|-------------|-------------|-------------|-------------|-------------|
| 1500 | 1338 | 1350 | 1389 | 1427 | 1466 |
| 1600 | 1378 | 1418 | 1431 | 1458 | 1485 |
| 1700 | 1472 | 1554 | 1583 | 1631 | 2036 |
| 1800 | 1566 | 1623 | 1680 | 2042 | 2051 |
| 1900 | 1604 | 1987 | 2033 | 2057 | 2081 |
| 2000 | 1749 | 2037 | 2078 | 2110 | 2141 |
| 2200 | 2053 | 2088 | 2123 | 2163 | 2202 |
| 2400 | 2298 | 2357 | 2415 | 2422 | 2428 |

Prices in bold refer to doors with heavy system

Options:

- door leaf thickness 80 mm - surcharge of 20 EUR/m²
- window, size 400 mm x 600 mm - surcharge of 100 EUR
- lock with patent insert with possibility of opening from the inside - surcharge of 150 EUR
- door made in colour other than RAL 9010 - surcharge of 50 EUR/m²
- handle support (lever) for light-weight door - surcharge of 150 EUR (in heavy-weight door this option is included free of charge)

PREMIUM SLIDING DOOR - POLYESTER - FERMOD ACCESSORIES - DPK-LF 100 T>-25°C (FREEZER)

Characteristic:

- Door leaf thickness 100mm, produced on the press, by high pressure injection of PUR foam into door framework
- Door finish - galvanized steel sheet coated with polyester paint in white colour RAL 9010
- Door leaf core - polyurethane foam, density of minimum 40kg/m³
- Frame - complex and profiled, made of steel sheet coated with polyester paint in RAL 9010
- Accessories - delivered by FERMOD, made of aluminium
- Lower element - channel section made of stainless, acid-proof steel sheet, type 1.4301

| DPK-LF 100 SINGLE LEAF | | | | | | | | |
|------------------------|------|------|------|------|------|------|------|------|
| S \ H | 1800 | 1900 | 2000 | 2100 | 2200 | 2300 | 2400 | 2500 |
| 800 | 1253 | 1264 | 1274 | 1285 | 1296 | 1306 | 1317 | 1328 |
| 900 | 1287 | 1298 | 1309 | 1321 | 1332 | 1343 | 1354 | 1366 |
| 1000 | 1320 | 1332 | 1344 | 1356 | 1368 | 1380 | 1392 | 1404 |
| 1100 | 1336 | 1349 | 1361 | 1374 | 1386 | 1399 | 1412 | 1424 |
| 1200 | 1352 | 1365 | 1378 | 1392 | 1405 | 1418 | 1431 | 1445 |
| 1300 | 1430 | 1445 | 1461 | 1476 | 1491 | 1507 | 1522 | 1537 |
| 1400 | 1508 | 1525 | 1543 | 1560 | 1578 | 1595 | 1613 | 1630 |
| 1500 | 1531 | 1548 | 1566 | 1583 | 1601 | 1618 | 1635 | 1653 |
| 1600 | 1554 | 1571 | 1588 | 1606 | 1623 | 1641 | 1658 | 1675 |
| 1700 | 1577 | 1594 | 1611 | 1629 | 1646 | 1663 | 1681 | 1698 |
| 1800 | 1644 | 1661 | 1679 | 1696 | 1714 | 1732 | 1749 | 1767 |
| 1900 | 1683 | 1702 | 1722 | 1741 | 1761 | 1780 | 1799 | 1819 |
| 2000 | 1722 | 1737 | 1752 | 1782 | 1811 | 1841 | 1870 | 1978 |

| S \ H | 2500 | 2600 | 2700 | 2800 | 3000 |
|-------|-------------|-------------|-------------|-------------|-------------|
| 1500 | 1630 | 1637 | 1645 | 1653 | 1690 |
| 1600 | 1657 | 1658 | 1659 | 1680 | 1701 |
| 1700 | 1698 | 1726 | 1753 | 1758 | 2322 |
| 1800 | 1767 | 1792 | 1816 | 2356 | 2365 |
| 1900 | 1819 | 2312 | 2340 | 2367 | 2394 |
| 2000 | 1978 | 2403 | 2432 | 2462 | 2491 |
| 2200 | 2463 | 2494 | 2525 | 2556 | 2587 |
| 2400 | 2686 | 2721 | 2756 | 2790 | 2825 |

Prices in bold refer to doors with heavy system

Options:

- door leaf thickness 120 mm - surcharge of 20 EUR/m²
- window, size 400 mm x 600 mm - surcharge of 100 EUR
- lock with patent insert with possibility of opening from the inside - surcharge of 150 EUR
- door made in colour other than RAL 9010 - surcharge of 50 EUR/m²
- handle support (lever) for light-weight door - surcharge of 150 EUR (in heavy-weight door this option is included free of charge)

PREMIUM SLIDING DOOR - STAINLESS - FERMOD ACCESSORIES - DPK-NF 60 T>0 °C (COLDROOM)

Characteristic:

- **Door leaf thickness** 60mm, produced on the press, by high pressure injection of PUR foam into door framework
- **Door finish** - stainless, acid-proof steel, type 1.4301, mat surface 2B or grinded surface 4N (option)
- **Door leaf core** - polyurethane foam, density of minimum 40kg/m³
- **Frame** - complex and profiled, made of stainless, acid-proof steel, type 1.4301, mat surface 2B or grinded surface 4N (option)
- **Accessories** - delivered by FERMOD, made of aluminium
- **Lower element** - channel section made of stainless, acid-proof steel sheet, type 1.4301

| DPK-NF 60 SINGLE LEAF | | | | | | | | |
|-----------------------|------|------|------|------|------|------|------|------|
| S \ H | 1800 | 1900 | 2000 | 2100 | 2200 | 2300 | 2400 | 2500 |
| 800 | 1218 | 1232 | 1246 | 1260 | 1274 | 1288 | 1302 | 1316 |
| 900 | 1242 | 1257 | 1272 | 1287 | 1302 | 1317 | 1332 | 1347 |
| 1000 | 1266 | 1290 | 1315 | 1327 | 1340 | 1353 | 1365 | 1378 |
| 1100 | 1314 | 1331 | 1348 | 1365 | 1382 | 1399 | 1416 | 1433 |
| 1200 | 1362 | 1380 | 1398 | 1416 | 1434 | 1452 | 1471 | 1489 |
| 1300 | 1402 | 1421 | 1441 | 1460 | 1479 | 1498 | 1517 | 1536 |
| 1400 | 1443 | 1463 | 1483 | 1504 | 1524 | 1544 | 1564 | 1584 |
| 1500 | 1489 | 1511 | 1532 | 1553 | 1574 | 1595 | 1617 | 1638 |
| 1600 | 1536 | 1554 | 1572 | 1590 | 1608 | 1639 | 1670 | 1692 |
| 1700 | 1636 | 1659 | 1682 | 1706 | 1729 | 1752 | 1776 | 1799 |
| 1800 | 1736 | 1760 | 1784 | 1809 | 1833 | 1858 | 1882 | 1906 |
| 1900 | 1780 | 1805 | 1831 | 1856 | 1882 | 1907 | 1933 | 1958 |
| 2000 | 1824 | 1855 | 1886 | 1917 | 1948 | 1979 | 2010 | 2117 |

| S \ H | 2500 | 2600 | 2700 | 2800 | 3000 |
|-------------|------|------|------|------|------|
| 1500 | 1638 | 1650 | 1709 | 1768 | 1827 |
| 1600 | 1692 | 1732 | 1772 | 1813 | 1853 |
| 1700 | 1799 | 1852 | 1904 | 1930 | 2297 |
| 1800 | 1906 | 1931 | 1955 | 2317 | 2338 |
| 1900 | 1958 | 2360 | 2400 | 2430 | 2420 |
| 2000 | 2117 | 2448 | 2499 | 2542 | 2585 |
| 2200 | 2474 | 2497 | 2598 | 2625 | 2750 |
| 2400 | 2788 | 2882 | 2977 | 2989 | 3001 |

Prices in bold refer to doors with heavy system

Options:

- door leaf thickness 80 mm - surcharge of 20 EUR/m²
- window, size 400 mm x 600 mm - surcharge of 100 EUR
- lock with patent insert with possibility of opening from the inside - surcharge of 175 EUR
- grained door surface - surcharge of 10%
- handle support (lever) for light-weight door - surcharge of 150 EUR (in heavy-weight door this option is included free of charge)

PREMIUM SLIDING DOOR - STAINLESS - FERMOD ACCESSORIES - DPK-NF 100 T>-25 °C (FREEZER)

Characteristic:

- Door leaf thickness 100mm, produced on the press, by high pressure injection of PUR foam into door framework
- Door finish - stainless, acid-proof steel, type 1.4301, mat surface 2B or grinded surface 4N (option)
- Door leaf core - polyurethane foam, density of minimum 40kg/m³
- Heated frame - complex and profiled, made of stainless, acid-proof steel, type 1.4301, mat surface 2B or grinded surface 4N (option)
- Accessories - delivered by FERMOD, made of aluminium
- Lower element - channel section made of stainless, acid-proof steel sheet, type 1.4301

| DPK-NF 100 SINGLE LEAF | | | | | | | | |
|------------------------|------|------|------|------|------|------|------|------|
| S \ H | 1800 | 1900 | 2000 | 2100 | 2200 | 2300 | 2400 | 2500 |
| 800 | 1413 | 1432 | 1450 | 1468 | 1486 | 1505 | 1523 | 1541 |
| 900 | 1457 | 1477 | 1496 | 1516 | 1535 | 1554 | 1574 | 1593 |
| 1000 | 1501 | 1522 | 1542 | 1563 | 1583 | 1604 | 1625 | 1645 |
| 1100 | 1531 | 1553 | 1575 | 1597 | 1618 | 1640 | 1662 | 1684 |
| 1200 | 1561 | 1584 | 1607 | 1630 | 1653 | 1676 | 1699 | 1722 |
| 1300 | 1635 | 1661 | 1686 | 1711 | 1736 | 1761 | 1786 | 1812 |
| 1400 | 1710 | 1737 | 1764 | 1792 | 1819 | 1846 | 1874 | 1901 |
| 1500 | 1731 | 1758 | 1784 | 1811 | 1837 | 1864 | 1890 | 1916 |
| 1600 | 1753 | 1781 | 1809 | 1836 | 1864 | 1892 | 1920 | 1947 |
| 1700 | 1837 | 1866 | 1895 | 1924 | 1953 | 1982 | 2011 | 2040 |
| 1800 | 1922 | 1952 | 1982 | 2012 | 2042 | 2072 | 2102 | 2132 |
| 1900 | 1972 | 2003 | 2035 | 2066 | 2097 | 2128 | 2160 | 2191 |
| 2000 | 2023 | 2061 | 2098 | 2136 | 2174 | 2212 | 2250 | 2356 |

| S \ H | 2500 | 2600 | 2700 | 2800 | 3000 |
|-------|-------------|-------------|-------------|-------------|-------------|
| 1500 | 1916 | 1935 | 1993 | 2051 | 2109 |
| 1600 | 1947 | 2010 | 2060 | 2073 | 2086 |
| 1700 | 2040 | 2084 | 2126 | 2159 | 2814 |
| 1800 | 2132 | 2159 | 2192 | 2787 | 2825 |
| 1900 | 2191 | 2716 | 2760 | 2803 | 2847 |
| 2000 | 2356 | 2837 | 2883 | 2930 | 2977 |
| 2200 | 2907 | 2957 | 3007 | 3057 | 3106 |
| 2400 | 3184 | 3240 | 3295 | 3351 | 3407 |

Prices in bold refer to doors with heavy system

Options:

- door leaf thickness 120 mm - surcharge of 20 EUR/m²
- window, size 400 mm x 600 mm - surcharge of 100 EUR
- lock with patent insert with possibility of opening from the inside - surcharge of 175 EUR
- grained door surface - surcharge of 10%
- handle support (lever) for light-weight door - surcharge of 150 EUR (in heavy-weight door this option is included free of charge)



GAS-TIGHT SLIDING DOORS, “DPG” TYPE

APPLICATION

DPG doors are applied in rooms with controlled atmosphere (KA), which is the best technology to store fruits and vegetables. In standard coldrooms fruits are stored in normal atmosphere containing 21% of oxygen and 0% carbon dioxide. In controlled atmosphere the content of oxygen is below 3% and the content of carbon dioxide is below 5%. This leads to prolongation of fruits and vegetables store period without losing their quality.

DPG - lightweight, up to 120 kg

DPG - heavyweight, up to 200 kg

DOOR LEAF

DP doors are available in 2 versions: In DSPG (STANDARD) version door leaf is made of sandwich panel with PUR core and framed by steel channel section. In DPKG (PREMIUM) version door leaf is produced on the press, by high pressure injection of PUR foam into door framework. The density of PUR core is not less than 40kg/m^3 .

Available thicknesses:

- 80mm

STANDARD door leaf finish (sandwich panel):

- Galvanized steel sheet (L) thickness 0,5mm, coated with polyester paint in white colour RAL 9010

PREMIUM door leaf finish:

- Stainless, acid-proof steel (N), type 1.4301, thickness 0,8mm, mat surface 2B
- Galvanized steel sheet (L) thickness 0,75mm, coated with polyester paint in white colour RAL 9010

Door leaf is equipped with gasket delivered by FERMOD (F), eccentric ball valves one for gas filling of the room, the other in order to take samples from the room atmosphere clamps to ensure door leaf tightness, revision window 528x828mm, closed with a key.

FRAME TYPE

In both DSPG and DPKG version door frame is filled with PUR foam. It is made of stainless, acid-proof steel (N), type 1.4301, thickness 0,8mm, mat surface 2B or galvanized steel sheet (T) thickness 0,75mm, coated with polyester paint in white colour (RAL 9010).

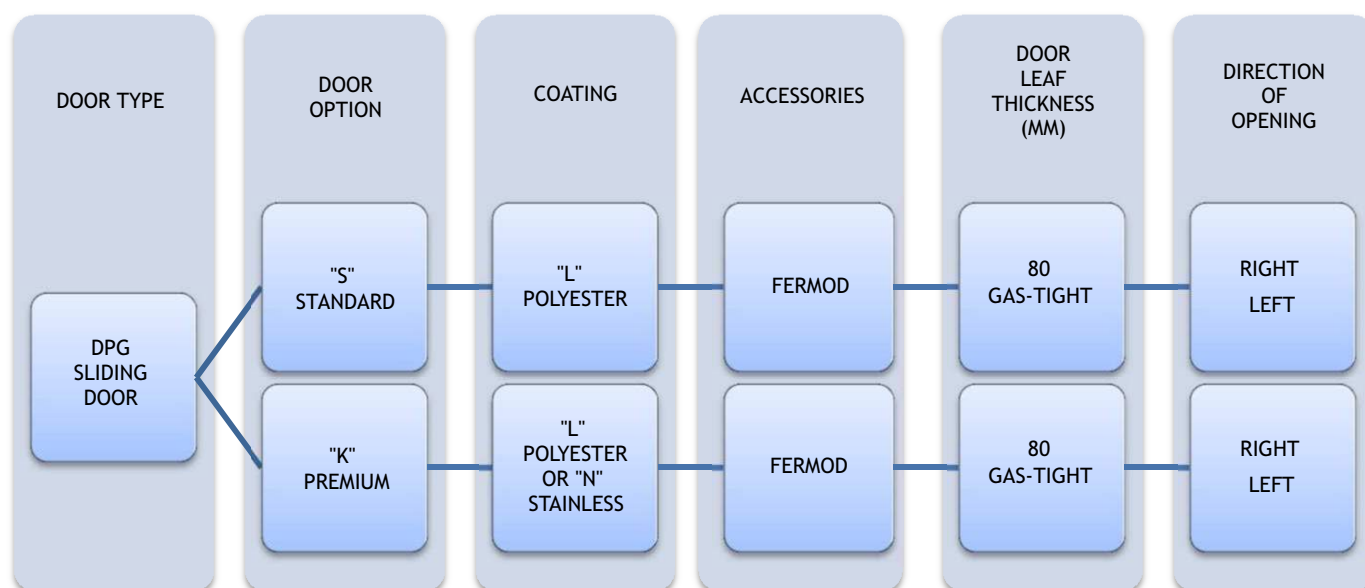
Lock is delivered by RAHRBACH. It is equipped with patent insert with possibility of emergency opening from the inside even if the door is locked.

SUSPENSION SYSTEM

- FERMOD suspension system (F), aluminium rail - lightweight type
- FERMOD suspension system (F), galvanized steel or stainless steel rail - heavyweight type

OPTIONS

- Untypical door leaf finish:
 - Stainless, acid-proof steel (N), type 1.4301, thickness 0,8mm, grinded surface 4B or grained surface
 - Galvanized steel sheet (L) coated with polyester paint other than white (RAL 9010)
- Availability to produce door with and without a threshold (lower element is installed in the floor)
- Flashing of the door opening



Enquiry/order example:



DPKG-NF 80 - Premium gas-tight coldroom sliding door, stainless steel finish, FERMOD accessories, door leaf thickness 80mm, direction of opening to the right.

STANDARD SLIDING DOOR - POLYESTER - FERMOD ACCESSORIES - DPSG-LF 80 T>0 °C (GAS-TIGHT)

Characteristic:

- Door leaf made of sandwich panel with PUR core 80mm
- Door finish - galvanized steel sheet coated with polyester paint in white colour RAL 9010
- Door leaf framing - steel channel section, made of stainless, acid-proof steel sheet, type 1.4301
- Frame - complex and profiled, made of steel sheet coated with polyester paint in RAL 9010
- Accessories - delivered by FERMOD, made of aluminium
- Lower element - channel section made of stainless, acid-proof steel sheet, type 1.4301
- Eccentric ball valves - one for gas filling of the room, the other in order to take samples from the room atmosphere
- clamps - ensure door leaf tightness
- revision window - dimension of 528x828mm

| DPSG-LF 80 SINGLE LEAF | | | | | | | | |
|------------------------|------|------|------|------|------|------|------|------|
| S \ H | 1800 | 1900 | 2000 | 2100 | 2200 | 2300 | 2400 | 2500 |
| 800 | 1748 | 1754 | 1761 | 1768 | 1776 | 1783 | 1789 | 1797 |
| 900 | 1761 | 1769 | 1776 | 1784 | 1792 | 1799 | 1807 | 1815 |
| 1000 | 1774 | 1783 | 1791 | 1800 | 1808 | 1816 | 1824 | 1833 |
| 1100 | 1874 | 1883 | 1892 | 1901 | 1910 | 1919 | 1928 | 1937 |
| 1200 | 1888 | 1897 | 1907 | 1917 | 1926 | 1936 | 1945 | 1955 |
| 1300 | 1915 | 1926 | 1936 | 1946 | 1956 | 1967 | 1977 | 1987 |
| 1400 | 1943 | 1954 | 1965 | 1976 | 1987 | 1998 | 2008 | 2019 |
| 1500 | 1972 | 1983 | 1995 | 2006 | 2018 | 2030 | 2041 | 2053 |
| 1600 | 2000 | 2013 | 2025 | 2037 | 2049 | 2062 | 2074 | 2086 |
| 1700 | 2127 | 2140 | 2152 | 2165 | 2178 | 2191 | 2204 | 2217 |
| 1800 | 2140 | 2154 | 2167 | 2181 | 2194 | 2208 | 2221 | 2235 |
| 1900 | 2175 | 2189 | 2203 | 2217 | 2228 | 2239 | 2250 | 2261 |
| 2000 | 2209 | 2224 | 2239 | 2254 | 2268 | 2283 | 2298 | 2313 |

| S \ H | 2500 | 2600 | 2700 | 2800 | 3000 | 3200 | 3400 | 3600 | 3800 | 4000 |
|-------|------|------|------|------|------|-------------|-------------|-------------|-------------|-------------|
| 1500 | 2053 | 2080 | 2095 | 2110 | 2126 | 2149 | 2173 | 2197 | 2221 | 2245 |
| 1600 | 2086 | 2155 | 2171 | 2187 | 2203 | 2228 | 2253 | 2278 | 2303 | 2327 |
| 1700 | 2217 | 2229 | 2247 | 2264 | 2281 | 2307 | 2333 | 2358 | 2384 | 2410 |
| 1800 | 2235 | 2248 | 2266 | 2284 | 2302 | 2329 | 2356 | 2383 | 2411 | 2437 |
| 1900 | 2261 | 2267 | 2286 | 2305 | 2324 | 2352 | 2380 | 2409 | 2437 | 2465 |
| 2000 | 2313 | 2328 | 2348 | 2368 | 2388 | 2418 | 2448 | 2477 | 2507 | 2537 |
| 2200 | 2350 | 2371 | 2391 | 2411 | 2431 | 2463 | 2496 | 2528 | 2560 | 2931 |
| 2400 | 2430 | 2457 | 2485 | 2512 | 2539 | 2567 | 2594 | 2621 | 3014 | 3052 |
| 2600 | 2470 | 2494 | 2517 | 2541 | 2564 | 2627 | 2690 | 3100 | 3137 | 3173 |
| 2800 | 2601 | 2629 | 2657 | 2685 | 2713 | 2741 | 3110 | 3158 | 3205 | 3253 |
| 3000 | 2665 | 2692 | 2719 | 2745 | 2772 | 3165 | 3206 | 3248 | 3290 | 3332 |

Prices in bold refer to doors with heavy system

Options:

- lock with patent insert with possibility of opening from the inside - surcharge of 175 EUR
- handle support (lever) for light-weight door - surcharge of 150 EUR (in heavy-weight door this option is included free of charge)

PREMIUM SLIDING DOOR - POLYESTER - FERMOD ACCESSORIES - DPKG-LF 80 T>0 °C (GAS-TIGHT)

Characteristic:

- Door leaf thickness 80mm, produced on the press, by high pressure injection of PUR foam into door framework
- Door finish - galvanized steel sheet coated with polyester paint in white colour RAL 9010
- Door leaf core - polyurethane foam, density of minimum 40kg/m³
- Frame - complex and profiled, made of steel sheet coated with polyester paint in RAL 9010
- Accessories - delivered by FERMOD, made of aluminium
- Lower element - channel section made of stainless, acid-proof steel sheet, type 1.4301
- Eccentric ball valves - one for gas filling of the room, the other in order to take samples from the room atmosphere
- clamps - ensure door leaf tightness
- revision window - dimension of 528x828mm

| DPKG-LF 80 SINGLE LEAF | | | | | | | | |
|------------------------|------|------|------|------|------|------|------|------|
| S \ H | 1800 | 1900 | 2000 | 2100 | 2200 | 2300 | 2400 | 2500 |
| 800 | 1897 | 1904 | 1911 | 1918 | 1925 | 1933 | 1940 | 1947 |
| 900 | 1911 | 1918 | 1926 | 1934 | 1942 | 1950 | 1958 | 1965 |
| 1000 | 1925 | 1933 | 1942 | 1950 | 1958 | 1967 | 1975 | 1984 |
| 1100 | 1968 | 1977 | 1986 | 1996 | 2005 | 2014 | 2023 | 2032 |
| 1200 | 2011 | 2021 | 2031 | 2041 | 2051 | 2061 | 2071 | 2081 |
| 1300 | 2041 | 2051 | 2061 | 2072 | 2082 | 2093 | 2103 | 2113 |
| 1400 | 2070 | 2080 | 2090 | 2100 | 2110 | 2122 | 2134 | 2146 |
| 1500 | 2099 | 2112 | 2125 | 2137 | 2150 | 2163 | 2175 | 2188 |
| 1600 | 2128 | 2114 | 2152 | 2164 | 2176 | 2197 | 2218 | 2230 |
| 1700 | 2231 | 2245 | 2259 | 2273 | 2287 | 2301 | 2315 | 2329 |
| 1800 | 2335 | 2348 | 2361 | 2374 | 2388 | 2401 | 2414 | 2428 |
| 1900 | 2370 | 2384 | 2398 | 2412 | 2426 | 2440 | 2454 | 2468 |
| 2000 | 2406 | 2423 | 2440 | 2457 | 2474 | 2491 | 2508 | 2621 |

| S \ H | 2500 | 2600 | 2700 | 2800 | 3000 |
|-------------|------|------|------|------|------|
| 1500 | 2188 | 2201 | 2241 | 2282 | 2322 |
| 1600 | 2230 | 2267 | 2292 | 2317 | 2343 |
| 1700 | 2329 | 2415 | 2445 | 2497 | 2922 |
| 1800 | 2428 | 2488 | 2548 | 2929 | 2938 |
| 1900 | 2468 | 2871 | 2919 | 2945 | 2970 |
| 2000 | 2621 | 2924 | 2967 | 3000 | 3034 |
| 2200 | 2940 | 2978 | 3015 | 3056 | 3098 |
| 2400 | 3078 | 3137 | 3195 | 3201 | 3208 |

Prices in bold refer to doors with heavy system

Options:

- lock with patent insert with possibility of opening from the inside - surcharge of 175 EUR
- door made in colour other than RAL 9010 - surcharge of 50 EUR/m²
- handle support (lever) for light-weight door - surcharge of 150 EUR (in heavy-weight door this option is included free of charge)

PREMIUM SLIDING DOOR - STAINLESS - FERMOD ACCESSORIES - DPKG-NF 80 T>0 °C (GAS-TIGHT)

Characteristic:

- Door leaf thickness 80mm, produced on the press, by high pressure injection of PUR foam into door framework
- Door finish -stainless, acid-proof steel, type 1.4301, mat surface 2B or grinded surface 4N (option)
- Door leaf core - polyurethane foam, density of minimum 40kg/m³
- Heated frame - complex and profiled, made of stainless, acid-proof steel, type 1.4301, mat surface 2B or grinded surface 4N (option)
- Accessories - delivered by FERMOD, made of aluminium
- Lower element - channel section made of stainless, acid-proof steel sheet, type 1.4301
- Eccentric ball valves - one for gas filling of the room, the other in order to take samples from the room atmosphere
- clamps - ensure door leaf tightness
- revision window - dimension of 528x828mm

| DPKG-NF 80 SINGLE LEAF | | | | | | | | |
|------------------------|------|------|------|------|------|------|------|------|
| S \ H | 1800 | 1900 | 2000 | 2100 | 2200 | 2300 | 2400 | 2500 |
| 800 | 2062 | 2076 | 2091 | 2106 | 2121 | 2135 | 2150 | 2165 |
| 900 | 2087 | 2103 | 2118 | 2134 | 2150 | 2166 | 2182 | 2197 |
| 1000 | 2112 | 2138 | 2164 | 2177 | 2190 | 2204 | 2217 | 2230 |
| 1100 | 2163 | 2180 | 2199 | 2216 | 2234 | 2252 | 2270 | 2288 |
| 1200 | 2213 | 2232 | 2251 | 2270 | 2290 | 2309 | 2328 | 2347 |
| 1300 | 2256 | 2276 | 2296 | 2316 | 2337 | 2357 | 2377 | 2397 |
| 1400 | 2299 | 2320 | 2341 | 2362 | 2384 | 2405 | 2426 | 2447 |
| 1500 | 2348 | 2370 | 2392 | 2415 | 2437 | 2459 | 2482 | 2504 |
| 1600 | 2396 | 2415 | 2434 | 2453 | 2472 | 2504 | 2537 | 2561 |
| 1700 | 2502 | 2526 | 2551 | 2575 | 2600 | 2624 | 2649 | 2673 |
| 1800 | 2606 | 2632 | 2658 | 2684 | 2709 | 2735 | 2761 | 2786 |
| 1900 | 2653 | 2680 | 2707 | 2734 | 2760 | 2787 | 2814 | 2841 |
| 2000 | 2700 | 2732 | 2765 | 2798 | 2830 | 2863 | 2895 | 3009 |

| S \ H | 2500 | 2600 | 2700 | 2800 | 3000 |
|-------------|-------------|-------------|-------------|-------------|-------------|
| 1500 | 2504 | 2542 | 2597 | 2652 | 2707 |
| 1600 | 2561 | 2603 | 2645 | 2688 | 2730 |
| 1700 | 2673 | 2729 | 2784 | 2811 | 3197 |
| 1800 | 2786 | 2812 | 2838 | 3219 | 3240 |
| 1900 | 2841 | 3264 | 3306 | 3337 | 3327 |
| 2000 | 3009 | 3357 | 3411 | 3456 | 3501 |
| 2200 | 3384 | 3409 | 3515 | 3542 | 3674 |
| 2400 | 3567 | 3662 | 3757 | 3596 | 3781 |

Prices in bold refer to doors with heavy system

Options:

- lock with patent insert with possibility of opening from the inside - surcharge of 175 EUR
- grained door surface - surcharge of 10%
- handle support (lever) for light-weight door - surcharge of 150 EUR (in heavy-weight door this option is included free of charge)

UNIVERSAL HINGED DOORS, “DRU” TYPE



APPLICATION

DRU are multifunctional hinged doors which can be applied in different conditions and locations, such as industrial objects, production facilities store houses, etc. The structure of the door ensures its strength and durability. High insulation value has been achieved thanks to polyurethane foam core (PUR).

DOOR LEAF

Door leaf is produced on the press, by high pressure injection of PUR foam into door framework. The density of PUR core is not less than 40kg/m^3 .

Available thickness

- 50mm - single or double-leaf

Door leaf finish

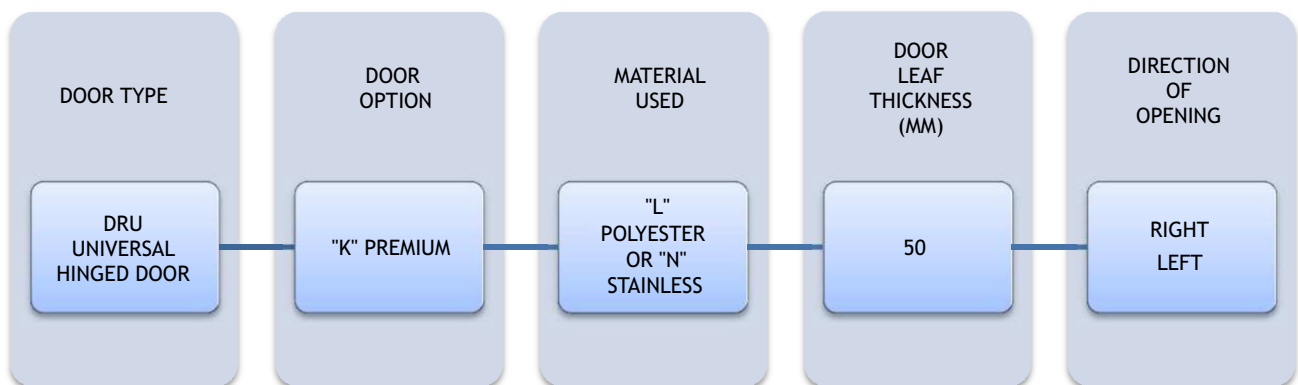
- stainless, stainless, acid-proof steel (N), type 1.4301, thickness 0,8mm, mat surface 2B
- galvanized steel sheet 0,75mm coated with polyester paint in white colour RAL 9010

ACCESSORIES

- lock with patent insert
- handle or knob made of stainless, acid-proof steel, type 1.4301
- hinges made of stainless, acid-proof steel, type 1.4301
- bolt in double-leaf door

OPTIONS

- Untypical door leaf finish:
 - Stainless, acid-proof steel (N), type 1.4301, thickness 0,8mm, grinded surface 4B or grained surface
 - Galvanized steel sheet (T) thickness 0,75mm, coated with polyester paint other than white
 - Polyester laminate PECOLIT in RAL 9016 with stainless, acid-proof door leaf framing (N), type 1.4301
- Availability to produce door with and without a threshold (lower element is installed in the floor)
- Door pump
- Electric hook
- Door windows:
 - Round window ø280mm
 - Window in a different shape (special enquiry)
 - Execution of opening for a individual glazing
- Ventilation bar:
 - Dimension 455x135 mm
 - Other dimension and shape - individual enquiry
- Flashing of the door opening



Enquiry/order example:



DRU-L - Universal hinged door, polyester paint finish, door leaf thickness 50mm, direction of opening to the right.

UNIVERSAL HINGED DOORS, STAINLESS

DRU-N T>0 °C

Characteristic:

- **Door leaf** thickness 50mm, produced on the press, by high pressure injection of PUR foam into door framework
- **Door finish** - stainless, acid-proof steel, type 1.4301, mat surface 2B or grinded surface 4N (option)
- **Door leaf core** - polyurethane foam, density of minimum 40kg/m³
- **Door closing** - lock with patent insert + stainless, acid-proof handle
- **Hinges** - stainless, acid-proof, type 1.4301
- **Frame** - complex and profiled, made of stainless, acid-proof steel, type 1.4301, mat surface 2B or grinded surface 4N (option)

| DRU-N 50 SINGLE LEAF | | | |
|----------------------|------|------|------|
| S \ H | 2000 | 2100 | 2200 |
| 800 | 555 | 569 | 584 |
| 900 | 592 | 606 | 620 |
| 1000 | 615 | 629 | 642 |
| 1100 | 635 | 672 | 709 |
| 1200 | 684 | 696 | 743 |
| 1300 | 706 | 721 | 754 |
| 1400 | 729 | 746 | 766 |
| 1500 | 751 | 771 | 772 |

| DRU-N 50 DOUBLE LEAF | | | | | | | |
|----------------------|------|------|------|------|------|------|------|
| S \ H | 2000 | 2100 | 2200 | 2300 | 2400 | 2500 | 2600 |
| 1200 | 943 | 976 | 1008 | 1029 | 1049 | 1070 | 1091 |
| 1300 | 968 | 1001 | 1035 | 1056 | 1078 | 1100 | 1121 |
| 1400 | 992 | 1027 | 1061 | 1084 | 1106 | 1129 | 1152 |
| 1500 | 1016 | 1052 | 1088 | 1111 | 1135 | 1159 | 1182 |
| 1600 | 1041 | 1077 | 1114 | 1139 | 1164 | 1188 | 1213 |
| 1700 | 1065 | 1103 | 1141 | 1166 | 1192 | 1218 | 1244 |
| 1800 | 1089 | 1128 | 1167 | 1194 | 1221 | 1247 | 1274 |
| 1900 | 1156 | 1188 | 1221 | 1249 | 1277 | 1305 | 1333 |
| 2000 | 1222 | 1249 | 1275 | 1304 | 1333 | 1362 | 1391 |
| 2100 | 1246 | 1277 | 1309 | 1339 | 1368 | 1398 | 1438 |
| 2200 | 1271 | 1307 | 1342 | 1373 | 1404 | 1435 | 1485 |
| 2300 | 1296 | 1335 | 1375 | 1407 | 1439 | 1471 | 1516 |
| 2400 | 1321 | 1364 | 1408 | 1441 | 1474 | 1507 | 1547 |
| 2500 | 1346 | 1394 | 1441 | 1475 | 1509 | 1543 | 1577 |

Grained door surface - surcharge of 16%

Options:

- grained door surface - surcharge of 16%

UNIVERSAL HINGEND DOORS, POLYESTER DRU-L T>0 °C

Characteristic:

- **Door leaf** thickness 50mm, produced on the press, by high pressure injection of PUR foam into door framework
- **Door finish** - galvanized steel sheet coated with polyester paint in white colour RAL 9010
- **Door leaf core** - polyurethane foam, density of minimum 40kg/m³
- **Door closing** - lock with patent insert + stainless, acid-proof handle
- **Hinges** - stainless, acid-proof, type 1.4301
- **Frame** - complex and profiled, made of stainless, acid-proof steel, type 1.4301, mat surface 2B or grinded surface 4N (option)

| DRU-L 50 SINGLE LEAF | | | |
|----------------------|------|------|------|
| S \ H | 2000 | 2100 | 2200 |
| 800 | 420 | 426 | 433 |
| 900 | 420 | 427 | 434 |
| 1000 | 432 | 450 | 469 |
| 1100 | 453 | 482 | 510 |
| 1200 | 486 | 493 | 521 |
| 1300 | 498 | 506 | 532 |
| 1400 | 510 | 519 | 543 |
| 1500 | 522 | 532 | 548 |

| DRU-L 50 DOUBLE LEAF | | | | | | | | |
|----------------------|------|------|------|------|------|------|------|--|
| S \ H | 2000 | 2100 | 2200 | 2300 | 2400 | 2500 | 2600 | |
| 1200 | 729 | 739 | 749 | 760 | 770 | 792 | 815 | |
| 1300 | 741 | 752 | 763 | 774 | 784 | 807 | 830 | |
| 1400 | 754 | 765 | 776 | 787 | 799 | 822 | 846 | |
| 1500 | 766 | 778 | 789 | 801 | 813 | 837 | 861 | |
| 1600 | 778 | 790 | 803 | 815 | 827 | 852 | 877 | |
| 1700 | 790 | 803 | 816 | 829 | 842 | 867 | 892 | |
| 1800 | 803 | 816 | 829 | 843 | 856 | 882 | 907 | |
| 1900 | 843 | 863 | 883 | 890 | 897 | 924 | 951 | |
| 2000 | 855 | 881 | 908 | 908 | 908 | 937 | 965 | |
| 2100 | 897 | 911 | 954 | 957 | 961 | 988 | 1025 | |
| 2200 | 916 | 936 | 975 | 982 | 989 | 1013 | 1059 | |
| 2300 | 935 | 960 | 995 | 1006 | 1016 | 1038 | 1074 | |
| 2400 | 954 | 985 | 1016 | 1030 | 1044 | 1064 | 1090 | |
| 2500 | 973 | 1005 | 1037 | 1054 | 1071 | 1089 | 1106 | |

Options:

- door made in colour other than RAL 9010 - surcharge of 50 EUR/m²

SWING DOORS, “DW” TYPE



APPLICATION

DW doors are great solution for industrial gateways with high number of passages (production facilities, supermarkets, restaurants, shops, etc.). The structure of the door ensures its strength and durability. High insulation value has been achieved thanks to polyurethane foam core (PUR).

DOOR LEAF

Door leaf is produced on the press, by high pressure injection of PUR foam into door framework. The density of PUR core is not less than 40kg/m^3 .

DOOR LEAF FINISH

- Stainless, stainless, acid-proof steel (N), type 1.4301, thickness 0,8mm, mat surface 2B
- Galvanized steel sheet 0,75mm coated with polyester paint in white colour RAL 9010

Swing doors are equipped with round stainless, acid-proof window, diameter of $\varnothing 280\text{mm}$ (standard).

Swing doors can be produced in single or double-leaf option.

FRAME

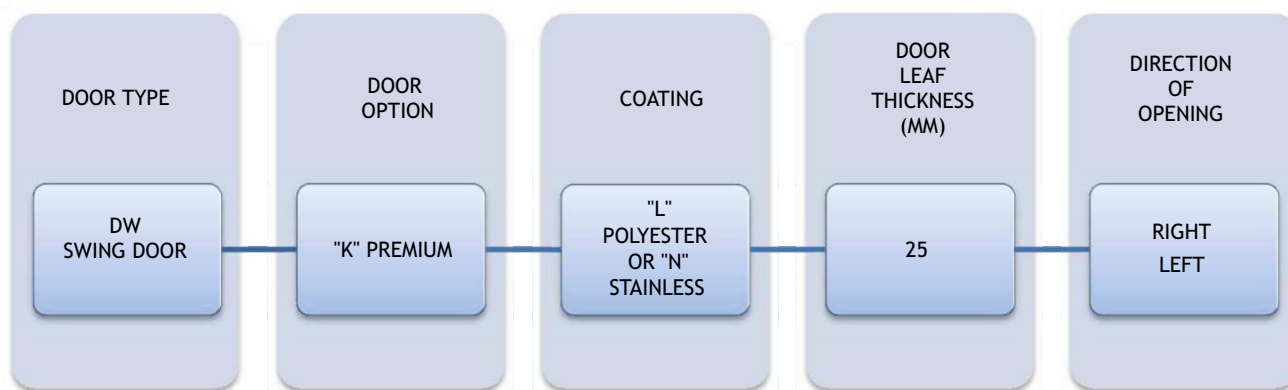
Swing doors DW installed to sandwich panel are equipped in frame in the shape of channel section, in case the DW doors are installed to brick wall are equipped in installation profile. Both channel section and installation profile are made of made of stainless, acid-proof steel, type 1.4301 or galvanized steel sheet coated with polyester paint in white colour RAL 9010.

HINGES

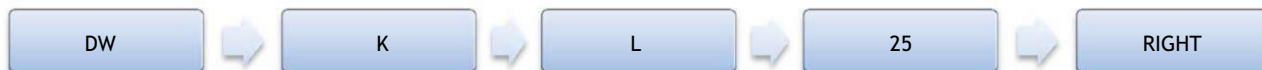
Hinges are delivered by FERMOD and are made of stainless, acid-proof steel or PVC with “STOP” function.

OPTION

- Untypical door leaf finish:
 - Stainless, acid-proof steel (N), type 1.4301, thickness 0,8mm, grinded surface 4B or grained surface
 - Galvanized steel sheet (T) thickness 0,75mm, coated with polyester paint other than white
 - Polyester laminate PECOLIT in RAL 9016 with stainless, acid-proof door leaf framing (N), type 1.4301
- Door windows:
 - Window in a different shape (special enquiry)
 - Execution of opening for a individual glazing
- Flashing of the door opening
- Execution in composite material PE 500



Enquiry/order example:



DW-L - swing door, polyester paint finish, door leaf thickness 25mm, direction of opening to the right.

SWING DOORS, POLYESTER DW-L T>0 °C

Characteristic:

- **Door leaf** thickness 25mm, produced on the press, by high pressure injection of PUR foam into door framework
- **Door finish** - galvanized steel sheet coated with polyester paint in white colour RAL 9010
- **Door leaf core** - polyurethane foam, density of minimum 40kg/m³
- **Hinges** - stainless, acid-proof, type 1.4301
- **Window** - round shape, stainless, acid-proof, type 1.4301
- **Buffers** preventing against damages

| DW-L SINGLE LEAF | | | | | | |
|------------------|------|------|------|------|------|------|
| S \ H | 2000 | 2100 | 2200 | 2300 | 2400 | 2500 |
| 700 | 521 | 525 | 529 | 533 | 538 | 542 |
| 800 | 530 | 534 | 539 | 543 | 548 | 553 |
| 900 | 538 | 543 | 548 | 554 | 559 | 564 |
| 1000 | 547 | 553 | 558 | | | |
| 1100 | 556 | 562 | 568 | | | |
| 1200 | 565 | 572 | 578 | | | |
| 1300 | 574 | 581 | 588 | | | |

| DW-L DOUBLE LEAF | | | | | | |
|------------------|------|------|------|------|------|------|
| S \ H | 2000 | 2100 | 2200 | 2300 | 2400 | 2500 |
| 1200 | 960 | 968 | 977 | 985 | 993 | 1001 |
| 1300 | 977 | 985 | 994 | 1003 | 1012 | 1020 |
| 1400 | 993 | 1002 | 1012 | 1021 | 1030 | 1039 |
| 1500 | 1009 | 1019 | 1029 | 1039 | 1048 | 1058 |
| 1600 | 1026 | 1036 | 1046 | 1057 | 1067 | 1077 |
| 1700 | 1042 | 1053 | 1064 | 1075 | 1086 | 1096 |
| 1800 | 1059 | 1070 | 1081 | 1093 | 1104 | 1115 |
| 1900 | 1075 | 1087 | 1099 | 1111 | 1122 | 1134 |
| 2000 | 1091 | 1104 | 1116 | | | |
| 2100 | 1108 | 1121 | 1134 | | | |
| 2200 | 1124 | 1138 | 1151 | | | |
| 2300 | 1140 | 1155 | 1168 | | | |
| 2400 | 1157 | 1172 | 1186 | | | |
| 2500 | 1173 | 1188 | 1203 | | | |
| 2600 | 1190 | 1205 | 1221 | | | |

Options:

- door made in colour other than RAL 9010 - surcharge of 50 EUR/m²

SWING DOORS, STAINLESS DW-N T>0 °C

Characteristic:

- **Door leaf** thickness 25mm, produced on the press, by high pressure injection of PUR foam into door framework
- **Door finish** - stainless, acid-proof steel, type 1.4301, mat surface 2B or grinded surface 4N (option)
- **Door leaf core** - polyurethane foam, density of minimum 40kg/m³
- **Hinges** - stainless, acid-proof, type 1.4301
- **Window** - round shape, stainless, acid-proof, type 1.4301
- **Buffers** preventing against damages

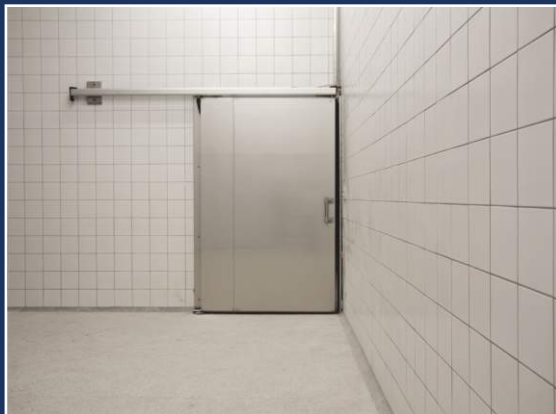
| DW-N SINGLE LEAF | | | | | | |
|------------------|------|------|------|------|------|------|
| S \ H | 2000 | 2100 | 2200 | 2300 | 2400 | 2500 |
| 700 | 638 | 648 | 658 | 668 | 677 | 687 |
| 800 | 658 | 669 | 679 | 690 | 701 | 711 |
| 900 | 678 | 690 | 701 | 713 | 725 | 736 |
| 1000 | 698 | 711 | 723 | | | |
| 1100 | 718 | 732 | 745 | | | |
| 1200 | 738 | 753 | 767 | | | |
| 1300 | 758 | 774 | 789 | | | |

| DW-N DOUBLE LEAF | | | | | | |
|------------------|------|------|------|------|------|------|
| S \ H | 2000 | 2100 | 2200 | 2300 | 2400 | 2500 |
| 1200 | 1144 | 1161 | 1177 | 1194 | 1210 | 1227 |
| 1300 | 1172 | 1190 | 1207 | 1224 | 1242 | 1260 |
| 1400 | 1200 | 1218 | 1237 | 1256 | 1274 | 1293 |
| 1500 | 1228 | 1247 | 1267 | 1286 | 1306 | 1326 |
| 1600 | 1256 | 1276 | 1297 | 1318 | 1338 | 1359 |
| 1700 | 1283 | 1305 | 1327 | 1348 | 1370 | 1392 |
| 1800 | 1311 | 1334 | 1357 | 1379 | 1402 | 1425 |
| 1900 | 1339 | 1363 | 1387 | 1410 | 1434 | 1458 |
| 2000 | 1367 | 1392 | 1417 | | | |
| 2100 | 1395 | 1421 | 1446 | | | |
| 2200 | 1423 | 1450 | 1476 | | | |
| 2300 | 1451 | 1479 | 1506 | | | |
| 2400 | 1479 | 1508 | 1536 | | | |
| 2500 | 1506 | 1536 | 1566 | | | |
| 2600 | 1534 | 1565 | 1596 | | | |

Options:

- grained door surface - surcharge of 16%

www.paneltech.pl



PanelTECH[®]
MODERN BUILDING