

INDUSTRIAL DOORS

- COLDROOM AND FREEZER DOORS
- GAS-TIGHT SLIDING DOORS
- SWING DOORS
- UNIVERSAL HINGED DOORS



COLDROOM AND FREEZER HINGED DOOR “DR” TYPE



APPLICATION

DR type door are applied in coldrooms and freezers within the temperature range from -25°C to $+50^{\circ}\text{C}$. The structure of the door ensures its strength and durability. High insulation value has been achieved thanks to polyurethane foam core (PUR).

DOOR LEAF

DR doors are produced in 3 versions. In DRE (ECO) and DRS (STANDARD) version door leaf is made of sandwich panel with PIR core and framed by steel channel section. In DRK (PREMIUM) version door leaf is produced on the press, by high pressure injection of PUR foam into door framework. The density of PUR core is not less than 40 kg/m^3 .

Available thicknesses:

- 60, 80 mm - coldroom door (single and double leaf)
- 100 mm, 120 mm - freezer door (single leaf)

ECO and STANDARD door leaf finish (sandwich panel):

- Galvanized steel sheet (L) thickness 0,5 mm, coated with polyester paint in white colour RAL 9010

PREMIUM door leaf finish:

- Stainless, acid-proof steel (N), type 1.4301, thickness 0,8 mm, mat surface 2B
- Galvanized steel sheet (L) thickness 0,75 mm, coated with polyester paint in white colour RAL 9010

FRAME TYPE

In DRE and DRS version door frame is filled with PUR foam. It is made of stainless, acid-proof steel (N), type 1.4301, thickness 0,8 mm, mat surface 2B or galvanized steel sheet (L) thickness 0,75 mm, coated with polyester paint in white colour (RAL 9010).

Freezer door frame and threshold are equipped in heating system (heating cable, 230 V, 40 W/rm)

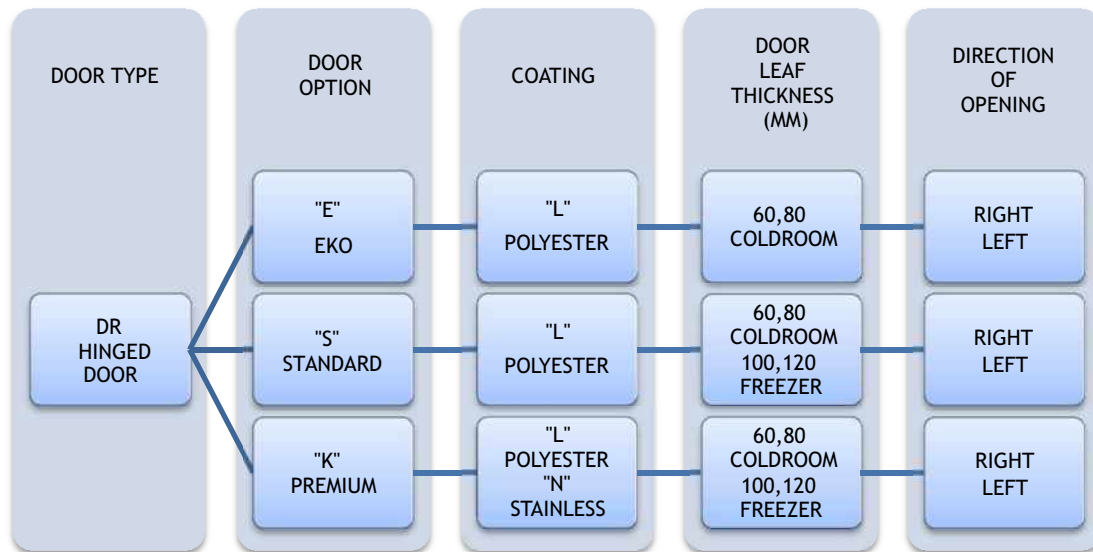
DRE version is equipped in angle bar shaped frame, which is made of galvanized steel sheet (L) thickness 0,75 mm, coated with polyester paint in white colour (RAL 9010).

HINGES

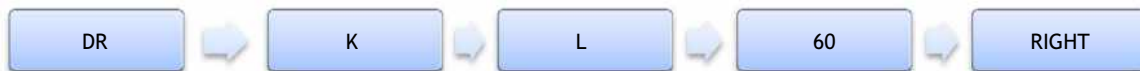
Hinges are delivered by FERMOD. Thanks to door lifting option during opening and closing the hinges prevent the lower gasket from friction.

OPTIONS

- Untypical door leaf finish:
 - Stainless, acid-proof steel (N), type 1.4301, thickness 0,8 mm, grinded surface 4B or grained surface
 - Galvanized steel sheet (L) thickness 0,75 mm, coated with polyester paint other than white RAL 9010
 - Polyester laminate PECOLIT in RAL 9016 with stainless, acid-proof door leaf framing (N), type 1.4301
- Availability to produce door with and without a threshold (lower element is installed in the floor):
- Door windows
 - Round window $\varnothing 280$ mm
 - Window in a different shape and dimension (special enquiry)
 - Execution of opening for a individual glazing
- Door adjusted to top railway system
- Flashing of the door opening



Enquiry/order example:



DRK-L 60 - coldroom hinged door, polyester paint finish, door leaf thickness 60 mm, direction of opening to the right.

HINGED DOORS ECO DRE-L 60 T>0 °C (COLDROOM)

Characteristic:

- Door leaf made of sandwich panel with PIR core 60 mm
- Door finish - galvanized steel sheet coated with polyester paint in white colour RAL 9010
- Door leaf framing - steel channel section, made of steel sheet coated with polyester paint in white colour RAL 9010
- Lock - delivered by FERMOD
- Hinges - delivered by FERMOD
- Frame - angle bar shaped, made of steel sheet coated with polyester paint in RAL 9010

DRE-L 60 SINGLE LEAF								
S \ H	1700	1800	1900	2000	2100	2200	2300	2400
700	402	408	414	420	427	433	439	446
800	404	411	417	423	430	436	442	448
900	407	413	420	426	432	439	445	451
1000	412	419	425	432	438	445	451	458
1100	417	424	431	438	444	451	458	464
1200	445	454	463	472	481	490	499	508
1300	487	498	509	521	532	543	555	566
1400	489	501	512	523	534	546	557	568
1500	492	503	515	526	537	548	560	571

DRE-L 60 DOUBLE LEAF						
S \ H	2000	2100	2200	2300	2400	2500
1400	705	717	728	739	751	762
1600	710	721	733	744	756	767
1800	715	726	738	749	760	772
2000	725	737	749	760	772	784
2200	736	748	760	772	784	796
2400	823	840	856	872	888	904
2600	911	931	952	972	993	1013

STANDARD HINGED DOOR - POLYESTER DRS-L 60 T>0 ° C (COLDROOM)

Characteristic:

- Door leaf made of sandwich panel with PIR core 60 mm
- Door finish - galvanized steel sheet coated with polyester paint in white colour RAL 9010
- Door leaf framing - steel channel section, made of steel sheet coated with polyester paint in white colour RAL 9010
- Lock - delivered by FERMOD
- Hinges - delivered by FERMOD
- Frame - complex and profiled, made of steel sheet coated with polyester paint in RAL 9010
- Lower element - channel section made of stainless, acid-proof steel sheet, type 1.4301

DRS-L 60 SINGLE LEAF									
S \ H	1700	1800	1900	2000	2100	2200	2300	2400	2500
700	511	519	526	533	541	570	599	628	658
800	525	533	541	549	557	588	620	651	682
900	540	548	557	565	574	607	640	673	706
1000	554	563	572	581	590	625	661	696	731
1100	568	578	587	597	607	644	681	718	756
1200	580	591	601	612	622	663	703	744	784
1300	595	606	617	628	639	682	724	767	809
1400	610	621	633	645	656	701	745	790	834
1500	624	637	649	661	673	720	767	813	860

DRS-L 80 DOUBLE LEAF						
S \ H	2000	2100	2200	2300	2400	2500
1400	972	985	998	1 012	1 025	1 038
1600	1 005	1 020	1 034	1 049	1 063	1 077
1800	1 039	1 055	1 070	1 086	1 101	1 117
2000	1 073	1 089	1 106	1 123	1 139	1 156
2200	1 106	1 124	1 142	1 160	1 178	1 195
2400	1 140	1 159	1 178	1 197	1 216	1 235
2600	1 174	1 194	1 214	1 234	1 254	1 274

Options:

- door leaf made of PIR sandwich panel thickness 80 mm - surcharge of 10 EUR/m²
- window, size 400 mm x 600 mm - surcharge of 110 EUR

PREMIUM HINGED DOORS - POLYESTER DRK-L 60 T>0 ° C (COLDROOM)

Characteristic:

- Door leaf thickness 60 mm, produced on the press, by high pressure injection of PUR foam into door framework
- Door finish - galvanized steel sheet coated with polyester paint in white colour RAL 9010
- Door leaf core - polyurethane foam, density of minimum 40 kg/m³
- Lock - delivered by FERMOD
- Hinges - delivered by FERMOD
- Frame - complex and profiled, made of steel sheet coated with polyester paint in RAL 9010
- Lower element - channel section made of stainless, acid-proof steel sheet, type 1.4301

DRK-L 60 SINGLE LEAF									
S \ H	1700	1800	1900	2000	2100	2200	2300	2400	2500
700	589	602	616	629	643	656	670	683	697
800	605	614	623	632	650	667	684	701	718
900	621	631	640	650	668	686	703	721	739
1000	664	668	673	678	732	740	749	758	767
1100	720	731	742	753	765	776	788	799	810
1200	724	735	747	758	769	791	800	810	819
1300	748	762	775	789	803	816	827	838	849
1400	764	778	791	804	817	830	840		
1500	780	794	808	822	836	850			

DRK-L 80 DOUBLE LEAF						
S \ H	2000	2100	2200	2300	2400	2500
1400	1068	1081	1094	1106	1119	1132
1500	1079	1097	1114	1132	1149	1167
1600	1090	1112	1134	1157	1179	1201
1700	1112	1133	1159	1184	1210	1236
1800	1134	1154	1183	1212	1241	1271
1900	1155	1175	1207	1240	1272	1305
2000	1177	1195	1231	1268	1303	1340
2100	1184	1216	1250	1285	1319	1374
2200	1191	1237	1269	1302	1335	
2300	1194	1257	1313	1319	1350	
2400	1197	1277	1357			
2500	1201	1297	1400			

Options:

- door leaf thickness 80 mm - surcharge of 20 EUR/m²
- window, size 400 mm x 600 mm - surcharge of 110 EUR
- door made in colour other than RAL 9010 - surcharge of 60 EUR/m²

PREMIUM HINGED DOORS - STAINLESS DRK-N 60 T>0 °C (COLDROOM)

Characteristic:

- Door leaf thickness 60 mm, produced on the press, by high pressure injection of PUR foam into door framework
- Door finish - stainless, acid-proof steel, type 1.4301, mat surface 2B or grinded surface 4N (option)
- Door leaf core - polyurethane foam, density of minimum 40 kg/m³
- Lock - delivered by FERMOD
- Hinges - delivered by FERMOD
- Frame - complex and profiled, made of stainless, acid-proof mat surface 2B or grinded surface 4N (option)
- Lower element - channel section made of stainless, acid-proof steel sheet, type 1.4301

DRK-N 60 SINGLE LEAF									
S \ H	1700	1800	1900	2000	2100	2200	2300	2400	2500
700	761	763	783	803	823	842	862	881	898
800	789	808	828	847	865	884	901	920	938
900	817	837	857	877	897	917	937	957	977
1000	853	877	901	925	946	966	985	1004	1024
1100	907	930	953	977	999	1023	1045	1069	1092
1200	935	965	993	1023	1052	1076	1097	1117	1138
1300	984	1013	1041	1070	1099	1127	1153	1179	1204
1400	1021	1050	1078	1107	1135	1164	1184		
1500	1058	1087	1115	1143	1171	1200			

DRK-N 80 DOUBLE LEAF						
S \ H	2000	2100	2200	2300	2400	2500
1400	1364	1405	1447	1489	1530	1572
1500	1386	1427	1469	1510	1552	1593
1600	1408	1449	1491	1532	1574	1615
1700	1453	1488	1530	1573	1616	1658
1800	1497	1527	1570	1614	1658	1701
1900	1541	1565	1610	1655	1700	1745
2000	1586	1603	1649	1695	1742	1788
2100	1630	1642	1671	1717	1763	1831
2200	1675	1680	1691	1738	1784	
2300	1697	1723	1751	1758	1805	
2400	1719	1765	1812			
2500	1741	1808	1872			

Options:

- door leaf thickness 80 mm - surcharge of 20 EUR/m²
- window, size 400 mm x 600 mm - surcharge of 110 EUR
- grained door surface - surcharge of 16%

STANDARD HINGED DOOR - POLYESTER DRS-L 100 T>-25 °C (FREEZER)

Characteristic:

- **Door leaf** made of sandwich panel with PIR core 100 mm
- **Door finish** - galvanized steel sheet coated with polyester paint in white colour RAL 9010
- **Door leaf framing** - steel channel section, made of steel sheet coated with polyester paint in white colour RAL 9010
- **Lock** - delivered by FERMOD
- **Hinges** - delivered by FERMOD
- **Frame** - complex and profiled, made of steel sheet coated with polyester paint in RAL 9010
- **Lower element** - channel section made of stainless, acid-proof steel sheet, type 1.4301

DRS-L 100 SINGLE LEAF										
S	H	1700	1800	1900	2000	2100	2200	2300	2400	2500
700		668	678	687	697	706	731	755	780	804
800		687	700	713	726	740	759	778	798	817
900		707	723	740	756	773	787	801	815	830
1000		726	740	754	769	783	802	821	840	859
1100		749	762	774	786	798	823	848	872	897
1200		757	773	789	805	820	841	863	884	905
1300		765	785	804	823	842	866	889	913	/
1400		797	817	838	858	878	896	913	/	/
1500		829	851	872	893	914	923	/	/	/

Options:

- door leaf made of PIR sandwich panel thickness 120 mm - surcharge of 10 EUR/m²
- window, size 400 mm x 600 mm - surcharge of 110 EUR

PREMIUM HINGED DOORS - POLYESTER DRK-L 100 T>-25 °C (FREEZER)

Characteristic:

- **Door leaf thickness** 100 mm, produced on the press, by high pressure injection of PUR foam into door framework
- **Door finish** - galvanized steel sheet coated with polyester paint in white colour RAL 9010
- **Door leaf core** - polyurethane foam, density of minimum 40 kg/m³
- **Lock** - delivered by FERMOD
- **Hinges** - delivered by FERMOD
- **Frame** - complex and profiled, made of steel sheet coated with polyester paint in RAL 9010
- **Lower element** - channel section made of stainless, acid-proof steel sheet, type 1.4301

DRK-L 100 SINGLE LEAF										
S	H	1700	1800	1900	2000	2100	2200	2300	2400	2500
700		755	768	781	794	807	820	833	846	859
800		778	793	807	821	835	849	863	877	891
900		802	817	832	848	863	878	893	908	923
1000		840	861	881	901	945	964	971	972	972
1100		878	895	912	928	969	970	983	1002	1022
1200		917	937	958	978	999	1017	1035	1053	1071
1300		944	964	985	1005	1025	1046	1059	1073	/
1400		971	992	1013	1033	1054	1075	1087	/	/
1500		998	1019	1040	1061	1082	1103	/	/	/

Options:

- door leaf thickness 120 mm - surcharge of 20 EUR/m²
- window, size 400 mm x 600 mm - surcharge of 110 EUR
- door made in colour other than RAL 9010 - surcharge of 60 EUR/m²

PREMIUM HINGED DOORS - STAINLESS DRK-N 100 T>-25 °C (FREEZER)

Characteristic:

- **Door leaf** thickness 100 mm, produced on the press, by high pressure injection of PUR foam into door framework
- **Door finish** - stainless, acid-proof steel, type 1.4301, mat surface 2B or grinded surface 4N (option)
- **Door leaf core** - polyurethane foam, density of minimum 40 kg/m³
- **Lock** - delivered by FERMOD
- **Hinges** - delivered by FERMOD
- **Frame** - complex and profiled, made of stainless, acid-proof mat surface 2B or grinded surface 4N (option)
- **Lower element** - channel section made of stainless, acid-proof steel sheet, type 1.4301

DRK-N 100 SINGLE LEAF										
S	H	1700	1800	1900	2000	2100	2200	2300	2400	2500
700		989	1014	1039	1064	1089	1114	1139	1164	1189
800		1027	1053	1079	1105	1132	1160	1187	1215	1242
900		1065	1093	1121	1149	1178	1207	1236	1266	1295
1000		1123	1156	1188	1220	1249	1283	1317	1351	1386
1100		1144	1172	1199	1227	1254	1298	1342	1387	1431
1200		1201	1232	1263	1294	1325	1356	1410	1465	1519
1300		1238	1271	1304	1337	1370	1402	1432	1466	/
1400		1276	1311	1345	1379	1414	1448	1507	/	/
1500		1314	1350	1386	1422	1458	1494	/	/	/

Options:

- door leaf thickness 120 mm - surcharge of 20 EUR/m²
- window, size 400 mm x 600 mm - surcharge of 110 EUR
- grained door surface - surcharge of 16%

PREMIUM HINGED FLUSH DOORS - POLYESTER DRKZ-L 80 T>0°C (COLDROOM)

Characteristic:

- Door leaf thickness 80 mm, produced on the press, by high pressure injection of PUR foam into door framework;
- Door finish - steel channel section, made of steel sheet coated with polyester paint in white colour RAL 9010
- Door leaf core - polyurethane foam, density of minimum min. 40 kg/m³
- Lock - delivered by FERMOD
- Hinges - delivered by FERMOD/RAHRBACH
- The frame flush with the external wall surface - complex and profiled, made of steel sheet coated with polyester paint in RAL 9010
- Lower element- channel section made of stainless, acid-proof steel sheet, type 1.4301

DRKZ-L 80 SINGLE LEAF									
S \ H	1700	1800	1900	2000	2100	2200	2300	2400	2500
700	724	546	574	603	631	659	688	716	744
800	743	719	735	751	767	783	799	816	832
900	765	734	744	756	776	796	817	837	857
1000	819	755	767	778	802	823	843	863	883
1100	883	803	809	816	875	886	897	908	918
1200	890	872	885	898	912	927	940	873	886
1300	842	804	816	829	841	865	875		

DRKZ-L 80 DOUBLE LEAF						
S \ H	2000	2100	2200	2300	2400	2500
1400	1293	1309	1324	1340	1356	1371
1500	1306	1328	1349	1370	1392	1413
1600	1320	1347	1374	1401	1428	1455
1700	1346	1372	1403	1434	1466	1497
1800	1373	1397	1433	1468	1503	1539
1900	1399	1422	1462	1501	1541	1581
2000	1426	1448	1491	1535	1579	1622
2100	1434	1473	1514	1556	1598	1664
2200	1442	1498	1537	1577	1616	
2300	1446	1522	1590	1598	1635	
2400	1450	1547	1643			
2500	1454	1571	1696			

Options:

- window, size 400 mm x 600 mm - surcharge of 110 EUR
- door made in colour other than RAL 9010 - surcharge of 60 EUR/m²

PREMIUM HINGED FLUSH DOORS - STAINLESS DRKZ-N 80 T>0°C (COLDROOM)

Characteristic:

- Door leaf thickness 80 mm, produced on the press, by high pressure injection of PUR foam into door framework;
- Door finish - stainless, acid-proof steel, type 1.4301, mat surface 2B or grinded surface 4N (option)
- Door leaf core - polyurethane foam, density of minimum min. 40 kg/m³
- Lock - delivered by FERMOD
- Hinges - delivered by FERMOD/RAHRBACH
- The frame flush with the external wall surface - complex and profiled, made of stainless, acid-proof mat surface 2B or grinded surface 4N (option)
- Lower element- channel section made of stainless, acid-proof steel sheet, type 1.4301

DRKZ-N 80 SINGLE LEAF									
S \ H	1700	1800	1900	2000	2100	2200	2300	2400	2500
700	951	954	979	1003	1028	1052	1077	1102	1123
800	986	1010	1035	1059	1082	1104	1127	1149	1172
900	1021	1046	1071	1096	1121	1146	1171	1196	1221
1000	1067	1097	1126	1156	1183	1207	1231	1255	1280
1100	1098	1126	1154	1182	1209	1237	1265	1293	1321
1200	1132	1167	1202	1237	1272	1302	1327	1352	1377
1300	1190	1225	1260	1295	1329	1364	1395		

DRKZ-N 80 DOUBLE LEAF						
S \ H	2000	2100	2200	2300	2400	2500
1400	1582	1630	1678	1727	1775	1824
1500	1608	1656	1704	1752	1800	1848
1600	1633	1681	1729	1777	1825	1873
1700	1685	1726	1775	1825	1874	1923
1800	1736	1771	1821	1872	1923	1974
1900	1742	1768	1819	1870	1921	1971
2000	1792	1812	1864	1916	1968	2020
2100	1842	1855	1888	1940	1992	2069
2200	1893	1899	1911	1963	2015	
2300	1917	1947	1979	1987	2039	
2400	1943	1995	2047			
2500	1968	2043	2115			

Options:

- window, size 400 mm x 600 mm - surcharge of 110 EUR
- grained door surface - surcharge of 16%

PREMIUM HINGED FLUSH DOORS - POLYESTER DRKZ-L 100 T>-25°C (FREEZER)

Characteristic:

- **Door leaf** thickness 100 mm, produced on the press, by high pressure injection of PUR foam into door framework;
- **Door finish** - steel channel section, made of steel sheet coated with polyester paint in white colour RAL 9010
- **Door leaf core** - polyurethane foam, density of minimum min. 40 kg/m³
- **Lock** - delivered by FERMOD
- **Hinges** - delivered by FERMOD/RAHRBACH
- **the frame flush with the external wall surface** - complex and profiled, made of steel sheet coated with polyester paint in RAL 9010
- **Lower element**- channel section made of stainless, acid-proof steel sheet, type 1.4301

DRKZ-L 100 SINGLE LEAF										
S	H	1700	1800	1900	2000	2100	2200	2300	2400	2500
700		888	904	919	935	950	965	981	996	1012
800		916	933	950	966	983	999	1016	1033	1049
900		944	962	980	998	1015	1033	1051	1069	1086
1000		989	1013	1037	1060	1112	1135	1143	1144	1144
1100		1034	1054	1073	1092	1141	1142	1158	1180	1203
1200		1079	1103	1128	1152	1176	1197	1218	1240	1261
1300		1111	1135	1159	1183	1207	1231	1247		

Options:

- window, size 400 mm x 600 mm - surcharge of 110 EUR
- door made in colour other than RAL 9010 - surcharge of 60 EUR/m²

PREMIUM HINGED FLUSH DOORS - STAINLESS DRKZ-N 100 T>-25°C (FREEZER)

Characteristic:

- **Door leaf** thickness 100 mm, produced on the press, by high pressure injection of PUR foam into door framework;
- **Door finish** - stainless, acid-proof steel, type 1.4301, mat surface 2B or grinded surface 4N (option)
- **Door leaf core** - polyurethane foam, density of minimum min. 40 kg/m³
- **Lock** - delivered by FERMOD
- **Hinges** - delivered by FERMOD/RAHRBACH
- **The frame flush with the external wall surface** - made of stainless, acid-proof mat surface 2B or grinded surface 4N (option)
- **Lower element** - channel section made of stainless, acid-proof steel sheet, type 1.4301

DRKZ-N 100 SINGLE LEAF										
S	H	1700	1800	1900	2000	2100	2200	2300	2400	2500
700		1157	1186	1216	1245	1274	1304	1333	1362	1391
800		1202	1232	1262	1292	1325	1357	1389	1421	1453
900		1246	1279	1311	1344	1378	1412	1446	1481	1515
1000		1314	1352	1390	1428	1461	1501	1541	1581	1621
1100		1339	1371	1403	1435	1467	1519	1571	1622	1674
1200		1405	1441	1477	1514	1550	1587	1650	1714	1777
1300		1449	1487	1525	1564	1602	1641	1675		

Options:

- door leaf thickness 120 mm - surcharge of 20 EUR/m²
- window, size 400 mm x 600 mm - surcharge of 110 EUR
- grained door surface - surcharge of 16%



COLDROOM AND FREEZER SLIDING DOORS, “DP” TYPE

APPLICATION

DP doors are applied in coldrooms and freezers within the temperature from -25°C to $+50^{\circ}\text{C}$. The structure of the door ensures its strength and durability. High insulation value has been achieved thanks to polyurethane foam core (PUR).

DPG - lightweight, up to 120 kg

DPG - heavyweight, up to 200 kg

DOOR LEAF

DP doors are available in 2 versions: In DPS (STANDARD) version door leaf is made of sandwich panel with PIR core and framed by steel channel section. In DPK (PREMIUM) version door leaf is produced on the press, by high pressure injection of PUR foam into door framework. The density of PUR core is not less than $40\text{kg}/\text{m}^3$.

Available thicknesses:

- 60, 80 mm - coldroom door
- 100, 120 mm - freezer door

STANDARD door leaf finish (sandwich panel):

- Galvanized steel sheet (L) thickness 0,5 mm, coated with polyester paint in white colour RAL 9010

PREMIUM door leaf finish:

- Stainless, acid-proof steel (N), type 1.4301, thickness 0,8 mm, mat surface 2B
- Galvanized steel sheet (L) thickness 0,75 mm, coated with polyester paint in white colour RAL 9010

Door leaf is equipped with gasket delivered by FERMOD (F).

FRAME TYPE

In both DPS and DPK version door frame is filled with PUR foam. It is made of stainless, acid-proof steel (N), type 1.4301, thickness 1,5 mm, mat surface 2B or galvanized steel sheet (L) thickness 1,5 mm, coated with polyester paint in white colour (RAL 9010).

Freezer door frame and threshold are equipped in heating system (heating cable, 230 V, 40 W/rm).

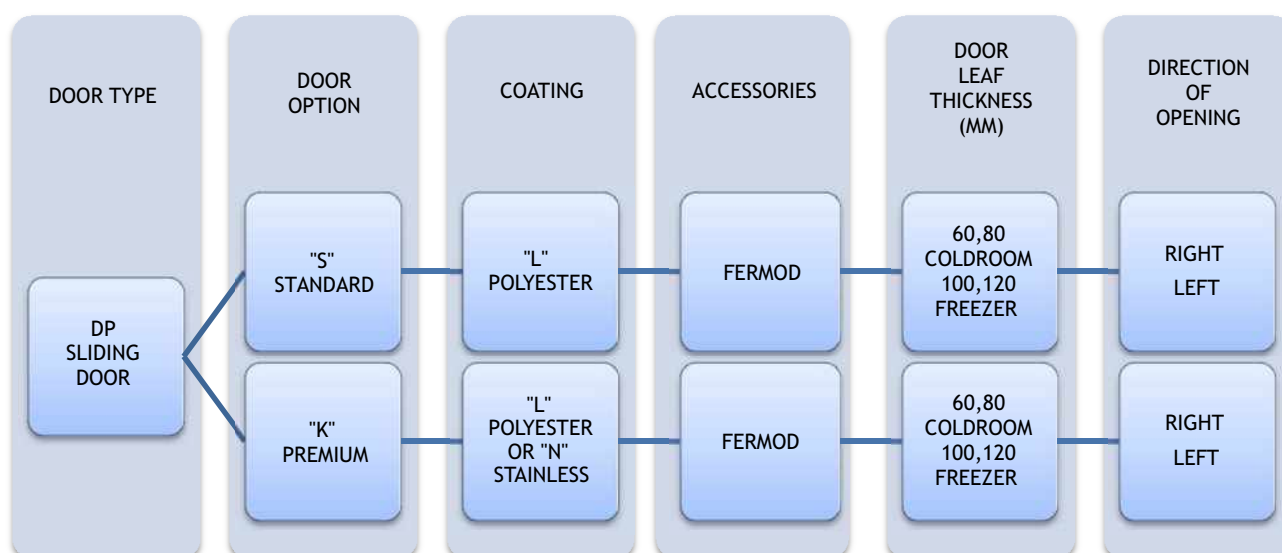
Lock is delivered by FERMOD (F). It is equipped with patent insert with possibility of emergency opening from the inside even if the door is locked.

SUSPENSION SYSTEM

- FERMOD suspension system (F), aluminium rail - lightweight type
- FERMOD suspension system (F), galvanized steel or stainless steel rail - heavyweight type

OPTIONS

- Untypical door leaf finish:
 - Stainless, acid-proof steel (N), type 1.4301, thickness 0,8 mm, grinded surface 4B or grained surface
 - Galvanized steel sheet (T) thickness 0,75 mm, coated with polyester paint other than white
 - Polyester laminate PECOLIT in RAL 9016 with stainless, acid-proof door leaf framing (N), type 1.4301
- Availability to produce door with and without a threshold (lower element is installed in the floor)
- Flashing of the door opening
- Application of automatic kits delivered by FERMOD (F)
- Door windows:
 - Round window $\varnothing 280$ mm
 - Window in a different shape (special enquiry)
- Door adjusted to top railway system



Enquiry/order example:



DPK-NF 60 - Premium coldroom sliding door, stainless steel finish, FERMOD accessories, door leaf thickness 60 mm, direction of opening to the right.

STANDARD SLIDING DOOR - POLYESTER - FERMOD ACCESSORIES - DPS-LF 60 T>0 °C (COLDROOM)

Characteristic:

- Door leaf made of sandwich panel with PIR core 60 mm
- Door finish - galvanized steel sheet, coated with polyester paint in white colour RAL 9010
- Door leaf framing - steel channel section, made of stainless, acid-proof steel sheet, type 1.4301
- Frame - complex and profiled, made of steel sheet coated with polyester paint in RAL 9010
- Accessories - delivered by FERMOD, made of aluminium
- Lower element - channel section made of stainless, acid-proof steel sheet, type 1.4301

DPS-LF 60 SINGLE LEAF								
S \ H	1800	1900	2000	2100	2200	2300	2400	2500
800	1155	1163	1172	1180	1189	1197	1206	1215
900	1171	1181	1190	1199	1209	1218	1227	1236
1000	1188	1198	1208	1218	1228	1238	1248	1258
1100	1309	1320	1330	1341	1352	1363	1374	1385
1200	1325	1337	1348	1360	1372	1383	1395	1406
1300	1358	1371	1383	1396	1408	1421	1433	1446
1400	1392	1405	1418	1432	1445	1458	1471	1484
1500	1427	1441	1455	1469	1483	1497	1511	1525
1600	1461	1476	1491	1506	1521	1536	1550	1565
1700	1614	1630	1646	1661	1677	1692	1708	1724
1800	1631	1647	1664	1680	1696	1713	1729	1745
1900	1673	1690	1707	1724	1737	1751	1764	1777
2000	1715	1733	1751	1768	1786	1804	1822	1840

S \ H	2500	2600	2700	2800	3000	3200	3400	3600	3800	4000
1500	1525	1557	1576	1595	1613	1642	1671	1700	1729	1758
1600	1565	1648	1668	1688	1708	1737	1767	1797	1828	1857
1700	1724	1739	1760	1781	1802	1833	1864	1895	1926	1957
1800	1745	1762	1784	1806	1827	1860	1893	1926	1959	1991
1900	1777	1785	1807	1830	1853	1887	1922	1956	1990	2025
2000	1840	1858	1883	1907	1932	1968	2003	2039	2075	2111
2200	1886	1910	1934	1959	1983	2022	2061	2100	2140	2536
2400	1982	2015	2049	2081	2115	2148	2181	2214	2634	2679
2600	2031	2059	2088	2116	2144	2221	2297	2735	2779	2822
2800	2189	2223	2257	2291	2325	2359	2747	2803	2859	2915
3000	2267	2300	2332	2364	2397	2812	2861	2910	2959	3009

Prices in bold refer to doors with heavy system

Options:

- door leaf made of PIR sandwich panel thickness 80 mm - surcharge of 10 EUR/m²
- window, size 400 mm x 600 mm - surcharge of 110 EUR
- lock with patent insert with possibility of opening from the inside - surcharge of 160 EUR
- handle support (lever) for light-weight door - surcharge of 160 EUR (in heavy-weight door this option is included free of charge)

STANDARD SLIDING DOOR - POLYESTER - FERMOD ACCESSORIES - DPS-LF 100 T> -25°C (FREEZER)

Characteristic:

- Door leaf made of sandwich panel with PIR core 100 mm
- Door finish - galvanized steel sheet, coated with polyester paint in white colour RAL 9010
- Door leaf framing - steel channel section, made of stainless, acid-proof steel sheet, type 1.4301
- Frame - complex and profiled, made of steel sheet coated with polyester paint in RAL 9010
- Accessories - delivered by FERMOD, made of aluminium
- Lower element - channel section made of stainless, acid-proof steel sheet, type 1.4301

DPS-LF 100 SINGLE LEAF								
S \ H	1800	1900	2000	2100	2200	2300	2400	2500
800	1301	1314	1327	1340	1351	1362	1373	1384
900	1320	1334	1347	1360	1373	1385	1397	1410
1000	1340	1353	1367	1381	1395	1408	1422	1435
1100	1470	1498	1506	1514	1529	1543	1558	1572
1200	1490	1505	1521	1536	1551	1567	1582	1598
1300	1527	1537	1546	1556	1577	1599	1620	1641
1400	1564	1581	1599	1616	1633	1650	1667	1684
1500	1601	1619	1637	1655	1673	1691	1709	1727
1600	1637	1656	1675	1694	1713	1731	1750	1769
1700	1795	1814	1834	1854	1873	1893	1913	1933
1800	1814	1835	1855	1876	1897	1917	1938	1958
1900	1860	1882	1903	1925	1946	1968	1989	2010
2000	1906	1929	1951	1973	1996	2018	2040	2063

S \ H	2500	2600	2700	2800	3000	3200	3400	3600	3800	4000
1500	1727	1762	1786	1810	1834	1870	1906	1942	1978	2014
1600	1769	1857	1882	1907	1933	1970	2008	2046	2084	2121
1700	1933	1953	1979	2005	2031	2071	2110	2150	2190	2229
1800	1958	1982	2008	2035	2061	2102	2144	2185	2226	2267
1900	2010	2005	2034	2063	2091	2134	2177	2220	2263	2306
2000	2063	2085	2115	2145	2175	2192	2209	2227	2244	2261
2200	2114	2144	2174	2204	2234	2260	2286	2312	2337	2836
2400	2217	2249	2282	2314	2346	2346	2424	2501	2933	2987
2600	2335	2370	2405	2439	2474	2529	2584	3033	3085	3138
2800	2403	2444	2485	2526	2567	2608	3044	3110	3175	3241
3000	2539	2565	2591	2643	2694	3106	3166	3225	3284	3343

Prices in bold refer to doors with heavy system

Options:

- door leaf made of PIR sandwich panel thickness 120 mm - surcharge of 10 EUR/m²
- window, size 400 mm x 600 mm - surcharge of 110 EUR
- lock with patent insert with possibility of opening from the inside - surcharge of 160 EUR
- handle support (lever) for light-weight door - surcharge of 160 EUR (in heavy-weight door this option is included free of charge)

PREMIUM SLIDING DOOR - POLYESTER - FERMOD ACCESSORIES - DPK-LF 60 T>0 °C (COLDROOM)

Characteristic:

- Door leaf thickness 60 mm, produced on the press, by high pressure injection of PUR foam into door framework
- Door finish - galvanized steel sheet coated with polyester paint in white colour RAL 9010
- Door leaf core - polyurethane foam, density of minimum 40 kg/m³
- Frame - complex and profiled, made of steel sheet coated with polyester paint in RAL 9010
- Accessories - delivered by FERMOD, made of aluminium
- Lower element - channel section made of stainless, acid-proof steel sheet, type 1.4301

DPK-LF 60 SINGLE LEAF								
S \ H	1800	1900	2000	2100	2200	2300	2400	2500
800	1251	1259	1267	1275	1283	1291	1299	1307
900	1266	1275	1284	1293	1302	1310	1319	1328
1000	1282	1292	1301	1311	1320	1330	1339	1348
1100	1331	1341	1351	1362	1372	1382	1393	1403
1200	1379	1390	1401	1413	1424	1435	1446	1458
1300	1412	1424	1435	1447	1459	1471	1482	1494
1400	1445	1450	1454	1459	1463	1486	1508	1530
1500	1478	1492	1506	1520	1534	1549	1563	1577
1600	1510	1523	1537	1551	1564	1587	1611	1625
1700	1626	1641	1657	1673	1688	1704	1719	1735
1800	1741	1756	1771	1786	1801	1816	1831	1846
1900	1781	1797	1813	1828	1844	1859	1875	1890
2000	1821	1840	1860	1878	1897	1916	1935	2062

S \ H	2500	2600	2700	2800	3000
1500	1577	1592	1637	1682	1728
1600	1625	1672	1687	1719	1750
1700	1735	1832	1866	1923	2400
1800	1846	1913	1980	2407	2417
1900	1890	2342	2396	2425	2453
2000	2062	2402	2450	2487	2524
2200	2420	2461	2503	2549	2596
2400	2709	2779	2847	2855	2862

Prices in bold refer to doors with heavy system

Options:

- door leaf thickness 80 mm - surcharge of 20 EUR/m²
- window, size 400 mm x 600 mm - surcharge of 110 EUR
- lock with patent insert with possibility of opening from the inside - surcharge of 160 EUR
- door made in colour other than RAL 9010 - surcharge of 60 EUR/m²
- handle support (lever) for light-weight door - surcharge of 160 EUR (in heavy-weight door this option is included free of charge)

PREMIUM SLIDING DOOR - POLYESTER - FERMOD ACCESSORIES - DPK-LF 100 T>-25°C (FREEZER)

Characteristic:

- Door leaf thickness 100 mm, produced on the press, by high pressure injection of PUR foam into door framework
- Door finish - galvanized steel sheet coated with polyester paint in white colour RAL 9010
- Door leaf core - polyurethane foam, density of minimum 40 kg/m³
- Frame - complex and profiled, made of steel sheet coated with polyester paint in RAL 9010
- Accessories - delivered by FERMOD, made of aluminium
- Lower element - channel section made of stainless, acid-proof steel sheet, type 1.4301

DPK-LF 100 SINGLE LEAF								
S \ H	1800	1900	2000	2100	2200	2300	2400	2500
800	1478	1490	1502	1515	1527	1540	1553	1565
900	1517	1530	1543	1557	1570	1583	1597	1610
1000	1556	1570	1584	1599	1613	1627	1641	1655
1100	1575	1590	1605	1620	1634	1649	1664	1679
1200	1594	1609	1625	1640	1656	1672	1687	1703
1300	1686	1704	1722	1740	1758	1776	1794	1812
1400	1777	1798	1819	1839	1860	1880	1901	1922
1500	1804	1825	1846	1866	1887	1907	1928	1948
1600	1831	1852	1873	1893	1914	1934	1955	1975
1700	1859	1879	1900	1920	1940	1961	1981	2002
1800	1938	1959	1979	2000	2021	2041	2062	2083
1900	1984	2007	2030	2053	2075	2098	2121	2144
2000	2030	2048	2065	2100	2135	2170	2205	2332

S \ H	2500	2600	2700	2800	3000
1500	1921	1930	1939	1948	1992
1600	1953	1954	1956	1980	2005
1700	2002	2034	2067	2073	2737
1800	2083	2112	2141	2778	2788
1900	2144	2726	2758	2790	2822
2000	2332	2833	2867	2902	2936
2200	2903	2940	2977	3013	3050
2400	3167	3207	3248	3290	3331

Prices in bold refer to doors with heavy system

Options:

- door leaf thickness 120 mm - surcharge of 20 EUR/m²
- window, size 400 mm x 600 mm - surcharge of 110 EUR
- lock with patent insert with possibility of opening from the inside - surcharge of 160 EUR
- door made in colour other than RAL 9010 - surcharge of 60 EUR/m²
- handle support (lever) for light-weight door - surcharge of 160 EUR (in heavy-weight door this option is included free of charge)

PREMIUM SLIDING DOOR - STAINLESS - FERMOD ACCESSORIES - DPK-NF 60 T>0 °C (COLDROOM)

Characteristic:

- **Door leaf thickness** 60 mm, produced on the press, by high pressure injection of PUR foam into door framework
- **Door finish** - stainless, acid-proof steel, type 1.4301, mat surface 2B or grinded surface 4N (option)
- **Door leaf core** - polyurethane foam, density of minimum 40 kg/m³
- **Frame** - complex and profiled, made of stainless, acid-proof steel, type 1.4301, mat surface 2B or grinded surface 4N (option)
- **Accessories** - delivered by FERMOD, made of aluminium
- **Lower element** - channel section made of stainless, acid-proof steel sheet, type 1.4301

DPK-NF 60 SINGLE LEAF								
S \ H	1800	1900	2000	2100	2200	2300	2400	2500
800	1436	1452	1469	1485	1502	1518	1534	1551
900	1464	1482	1499	1517	1535	1552	1570	1588
1000	1492	1521	1550	1565	1580	1594	1609	1624
1100	1549	1569	1589	1609	1629	1649	1669	1690
1200	1605	1627	1648	1669	1691	1712	1733	1755
1300	1653	1676	1698	1721	1744	1766	1789	1811
1400	1701	1725	1749	1773	1796	1820	1844	1868
1500	1756	1781	1806	1831	1856	1881	1906	1931
1600	1810	1832	1853	1874	1895	1932	1968	1994
1700	1928	1956	1983	2011	2038	2066	2093	2121
1800	2046	2075	2103	2132	2161	2190	2219	2247
1900	2098	2128	2158	2188	2218	2248	2278	2308
2000	2151	2187	2223	2260	2296	2333	2369	2496

S \ H	2500	2600	2700	2800	3000
1500	1931	1945	2015	2085	2154
1600	1994	2042	2089	2137	2184
1700	2121	2183	2244	2275	2578
1800	2247	2276	2305	2602	2625
1900	2308	2650	2695	2728	2717
2000	2496	2749	2806	2854	2902
2200	2778	2804	2917	2947	3088
2400	3130	3236	3342	3356	3369

Prices in bold refer to doors with heavy system

Options:

- door leaf thickness 80 mm - surcharge of 20 EUR/m²
- window, size 400 mm x 600 mm - surcharge of 110 EUR
- lock with patent insert with possibility of opening from the inside - surcharge of 175 EUR
- grained door surface - surcharge of 10%
- handle support (lever) for light-weight door - surcharge of 160 EUR (in heavy-weight door this option is included free of charge)

PREMIUM SLIDING DOOR - STAINLESS - FERMOD ACCESSORIES - DPK-NF 100 T>-25 °C (FREEZER)

Characteristic:

- Door leaf thickness 100 mm, produced on the press, by high pressure injection of PUR foam into door framework
- Door finish - stainless, acid-proof steel, type 1.4301, mat surface 2B or grinded surface 4N (option)
- Door leaf core - polyurethane foam, density of minimum 40 kg/m³
- Heated frame - complex and profiled, made of stainless, acid-proof steel, type 1.4301, mat surface 2B or grinded surface 4N (option)
- Accessories - delivered by FERMOD, made of aluminium
- Lower element - channel section made of stainless, acid-proof steel sheet, type 1.4301

DPK-NF 100 SINGLE LEAF								
S \ H	1800	1900	2000	2100	2200	2300	2400	2500
800	1666	1688	1709	1731	1752	1774	1795	1817
900	1718	1741	1764	1787	1809	1832	1855	1878
1000	1769	1794	1818	1842	1867	1891	1915	1940
1100	1805	1831	1856	1882	1908	1933	1959	1985
1200	1840	1867	1895	1922	1949	1976	2003	2030
1300	1928	1958	1987	2017	2047	2076	2106	2136
1400	2016	2048	2080	2112	2144	2176	2209	2241
1500	2041	2072	2104	2135	2166	2197	2228	2259
1600	2066	2099	2132	2165	2197	2230	2263	2295
1700	2166	2200	2234	2268	2302	2336	2370	2404
1800	2265	2301	2336	2372	2407	2442	2478	2513
1900	2325	2361	2399	2435	2472	2509	2546	2583
2000	2384	2429	2474	2518	2563	2607	2652	2778

S \ H	2500	2600	2700	2800	3000
1500	2259	2281	2350	2418	2486
1600	2295	2369	2428	2443	2459
1700	2404	2457	2506	2545	3317
1800	2513	2545	2584	3286	3330
1900	2583	3202	3253	3304	3356
2000	2778	3344	3399	3454	3509
2200	3427	3486	3545	3604	3662
2400	3753	3819	3885	3950	4016

Prices in bold refer to doors with heavy system

Options:

- door leaf thickness 120 mm - surcharge of 20 EUR/m²
- window, size 400 mm x 600 mm - surcharge of 110 EUR
- lock with patent insert with possibility of opening from the inside - surcharge of 175 EUR
- grained door surface - surcharge of 10%
- handle support (lever) for light-weight door - surcharge of 160 EUR (in heavy-weight door this option is included free of charge)



GAS-TIGHT SLIDING DOORS, “DPG” TYPE

APPLICATION

DPG doors are applied in rooms with controlled atmosphere (KA), which is the best technology to store fruits and vegetables. In standard coldrooms fruits are stored in normal atmosphere containing 21% of oxygen and 0% carbon dioxide. In controlled atmosphere the content of oxygen is below 3% and the content of carbon dioxide is below 5%. This leads to prolongation of fruits and vegetables store period without losing their quality.

DPG - lightweight, up to 120 kg

DPG - heavyweight, up to 200 kg

DOOR LEAF

DP doors are available in 2 versions: In DSPG (STANDARD) version door leaf is made of sandwich panel with PIR core and framed by steel channel section. In DPKG (PREMIUM) version door leaf is produced on the press, by high pressure injection of PUR foam into door framework. The density of PUR core is not less than 40 kg/m^3 .

Available thicknesses:

- 80 mm

STANDARD door leaf finish (sandwich panel):

- Galvanized steel sheet (L) thickness 0,5 mm, coated with polyester paint in white colour RAL 9010

PREMIUM door leaf finish:

- Stainless, acid-proof steel (N), type 1.4301, thickness 0,8 mm, mat surface 2B
- Galvanized steel sheet (L) thickness 0,75 mm, coated with polyester paint in white colour RAL 9010

Door leaf is equipped with gasket delivered by FERMOD (F), eccentric ball valves one for gas filling of the room, the other in order to take samples from the room atmosphere clamps to ensure door leaf tightness, revision window 528 x 828 mm, closed with a key.

FRAME TYPE

In both DSPG and DPKG version door frame is filled with PUR foam. It is made of stainless, acid-proof steel (N), type 1.4301, thickness 0,8 mm, mat surface 2B or galvanized steel sheet (T) thickness 0,75 mm, coated with polyester paint in white colour (RAL 9010).

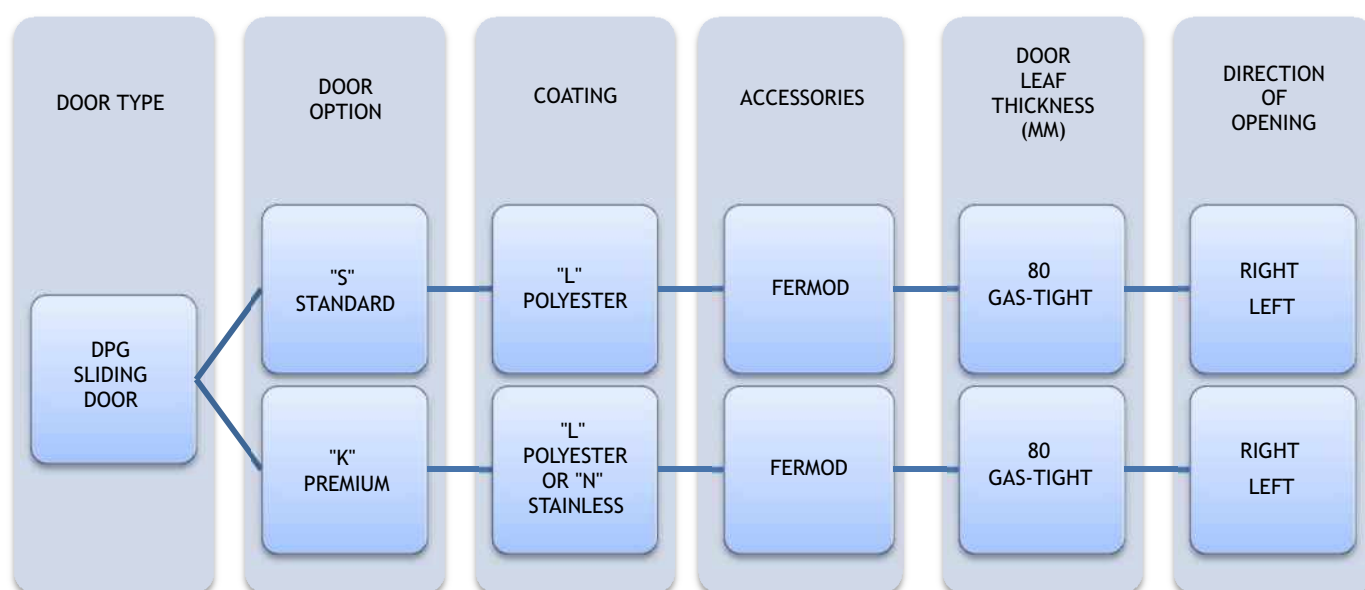
Lock is delivered by RAHRBACH. It is equipped with patent insert with possibility of emergency opening from the inside even if the door is locked.

SUSPENSION SYSTEM

FERMOD suspension system (F), aluminium rail - lightweight type
 FERMOD suspension system (F), galvanized steel or stainless steel rail - heavyweight type

OPTIONS

- Untypical door leaf finish:
 - Stainless, acid-proof steel (N), type 1.4301, thickness 0,8 mm, grinded surface 4B or grained surface
 - Galvanized steel sheet (L) coated with polyester paint other than white (RAL 9010)
- Availability to produce door with and without a threshold (lower element is installed in the floor)
- Flashing of the door opening



Enquiry/order example:



DPKG-NF 80 - Premium gas-tight coldroom sliding door, stainless steel finish, FERMOD accessories, door leaf thickness 80 mm, direction of opening to the right.

STANDARD SLIDING DOOR - POLYESTER - FERMOD ACCESSORIES - DPSG-LF 80 T>0 °C (GAS-TIGHT)

Characteristic:

- Door leaf made of sandwich panel with PIR core 80 mm
- Door finish - galvanized steel sheet coated with polyester paint in white colour RAL 9010
- Door leaf framing - steel channel section, made of stainless, acid-proof steel sheet, type 1.4301
- Frame - complex and profiled, made of steel sheet coated with polyester paint in RAL 9010
- Accessories - delivered by FERMOD, made of aluminium
- Lower element - channel section made of stainless, acid-proof steel sheet, type 1.4301
- Eccentric ball valves - one for gas filling of the room, the other in order to take samples from the room atmosphere
- clamps - ensure door leaf tightness
- revision window - dimension of 528 x 828 mm

DPSG-LF 80 SINGLE LEAF								
S \ H	1800	1900	2000	2100	2200	2300	2400	2500
800	2060	2068	2076	2085	2093	2101	2109	2118
900	2076	2085	2094	2103	2112	2121	2130	2139
1000	2092	2102	2112	2121	2131	2141	2151	2161
1100	2210	2220	2231	2241	2252	2262	2273	2283
1200	2225	2237	2248	2259	2271	2282	2293	2305
1300	2258	2270	2282	2294	2306	2319	2330	2343
1400	2291	2303	2316	2329	2342	2355	2368	2381
1500	2324	2338	2352	2365	2379	2392	2406	2420
1600	2358	2373	2387	2401	2416	2430	2445	2459
1700	2507	2522	2537	2553	2568	2583	2598	2613
1800	2523	2539	2555	2571	2587	2603	2619	2634
1900	2564	2580	2597	2614	2626	2639	2652	2665
2000	2604	2622	2639	2657	2674	2692	2709	2727

S \ H	2500	2600	2700	2800	3000	3200	3400	3600	3800	4000
1500	2420	2451	2469	2488	2506	2534	2562	2590	2618	2646
1600	2459	2540	2559	2578	2597	2626	2656	2685	2714	2743
1700	2613	2628	2649	2669	2689	2719	2750	2780	2810	2841
1800	2634	2650	2672	2693	2714	2746	2778	2810	2842	2873
1900	2665	2672	2695	2717	2739	2773	2806	2839	2873	2906
2000	2727	2744	2768	2792	2815	2851	2885	2920	2955	2990
2200	2771	2795	2818	2842	2866	2904	2942	2980	3018	3455
2400	2864	2897	2929	2961	2994	3026	3058	3090	3554	3598
2600	2912	2940	2967	2995	3023	3097	3171	3654	3698	3741
2800	3066	3099	3132	3165	3198	3231	3667	3722	3778	3834
3000	3142	3173	3205	3236	3268	3731	3780	3829	3878	3928

Prices in bold refer to doors with heavy system

Options:

- lock with patent insert with possibility of opening from the inside - surcharge of 175 EUR
- handle support (lever) for light-weight door - surcharge of 160 EUR (in heavy-weight door this option is included free of charge)

PREMIUM SLIDING DOOR - POLYESTER - FERMOD ACCESSORIES - DPKG-LF 80 T>0 °C (GAS-TIGHT)

Characteristic:

- Door leaf thickness 80 mm, produced on the press, by high pressure injection of PUR foam into door framework
- Door finish - galvanized steel sheet coated with polyester paint in white colour RAL 9010
- Door leaf core - polyurethane foam, density of minimum 40 kg/m³
- Frame - complex and profiled, made of steel sheet coated with polyester paint in RAL 9010
- Accessories - delivered by FERMOD, made of aluminium
- Lower element - channel section made of stainless, acid-proof steel sheet, type 1.4301
- Eccentric ball valves - one for gas filling of the room, the other in order to take samples from the room atmosphere
- clamps - ensure door leaf tightness
- revision window - dimension of 528 x 828 mm

DPKG-LF 80 SINGLE LEAF								
S \ H	1800	1900	2000	2100	2200	2300	2400	2500
800	2236	2244	2253	2261	2270	2278	2287	2295
900	2252	2262	2271	2280	2289	2298	2308	2317
1000	2269	2279	2289	2299	2309	2319	2328	2338
1100	2320	2331	2341	2352	2363	2374	2385	2396
1200	2370	2383	2394	2406	2418	2430	2441	2453
1300	2406	2418	2430	2442	2455	2467	2479	2491
1400	2440	2452	2464	2476	2488	2502	2516	2530
1500	2474	2489	2504	2520	2534	2549	2564	2579
1600	2509	2492	2537	2551	2565	2590	2615	2629
1700	2630	2647	2663	2680	2696	2712	2729	2745
1800	2752	2768	2783	2799	2815	2830	2846	2862
1900	2794	2811	2827	2843	2860	2876	2892	2909
2000	2836	2856	2876	2896	2916	2936	2956	3090

S \ H	2500	2600	2700	2800	3000
1500	2579	2594	2642	2690	2738
1600	2629	2673	2702	2732	2761
1700	2745	2847	2883	2943	3445
1800	2862	2933	3003	3453	3464
1900	2909	3385	3441	3471	3501
2000	3090	3447	3498	3537	3576
2200	3466	3510	3554	3603	3651
2400	3628	3698	3766	3774	3781

Prices in bold refer to doors with heavy system

Options:

- lock with patent insert with possibility of opening from the inside - surcharge of 175 EUR
- door made in colour other than RAL 9010 - surcharge of 60 EUR/m²
- handle support (lever) for light-weight door - surcharge of 160 EUR (in heavy-weight door this option is included free of charge)

PREMIUM SLIDING DOOR - STAINLESS - FERMOD ACCESSORIES - DPKG-NF 80 T>0 °C (GAS-TIGHT)

Characteristic:

- Door leaf thickness 80 mm, produced on the press, by high pressure injection of PUR foam into door framework
- Door finish -stainless, acid-proof steel, type 1.4301, mat surface 2B or grinded surface 4N (option)
- Door leaf core - polyurethane foam, density of minimum 40 kg/m³
- Heated frame - complex and profiled, made of stainless, acid-proof steel, type 1.4301, mat surface 2B or grinded surface 4N (option)
- Accessories - delivered by FERMOD, made of aluminium
- Lower element - channel section made of stainless, acid-proof steel sheet, type 1.4301
- Eccentric ball valves - one for gas filling of the room, the other in order to take samples from the room atmosphere
- clamps - ensure door leaf tightness
- revision window - dimension of 528 x 828 mm

DPKG-NF 80 SINGLE LEAF								
S \ H	1800	1900	2000	2100	2200	2300	2400	2500
800	2431	2448	2465	2482	2500	2517	2534	2552
900	2460	2479	2497	2516	2535	2553	2572	2590
1000	2489	2520	2551	2567	2582	2598	2613	2629
1100	2549	2570	2592	2613	2634	2655	2676	2698
1200	2609	2631	2654	2676	2699	2721	2744	2767
1300	2659	2683	2707	2731	2754	2778	2802	2826
1400	2710	2735	2760	2785	2810	2835	2860	2885
1500	2768	2794	2820	2846	2873	2899	2926	2952
1600	2825	2847	2870	2892	2914	2952	2991	3018
1700	2949	2978	3007	3036	3065	3094	3122	3152
1800	3073	3103	3133	3164	3194	3224	3254	3285
1900	3128	3159	3191	3222	3254	3286	3317	3349
2000	3183	3221	3259	3298	3336	3375	3413	3547

S \ H	2500	2600	2700	2800	3000
1500	2952	2997	3061	3126	3191
1600	3018	3068	3118	3168	3218
1700	3152	3217	3282	3314	3769
1800	3285	3315	3345	3795	3820
1900	3349	3848	3898	3934	3922
2000	3547	3957	4020	4074	4127
2200	3989	4018	4143	4176	4332
2400	4205	4317	4428	4239	4457

Prices in bold refer to doors with heavy system

Options:

- lock with patent insert with possibility of opening from the inside - surcharge of 175 EUR
- grained door surface - surcharge of 10%
- handle support (lever) for light-weight door - surcharge of 160 EUR (in heavy-weight door this option is included free of charge)

UNIVERSAL HINGED DOORS, “DRU” TYPE



APPLICATION

DRU are multifunctional hinged doors which can be applied in different conditions and locations, such as industrial objects, production facilities store houses, etc. The structure of the door ensures its strength and durability. High insulation value has been achieved thanks to polyurethane foam core (PUR).

DOOR LEAF

Door leaf is produced on the press, by high pressure injection of PUR foam into door framework. The density of PUR core is not less than 40 kg/m^3 .

Available thickness

- 50mm - single or double-leaf

Door leaf finish

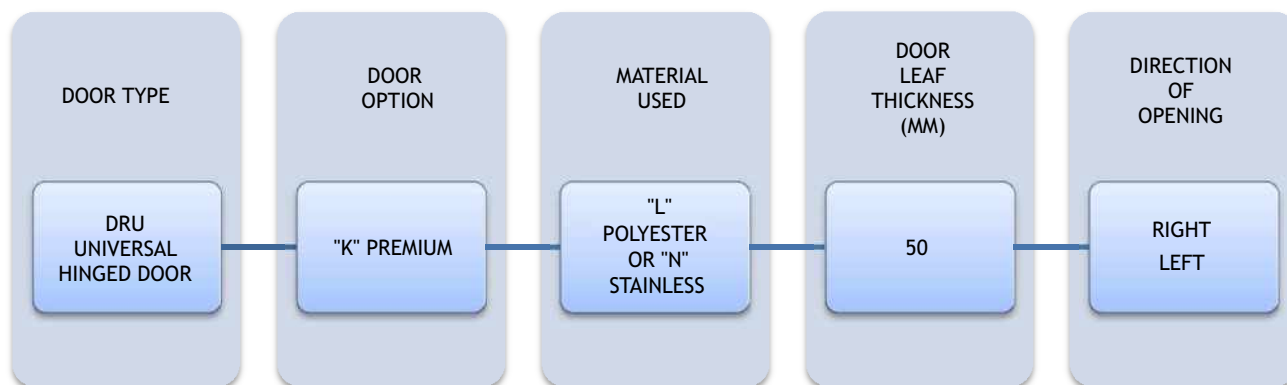
- stainless, stainless, acid-proof steel (N), type 1.4301, thickness 0,8 mm, mat surface 2B
- galvanized steel sheet 0,75 mm coated with polyester paint in white colour RAL 9010

ACCESSORIES

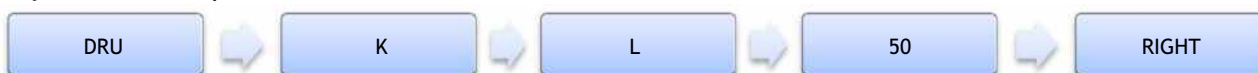
- lock with patent insert
- handle or knob made of stainless, acid-proof steel, type 1.4301
- hinges made of stainless, acid-proof steel, type 1.4301
- bolt in double-leaf door

OPTIONS

- Untypical door leaf finish:
 - Stainless, acid-proof steel (N), type 1.4301, thickness 0,8 mm, grinded surface 4B or grained surface
 - Galvanized steel sheet (T) thickness 0,75 mm, coated with polyester paint other than white
 - Polyester laminate PECOLIT in RAL 9016 with stainless, acid-proof door leaf framing (N), type 1.4301
- Availability to produce door with and without a threshold (lower element is installed in the floor)
- Door pump
- Electric hook
- Door windows:
 - Round window ø280 mm
 - Window in a different shape (special enquiry)
 - Execution of opening for a individual glazing
- Ventilation bar:
 - Dimension 455 x 135 mm
 - Other dimension and shape - individual enquiry
- Flashing of the door opening



Enquiry/order example:



DRU-L - Universal hinged door, polyester paint finish, door leaf thickness 50 mm, direction of opening to the right.

UNIVERSAL HINGED DOORS, STAINLESS

DRU-N T>0 °C

Characteristic:

- **Door leaf** thickness 50 mm, produced on the press, by high pressure injection of PUR foam into door framework
- **Door finish** - stainless, acid-proof steel, type 1.4301, mat surface 2B or grinded surface 4N (option)
- **Door leaf core** - polyurethane foam, density of minimum 40 kg/m³
- **Door closing** - lock with patent insert + stainless, acid-proof handle
- **Hinges** - stainless, acid-proof, type 1.4301
- **Frame** - complex and profiled, made of stainless, acid-proof steel, type 1.4301, mat surface 2B or grinded surface 4N (option)

DRU-N 50 SINGLE LEAF			
S \ H	2000	2100	2200
800	686	704	722
900	732	749	767
1000	760	777	794
1100	785	831	877
1200	846	861	919
1300	873	892	933
1400	901	922	947
1500	929	953	954

DRU-N 50 DOUBLE LEAF							
S \ H	2000	2100	2200	2300	2400	2500	2600
1200	1144	1184	1223	1248	1273	1298	1323
1300	1174	1215	1255	1282	1308	1334	1360
1400	1203	1246	1288	1315	1343	1370	1398
1500	1233	1276	1320	1349	1377	1406	1435
1600	1263	1307	1352	1382	1412	1442	1472
1700	1292	1338	1384	1415	1446	1478	1509
1800	1322	1369	1416	1449	1481	1514	1546
1900	1402	1442	1482	1516	1549	1583	1617
2000	1482	1515	1548	1583	1618	1653	1688
2100	1512	1550	1588	1624	1660	1696	1745
2200	1542	1585	1628	1666	1703	1741	1802
2300	1572	1620	1668	1707	1746	1784	1839
2400	1603	1655	1709	1749	1789	1829	1877
2500	1633	1691	1749	1790	1831	1873	1914

Grained door surface - surcharge of 16%

Options:

- grained door surface - surcharge of 16%

UNIVERSAL HINGEND DOORS, POLYESTER DRU-L T>0 °C

Characteristic:

- **Door leaf** thickness 50 mm, produced on the press, by high pressure injection of PUR foam into door framework
- **Door finish** - galvanized steel sheet coated with polyester paint in white colour RAL 9010
- **Door leaf core** - polyurethane foam, density of minimum 40 kg/m³
- **Door closing** - lock with patent insert + stainless, acid-proof handle
- **Hinges** - stainless, acid-proof, type 1.4301
- **Frame** - complex and profiled, made of stainless, acid-proof steel, type 1.4301, mat surface 2B or grinded surface 4N (option)

DRU-L 50 SINGLE LEAF			
S \ H	2000	2100	2200
800	528	537	546
900	530	538	546
1000	544	567	590
1100	571	607	643
1200	612	622	656
1300	627	638	670
1400	643	654	684
1500	658	670	691

DRU-L 50 DOUBLE LEAF								
S \ H	2000	2100	2200	2300	2400	2500	2600	
1200	901	914	926	939	952	979	1007	
1300	916	929	943	956	970	998	1026	
1400	931	945	959	973	987	1017	1046	
1500	946	961	976	990	1005	1035	1065	
1600	962	977	992	1007	1023	1053	1083	
1700	977	993	1009	1025	1041	1071	1102	
1800	992	1009	1025	1042	1058	1090	1122	
1900	1042	1067	1092	1100	1109	1142	1176	
2000	1056	1089	1122	1122	1123	1158	1193	
2100	1109	1126	1179	1183	1188	1222	1268	
2200	1133	1156	1205	1213	1222	1253	1309	
2300	1156	1187	1230	1243	1256	1284	1328	
2400	1179	1217	1256	1273	1290	1315	1348	
2500	1202	1242	1281	1303	1324	1346	1367	

Options:

- door made in colour other than RAL 9010 - surcharge of 60 EUR/m²

SWING DOORS, “DW” TYPE



APPLICATION

DW doors are great solution for industrial gateways with high number of passages (production facilities, supermarkets, restaurants, shops, etc.). The structure of the door ensures its strength and durability. High insulation value has been achieved thanks to polyurethane foam core (PUR).

DOOR LEAF

Door leaf is produced on the press, by high pressure injection of PUR foam into door framework. The density of PUR core is not less than 40 kg/m^3 .

DOOR LEAF FINISH

- Stainless, stainless, acid-proof steel (N), type 1.4301, thickness 0,8 mm, mat surface 2B
- Galvanized steel sheet 0,75 mm coated with polyester paint in white colour RAL 9010

Swing doors are equipped with round stainless, acid-proof window, diameter of $\varnothing 280 \text{ mm}$ (standard).

Swing doors can be produced in single or double-leaf option.

FRAME

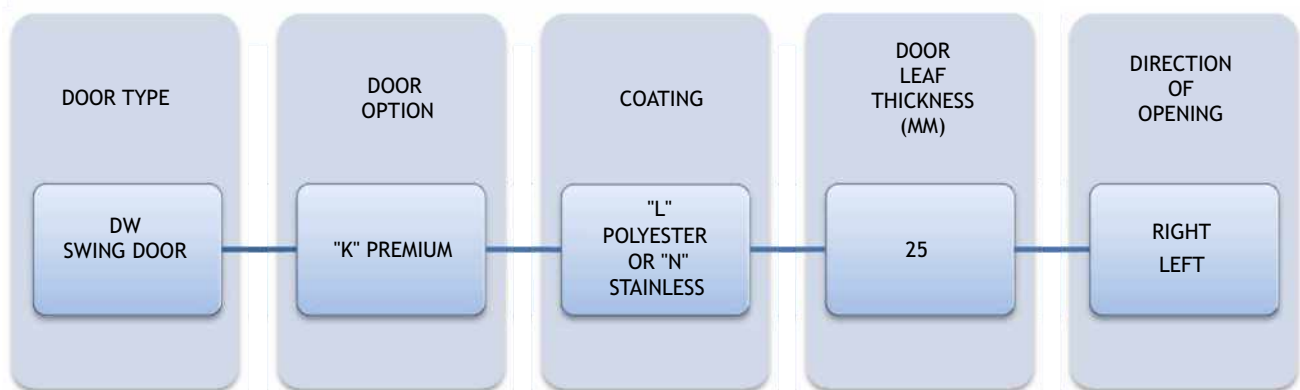
Swing doors DW installed to sandwich panel are equipped in frame in the shape of channel section, in case the DW doors are installed to brick wall are equipped in installation profile. Both channel section and installation profile are made of made of stainless, acid-proof steel, type 1.4301 or galvanized steel sheet coated with polyester paint in white colour RAL 9010.

HINGES

Hinges are delivered by FERMOD and are made of stainless, acid-proof steel or PVC with “STOP” function.

OPTION

- Untypical door leaf finish:
 - Stainless, acid-proof steel (N), type 1.4301, thickness 0,8 mm, grinded surface 4B or grained surface
 - Galvanized steel sheet (T) thickness 0,75 mm, coated with polyester paint other than white
 - Polyester laminate PECOLIT in RAL 9016 with stainless, acid-proof door leaf framing (N), type 1.4301
- Door windows:
 - Window in a different shape (special enquiry)
 - Execution of opening for a individual glazing
- Flashing of the door opening
- Execution in composite material PE 500



Enquiry/order example:



DW-L - swing door, polyester paint finish, door leaf thickness 25 mm, direction of opening to the right.

SWING DOORS, POLYESTER DW-L T>0 °C

Characteristic:

- **Door leaf** thickness 25 mm, produced on the press, by high pressure injection of PUR foam into door framework
- **Door finish** - galvanized steel sheet coated with polyester paint in white colour RAL 9010
- **Door leaf core** - polyurethane foam, density of minimum 40 kg/m³
- **Hinges** - stainless, acid-proof, type 1.4301
- **Window** - round shape, stainless, acid-proof, type 1.4301
- **Buffers** preventing against damages

DW-L SINGLE LEAF						
S \ H	2000	2100	2200	2300	2400	2500
700	902	910	917	925	932	939
800	918	926	934	942	950	958
900	933	942	951	960	968	978
1000	949	958	968	/	/	/
1100	964	974	985	/	/	/
1200	980	991	1002	/	/	/
1300	995	1007	1019	/	/	/

DW-L DOUBLE LEAF						
S \ H	2000	2100	2200	2300	2400	2500
1200	1520	1533	1546	1559	1572	1585
1300	1546	1560	1574	1588	1601	1615
1400	1572	1587	1601	1616	1631	1646
1500	1598	1614	1629	1645	1660	1675
1600	1624	1640	1657	1673	1689	1706
1700	1650	1667	1684	1701	1719	1736
1800	1676	1694	1712	1730	1748	1766
1900	1702	1721	1739	1758	1777	1796
2000	1728	1748	1767	/	/	/
2100	1754	1774	1795	/	/	/
2200	1779	1801	1822	/	/	/
2300	1805	1828	1850	/	/	/
2400	1832	1855	1878	/	/	/
2500	1858	1881	1905	/	/	/
2600	1884	1908	1933	/	/	/

Options:

- door made in colour other than RAL 9010 - surcharge of 60 EUR/m²

SWING DOORS, STAINLESS DW-N T>0 °C

Characteristic:

- **Door leaf** thickness 25 mm, produced on the press, by high pressure injection of PUR foam into door framework
- **Door finish** - stainless, acid-proof steel, type 1.4301, mat surface 2B or grinded surface 4N (option)
- **Door leaf core** - polyurethane foam, density of minimum 40 kg/m³
- **Hinges** - stainless, acid-proof, type 1.4301
- **Window** - round shape, stainless, acid-proof, type 1.4301
- **Buffers** preventing against damages

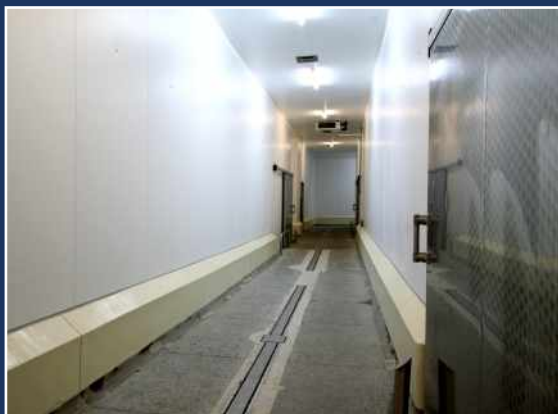
DW-N SINGLE LEAF						
S \ H	2000	2100	2200	2300	2400	2500
700	972	987	1002	1016	1031	1046
800	1002	1019	1035	1051	1067	1083
900	1033	1051	1068	1086	1103	1121
1000	1063	1083	1101			
1100	1094	1114	1135			
1200	1124	1146	1168			
1300	1155	1178	1201			

DW-N DOUBLE LEAF						
S \ H	2000	2100	2200	2300	2400	2500
1200	1628	1652	1675	1699	1722	1746
1300	1668	1693	1718	1743	1767	1793
1400	1708	1734	1760	1787	1813	1840
1500	1747	1775	1803	1831	1859	1887
1600	1787	1816	1845	1875	1904	1934
1700	1826	1857	1888	1919	1950	1981
1800	1866	1898	1931	1963	1995	2028
1900	1906	1939	1973	2007	2041	2075
2000	1945	1981	2016			
2100	1985	2022	2058			
2200	2025	2063	2101			
2300	2065	2104	2144			
2400	2104	2145	2186			
2500	2144	2186	2229			
2600	2183	2227	2272			

Options:

- grained door surface - surcharge of 16%

www.paneltech.pl



PANELTECH[®]