

## INDUSTRIAL DOORS

- COLDROOM AND FREEZER DOORS
- GAS-TIGHT SLIDING DOORS
- SWING DOORS
- UNIVERSAL HINGED DOORS





# COLDROOM AND FREEZER HINGED DOOR “DR” TYPE



## APPLICATION

DR type door are applied in coldrooms and freezers within the temperature range from  $-40^{\circ}\text{C}$  to  $+50^{\circ}\text{C}$ . The structure of the door ensures its strength and durability. High insulation value has been achieved thanks to polyurethane foam core (PUR).

## DOOR LEAF

DR doors are produced in 3 versions. In DRE (ECO) and DRS (STANDARD) version door leaf is made of sandwich panel with PIR core and framed by steel channel section. In DRK (PREMIUM) version door leaf is produced on the press, by high pressure injection of PUR foam into door framework. The density of PUR core is not less than  $40 \text{ kg/m}^3$ .

### Available thicknesses:

- 60, 80 mm - coldroom door (single and double leaf)
- 100 mm, 120 mm, 150mm, 160mm - freezer door (single and double leaf)

### ECO and STANDARD door leaf finish (sandwich panel):

- Galvanized steel sheet (L) thickness 0,5 mm, coated with polyester paint in white colour RAL 9010

### PREMIUM door leaf finish:

- Stainless, acid-proof steel (N), type 1.4301, thickness 0,8 mm, mat surface 2B
- Galvanized steel sheet (L) thickness 0,75 mm, coated with polyester paint in white colour RAL 9010

## FRAME TYPE

In DRE and DRS version door frame is filled with PUR foam. It is made of stainless, acid-proof steel (N), type 1.4301, thickness 0,8 mm, mat surface 2B or galvanized steel sheet (L) thickness 0,75 mm, coated with polyester paint in white colour (RAL 9010).

Freezer door frame and threshold are equipped in heating system (heating cable, 230 V, 40 W/rm)

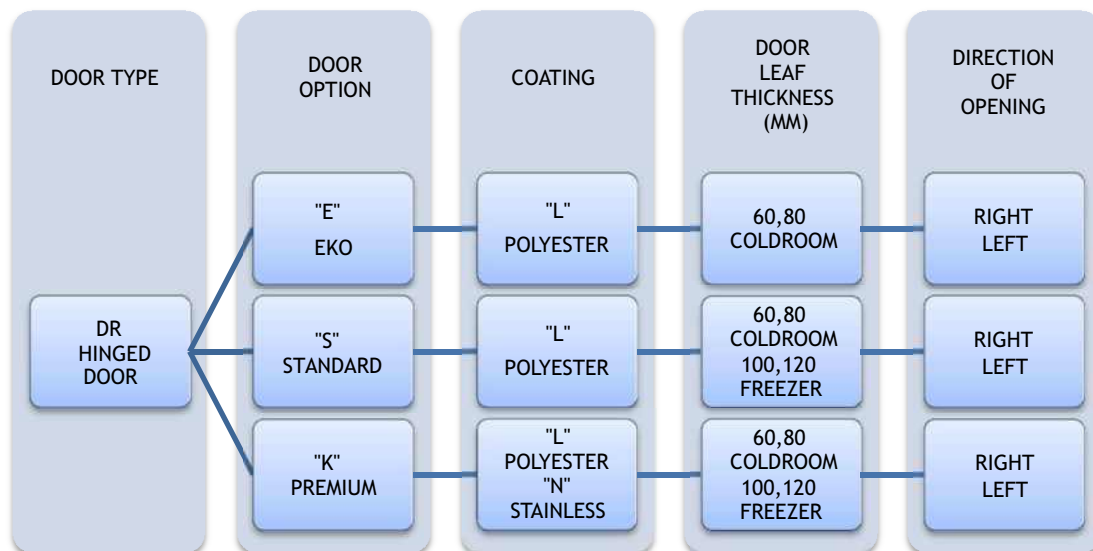
DRE version is equipped in angle bar shaped frame, which is made of galvanized steel sheet (L) thickness 0,75 mm, coated with polyester paint in white colour (RAL 9010).

## HINGES

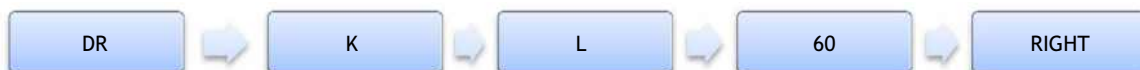
Hinges are delivered by FERMOD. Thanks to door lifting option during opening and closing the hinges prevent the lower gasket from friction.

## OPTIONS

- Untypical door leaf finish:
  - Stainless, acid-proof steel (N), type 1.4301, thickness 0,8 mm, grinded surface 4B or grained surface
  - Galvanized steel sheet (L) thickness 0,75 mm, coated with polyester paint other than white RAL 9010
  - panel made of polyester resins reinforced with glass fibre in RAL 9016 with stainless, acid-proof door leaf framing (N), type 1.4301
- Availability to produce door with and without a threshold (lower element is installed in the floor):
- Door windows
  - Round window  $\varnothing 280$  mm
  - Window in a different shape and dimension (special enquiry)
  - Execution of opening for a individual glazing
- Door adjusted to top railway system
- Flashing of the door opening



Enquiry/order example:



DRK-L 60 - coldroom hinged door, polyester paint finish, door leaf thickness 60 mm, direction of opening to the right.

# HINGED DOORS ECO DRE-L 60 T>0° C (COLDROOM)

## Characteristic:

- Door leaf made of sandwich panel with PIR core 60 mm
- Door finish - galvanized steel sheet coated with polyester paint in white colour RAL 9010
- Door leaf framing - steel channel section, made of steel sheet coated with polyester paint in white colour RAL 9010
- Lock - delivered by FERMOD
- Hinges - delivered by FERMOD
- Frame - angle bar shaped, made of steel sheet coated with polyester paint in RAL 9010

DRE-L 60 SINGLE LEAF								
S \ H	1700	1800	1900	2000	2100	2200	2300	2400
700	457	464	471	478	485	493	500	507
800	460	467	474	481	489	496	503	510
900	463	470	477	484	492	499	506	513
1000	469	476	484	491	498	506	513	521
1100	491	499	507	515	523	531	539	546
1200	537	548	559	569	580	591	602	613
1300	588	601	615	629	642	655	669	683
1400	591	604	618	632	645	659	672	686
1500	594	607	621	635	648	662	675	689

DRE-L 60 DOUBLE LEAF						
S \ H	2000	2100	2200	2300	2400	2500
1400	876	890	905	919	933	947
1600	882	896	910	925	939	953
1800	888	902	917	931	945	959
2000	901	916	931	945	960	974
2200	915	929	944	959	974	989
2400	1023	1043	1063	1084	1104	1124
2600	1132	1157	1183	1208	1233	1258

## STANDARD HINGED DOOR - POLYESTER DRS-L 60 T>0 ° C (COLDROOM)

### Characteristic:

- Door leaf made of sandwich panel with PIR core 60 mm
- Door finish - galvanized steel sheet coated with polyester paint in white colour RAL 9010
- Door leaf framing - steel channel section, made of steel sheet coated with polyester paint in white colour RAL 9010
- Lock - delivered by FERMOD
- Hinges - delivered by FERMOD
- Frame - complex and profiled, made of steel sheet coated with polyester paint in RAL 9010
- Lower element - channel section made of stainless, acid-proof steel sheet, type 1.4301

<b>DRS-L 60 SINGLE LEAF</b>									
S \ H	1700	1800	1900	2000	2100	2200	2300	2400	2500
<b>700</b>	551	559	566	574	582	614	645	677	708
<b>800</b>	566	574	583	591	600	634	667	701	735
<b>900</b>	581	590	600	609	618	654	689	725	761
<b>1000</b>	597	606	616	626	636	673	712	749	787
<b>1100</b>	652	663	674	685	696	739	781	824	867
<b>1200</b>	677	689	701	713	726	773	820	868	915
<b>1300</b>	694	707	720	733	746	795	845	894	944
<b>1400</b>	711	725	738	752	766	818	869	922	974
<b>1500</b>	728	743	757	771	786	840	894	949	1 003

<b>DRS-L 80 DOUBLE LEAF</b>						
S \ H	2000	2100	2200	2300	2400	2500
<b>1400</b>	1 019	1 033	1 047	1 061	1 075	1 089
<b>1600</b>	1 055	1 070	1 085	1 100	1 115	1 130
<b>1800</b>	1 090	1 106	1 123	1 139	1 155	1 171
<b>2000</b>	1 125	1 143	1 160	1 178	1 195	1 213
<b>2200</b>	1 161	1 179	1 198	1 217	1 235	1 254
<b>2400</b>	1 196	1 216	1 236	1 256	1 275	1 295
<b>2600</b>	1 231	1 253	1 273	1 294	1 315	1 336

### Options:

- door leaf made of PIR sandwich panel thickness 80 mm - surcharge of 15 EUR/m<sup>2</sup>
- window, size 400 mm x 600 mm - surcharge of 105 EUR

## PREMIUM HINGED DOORS - POLYESTER DRK-L 60 T>0 ° C (COLDROOM)

### Characteristic:

- Door leaf thickness 60 mm, produced on the press, by high pressure injection of PUR foam into door framework
- Door finish - galvanized steel sheet coated with polyester paint in white colour RAL 9010
- Door leaf core - polyurethane foam, density of minimum 40 kg/m<sup>3</sup>
- Lock - delivered by FERMOD
- Hinges - delivered by FERMOD
- Frame - complex and profiled, made of steel sheet coated with polyester paint in RAL 9010
- Lower element - channel section made of stainless, acid-proof steel sheet, type 1.4301

DRK-L 60 SINGLE LEAF									
S \ H	1700	1800	1900	2000	2100	2200	2300	2400	2500
700	589	602	616	629	643	656	669	683	696
800	605	614	623	632	649	666	683	701	718
900	621	631	640	650	668	685	703	721	739
1000	663	668	673	678	732	740	749	758	767
1100	733	745	756	768	779	791	802	814	825
1200	737	749	761	772	784	806	816	825	835
1300	770	784	797	811	825	839	851	862	873
1400	786	800	813	827	840	854	864		
1500	818	832	847	861	876	891			

DRK-L 80 DOUBLE LEAF						
S \ H	2000	2100	2200	2300	2400	2500
1400	1090	1103	1116	1129	1143	1156
1500	1101	1119	1137	1155	1173	1191
1600	1112	1135	1158	1181	1203	1226
1700	1135	1157	1183	1209	1235	1262
1800	1157	1178	1207	1237	1267	1297
1900	1179	1199	1232	1266	1299	1332
2000	1202	1220	1257	1294	1331	1368
2100	1209	1241	1276	1312	1347	1403
2200	1215	1263	1296	1329	1362	
2300	1219	1283	1340	1347	1378	
2400	1222	1304	1385			
2500	1226	1324	1430			

### Options:

- door leaf thickness 80 mm - surcharge of 30 EUR/m<sup>2</sup>
- window, size 400 mm x 600 mm - surcharge of 105 EUR
- door made in colour other than RAL 9010 - surcharge of 60 EUR/m<sup>2</sup>

## PREMIUM HINGED DOORS - STAINLESS DRK-N 60 T>0 °C (COLDROOM)

### Characteristic:

- Door leaf thickness 60 mm, produced on the press, by high pressure injection of PUR foam into door framework
- Door finish - stainless, acid-proof steel, type 1.4301, mat surface 2B or grinded surface 4N (option)
- Door leaf core - polyurethane foam, density of minimum 40 kg/m<sup>3</sup>
- Lock - delivered by FERMOD
- Hinges - delivered by FERMOD
- Frame - complex and profiled, made of stainless, acid-proof mat surface 2B or grinded surface 4N (option)
- Lower element - channel section made of stainless, acid-proof steel sheet, type 1.4301

DRK-N 60 SINGLE LEAF									
S \ H	1700	1800	1900	2000	2100	2200	2300	2400	2500
700	766	769	789	808	828	848	868	887	905
800	794	814	833	853	871	890	908	926	944
900	822	842	863	883	903	923	943	963	984
1000	859	883	907	931	953	972	992	1011	1031
1100	913	937	960	983	1006	1029	1052	1076	1099
1200	924	953	981	1010	1039	1063	1083	1104	1124
1300	972	1000	1029	1057	1085	1114	1139	1165	1190
1400	1009	1037	1065	1093	1121	1150	1170		
1500	1046	1074	1101	1129	1157	1185			

DRK-N 80 DOUBLE LEAF						
S \ H	2000	2100	2200	2300	2400	2500
1400	1321	1362	1402	1443	1483	1523
1500	1343	1383	1424	1464	1504	1544
1600	1365	1405	1445	1485	1525	1565
1700	1408	1442	1483	1525	1566	1607
1800	1451	1479	1522	1564	1606	1649
1900	1494	1517	1560	1604	1647	1691
2000	1537	1554	1598	1643	1688	1733
2100	1580	1591	1619	1664	1708	1775
2200	1623	1628	1639	1684	1729	
2300	1644	1670	1697	1704	1749	
2400	1666	1711	1756			
2500	1688	1752	1814			

### Options:

- door leaf thickness 80 mm - surcharge of 30 EUR/m<sup>2</sup>
- window, size 400 mm x 600 mm - surcharge of 105 EUR



## STANDARD HINGED DOOR - POLYESTER DRS-L 100 T>-25 °C (FREEZER)

### Characteristic:

- **Door leaf** made of sandwich panel with PIR core 100 mm
- **Door finish** - galvanized steel sheet coated with polyester paint in white colour RAL 9010
- **Door leaf framing** - steel channel section, made of steel sheet coated with polyester paint in white colour RAL 9010
- **Lock** - delivered by FERMOD
- **Hinges** - delivered by FERMOD
- **Frame** - complex and profiled, made of steel sheet coated with polyester paint in RAL 9010
- **Lower element** - channel section made of stainless, acid-proof steel sheet, type 1.4301

DRS-L 100 SINGLE LEAF									
S \ H	1700	1800	1900	2000	2100	2200	2300	2400	2500
<b>700</b>	713	723	733	744	754	780	806	832	858
<b>800</b>	734	748	761	775	790	810	831	851	872
<b>900</b>	754	772	790	807	825	840	855	870	886
<b>1000</b>	775	790	805	820	836	856	876	897	917
<b>1100</b>	800	813	826	839	852	878	905	931	957
<b>1200</b>	808	825	842	859	876	898	921	943	966
<b>1300</b>	817	837	858	879	899	924	949	974	/
<b>1400</b>	851	872	894	916	937	956	975	/	/
<b>1500</b>	885	908	930	953	975	985	/	/	/

### Options:

- door leaf made of PIR sandwich panel thickness 120 mm - surcharge of 15 EUR/m<sup>2</sup>
- door leaf made of PIR sandwich panel thickness 160 mm - surcharge of 40 EUR/m<sup>2</sup>
- window, size 400 mm x 600 mm - surcharge of 105 EUR

## PREMIUM HINGED DOORS - POLYESTER DRK-L 100 T>-25 °C (FREEZER)

### Characteristic:

- **Door leaf** thickness 100 mm, produced on the press, by high pressure injection of PUR foam into door framework
- **Door finish** - galvanized steel sheet coated with polyester paint in white colour RAL 9010
- **Door leaf core** - polyurethane foam, density of minimum 40 kg/m<sup>3</sup>
- **Lock** - delivered by FERMOD
- **Hinges** - delivered by FERMOD
- **Frame** - complex and profiled, made of steel sheet coated with polyester paint in RAL 9010
- **Lower element** - channel section made of stainless, acid-proof steel sheet, type 1.4301

<b>DRK-L 100 SINGLE LEAF</b>										
<b>S</b>	<b>H</b>	<b>1700</b>	<b>1800</b>	<b>1900</b>	<b>2000</b>	<b>2100</b>	<b>2200</b>	<b>2300</b>	<b>2400</b>	<b>2500</b>
<b>700</b>		774	787	801	814	827	841	854	868	881
<b>800</b>		798	813	827	841	856	870	885	899	914
<b>900</b>		823	838	853	869	884	900	915	931	946
<b>1000</b>		862	882	903	924	968	988	996	996	997
<b>1100</b>		868	884	901	917	958	959	972	990	1010
<b>1200</b>		906	926	946	967	987	1005	1023	1041	1058
<b>1300</b>		933	953	973	993	1013	1033	1047	1060	
<b>1400</b>		959	980	1000	1021	1041	1062	1074		
<b>1500</b>		986	1007	1028	1049	1070	1090			

### Options:

- door leaf thickness 120 mm - surcharge of 30 EUR/m<sup>2</sup>
- door leaf made of PIR sandwich panel thickness 150 mm - surcharge of 60 EUR/m<sup>2</sup>
- window, size 400 mm x 600 mm - surcharge of 105 EUR
- door made in colour other than RAL 9010 - surcharge of 60 EUR/m<sup>2</sup>

## PREMIUM HINGED DOORS - STAINLESS DRK-N 100 T>-25 °C (FREEZER)

### Characteristic:

- **Door leaf** thickness 100 mm, produced on the press, by high pressure injection of PUR foam into door framework
- **Door finish** - stainless, acid-proof steel, type 1.4301, mat surface 2B or grinded surface 4N (option)
- **Door leaf core** - polyurethane foam, density of minimum 40 kg/m<sup>3</sup>
- **Lock** - delivered by FERMOD
- **Hinges** - delivered by FERMOD
- **Frame** - complex and profiled, made of stainless, acid-proof mat surface 2B or grinded surface 4N (option)
- **Lower element** - channel section made of stainless, acid-proof steel sheet, type 1.4301

<b>DRK-N 100 SINGLE LEAF</b>										
S	H	1700	1800	1900	2000	2100	2200	2300	2400	2500
<b>700</b>		889	911	934	956	979	1001	1024	1046	1069
<b>800</b>		923	946	969	993	1018	1042	1067	1092	1116
<b>900</b>		957	982	1007	1033	1059	1085	1111	1137	1164
<b>1000</b>		1009	1039	1067	1097	1122	1153	1184	1215	1245
<b>1100</b>		1028	1053	1078	1103	1127	1167	1207	1246	1286
<b>1200</b>		1059	1086	1114	1141	1169	1196	1244	1292	1340
<b>1300</b>		1092	1121	1150	1179	1208	1237	1263	1293	1323
<b>1400</b>		1126	1156	1186	1217	1247	1277	1329	1359	1389
<b>1500</b>		1159	1191	1223	1254	1286	1318	1350	1382	1414

### Options:

- door leaf thickness 120 mm - surcharge of 30 EUR/m<sup>2</sup>
- door leaf made of PIR sandwich panel thickness 150 mm - surcharge of 60 EUR/m<sup>2</sup>
- window, size 400 mm x 600 mm - surcharge of 105 EUR

## PREMIUM HINGED FLUSH DOORS - POLYESTER DRKZ-L 80 T>0°C (COLDROOM)

### Characteristic:

- Door leaf thickness 80 mm, produced on the press, by high pressure injection of PUR foam into door framework;
- Door finish - steel channel section, made of steel sheet coated with polyester paint in white colour RAL 9010
- Door leaf core - polyurethane foam, density of minimum min. 40 kg/m<sup>3</sup>
- Lock - delivered by FERMOD
- Hinges - delivered by FERMOD/RAHRBACH
- The frame flush with the external wall surface - complex and profiled, made of steel sheet coated with polyester paint in RAL 9010
- Lower element- channel section made of stainless, acid-proof steel sheet, type 1.4301

DRKZ-L 80 SINGLE LEAF									
S \ H	1700	1800	1900	2000	2100	2200	2300	2400	2500
<b>700</b>	751	567	596	626	655	684	714	743	773
<b>800</b>	771	746	763	779	796	813	830	847	864
<b>900</b>	794	761	773	784	805	826	848	869	890
<b>1000</b>	850	784	796	807	833	854	875	896	917
<b>1100</b>	934	849	856	863	926	937	948	960	971
<b>1200</b>	941	922	936	950	965	980	994	924	937
<b>1300</b>	970	927	941	955	970	997	1009		

DRKZ-L 80 DOUBLE LEAF						
S \ H	2000	2100	2200	2300	2400	2500
<b>1400</b>	1182	1197	1211	1225	1239	1253
<b>1500</b>	1194	1214	1233	1253	1272	1292
<b>1600</b>	1206	1231	1256	1281	1305	1330
<b>1700</b>	1231	1254	1283	1311	1340	1368
<b>1800</b>	1255	1277	1309	1342	1374	1407
<b>1900</b>	1279	1300	1336	1372	1409	1445
<b>2000</b>	1303	1323	1363	1403	1443	1483
<b>2100</b>	1311	1346	1384	1422	1460	1521
<b>2200</b>	1318	1369	1405	1441	1477	
<b>2300</b>	1322	1391	1453	1461	1495	
<b>2400</b>	1326	1414	1502			
<b>2500</b>	1329	1436	1550			

### Options:

- window, size 400 mm x 600 mm - surcharge of 105 EUR
- door made in colour other than RAL 9010 - surcharge of 60 EUR/m<sup>2</sup>

## PREMIUM HINGED FLUSH DOORS - STAINLESS DRKZ-N 80 T>0°C (COLDROOM)

### Characteristic:

- **Door leaf** thickness 80 mm, produced on the press, by high pressure injection of PUR foam into door framework;
- **Door finish** - stainless, acid-proof steel, type 1.4301, mat surface 2B or grinded surface 4N (option)
- **Door leaf core** - polyurethane foam, density of minimum min. 40 kg/m<sup>3</sup>
- **Lock** - delivered by FERMOD
- **Hinges** - delivered by FERMOD/RAHRBACH
- **The frame flush with the external wall surface** - complex and profiled, made of stainless, acid-proof mat surface 2B or grinded surface 4N (option)
- **Lower element**- channel section made of stainless, acid-proof steel sheet, type 1.4301

<b>DRKZ-N 80 SINGLE LEAF</b>									
<b>S</b> \ <b>H</b>	<b>1700</b>	<b>1800</b>	<b>1900</b>	<b>2000</b>	<b>2100</b>	<b>2200</b>	<b>2300</b>	<b>2400</b>	<b>2500</b>
<b>700</b>	919	922	946	969	993	1017	1041	1064	1085
<b>800</b>	953	976	999	1023	1045	1067	1088	1110	1132
<b>900</b>	986	1010	1035	1059	1083	1107	1132	1155	1180
<b>1000</b>	1030	1059	1088	1117	1143	1166	1190	1213	1236
<b>1100</b>	1061	1088	1114	1141	1168	1195	1222	1249	1276
<b>1200</b>	1093	1127	1161	1195	1229	1257	1282	1306	1330
<b>1300</b>	1150	1184	1217	1251	1284	1318	1348		

<b>DRKZ-N 80 DOUBLE LEAF</b>						
<b>S</b> \ <b>H</b>	<b>2000</b>	<b>2100</b>	<b>2200</b>	<b>2300</b>	<b>2400</b>	<b>2500</b>
<b>1400</b>	1426	1470	1513	1557	1600	1644
<b>1500</b>	1449	1493	1536	1580	1623	1667
<b>1600</b>	1473	1516	1559	1602	1646	1689
<b>1700</b>	1519	1556	1601	1645	1690	1734
<b>1800</b>	1565	1597	1642	1688	1734	1779
<b>1900</b>	1570	1594	1640	1686	1732	1777
<b>2000</b>	1616	1634	1680	1727	1775	1821
<b>2100</b>	1661	1673	1702	1749	1796	1865
<b>2200</b>	1706	1712	1723	1770	1817	
<b>2300</b>	1729	1755	1784	1792	1839	
<b>2400</b>	1752	1799	1846			
<b>2500</b>	1774	1842	1907			

### Options:

- window, size 400 mm x 600 mm - surcharge of 105 EUR

## PREMIUM HINGED FLUSH DOORS - POLYESTER DRKZ-L 100 T>-25°C (FREEZER)

### Characteristic:

- **Door leaf** thickness 100 mm, produced on the press, by high pressure injection of PUR foam into door framework;
- **Door finish** - steel channel section, made of steel sheet coated with polyester paint in white colour RAL 9010
- **Door leaf core** - polyurethane foam, density of minimum min. 40 kg/m<sup>3</sup>
- **Lock** - delivered by FERMOD
- **Hinges** - delivered by FERMOD/RAHRBACH
- **the frame flush with the external wall surface** - complex and profiled, made of steel sheet coated with polyester paint in RAL 9010
- **Lower element**- channel section made of stainless, acid-proof steel sheet, type 1.4301

<b>DRKZ-L 100 SINGLE LEAF</b>									
<b>S \ H</b>	<b>1700</b>	<b>1800</b>	<b>1900</b>	<b>2000</b>	<b>2100</b>	<b>2200</b>	<b>2300</b>	<b>2400</b>	<b>2500</b>
<b>700</b>	810	824	838	852	866	880	895	909	923
<b>800</b>	836	851	866	881	896	911	926	942	957
<b>900</b>	861	878	894	910	926	942	959	975	991
<b>1000</b>	902	924	946	967	1014	1035	1042	1043	1044
<b>1100</b>	943	961	979	996	1041	1042	1056	1076	1097
<b>1200</b>	984	1006	1028	1050	1072	1092	1111	1131	1150
<b>1300</b>	1013	1035	1057	1079	1101	1123	1137		

### Options:

- window, size 400 mm x 600 mm - surcharge of 105 EUR
- door made in colour other than RAL 9010 - surcharge of 60 EUR/m<sup>2</sup>

## PREMIUM HINGED FLUSH DOORS - STAINLESS DRKZ-N 100 T>-25°C (FREEZER)

### Characteristic:

- **Door leaf** thickness 100 mm, produced on the press, by high pressure injection of PUR foam into door framework;
- **Door finish** - stainless, acid-proof steel, type 1.4301, mat surface 2B or grinded surface 4N (option)
- **Door leaf core** - polyurethane foam, density of minimum min. 40 kg/m<sup>3</sup>
- **Lock** - delivered by FERMOD
- **Hinges** - delivered by FERMOD/RAHRBACH
- **The frame flush with the external wall surface** - made of stainless, acid-proof mat surface 2B or grinded surface 4N (option)
- **Lower element** - channel section made of stainless, acid-proof steel sheet, type 1.4301

<b>DRKZ-N 100 SINGLE LEAF</b>										
<b>S</b>	<b>H</b>	<b>1700</b>	<b>1800</b>	<b>1900</b>	<b>2000</b>	<b>2100</b>	<b>2200</b>	<b>2300</b>	<b>2400</b>	<b>2500</b>
<b>700</b>		991	1016	1041	1066	1091	1116	1141	1166	1191
<b>800</b>		1029	1055	1080	1106	1134	1161	1189	1216	1244
<b>900</b>		1067	1095	1122	1151	1180	1209	1238	1267	1297
<b>1000</b>		1125	1157	1189	1222	1251	1285	1319	1353	1388
<b>1100</b>		1135	1163	1190	1217	1244	1288	1332	1376	1419
<b>1200</b>		1191	1222	1253	1284	1315	1346	1399	1453	1507
<b>1300</b>		1229	1261	1294	1326	1359	1391	1420		

### Options:

- door leaf thickness 120 mm - surcharge of 30 EUR/m<sup>2</sup>
- window, size 400 mm x 600 mm - surcharge of 105 EUR



## COLDROOM AND FREEZER SLIDING DOORS, “DP” TYPE

### APPLICATION

DP doors are applied in coldrooms and freezers within the temperature from  $-40^{\circ}\text{C}$  to  $+50^{\circ}\text{C}$ . The structure of the door ensures its strength and durability. High insulation value has been achieved thanks to polyurethane foam core (PUR).

DP - lightweight, up to 120 kg

DP - heavyweight, up to 400 kg

### DOOR LEAF

DP doors are available in 2 versions: In DPS (STANDARD) version door leaf is made of sandwich panel with PIR core and framed by steel channel section. In DPK (PREMIUM) version door leaf is produced on the press, by high pressure injection of PUR foam into door framework. The density of PUR core is not less than  $40\text{kg}/\text{m}^3$ .

#### Available thicknesses:

- 60, 80 mm - coldroom door (single and double leaf)
- 100, 120, 150, 160mm - freezer door (single leaf)

#### STANDARD door leaf finish (sandwich panel):

- Galvanized steel sheet (L) thickness 0,5 mm, coated with polyester paint in white colour RAL 9010

#### PREMIUM door leaf finish:

- Stainless, acid-proof steel (N), type 1.4301, thickness 0,8 mm, mat surface 2B
- Galvanized steel sheet (L) thickness 0,75 mm, coated with polyester paint in white colour RAL 9010

Door leaf is equipped with gasket delivered by FERMOD (F).

### FRAME TYPE

In both DPS and DPK version door frame is filled with PUR foam. It is made of stainless, acid-proof steel (N), type 1.4301, thickness 1,5 mm, mat surface 2B or galvanized steel sheet (L) thickness 1,5 mm, coated with polyester paint in white colour (RAL 9010).

Freezer door frame and threshold are equipped in heating system (heating cable, 230 V, 40 W/rm).



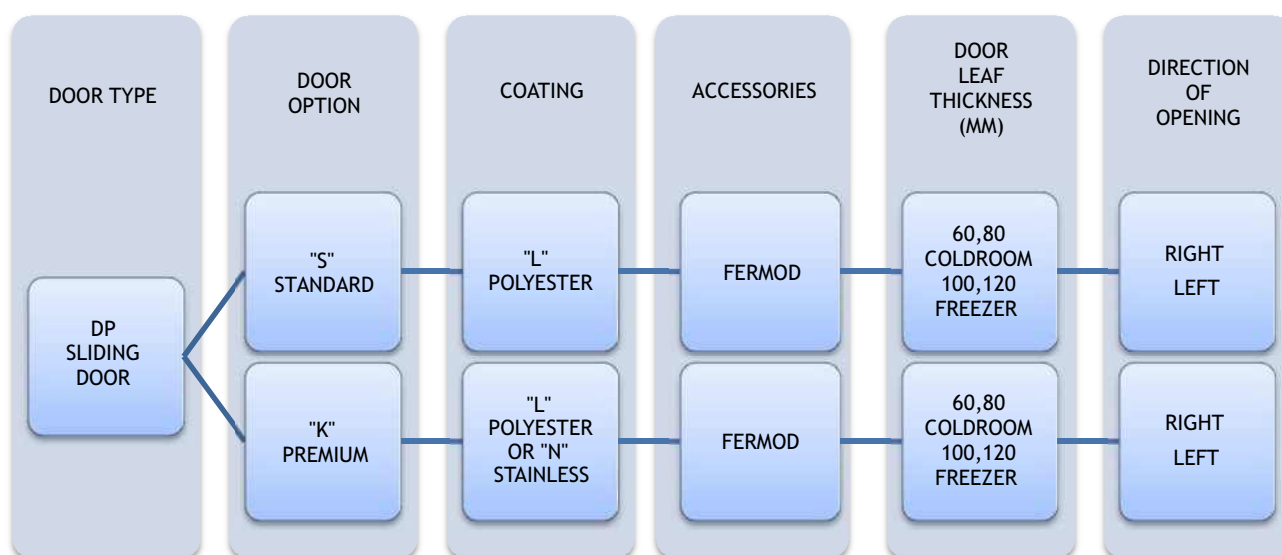
Lock is delivered by FERMOD (F). It is equipped with patent insert with possibility of emergency opening from the inside even if the door is locked.

SUSPENSION SYSTEM

- FERMOD suspension system (F), aluminium rail - lightweight type
- FERMOD suspension system (F), galvanized steel or stainless steel rail - heavyweight type

OPTIONS

- Untypical door leaf finish:
  - Stainless, acid-proof steel (N), type 1.4301, thickness 0,8 mm, grinded surface 4B or grained surface
  - Galvanized steel sheet (T) thickness 0,75 mm, coated with polyester paint other than white
  - panel made of polyester resins reinforced with glass fibre in RAL 9016 with stainless, acid-proof door leaf framing (N), type 1.4301
- Availability to produce door with and without a threshold (lower element is installed in the floor)
- Flashing of the door opening
- Application of automatic kits delivered by FERMOD (F)
- Door windows:
  - Round window  $\varnothing 280$  mm
  - Window in a different shape (special enquiry)
- Door adjusted to top railway system



Enquiry/order example:



DPK-NF 60 - Premium coldroom sliding door, stainless steel finish, FERMOD accessories, door leaf thickness 60 mm, direction of opening to the right.

## STANDARD SLIDING DOOR - POLYESTER - FERMOD ACCESSORIES - DPS-LF 60 T>0 °C (COLDROOM)

### Characteristic:

- Door leaf made of sandwich panel with PIR core 60 mm
- Door finish - galvanized steel sheet, coated with polyester paint in white colour RAL 9010
- Door leaf framing - steel channel section, made of stainless, acid-proof steel sheet, type 1.4301
- Frame - complex and profiled, made of steel sheet coated with polyester paint in RAL 9010
- Accessories - delivered by FERMOD, made of aluminium
- Lower element - channel section made of stainless, acid-proof steel sheet, type 1.4301

<b>DPS-LF 60 SINGLE LEAF</b>								
<b>S \ H</b>	<b>1800</b>	<b>1900</b>	<b>2000</b>	<b>2100</b>	<b>2200</b>	<b>2300</b>	<b>2400</b>	<b>2500</b>
<b>800</b>	1211	1219	1228	1237	1246	1255	1264	1273
<b>900</b>	1227	1237	1247	1257	1267	1276	1286	1296
<b>1000</b>	1245	1255	1266	1277	1287	1298	1308	1319
<b>1100</b>	1372	1383	1394	1406	1417	1429	1440	1451
<b>1200</b>	1415	1427	1440	1452	1465	1477	1489	1502
<b>1300</b>	1450	1464	1477	1490	1503	1517	1530	1543
<b>1400</b>	1486	1500	1514	1529	1543	1557	1571	1585
<b>1500</b>	1523	1538	1553	1568	1583	1598	1613	1628
<b>1600</b>	1560	1576	1592	1608	1623	1640	1655	1671
<b>1700</b>	1669	1686	1701	1718	1734	1750	1766	1782
<b>1800</b>	1686	1703	1720	1737	1754	1771	1788	1805
<b>1900</b>	1730	1747	1765	1783	1796	1810	1824	1838
<b>2000</b>	1773	1792	1810	1829	1847	1866	1884	1903

<b>S \ H</b>	<b>2500</b>	<b>2600</b>	<b>2700</b>	<b>2800</b>	<b>3000</b>	<b>3200</b>	<b>3400</b>	<b>3600</b>	<b>3800</b>	<b>4000</b>
<b>1500</b>	1577	1610	1629	1649	1668	1778	1809	1840	1872	1903
<b>1600</b>	1618	1704	1725	1745	1766	1881	1914	1946	1979	2011
<b>1700</b>	1782	1798	1820	1841	1863	1985	2018	2052	2086	2119
<b>1800</b>	1805	1822	1844	1867	1889	2014	2049	2085	2121	2156
<b>1900</b>	1838	1845	1869	1893	1916	2044	2081	2118	2155	2192
<b>2000</b>	1903	1921	1947	1972	1997	2130	2169	2208	2247	2286
<b>2200</b>	1950	1975	2000	2025	2051	2190	2232	2274	2317	2778
<b>2400</b>	2049	2084	2118	2152	2187	2326	2361	2397	2887	2935
<b>2600</b>	2199	2230	2260	2291	2322	2405	2487	2997	3045	3092
<b>2800</b>	2370	2407	2444	2480	2517	2554	3011	3072	3133	3194
<b>3000</b>	2455	2490	2525	2560	2595	3081	3135	3189	3243	3297

Prices in bold refer to doors with heavy system

### Options:

- door leaf made of PIR sandwich panel thickness 80 mm - surcharge of 15 EUR/m<sup>2</sup>
- window, size 400 mm x 600 mm - surcharge of 105 EUR
- lock with patent insert with possibility of opening from the inside - surcharge of 160 EUR
- handle support (lever) for light-weight door - surcharge of 160 EUR (in heavy-weight door this option is included free of charge)

## STANDARD SLIDING DOOR - POLYESTER - FERMOD ACCESSORIES - DPS-LF 100 T> -25°C (FREEZER)

### Characteristic:

- Door leaf made of sandwich panel with PIR core 100 mm
- Door finish - galvanized steel sheet, coated with polyester paint in white colour RAL 9010
- Door leaf framing - steel channel section, made of stainless, acid-proof steel sheet, type 1.4301
- Frame - complex and profiled, made of steel sheet coated with polyester paint in RAL 9010
- Accessories - delivered by FERMOD, made of aluminium
- Lower element - channel section made of stainless, acid-proof steel sheet, type 1.4301

DPS-LF 100 SINGLE LEAF								
S \ H	1800	1900	2000	2100	2200	2300	2400	2500
<b>800</b>	1364	1377	1391	1404	1416	1428	1439	1451
<b>900</b>	1384	1398	1412	1426	1439	1452	1465	1478
<b>1000</b>	1404	1418	1433	1447	1462	1476	1490	1505
<b>1100</b>	1541	1570	1578	1587	1602	1617	1633	1648
<b>1200</b>	1591	1607	1623	1640	1656	1673	1689	1706
<b>1300</b>	1630	1641	1651	1662	1684	1707	1729	1752
<b>1400</b>	1670	1689	1707	1725	1743	1762	1780	1798
<b>1500</b>	1709	1728	1748	1767	1786	1805	1824	1844
<b>1600</b>	1748	1768	1788	1809	1829	1849	1869	1889
<b>1700</b>	1856	1876	1897	1917	1937	1958	1978	1999
<b>1800</b>	1876	1897	1918	1940	1961	1982	2003	2025
<b>1900</b>	1923	1945	1968	1990	2012	2034	2057	2079
<b>2000</b>	1971	1994	2017	2040	2063	2087	2110	2133

S \ H	2500	2600	2700	2800	3000	3200	3400	3600	3800	4000
<b>1500</b>	1785	1822	1847	1871	1896	2025	2063	2102	2141	2181
<b>1600</b>	1829	1920	1946	1972	1998	2133	2174	2215	2256	2297
<b>1700</b>	1999	2019	2046	2073	2100	2242	2285	2328	2371	2413
<b>1800</b>	2025	2049	2076	2104	2132	2276	2321	2366	2411	2455
<b>1900</b>	2079	2073	2103	2133	2162	2311	2357	2404	2450	2497
<b>2000</b>	2133	2156	2187	2218	2248	2373	2392	2411	2430	2449
<b>2200</b>	2185	2217	2248	2279	2310	2447	2475	2503	2531	3108
<b>2400</b>	2292	2326	2359	2393	2426	2540	2624	2708	3213	3273
<b>2600</b>	2529	2566	2604	2641	2679	2739	2798	3323	3381	3439
<b>2800</b>	2602	2646	2691	2735	2779	2824	3336	3407	3479	3551
<b>3000</b>	2750	2778	2806	2862	2917	3403	3469	3533	3598	3663

Prices in bold refer to doors with heavy system

### Options:

- door leaf made of PIR sandwich panel thickness 120 mm - surcharge of 15 EUR/m<sup>2</sup>
- door leaf made of PIR sandwich panel thickness 160 mm - surcharge of 40 EUR/m<sup>2</sup>
- window, size 400 mm x 600 mm - surcharge of 105 EUR
- lock with patent insert with possibility of opening from the inside - surcharge of 160 EUR
- handle support (lever) for light-weight door - surcharge of 160 EUR (in heavy-weight door this option is included free of charge)

## PREMIUM SLIDING DOOR - POLYESTER - FERMOD ACCESSORIES - DPK-LF 60 T>0 °C (COLDROOM)

### Characteristic:

- Door leaf thickness 60 mm, produced on the press, by high pressure injection of PUR foam into door framework
- Door finish - galvanized steel sheet coated with polyester paint in white colour RAL 9010
- Door leaf core - polyurethane foam, density of minimum 40 kg/m<sup>3</sup>
- Frame - complex and profiled, made of steel sheet coated with polyester paint in RAL 9010
- Accessories - delivered by FERMOD, made of aluminium
- Lower element - channel section made of stainless, acid-proof steel sheet, type 1.4301

DPK-LF 60 SINGLE LEAF								
S \ H	1800	1900	2000	2100	2200	2300	2400	2500
<b>800</b>	1249	1257	1265	1273	1281	1290	1297	1305
<b>900</b>	1265	1274	1283	1291	1300	1309	1317	1326
<b>1000</b>	1281	1290	1300	1309	1318	1328	1337	1347
<b>1100</b>	1329	1339	1349	1360	1370	1381	1391	1401
<b>1200</b>	1377	1388	1400	1411	1422	1433	1444	1456
<b>1300</b>	1477	1489	1501	1513	1526	1538	1550	1562
<b>1400</b>	1511	1516	1521	1525	1530	1554	1577	1600
<b>1500</b>	1545	1560	1575	1590	1605	1620	1635	1650
<b>1600</b>	1579	1593	1607	1622	1636	1660	1685	1699
<b>1700</b>	1700	1717	1733	1749	1766	1782	1798	1815
<b>1800</b>	1821	1837	1852	1868	1883	1899	1915	1930
<b>1900</b>	1863	1879	1896	1912	1928	1944	1961	1977
<b>2000</b>	1905	1925	1945	1964	1984	2004	2024	2157

S \ H	2500	2600	2700	2800	3000
<b>1500</b>	1650	1665	1712	1760	1807
<b>1600</b>	1699	1748	1765	1798	1831
<b>1700</b>	1815	1916	1951	2011	2327
<b>1800</b>	1930	2001	2071	2233	2344
<b>1900</b>	1977	2271	2323	2351	2379
<b>2000</b>	2157	2329	2375	2411	2448
<b>2200</b>	2346	2387	2427	2472	2517
<b>2400</b>	2627	2694	2761	2768	2775

Prices in bold refer to doors with heavy system

### Options:

- door leaf thickness 80 mm - surcharge of 30 EUR/m<sup>2</sup>
- window, size 400 mm x 600 mm - surcharge of 105 EUR
- lock with patent insert with possibility of opening from the inside - surcharge of 160 EUR
- door made in colour other than RAL 9010 - surcharge of 60 EUR/m<sup>2</sup>
- handle support (lever) for light-weight door - surcharge of 160 EUR (in heavy-weight door this option is included free of charge)

## PREMIUM SLIDING DOOR - POLYESTER - FERMOD ACCESSORIES - DPK-LF 100 T>-25°C (FREEZER)

### Characteristic:

- Door leaf thickness 100 mm, produced on the press, by high pressure injection of PUR foam into door framework
- Door finish - galvanized steel sheet coated with polyester paint in white colour RAL 9010
- Door leaf core - polyurethane foam, density of minimum 40 kg/m<sup>3</sup>
- Frame - complex and profiled, made of steel sheet coated with polyester paint in RAL 9010
- Accessories - delivered by FERMOD, made of aluminium
- Lower element - channel section made of stainless, acid-proof steel sheet, type 1.4301

DPK-LF 100 SINGLE LEAF								
S \ H	1800	1900	2000	2100	2200	2300	2400	2500
<b>800</b>	1417	1429	1441	1453	1465	1477	1489	1501
<b>900</b>	1455	1468	1480	1493	1506	1519	1531	1544
<b>1000</b>	1492	1506	1519	1533	1547	1561	1574	1588
<b>1100</b>	1511	1525	1539	1553	1568	1582	1596	1611
<b>1200</b>	1529	1544	1558	1573	1589	1604	1618	1633
<b>1300</b>	1662	1680	1698	1715	1733	1751	1769	1787
<b>1400</b>	1752	1773	1793	1813	1834	1854	1875	1895
<b>1500</b>	1779	1799	1820	1840	1860	1881	1901	1921
<b>1600</b>	1806	1826	1846	1867	1887	1907	1927	1947
<b>1700</b>	1833	1853	1873	1893	1913	1933	1954	1974
<b>1800</b>	1911	1931	1952	1972	1993	2013	2033	2054
<b>1900</b>	1956	1979	2001	2024	2046	2069	2091	2114
<b>2000</b>	2002	2019	2036	2071	2105	2140	2174	2299

S \ H	2500	2600	2700	2800	3000
<b>1500</b>	1895	1903	1912	1921	1964
<b>1600</b>	1926	1927	1929	1952	1977
<b>1700</b>	1974	2006	2038	2044	2527
<b>1800</b>	2054	2082	2111	2565	2574
<b>1900</b>	2114	2516	2546	2576	2606
<b>2000</b>	2299	2615	2647	2679	2711
<b>2200</b>	2680	2714	2748	2782	2816
<b>2400</b>	2924	2961	2999	3037	3075

Prices in bold refer to doors with heavy system

### Options:

- door leaf thickness 120 mm - surcharge of 30 EUR/m<sup>2</sup>
- door leaf thickness 150 mm - surcharge of 60 EUR/m<sup>2</sup>
- window, size 400 mm x 600 mm - surcharge of 105 EUR
- lock with patent insert with possibility of opening from the inside - surcharge of 160 EUR
- door made in colour other than RAL 9010 - surcharge of 60 EUR/m<sup>2</sup>
- handle support (lever) for light-weight door - surcharge of 160 EUR (in heavy-weight door this option is included free of charge)

## PREMIUM SLIDING DOOR - STAINLESS - FERMOD ACCESSORIES - DPK-NF 60 T>0 °C (COLDROOM)

### Characteristic:

- **Door leaf thickness** 60 mm, produced on the press, by high pressure injection of PUR foam into door framework
- **Door finish** - stainless, acid-proof steel, type 1.4301, mat surface 2B or grinded surface 4N (option)
- **Door leaf core** - polyurethane foam, density of minimum 40 kg/m<sup>3</sup>
- **Frame** - complex and profiled, made of stainless, acid-proof steel, type 1.4301, mat surface 2B or grinded surface 4N (option)
- **Accessories** - delivered by FERMOD, made of aluminium
- **Lower element** - channel section made of stainless, acid-proof steel sheet, type 1.4301

<b>DPK-NF 60 SINGLE LEAF</b>								
<b>S \ H</b>	<b>1800</b>	<b>1900</b>	<b>2000</b>	<b>2100</b>	<b>2200</b>	<b>2300</b>	<b>2400</b>	<b>2500</b>
<b>800</b>	1411	1427	1443	1460	1476	1492	1508	1524
<b>900</b>	1439	1456	1473	1491	1508	1525	1543	1560
<b>1000</b>	1466	1495	1523	1538	1552	1567	1582	1596
<b>1100</b>	1522	1542	1562	1581	1601	1621	1641	1660
<b>1200</b>	1578	1599	1620	1641	1662	1683	1704	1725
<b>1300</b>	1625	1647	1669	1691	1714	1736	1758	1780
<b>1400</b>	1672	1695	1719	1742	1765	1789	1812	1836
<b>1500</b>	1725	1750	1775	1799	1824	1848	1873	1898
<b>1600</b>	1779	1800	1821	1842	1863	1898	1934	1960
<b>1700</b>	1895	1922	1949	1976	2003	2030	2057	2084
<b>1800</b>	2011	2039	2067	2095	2124	2152	2180	2208
<b>1900</b>	2062	2091	2121	2150	2180	2209	2239	2268
<b>2000</b>	2114	2149	2185	2221	2257	2293	2328	2453

<b>S \ H</b>	<b>2500</b>	<b>2600</b>	<b>2700</b>	<b>2800</b>	<b>3000</b>
<b>1500</b>	1898	1912	1980	2049	2117
<b>1600</b>	1960	2007	2053	2100	2146
<b>1700</b>	2084	2145	2206	2236	2561
<b>1800</b>	2208	2237	2265	2584	2607
<b>1900</b>	2268	2632	2677	2709	2699
<b>2000</b>	2453	2730	2787	2835	2883
<b>2200</b>	2759	2785	2897	2927	3066
<b>2400</b>	3108	3214	3320	3333	3346

Prices in bold refer to doors with heavy system

### Options:

- door leaf thickness 80 mm - surcharge of 30 EUR/m<sup>2</sup>
- window, size 400 mm x 600 mm - surcharge of 105 EUR
- lock with patent insert with possibility of opening from the inside - surcharge of 216 EUR
- handle support (lever) for light-weight door - surcharge of 160 EUR (in heavy-weight door this option is included free of charge)

## PREMIUM SLIDING DOOR - STAINLESS - FERMOD ACCESSORIES - DPK-NF 100 T>-25 °C (FREEZER)

### Characteristic:

- Door leaf thickness 100 mm, produced on the press, by high pressure injection of PUR foam into door framework
- Door finish - stainless, acid-proof steel, type 1.4301, mat surface 2B or grinded surface 4N (option)
- Door leaf core - polyurethane foam, density of minimum 40 kg/m<sup>3</sup>
- Heated frame - complex and profiled, made of stainless, acid-proof steel, type 1.4301, mat surface 2B or grinded surface 4N (option)
- Accessories - delivered by FERMOD, made of aluminium
- Lower element - channel section made of stainless, acid-proof steel sheet, type 1.4301

DPK-NF 100 SINGLE LEAF								
S \ H	1800	1900	2000	2100	2200	2300	2400	2500
<b>800</b>	1637	1659	1680	1701	1722	1743	1764	1786
<b>900</b>	1688	1711	1733	1756	1778	1801	1823	1846
<b>1000</b>	1739	1763	1787	1810	1834	1858	1882	1906
<b>1100</b>	1774	1799	1824	1850	1875	1900	1925	1951
<b>1200</b>	1808	1835	1862	1888	1915	1942	1968	1995
<b>1300</b>	1895	1924	1953	1982	2011	2040	2069	2099
<b>1400</b>	1981	2013	2044	2076	2107	2139	2171	2202
<b>1500</b>	2006	2036	2067	2098	2128	2159	2189	2220
<b>1600</b>	2031	2063	2095	2127	2160	2192	2224	2256
<b>1700</b>	2129	2162	2196	2229	2262	2296	2329	2363
<b>1800</b>	2226	2261	2296	2331	2365	2400	2435	2470
<b>1900</b>	2285	2321	2357	2393	2430	2466	2502	2538
<b>2000</b>	2343	2387	2431	2475	2519	2562	2606	2730

S \ H	2500	2600	2700	2800	3000
<b>1500</b>	2220	2242	2309	2376	2443
<b>1600</b>	2256	2328	2386	2401	2416
<b>1700</b>	2363	2415	2463	2501	3238
<b>1800</b>	2470	2501	2540	3207	3250
<b>1900</b>	2538	3124	3175	3225	3275
<b>2000</b>	2730	3263	3317	3371	3424
<b>2200</b>	3345	3402	3459	3517	3574
<b>2400</b>	3663	3727	3791	3855	3919

Prices in bold refer to doors with heavy system

### Options:

- door leaf thickness 120 mm - surcharge of 30 EUR/m<sup>2</sup>
- door leaf thickness 150 mm - surcharge of 60 EUR/m<sup>2</sup>
- window, size 400 mm x 600 mm - surcharge of 105 EUR
- lock with patent insert with possibility of opening from the inside - surcharge of 216 EUR
- handle support (lever) for light-weight door - surcharge of 160 EUR (in heavy-weight door this option is included free of charge)



## GAS-TIGHT SLIDING DOORS, “DPG” TYPE

### APPLICATION

DPG doors are applied in rooms with controlled atmosphere (KA), which is the best technology to store fruits and vegetables. In standard coldrooms fruits are stored in normal atmosphere containing 21% of oxygen and 0% carbon dioxide. In controlled atmosphere the content of oxygen is below 3% and the content of carbon dioxide is below 5%. This leads to prolongation of fruits and vegetables store period without losing their quality.

DPG - lightweight, up to 120 kg

DPG - heavyweight, up to 400 kg

### DOOR LEAF

DP doors are available in 2 versions: In DSPG (STANDARD) version door leaf is made of sandwich panel with PIR core and framed by steel channel section. In DPKG (PREMIUM) version door leaf is produced on the press, by high pressure injection of PUR foam into door framework. The density of PUR core is not less than  $40 \text{ kg/m}^3$ .

#### Available thicknesses:

- 80 mm

#### STANDARD door leaf finish (sandwich panel):

- Galvanized steel sheet (L) thickness 0,5 mm, coated with polyester paint in white colour RAL 9010

#### PREMIUM door leaf finish:

- Stainless, acid-proof steel (N), type 1.4301, thickness 0,8 mm, mat surface 2B
- Galvanized steel sheet (L) thickness 0,75 mm, coated with polyester paint in white colour RAL 9010

Door leaf is equipped with gasket delivered by FERMOD (F), eccentric ball valves one for gas filling of the room, the other in order to take samples from the room atmosphere clamps to ensure door leaf tightness, revision window 528 x 828 mm, closed with a key.

### FRAME TYPE

In both DSPG and DPKG version door frame is filled with PUR foam. It is made of stainless, acid-proof steel (N), type 1.4301, thickness 0,8 mm, mat surface 2B or galvanized steel sheet (T) thickness 0,75 mm, coated with polyester paint in white colour (RAL 9010).



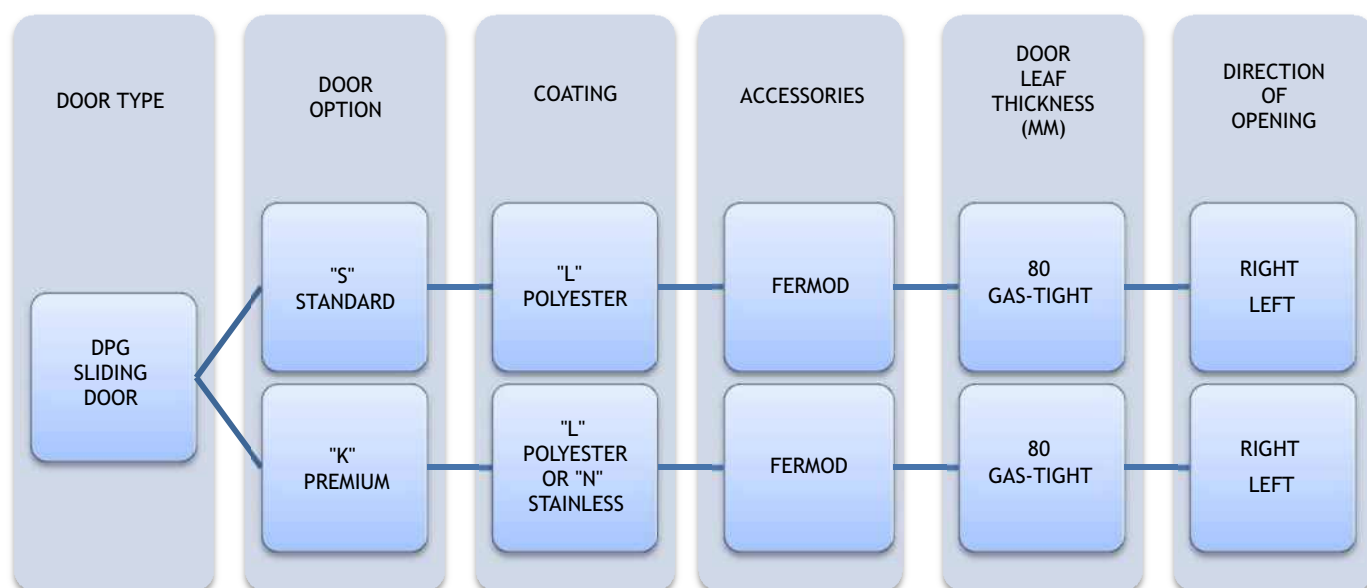
Lock is delivered by RAHRBACH. It is equipped with patent insert with possibility of emergency opening from the inside even if the door is locked.

SUSPENSION SYSTEM

- | FERMOD suspension system (F), aluminium rail - lightweight type
- | FERMOD suspension system (F), galvanized steel or stainless steel rail - heavyweight type

OPTIONS

- Untypical door leaf finish:
  - Stainless, acid-proof steel (N), type 1.4301, thickness 0,8 mm, grinded surface 4B or grained surface
  - Galvanized steel sheet (L) coated with polyester paint other than white (RAL 9010)
- Availability to produce door with and without a threshold (lower element is installed in the floor)
- Flashing of the door opening



Enquiry/order example:



**DPKG-NF 80** - Premium gas-tight coldroom sliding door, stainless steel finish, FERMOD accessories, door leaf thickness 80 mm, direction of opening to the right.

## STANDARD SLIDING DOOR - POLYESTER - FERMOD ACCESSORIES - DPSG-LF 80 T>0 °C (GAS-TIGHT)

### Characteristic:

- Door leaf made of sandwich panel with PIR core 80 mm
- Door finish - galvanized steel sheet coated with polyester paint in white colour RAL 9010
- Door leaf framing - steel channel section, made of stainless, acid-proof steel sheet, type 1.4301
- Frame - complex and profiled, made of steel sheet coated with polyester paint in RAL 9010
- Accessories - delivered by FERMOD, made of aluminium
- Lower element - channel section made of stainless, acid-proof steel sheet, type 1.4301
- Eccentric ball valves - one for gas filling of the room, the other in order to take samples from the room atmosphere
- clamps - ensure door leaf tightness
- revision window - dimension of 528 x 828 mm

DPSG-LF 80 SINGLE LEAF								
S \ H	1800	1900	2000	2100	2200	2300	2400	2500
<b>800</b>	2098	2106	2115	2123	2132	2140	2148	2157
<b>900</b>	2114	2123	2133	2142	2151	2160	2170	2179
<b>1000</b>	2130	2140	2150	2161	2170	2180	2190	2200
<b>1100</b>	2250	2261	2272	2283	2293	2304	2315	2326
<b>1200</b>	2309	2321	2332	2344	2356	2368	2379	2391
<b>1300</b>	2343	2355	2368	2380	2393	2405	2418	2431
<b>1400</b>	2376	2390	2403	2416	2430	2443	2456	2470
<b>1500</b>	2411	2426	2440	2454	2468	2482	2496	2510
<b>1600</b>	2446	2462	2476	2491	2506	2521	2536	2551
<b>1700</b>	2546	2562	2577	2592	2608	2623	2638	2654
<b>1800</b>	2562	2579	2595	2611	2627	2643	2660	2675
<b>1900</b>	2604	2621	2638	2655	2668	2681	2694	2707
<b>2000</b>	2645	2663	2681	2698	2716	2734	2752	2769

S \ H	2500	2600	2700	2800	3000	3200	3400	3600	3800	4000
<b>1500</b>	2458	2490	2508	2527	2545	2673	2703	2733	2762	2792
<b>1600</b>	2497	2580	2599	2618	2638	2771	2802	2833	2864	2894
<b>1700</b>	2654	2669	2690	2710	2731	2869	2901	2933	2965	2997
<b>1800</b>	2675	2692	2714	2735	2756	2897	2931	2964	2998	3032
<b>1900</b>	2707	2714	2737	2760	2782	2925	2960	2996	3031	3066
<b>2000</b>	2769	2787	2811	2835	2859	3008	3044	3081	3118	3155
<b>2200</b>	2814	2838	2862	2886	2911	3064	3104	3144	3184	3577
<b>2400</b>	2909	2942	2975	3008	3040	3193	3226	3260	3680	3725
<b>2600</b>	3073	3102	3131	3160	3189	3267	3346	3784	3829	3874
<b>2800</b>	3235	3269	3304	3339	3374	3409	3797	3854	3913	3970
<b>3000</b>	3315	3348	3381	3415	3448	3863	3914	3965	4016	4067

Prices in bold refer to doors with heavy system

### Options:

- lock with patent insert with possibility of opening from the inside - surcharge of 200 EUR
- handle support (lever) for light-weight door - surcharge of 190 EUR (in heavy-weight door this option is included free of charge)

## PREMIUM SLIDING DOOR - POLYESTER - FERMOD ACCESSORIES - DPKG-LF 80 T>0 °C (GAS-TIGHT)

### Characteristic:

- Door leaf thickness 80 mm, produced on the press, by high pressure injection of PUR foam into door framework
- Door finish - galvanized steel sheet coated with polyester paint in white colour RAL 9010
- Door leaf core - polyurethane foam, density of minimum 40 kg/m<sup>3</sup>
- Frame - complex and profiled, made of steel sheet coated with polyester paint in RAL 9010
- Accessories - delivered by FERMOD, made of aluminium
- Lower element - channel section made of stainless, acid-proof steel sheet, type 1.4301
- Eccentric ball valves - one for gas filling of the room, the other in order to take samples from the room atmosphere
- clamps - ensure door leaf tightness
- revision window - dimension of 528 x 828 mm

DPKG-LF 80 SINGLE LEAF								
S \ H	1800	1900	2000	2100	2200	2300	2400	2500
<b>800</b>	2233	2241	2249	2258	2267	2275	2284	2292
<b>900</b>	2249	2259	2268	2277	2286	2295	2305	2314
<b>1000</b>	2266	2276	2286	2296	2306	2316	2325	2335
<b>1100</b>	2317	2328	2338	2349	2360	2371	2382	2393
<b>1200</b>	2412	2424	2436	2448	2460	2472	2484	2496
<b>1300</b>	2447	2460	2472	2485	2497	2510	2522	2535
<b>1400</b>	2483	2495	2507	2519	2531	2545	2559	2573
<b>1500</b>	2517	2533	2548	2563	2578	2593	2609	2624
<b>1600</b>	2552	2536	2581	2595	2610	2635	2660	2675
<b>1700</b>	2676	2693	2709	2726	2743	2759	2776	2793
<b>1800</b>	2800	2816	2831	2847	2863	2879	2895	2911
<b>1900</b>	2843	2859	2876	2893	2909	2926	2943	2959
<b>2000</b>	2886	2906	2926	2946	2967	2987	3007	3143

S \ H	2500	2600	2700	2800	3000
<b>1500</b>	2624	2639	2688	2737	2785
<b>1600</b>	2675	2719	2749	2779	2809
<b>1700</b>	2793	2896	2933	2994	3340
<b>1800</b>	2911	2983	3056	3381	3358
<b>1900</b>	2959	3315	3370	3366	3395
<b>2000</b>	3143	3342	3391	3429	3468
<b>2200</b>	3361	3403	3446	3493	3540
<b>2400</b>	3518	3585	3652	3659	3666

Prices in bold refer to doors with heavy system

### Options:

- lock with patent insert with possibility of opening from the inside - surcharge of 200 EUR
- door made in colour other than RAL 9010 - surcharge of 60 EUR/m<sup>2</sup>
- handle support (lever) for light-weight door - surcharge of 190 EUR (in heavy-weight door this option is included free of charge)

## PREMIUM SLIDING DOOR - STAINLESS - FERMOD ACCESSORIES - DPKG-NF 80 T>0 °C (GAS-TIGHT)

### Characteristic:

- Door leaf thickness 80 mm, produced on the press, by high pressure injection of PUR foam into door framework
- Door finish -stainless, acid-proof steel, type 1.4301, mat surface 2B or grinded surface 4N (option)
- Door leaf core - polyurethane foam, density of minimum 40 kg/m<sup>3</sup>
- Heated frame - complex and profiled, made of stainless, acid-proof steel, type 1.4301, mat surface 2B or grinded surface 4N (option)
- Accessories - delivered by FERMOD, made of aluminium
- Lower element - channel section made of stainless, acid-proof steel sheet, type 1.4301
- Eccentric ball valves - one for gas filling of the room, the other in order to take samples from the room atmosphere
- clamps - ensure door leaf tightness
- revision window - dimension of 528 x 828 mm

DPKG-NF 80 SINGLE LEAF								
S \ H	1800	1900	2000	2100	2200	2300	2400	2500
<b>800</b>	2441	2458	2476	2493	2510	2528	2545	2562
<b>900</b>	2471	2489	2508	2527	2545	2564	2583	2601
<b>1000</b>	2500	2531	2562	2578	2593	2609	2624	2640
<b>1100</b>	2560	2581	2603	2624	2645	2667	2688	2709
<b>1200</b>	2620	2643	2665	2688	2710	2733	2755	2778
<b>1300</b>	2671	2694	2718	2742	2766	2790	2814	2838
<b>1400</b>	2721	2746	2772	2797	2822	2847	2872	2897
<b>1500</b>	2779	2805	2832	2859	2885	2912	2938	2964
<b>1600</b>	2837	2860	2882	2904	2927	2965	3003	3031
<b>1700</b>	2962	2990	3020	3049	3078	3107	3136	3165
<b>1800</b>	3086	3116	3146	3177	3208	3238	3268	3299
<b>1900</b>	3141	3173	3205	3236	3268	3300	3331	3363
<b>2000</b>	3196	3235	3273	3312	3351	3389	3427	3562

S \ H	2500	2600	2700	2800	3000
<b>1500</b>	2964	3010	3074	3139	3204
<b>1600</b>	3031	3081	3131	3182	3232
<b>1700</b>	3165	3230	3295	3328	3785
<b>1800</b>	3299	3329	3360	3811	3836
<b>1900</b>	3363	3864	3914	3951	3939
<b>2000</b>	3562	3974	4038	4091	4145
<b>2200</b>	4006	4035	4161	4194	4350
<b>2400</b>	4223	4335	4447	4257	4476

Prices in bold refer to doors with heavy system

### Options:

- lock with patent insert with possibility of opening from the inside - surcharge of 200 EUR
- handle support (lever) for light-weight door - surcharge of 190 EUR (in heavy-weight door this option is included free of charge)

# UNIVERSAL HINGED DOORS, “DRU” TYPE



## APPLICATION

DRU are multifunctional hinged doors which can be applied in different conditions and locations, such as industrial objects, production facilities store houses, etc. The structure of the door ensures its strength and durability. High insulation value has been achieved thanks to polyurethane foam core (PUR).

## DOOR LEAF

Door leaf is produced on the press, by high pressure injection of PUR foam into door framework. The density of PUR core is not less than 40 kg/m<sup>3</sup>.

### Available thickness

- 50mm - single or double-leaf

### Door leaf finish

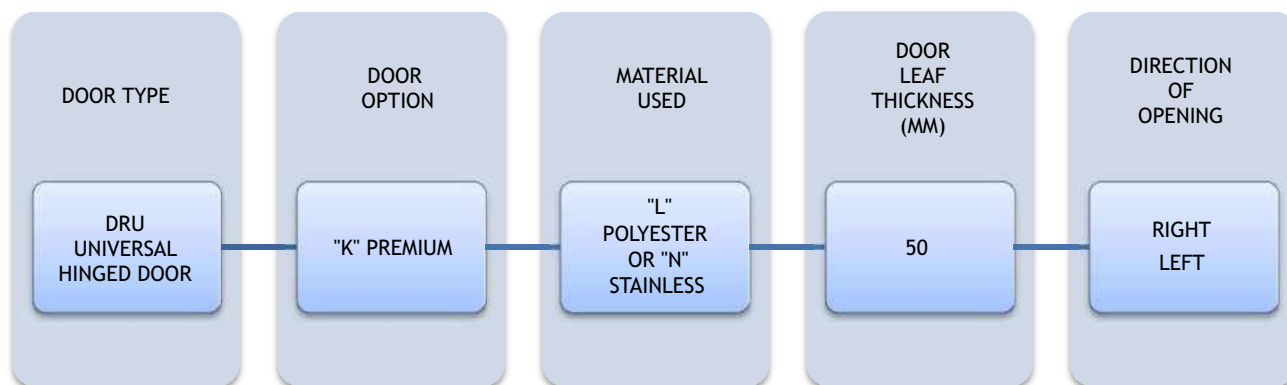
- stainless, stainless, acid-proof steel (N), type 1.4301, thickness 0,8 mm, mat surface 2B
- galvanized steel sheet 0,75 mm coated with polyester paint in white colour RAL 9010

## ACCESSORIES

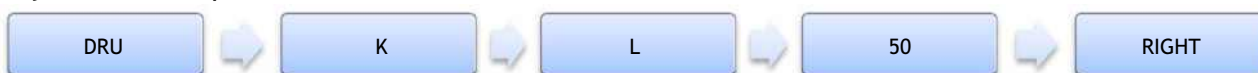
- lock with patent insert
- handle or knob made of stainless, acid-proof steel, type 1.4301
- hinges made of stainless, acid-proof steel, type 1.4301
- bolt in double-leaf door

## OPTIONS

- Untypical door leaf finish:
  - Stainless, acid-proof steel (N), type 1.4301, thickness 0,8 mm, grinded surface 4B or grained surface
  - Galvanized steel sheet (T) thickness 0,75 mm, coated with polyester paint other than white
  - Polyester laminate PECOLIT in RAL 9016 with stainless, acid-proof door leaf framing (N), type 1.4301
- Availability to produce door with and without a threshold (lower element is installed in the floor)
- Door pump
- Electric hook
- Door windows:
  - Round window ø280 mm
  - Window in a different shape (special enquiry)
  - Execution of opening for a individual glazing
- Ventilation bar:
  - Dimension 455 x 135 mm
  - Other dimension and shape - individual enquiry
- Flashing of the door opening



Enquiry/order example:



**DRU-L** - Universal hinged door, polyester paint finish, door leaf thickness 50 mm, direction of opening to the right.

# UNIVERSAL HINGED DOORS, STAINLESS DRU-N T>0 °C

## Characteristic:

- **Door leaf** thickness 50 mm, produced on the press, by high pressure injection of PUR foam into door framework
- **Door finish** - stainless, acid-proof steel, type 1.4301, mat surface 2B or grinded surface 4N (option)
- **Door leaf core** - polyurethane foam, density of minimum 40 kg/m<sup>3</sup>
- **Door closing** - lock with patent insert + stainless, acid-proof handle
- **Hinges** - stainless, acid-proof, type 1.4301
- **Frame** - complex and profiled, made of stainless, acid-proof steel, type 1.4301, mat surface 2B or grinded surface 4N (option)

DRU-N 50 SINGLE LEAF			
S \ H	2000	2100	2200
<b>800</b>	741	760	779
<b>900</b>	790	809	828
<b>1000</b>	821	839	857
<b>1100</b>	848	898	947
<b>1200</b>	922	938	1001
<b>1300</b>	952	972	1016
<b>1400</b>	982	1005	1032
<b>1500</b>	1012	1039	1040

DRU-N 50 DOUBLE LEAF							
S \ H	2000	2100	2200	2300	2400	2500	2600
<b>1200</b>	1184	1225	1266	1292	1318	1344	1370
<b>1300</b>	1215	1257	1299	1326	1354	1381	1408
<b>1400</b>	1246	1289	1333	1361	1390	1418	1447
<b>1500</b>	1276	1321	1366	1396	1425	1455	1485
<b>1600</b>	1307	1353	1399	1430	1461	1492	1523
<b>1700</b>	1338	1385	1432	1465	1497	1530	1562
<b>1800</b>	1368	1417	1466	1499	1533	1567	1600
<b>1900</b>	1451	1493	1534	1569	1604	1639	1674
<b>2000</b>	1534	1568	1602	1638	1674	1711	1747
<b>2100</b>	1565	1604	1643	1681	1718	1756	1806
<b>2200</b>	1596	1641	1685	1724	1763	1802	1865
<b>2300</b>	1627	1677	1727	1767	1807	1847	1904
<b>2400</b>	1659	1713	1769	1810	1851	1893	1942
<b>2500</b>	1690	1750	1810	1853	1895	1938	1981

Grained door surface - surcharge of 16%

## Options:

- window, size 400 mm x 600 mm - surcharge of 105 EUR
- ventilation bar - surcharge of 60 EUR

# UNIVERSAL HINGEND DOORS, POLYESTER DRU-L T>0 °C

## Characteristic:

- **Door leaf** thickness 50 mm, produced on the press, by high pressure injection of PUR foam into door framework
- **Door finish** - galvanized steel sheet coated with polyester paint in white colour RAL 9010
- **Door leaf core** - polyurethane foam, density of minimum 40 kg/m<sup>3</sup>
- **Door closing** - lock with patent insert + stainless, acid-proof handle
- **Hinges** - stainless, acid-proof, type 1.4301
- **Frame** - complex and profiled, made of stainless, acid-proof steel, type 1.4301, mat surface 2B or grinded surface 4N (option)

DRU-L 50 SINGLE LEAF			
S \ H	2000	2100	2200
<b>800</b>	559	568	577
<b>900</b>	560	569	577
<b>1000</b>	575	599	624
<b>1100</b>	603	641	679
<b>1200</b>	673	683	722
<b>1300</b>	690	701	736
<b>1400</b>	697	709	742
<b>1500</b>	714	727	749

DRU-L 50 DOUBLE LEAF								
S \ H	2000	2100	2200	2300	2400	2500	2600	
<b>1200</b>	927	940	953	966	979	1008	1037	
<b>1300</b>	943	956	970	984	998	1027	1056	
<b>1400</b>	958	973	987	1002	1016	1046	1076	
<b>1500</b>	974	989	1004	1019	1034	1065	1095	
<b>1600</b>	990	1005	1021	1037	1052	1084	1115	
<b>1700</b>	1005	1022	1038	1054	1071	1103	1134	
<b>1800</b>	1021	1038	1055	1072	1089	1122	1154	
<b>1900</b>	1073	1098	1124	1132	1141	1175	1210	
<b>2000</b>	1087	1121	1155	1155	1155	1191	1228	
<b>2100</b>	1141	1158	1213	1218	1223	1257	1304	
<b>2200</b>	1165	1190	1240	1249	1258	1289	1347	
<b>2300</b>	1189	1221	1266	1279	1293	1321	1367	
<b>2400</b>	1214	1253	1292	1310	1328	1353	1387	
<b>2500</b>	1237	1278	1319	1340	1363	1385	1407	

## Options:

- door made in colour other than RAL 9010 - surcharge of 60 EUR/m<sup>2</sup>
- window, size 400 mm x 600 mm - surcharge of 105 EUR
- ventilation bar - surcharge of 60 EUR



## SWING DOORS, “DW” TYPE



### APPLICATION

DW doors are great solution for industrial gateways with high number of passages (production facilities, supermarkets, restaurants, shops, etc.). The structure of the door ensures its strength and durability. High insulation value has been achieved thanks to polyurethane foam core (PUR).

### DOOR LEAF

Door leaf is produced on the press, by high pressure injection of PUR foam into door framework. The density of PUR core is not less than  $40 \text{ kg/m}^3$ .

#### DOOR LEAF FINISH

- Stainless, stainless, acid-proof steel (N), type 1.4301, thickness 0,8 mm, mat surface 2B
- Galvanized steel sheet 0,75 mm coated with polyester paint in white colour RAL 9010

Swing doors are equipped with round stainless, acid-proof window, diameter of  $\varnothing 280 \text{ mm}$  (standard).

Swing doors can be produced in single or double-leaf option.

### FRAME

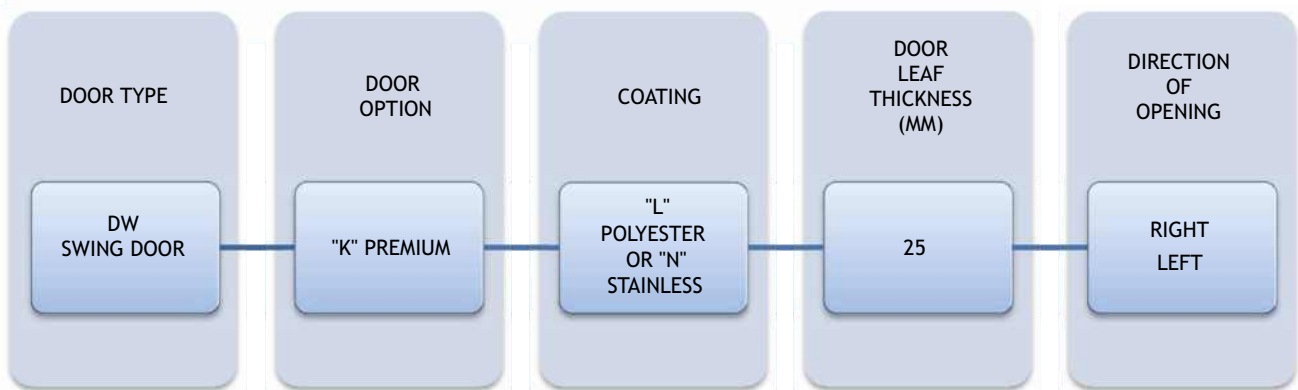
Swing doors DW installed to sandwich panel are equipped in frame in the shape of channel section, in case the DW doors are installed to brick wall are equipped in installation profile. Both channel section and installation profile are made of made of stainless, acid-proof steel, type 1.4301 or galvanized steel sheet coated with polyester paint in white colour RAL 9010.

### HINGES

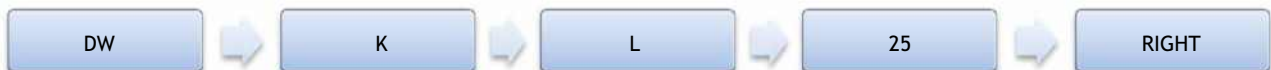
Hinges are delivered by FERMOD and are made of stainless, acid-proof steel or PVC with “STOP” function.

## OPTION

- Untypical door leaf finish:
  - Stainless, acid-proof steel (N), type 1.4301, thickness 0,8 mm, grinded surface 4B or grained surface
  - Galvanized steel sheet (T) thickness 0,75 mm, coated with polyester paint other than white
  - Polyester laminate PECOLIT in RAL 9016 with stainless, acid-proof door leaf framing (N), type 1.4301
- Door windows:
  - Window in a different shape (special enquiry)
  - Execution of opening for a individual glazing
- Flashing of the door opening
- Execution in composite material PE 500



Enquiry/order example:



**DW-L** - swing door, polyester paint finish, door leaf thickness 25 mm, direction of opening to the right.

## SWING DOORS, POLYESTER DW-L T>0 °C

### Characteristic:

- **Door leaf** thickness 25 mm, produced on the press, by high pressure injection of PUR foam into door framework
- **Door finish** - galvanized steel sheet coated with polyester paint in white colour RAL 9010
- **Door leaf core** - polyurethane foam, density of minimum 40 kg/m<sup>3</sup>
- **Hinges** - stainless, acid-proof, type 1.4301
- **Window** - round shape, stainless, acid-proof, type 1.4301
- **Buffers** preventing against damages

<b>DW-L SINGLE LEAF</b>						
S \ H	2000	2100	2200	2300	2400	2500
<b>700</b>	912	919	926	934	942	949
<b>800</b>	927	936	944	952	960	968
<b>900</b>	943	952	961	970	979	988
<b>1000</b>	959	968	978	/	/	/
<b>1100</b>	974	984	995	/	/	/
<b>1200</b>	990	1001	1012	/	/	/
<b>1300</b>	1005	1017	1029	/	/	/

<b>DW-L DOUBLE LEAF</b>						
S \ H	2000	2100	2200	2300	2400	2500
<b>1200</b>	1484	1496	1509	1522	1534	1547
<b>1300</b>	1509	1522	1536	1549	1563	1576
<b>1400</b>	1534	1549	1563	1577	1592	1606
<b>1500</b>	1560	1575	1590	1605	1620	1635
<b>1600</b>	1585	1601	1617	1632	1648	1665
<b>1700</b>	1610	1627	1643	1660	1677	1694
<b>1800</b>	1635	1653	1670	1688	1706	1723
<b>1900</b>	1661	1679	1697	1716	1734	1753
<b>2000</b>	1686	1705	1724	/	/	/
<b>2100</b>	1711	1732	1751	/	/	/
<b>2200</b>	1737	1758	1778	/	/	/
<b>2300</b>	1762	1784	1805	/	/	/
<b>2400</b>	1788	1810	1832	/	/	/
<b>2500</b>	1813	1836	1859	/	/	/
<b>2600</b>	1838	1862	1886	/	/	/

### Options:

- door made in colour other than RAL 9010 - surcharge of 60 EUR/m<sup>2</sup>

## SWING DOORS, STAINLESS DW-N T>0 °C

### Characteristic:

- **Door leaf** thickness 25 mm, produced on the press, by high pressure injection of PUR foam into door framework
- **Door finish** - stainless, acid-proof steel, type 1.4301, mat surface 2B or grinded surface 4N (option)
- **Door leaf core** - polyurethane foam, density of minimum 40 kg/m<sup>3</sup>
- **Hinges** - stainless, acid-proof, type 1.4301
- **Window** - round shape, stainless, acid-proof, type 1.4301
- **Buffers** preventing against damages

<b>DW-N SINGLE LEAF</b>						
S \ H	2000	2100	2200	2300	2400	2500
<b>700</b>	1007	1023	1038	1053	1069	1084
<b>800</b>	1039	1056	1072	1089	1106	1123
<b>900</b>	1071	1089	1107	1125	1143	1161
<b>1000</b>	1102	1122	1141	/	/	/
<b>1100</b>	1134	1155	1176	/	/	/
<b>1200</b>	1165	1188	1210	/	/	/
<b>1300</b>	1197	1221	1245	/	/	/

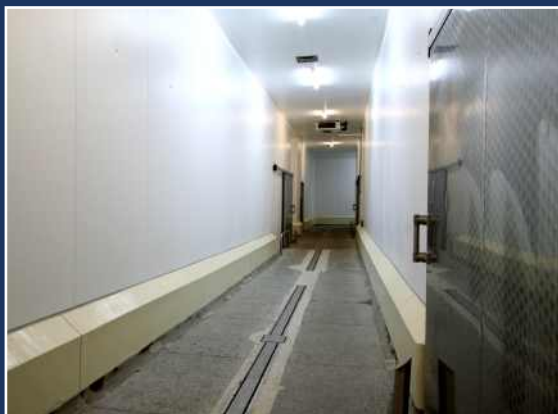
<b>DW-N DOUBLE LEAF</b>						
S \ H	2000	2100	2200	2300	2400	2500
<b>1200</b>	1617	1640	1664	1687	1710	1734
<b>1300</b>	1657	1681	1706	1731	1755	1780
<b>1400</b>	1696	1722	1748	1775	1801	1827
<b>1500</b>	1735	1763	1790	1818	1846	1874
<b>1600</b>	1775	1804	1833	1862	1891	1920
<b>1700</b>	1814	1844	1875	1906	1936	1967
<b>1800</b>	1853	1885	1917	1949	1982	2014
<b>1900</b>	1893	1926	1960	1993	2027	2060
<b>2000</b>	1932	1967	2002	/	/	/
<b>2100</b>	1972	2008	2044	/	/	/
<b>2200</b>	2011	2049	2087	/	/	/
<b>2300</b>	2050	2090	2129	/	/	/
<b>2400</b>	2090	2131	2171	/	/	/
<b>2500</b>	2129	2171	2214	/	/	/
<b>2600</b>	2169	2212	2256	/	/	/







[www.paneltech.pl](http://www.paneltech.pl)



**PanelTECH**<sup>®</sup>