

INDUSTRIAL DOORS

- COLDROOM AND FREEZER DOORS
- GAS-TIGHT SLIDING DOORS
- SWING DOORS
- UNIVERSAL HINGED DOORS



COLDROOM AND FREEZER HINGED DOOR “DR” TYPE



APPLICATION

DR type door are applied in coldrooms and freezers within the temperature range from -40°C to +50°C. The structure of the door ensures its strength and durability. High insulation value has been achieved thanks to polyurethane foam core (PUR).

DOOR LEAF

DR doors are produced in 3 versions. In DRE (ECO) and DRS (STANDARD) version door leaf is made of sandwich panel with PIR core and framed by steel channel section. In DRK (PREMIUM) version door leaf is produced on the press, by high pressure injection of PUR foam into door framework. The density of PUR core is not less than 40 kg/m³.

Available thicknesses:

- 60, 80 mm - coldroom door (single and double leaf)
- 100 mm, 120 mm, 150mm, 160mm - freezer door (single and double leaf)

ECO and STANDARD door leaf finish (sandwich panel):

- Galvanized steel sheet (L) thickness 0,5 mm, coated with polyester paint in white colour RAL 9010

PREMIUM door leaf finish:

- Stainless, acid-proof steel (N), type 1.4301, thickness 0,8 mm, mat surface 2B
- Galvanized steel sheet (L) thickness 0,75 mm, coated with polyester paint in white colour RAL 9010

FRAME TYPE

In DRE and DRS version door frame is filled with PUR foam. It is made of stainless, acid-proof steel (N), type 1.4301, thickness 0,8 mm, mat surface 2B or galvanized steel sheet (L) thickness 0,75 mm, coated with polyester paint in white colour (RAL 9010).

Freezer door frame and threshold are equipped in heating system (heating cable, 230 V, 40 W/rm)

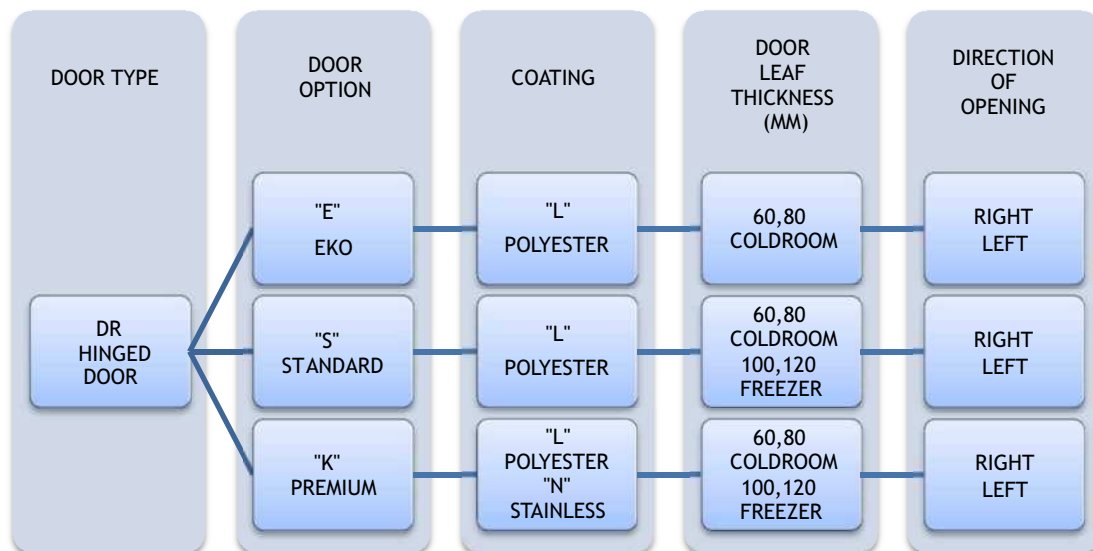
DRE version is equipped in angle bar shaped frame, which is made of galvanized steel sheet (L) thickness 0,75 mm, coated with polyester paint in white colour (RAL 9010).

HINGES

Hinges are delivered by FERMOD. Thanks to door lifting option during opening and closing the hinges prevent the lower gasket from friction.

OPTIONS

- Untypical door leaf finish:
 - Stainless, acid-proof steel (N), type 1.4301, thickness 0,8 mm, grinded surface 4B or grained surface
 - Galvanized steel sheet (L) thickness 0,75 mm, coated with polyester paint other than white RAL 9010
 - panel made of polyester resins reinforced with glass fibre in RAL 9016 with stainless, acid-proof door leaf framing (N), type 1.4301
- Availability to produce door with and without a threshold (lower element is installed in the floor):
- Door windows
 - Round window $\varnothing 280$ mm
 - Window in a different shape and dimension (special enquiry)
 - Execution of opening for a individual glazing
- Door adjusted to top railway system
- Flashing of the door opening



Enquiry/order example:



DRK-L 60 - coldroom hinged door, polyester paint finish, door leaf thickness 60 mm, direction of opening to the right.

HINGED DOORS ECO DRE-L 60 T>0 °C (COLDROOM)

Characteristic:

- Door leaf made of sandwich panel with PIR core 60 mm
- Door finish - galvanized steel sheet coated with polyester paint in white colour RAL 9010
- Door leaf framing - steel channel section, made of steel sheet coated with polyester paint in white colour RAL 9010
- Lock - delivered by FERMOD
- Hinges - delivered by FERMOD
- Frame - angle bar shaped, made of steel sheet coated with polyester paint in RAL 9010

DRE-L 60 SINGLE LEAF								
S \ H	1700	1800	1900	2000	2100	2200	2300	2400
700	469	476	484	491	498	506	513	521
800	472	479	487	494	502	509	516	524
900	475	482	490	497	505	512	519	527
1000	481	489	497	504	512	519	527	534
1100	499	508	515	523	532	539	548	555
1200	546	557	568	579	590	601	612	623
1300	597	611	625	639	652	666	680	694
1400	600	614	628	642	656	670	683	697
1500	603	617	631	645	659	673	686	701

DRE-L 60 DOUBLE LEAF						
S \ H	2000	2100	2200	2300	2400	2500
1400	881	895	910	924	938	953
1600	887	901	916	930	944	958
1800	893	908	922	936	950	965
2000	906	921	936	950	965	980
2200	920	935	950	965	980	995
2400	1029	1049	1069	1090	1110	1130
2600	1139	1164	1190	1215	1240	1266

STANDARD HINGED DOOR - POLYESTER DRS-L 60 T>0 ° C (COLDROOM)

Characteristic:

- Door leaf made of sandwich panel with PIR core 60 mm
- Door finish - galvanized steel sheet coated with polyester paint in white colour RAL 9010
- Door leaf framing - steel channel section, made of steel sheet coated with polyester paint in white colour RAL 9010
- Lock - delivered by FERMOD
- Hinges - delivered by FERMOD
- Frame - complex and profiled, made of steel sheet coated with polyester paint in RAL 9010
- Lower element - channel section made of stainless, acid-proof steel sheet, type 1.4301

DRS-L 60 SINGLE LEAF									
S \ H	1700	1800	1900	2000	2100	2200	2300	2400	2500
700	565	573	582	590	598	630	663	695	727
800	581	590	599	607	616	651	685	720	754
900	597	606	616	625	634	671	708	745	781
1000	613	623	633	643	653	691	731	769	808
1100	662	673	685	696	707	751	794	837	881
1200	688	700	713	725	738	786	834	882	929
1300	705	718	732	745	758	808	859	909	959
1400	723	737	750	764	778	831	884	937	989
1500	740	755	769	784	798	853	909	964	1 019

DRS-L 80 DOUBLE LEAF						
S \ H	2000	2100	2200	2300	2400	2500
1400	1 025	1 039	1 053	1 067	1 081	1 095
1600	1 061	1 076	1 091	1 106	1 122	1 137
1800	1 096	1 113	1 129	1 145	1 162	1 178
2000	1 132	1 149	1 167	1 184	1 202	1 220
2200	1 167	1 186	1 205	1 223	1 242	1 261
2400	1 203	1 223	1 243	1 263	1 283	1 303
2600	1 238	1 260	1 281	1 302	1 323	1 344

Options:

- door leaf made of PIR sandwich panel thickness 80 mm - surcharge of 15 EUR/m²
- window, size 400 mm x 600 mm - surcharge of 105 EUR

PREMIUM HINGED DOORS - POLYESTER DRK-L 60 T>0 ° C (COLDROOM)

Characteristic:

- Door leaf thickness 60 mm, produced on the press, by high pressure injection of PUR foam into door framework
- Door finish - galvanized steel sheet coated with polyester paint in white colour RAL 9010
- Door leaf core - polyurethane foam, density of minimum 40 kg/m³
- Lock - delivered by FERMOD
- Hinges - delivered by FERMOD
- Frame - complex and profiled, made of steel sheet coated with polyester paint in RAL 9010
- Lower element - channel section made of stainless, acid-proof steel sheet, type 1.4301

DRK-L 60 SINGLE LEAF									
S \ H	1700	1800	1900	2000	2100	2200	2300	2400	2500
700	598	612	626	640	653	667	680	694	708
800	615	624	633	643	660	677	695	712	729
900	631	641	651	661	679	697	715	733	751
1000	674	679	684	689	743	752	761	770	779
1100	737	749	760	772	784	795	807	818	830
1200	742	753	765	777	788	811	820	830	839
1300	774	788	802	816	830	844	856	867	878
1400	791	804	818	832	845	859	869	934	945
1500	822	837	852	866	881	896	931	1000	1013

DRK-L 80 DOUBLE LEAF						
S \ H	2000	2100	2200	2300	2400	2500
1400	1096	1110	1123	1136	1149	1162
1500	1108	1126	1144	1162	1180	1198
1600	1119	1142	1165	1188	1210	1234
1700	1141	1163	1189	1216	1242	1269
1800	1164	1185	1214	1244	1274	1304
1900	1186	1206	1239	1273	1306	1340
2000	1209	1227	1264	1301	1338	1375
2100	1216	1248	1284	1319	1354	1411
2200	1222	1270	1303	1337	1370	1477
2300	1226	1290	1348	1355	1386	1544
2400	1229	1311	1393	1413	1445	1611
2500	1233	1332	1438	1472	1506	1680

Options:

- door leaf thickness 80 mm - surcharge of 30 EUR/m²
- window, size 400 mm x 600 mm - surcharge of 105 EUR
- door made in colour other than RAL 9010 - surcharge of 60 EUR/m²

PREMIUM HINGED DOORS - STAINLESS DRK-N 60 T>0 °C (COLDROOM)

Characteristic:

- Door leaf thickness 60 mm, produced on the press, by high pressure injection of PUR foam into door framework
- Door finish - stainless, acid-proof steel, type 1.4301, mat surface 2B or grinded surface 4N (option)
- Door leaf core - polyurethane foam, density of minimum 40 kg/m³
- Lock - delivered by FERMOD
- Hinges - delivered by FERMOD
- Frame - complex and profiled, made of stainless, acid-proof mat surface 2B or grinded surface 4N (option)
- Lower element - channel section made of stainless, acid-proof steel sheet, type 1.4301

DRK-N 60 SINGLE LEAF									
S \ H	1700	1800	1900	2000	2100	2200	2300	2400	2500
700	747	749	768	787	807	826	845	864	881
800	774	793	812	831	849	867	884	902	920
900	801	821	841	860	880	899	919	939	958
1000	837	861	884	907	928	947	966	985	1004
1100	890	913	935	958	980	1003	1025	1048	1071
1200	900	928	956	984	1012	1036	1056	1075	1095
1300	947	975	1002	1030	1058	1085	1110	1135	1159
1400	983	1010	1038	1065	1093	1120	1140	1221	1248
1500	1019	1046	1073	1100	1128	1155	1220	1309	1337

DRK-N 80 DOUBLE LEAF						
S \ H	2000	2100	2200	2300	2400	2500
1400	1287	1327	1366	1406	1445	1484
1500	1309	1348	1387	1426	1465	1505
1600	1330	1369	1408	1447	1486	1525
1700	1371	1405	1445	1485	1526	1566
1800	1413	1441	1482	1524	1565	1606
1900	1455	1478	1520	1562	1605	1647
2000	1497	1514	1557	1601	1645	1688
2100	1539	1550	1577	1621	1664	1729
2200	1581	1586	1597	1641	1684	1811
2300	1602	1627	1654	1660	1704	1893
2400	1623	1667	1710	1732	1777	1976
2500	1644	1707	1767	1804	1851	2057

Options:

- door leaf thickness 80 mm - surcharge of 30 EUR/m²
- window, size 400 mm x 600 mm - surcharge of 105 EUR

STANDARD HINGED DOOR - POLYESTER DRS-L 100 T>-25 °C (FREEZER)

Characteristic:

- **Door leaf** made of sandwich panel with PIR core 100 mm
- **Door finish** - galvanized steel sheet coated with polyester paint in white colour RAL 9010
- **Door leaf framing** - steel channel section, made of steel sheet coated with polyester paint in white colour RAL 9010
- **Lock** - delivered by FERMOD
- **Hinges** - delivered by FERMOD
- **Frame** - complex and profiled, made of steel sheet coated with polyester paint in RAL 9010
- **Lower element** - channel section made of stainless, acid-proof steel sheet, type 1.4301

DRS-L 100 SINGLE LEAF										
S	H	1700	1800	1900	2000	2100	2200	2300	2400	2500
700		724	735	745	756	766	792	819	846	872
800		746	760	774	788	802	823	844	865	886
900		766	784	802	820	838	854	869	884	900
1000		788	803	818	834	849	870	890	911	932
1100		813	826	839	852	866	893	919	946	973
1200		821	839	856	873	890	913	936	958	982
1300		830	851	872	893	914	939	964	990	1031
1400		865	887	909	931	952	971	991	1032	1111
1500		899	923	945	968	991	1001	1047	1093	1137

Options:

- door leaf made of PIR sandwich panel thickness 120 mm - surcharge of 15 EUR/m²
- door leaf made of PIR sandwich panel thickness 160 mm - surcharge of 40 EUR/m²
- window, size 400 mm x 600 mm - surcharge of 105 EUR

PREMIUM HINGED DOORS - POLYESTER DRK-L 100 T>-25 °C (FREEZER)

Characteristic:

- **Door leaf** thickness 100 mm, produced on the press, by high pressure injection of PUR foam into door framework
- **Door finish** - galvanized steel sheet coated with polyester paint in white colour RAL 9010
- **Door leaf core** - polyurethane foam, density of minimum 40 kg/m³
- **Lock** - delivered by FERMOD
- **Hinges** - delivered by FERMOD
- **Frame** - complex and profiled, made of steel sheet coated with polyester paint in RAL 9010
- **Lower element** - channel section made of stainless, acid-proof steel sheet, type 1.4301

DRK-L 100 SINGLE LEAF										
S	H	1700	1800	1900	2000	2100	2200	2300	2400	2500
700		786	800	814	827	841	854	868	882	895
800		811	826	841	855	870	885	899	914	929
900		836	852	867	883	899	915	930	946	962
1000		876	897	918	938	984	1004	1012	1012	1013
1100		882	899	915	932	973	974	987	1006	1026
1200		920	941	962	982	1003	1021	1039	1057	1075
1300		948	968	989	1009	1029	1050	1064	1077	1099
1400		975	996	1017	1037	1058	1079	1092	1136	1183
1500		1002	1023	1044	1066	1087	1108	1150	1200	1250

Options:

- door leaf thickness 120 mm - surcharge of 30 EUR/m²
- door leaf made of PIR sandwich panel thickness 150 mm - surcharge of 60 EUR/m²
- window, size 400 mm x 600 mm - surcharge of 105 EUR
- door made in colour other than RAL 9010 - surcharge of 60 EUR/m²

PREMIUM HINGED DOORS - STAINLESS DRK-N 100 T>-25 °C (FREEZER)

Characteristic:

- **Door leaf** thickness 100 mm, produced on the press, by high pressure injection of PUR foam into door framework
- **Door finish** - stainless, acid-proof steel, type 1.4301, mat surface 2B or grinded surface 4N (option)
- **Door leaf core** - polyurethane foam, density of minimum 40 kg/m³
- **Lock** - delivered by FERMOD
- **Hinges** - delivered by FERMOD
- **Frame** - complex and profiled, made of stainless, acid-proof mat surface 2B or grinded surface 4N (option)
- **Lower element** - channel section made of stainless, acid-proof steel sheet, type 1.4301

DRK-N 100 SINGLE LEAF										
S	H	1700	1800	1900	2000	2100	2200	2300	2400	2500
700		885	907	930	952	974	997	1019	1041	1064
800		919	942	965	988	1013	1037	1062	1086	1111
900		953	978	1002	1028	1054	1080	1106	1132	1158
1000		1005	1034	1062	1091	1117	1148	1178	1209	1240
1100		1024	1048	1073	1097	1122	1161	1201	1240	1280
1200		1054	1081	1108	1136	1163	1190	1238	1286	1333
1300		1087	1116	1144	1173	1202	1231	1257	1287	1338
1400		1120	1151	1181	1211	1241	1271	1323	1374	1433
1500		1153	1185	1217	1248	1280	1312	1364	1423	1482

Options:

- door leaf thickness 120 mm - surcharge of 30 EUR/m²
- door leaf made of PIR sandwich panel thickness 150 mm - surcharge of 60 EUR/m²
- window, size 400 mm x 600 mm - surcharge of 105 EUR

PREMIUM HINGED FLUSH DOORS - POLYESTER DRKZ-L 80 T>0°C (COLDROOM)

Characteristic:

- Door leaf thickness 80 mm, produced on the press, by high pressure injection of PUR foam into door framework;
- Door finish - steel channel section, made of steel sheet coated with polyester paint in white colour RAL 9010
- Door leaf core - polyurethane foam, density of minimum min. 40 kg/m³
- Lock - delivered by FERMOD
- Hinges - delivered by FERMOD/RAHRBACH
- The frame flush with the external wall surface - complex and profiled, made of steel sheet coated with polyester paint in RAL 9010
- Lower element- channel section made of stainless, acid-proof steel sheet, type 1.4301

DRKZ-L 80 SINGLE LEAF									
S \ H	1700	1800	1900	2000	2100	2200	2300	2400	2500
700	771	788	805	823	840	858	876	894	912
800	792	804	816	828	850	873	895	917	940
900	815	828	840	852	879	901	924	946	968
1000	873	880	887	894	959	971	983	995	1006
1100	939	954	968	983	998	1014	1028	1043	1057
1200	946	961	977	992	1007	1034	1047	1075	1100
1300	976	994	1011	1029	1046	1064	1078	1107	1143

DRKZ-L 80 DOUBLE LEAF						
S \ H	2000	2100	2200	2300	2400	2500
1400	1189	1203	1218	1232	1246	1260
1500	1201	1221	1240	1260	1280	1299
1600	1213	1238	1263	1288	1313	1338
1700	1238	1261	1290	1319	1347	1376
1800	1262	1285	1317	1350	1382	1415
1900	1286	1308	1344	1380	1417	1453
2000	1311	1331	1371	1411	1451	1492
2100	1318	1354	1392	1430	1469	1530
2200	1325	1377	1413	1450	1486	1555
2300	1329	1399	1462	1469	1503	1581
2400	1333	1422	1511	1544	1577	1650
2500	1337	1444	1520	1581	1650	1719

Options:

- window, size 400 mm x 600 mm - surcharge of 105 EUR
- door made in colour other than RAL 9010 - surcharge of 60 EUR/m²

PREMIUM HINGED FLUSH DOORS - STAINLESS DRKZ-N 80 T>0°C (COLDROOM)

Characteristic:

- **Door leaf** thickness 80 mm, produced on the press, by high pressure injection of PUR foam into door framework;
- **Door finish** - stainless, acid-proof steel, type 1.4301, mat surface 2B or grinded surface 4N (option)
- **Door leaf core** - polyurethane foam, density of minimum min. 40 kg/m³
- **Lock** - delivered by FERMOD
- **Hinges** - delivered by FERMOD/RAHRBACH
- **The frame flush with the external wall surface** - complex and profiled, made of stainless, acid-proof mat surface 2B or grinded surface 4N (option)
- **Lower element**- channel section made of stainless, acid-proof steel sheet, type 1.4301

DRKZ-N 80 SINGLE LEAF									
S \ H	1700	1800	1900	2000	2100	2200	2300	2400	2500
700	895	898	921	944	968	991	1014	1037	1057
800	928	951	974	997	1018	1039	1060	1082	1103
900	961	984	1008	1031	1055	1079	1102	1126	1149
1000	1004	1032	1060	1088	1113	1136	1159	1182	1204
1100	1033	1060	1086	1112	1138	1164	1190	1217	1243
1200	1065	1098	1131	1164	1198	1225	1249	1272	1296
1300	1120	1153	1186	1218	1251	1284	1313	1357	1393

DRKZ-N 80 DOUBLE LEAF						
S \ H	2000	2100	2200	2300	2400	2500
1400	1419	1463	1506	1550	1593	1636
1500	1442	1486	1529	1572	1615	1659
1600	1466	1509	1552	1595	1638	1681
1700	1512	1549	1593	1637	1682	1726
1800	1558	1589	1634	1680	1725	1771
1900	1563	1587	1632	1678	1723	1769
2000	1608	1626	1672	1719	1766	1813
2100	1653	1665	1694	1741	1787	1857
2200	1698	1704	1715	1762	1808	1886
2300	1721	1747	1776	1783	1830	1971
2400	1743	1790	1837	1892	1975	2295
2500	1766	1833	1898	1971	2057	2143

Options:

- window, size 400 mm x 600 mm - surcharge of 105 EUR

PREMIUM HINGED FLUSH DOORS - POLYESTER DRKZ-L 100 T>-25°C (FREEZER)

Characteristic:

- **Door leaf** thickness 100 mm, produced on the press, by high pressure injection of PUR foam into door framework;
- **Door finish** - steel channel section, made of steel sheet coated with polyester paint in white colour RAL 9010
- **Door leaf core** - polyurethane foam, density of minimum min. 40 kg/m³
- **Lock** - delivered by FERMOD
- **Hinges** - delivered by FERMOD/RAHRBACH
- **the frame flush with the external wall surface** - complex and profiled, made of steel sheet coated with polyester paint in RAL 9010
- **Lower element**- channel section made of stainless, acid-proof steel sheet, type 1.4301

DRKZ-L 100 SINGLE LEAF									
S \ H	1700	1800	1900	2000	2100	2200	2300	2400	2500
700	866	881	896	911	926	941	956	971	986
800	893	909	925	942	958	974	990	1006	1022
900	920	938	955	972	990	1007	1024	1042	1059
1000	964	987	1010	1033	1084	1106	1114	1115	1115
1100	1008	1027	1046	1065	1112	1113	1128	1150	1172
1200	1052	1075	1099	1122	1146	1167	1188	1208	1229
1300	1083	1106	1130	1153	1176	1200	1215	1268	1321

Options:

- window, size 400 mm x 600 mm - surcharge of 105 EUR
- door made in colour other than RAL 9010 - surcharge of 60 EUR/m²

PREMIUM HINGED FLUSH DOORS - STAINLESS DRKZ-N 100 T>-25°C (FREEZER)

Characteristic:

- **Door leaf** thickness 100 mm, produced on the press, by high pressure injection of PUR foam into door framework;
- **Door finish** - stainless, acid-proof steel, type 1.4301, mat surface 2B or grinded surface 4N (option)
- **Door leaf core** - polyurethane foam, density of minimum min. 40 kg/m³
- **Lock** - delivered by FERMOD
- **Hinges** - delivered by FERMOD/RAHRBACH
- **The frame flush with the external wall surface** - made of stainless, acid-proof mat surface 2B or grinded surface 4N (option)
- **Lower element** - channel section made of stainless, acid-proof steel sheet, type 1.4301

DRKZ-N 100 SINGLE LEAF									
S \ H	1700	1800	1900	2000	2100	2200	2300	2400	2500
700	1038	1064	1090	1117	1143	1169	1195	1222	1248
800	1078	1105	1132	1159	1188	1217	1245	1274	1303
900	1117	1147	1176	1205	1236	1267	1297	1328	1358
1000	1178	1212	1246	1280	1310	1346	1382	1418	1454
1100	1189	1218	1247	1275	1304	1350	1395	1441	1487
1200	1248	1280	1313	1345	1377	1410	1466	1522	1579
1300	1287	1321	1355	1389	1424	1457	1488		

Options:

- door leaf thickness 120 mm - surcharge of 30 EUR/m²
- window, size 400 mm x 600 mm - surcharge of 105 EUR



COLDROOM AND FREEZER SLIDING DOORS, “DP” TYPE

APPLICATION

DP doors are applied in coldrooms and freezers within the temperature from -40°C to $+50^{\circ}\text{C}$. The structure of the door ensures its strength and durability. High insulation value has been achieved thanks to polyurethane foam core (PUR).

DP - lightweight, up to 120 kg

DP - heavyweight, up to 400 kg

DOOR LEAF

DP doors are available in 2 versions: In DPS (STANDARD) version door leaf is made of sandwich panel with PIR core and framed by steel channel section. In DPK (PREMIUM) version door leaf is produced on the press, by high pressure injection of PUR foam into door framework. The density of PUR core is not less than $40\text{kg}/\text{m}^3$.

Available thicknesses:

- 60, 80 mm - coldroom door (single and double leaf)
- 100, 120, 150, 160mm - freezer door (single leaf)

STANDARD door leaf finish (sandwich panel):

- Galvanized steel sheet (L) thickness 0,5 mm, coated with polyester paint in white colour RAL 9010

PREMIUM door leaf finish:

- Stainless, acid-proof steel (N), type 1.4301, thickness 0,8 mm, mat surface 2B
- Galvanized steel sheet (L) thickness 0,75 mm, coated with polyester paint in white colour RAL 9010

Door leaf is equipped with gasket delivered by FERMOD (F).

FRAME TYPE

In both DPS and DPK version door frame is filled with PUR foam. It is made of stainless, acid-proof steel (N), type 1.4301, thickness 1,5 mm, mat surface 2B or galvanized steel sheet (L) thickness 1,5 mm, coated with polyester paint in white colour (RAL 9010).

Freezer door frame and threshold are equipped in heating system (heating cable, 230 V, 40 W/rm).

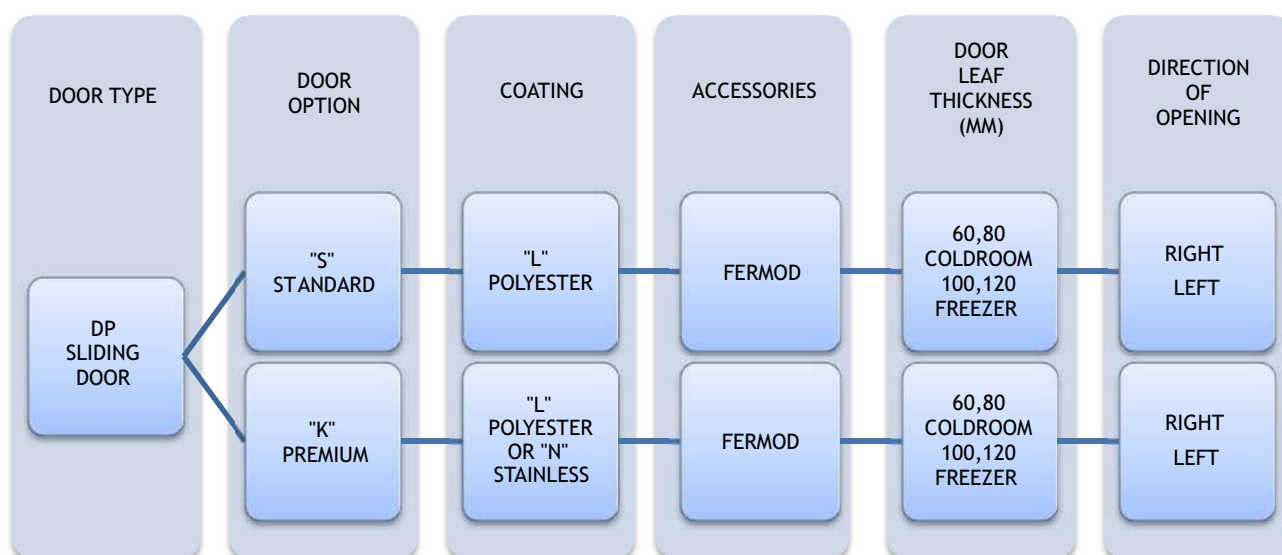
Lock is delivered by FERMOD (F). It is equipped with patent insert with possibility of emergency opening from the inside even if the door is locked.

SUSPENSION SYSTEM

- FERMOD suspension system (F), aluminium rail - lightweight type
- FERMOD suspension system (F), galvanized steel or stainless steel rail - heavyweight type

OPTIONS

- Untypical door leaf finish:
 - Stainless, acid-proof steel (N), type 1.4301, thickness 0,8 mm, grinded surface 4B or grained surface
 - Galvanized steel sheet (T) thickness 0,75 mm, coated with polyester paint other than white
 - panel made of polyester resins reinforced with glass fibre in RAL 9016 with stainless, acid-proof door leaf framing (N), type 1.4301
- Availability to produce door with and without a threshold (lower element is installed in the floor)
- Flashing of the door opening
- Application of automatic kits delivered by FERMOD (F)
- Door windows:
 - Round window $\varnothing 280$ mm
 - Window in a different shape (special enquiry)
- Door adjusted to top railway system



Enquiry/order example:



DPK-NF 60 - Premium coldroom sliding door, stainless steel finish, FERMOD accessories, door leaf thickness 60 mm, direction of opening to the right.

STANDARD SLIDING DOOR - POLYESTER - FERMOD ACCESSORIES - DPS-LF 60 T>0 °C (COLDROOM)

Characteristic:

- Door leaf made of sandwich panel with PIR core 60 mm
- Door finish - galvanized steel sheet, coated with polyester paint in white colour RAL 9010
- Door leaf framing - steel channel section, made of stainless, acid-proof steel sheet, type 1.4301
- Frame - complex and profiled, made of steel sheet coated with polyester paint in RAL 9010
- Accessories - delivered by FERMOD, made of aluminium
- Lower element - channel section made of stainless, acid-proof steel sheet, type 1.4301

DPS-LF 60 SINGLE LEAF								
S \ H	1800	1900	2000	2100	2200	2300	2400	2500
800	1218	1226	1235	1244	1253	1262	1271	1280
900	1234	1244	1254	1264	1274	1284	1294	1303
1000	1252	1263	1273	1284	1294	1305	1316	1326
1100	1336	1347	1359	1370	1381	1392	1403	1414
1200	1378	1391	1403	1415	1427	1439	1451	1463
1300	1443	1457	1470	1483	1496	1510	1523	1536
1400	1479	1493	1507	1521	1535	1550	1563	1577
1500	1516	1531	1546	1561	1576	1590	1605	1620
1600	1553	1569	1584	1600	1616	1632	1647	1663
1700	1661	1677	1693	1710	1725	1742	1757	1774
1800	1678	1695	1712	1729	1746	1763	1779	1796
1900	1721	1739	1757	1774	1788	1801	1815	1829
2000	1764	1783	1801	1820	1838	1857	1875	1894

S \ H	2500	2600	2700	2800	3000	3200	3400	3600	3800	4000
1500	1620	1624	1629	1641	1660	1769	1801	1832	1863	1894
1600	1663	1702	1726	1737	1757	1872	1905	1937	1969	2001
1700	1774	1790	1811	1832	1854	1975	2009	2042	2076	2109
1800	1796	1813	1836	1858	1880	2004	2040	2075	2111	2146
1900	1829	1836	1860	1884	1907	2034	2071	2108	2145	2182
2000	1894	1912	1937	1962	1988	2120	2159	2198	2236	2275
2200	1941	1966	1991	2016	2041	2179	2221	2263	2306	2765
2400	2040	2074	2108	2142	2176	2315	2350	2386	2873	2921
2600	2189	2219	2250	2280	2311	2393	2475	2983	3030	3077
2800	2359	2395	2432	2469	2505	2542	2996	3057	3118	3179
3000	2443	2478	2513	2548	2582	3066	3120	3174	3227	3281

Prices in bold refer to doors with heavy system

Options:

- door leaf made of PIR sandwich panel thickness 80 mm - surcharge of 15 EUR/m²
- window, size 400 mm x 600 mm - surcharge of 105 EUR
- lock with patent insert with possibility of opening from the inside - surcharge of 160 EUR
- handle support (lever) for light-weight door - surcharge of 160 EUR (in heavy-weight door this option is included free of charge)

STANDARD SLIDING DOOR - POLYESTER - FERMOD ACCESSORIES - DPS-LF 100 T> -25°C (FREEZER)

Characteristic:

- Door leaf made of sandwich panel with PIR core 100 mm
- Door finish - galvanized steel sheet, coated with polyester paint in white colour RAL 9010
- Door leaf framing - steel channel section, made of stainless, acid-proof steel sheet, type 1.4301
- Frame - complex and profiled, made of steel sheet coated with polyester paint in RAL 9010
- Accessories - delivered by FERMOD, made of aluminium
- Lower element - channel section made of stainless, acid-proof steel sheet, type 1.4301

DPS-LF 100 SINGLE LEAF								
S \ H	1800	1900	2000	2100	2200	2300	2400	2500
800	1371	1385	1399	1412	1424	1436	1447	1459
900	1392	1406	1420	1434	1447	1460	1473	1486
1000	1412	1426	1441	1456	1470	1484	1499	1513
1100	1502	1529	1538	1546	1561	1576	1591	1605
1200	1550	1566	1582	1598	1614	1630	1646	1662
1300	1622	1633	1643	1654	1676	1699	1721	1744
1400	1662	1680	1699	1717	1735	1753	1771	1789
1500	1701	1720	1739	1758	1778	1797	1816	1835
1600	1740	1760	1780	1800	1820	1840	1860	1880
1700	1847	1867	1888	1908	1928	1948	1969	1989
1800	1867	1888	1909	1930	1952	1973	1994	2015
1900	1914	1936	1959	1980	2002	2025	2047	2069
2000	1962	1985	2008	2031	2054	2077	2100	2123

S \ H	2500	2600	2700	2800	3000	3200	3400	3600	3800	4000
1500	1835	1844	1854	1862	1887	2015	2054	2092	2131	2170
1600	1880	1908	1935	1963	1989	2123	2164	2205	2245	2286
1700	1989	2009	2036	2063	2090	2232	2274	2317	2360	2402
1800	2015	2039	2067	2094	2121	2266	2310	2355	2399	2443
1900	2069	2063	2093	2122	2152	2300	2346	2392	2439	2485
2000	2123	2146	2176	2207	2238	2362	2381	2400	2479	2503
2200	2175	2206	2237	2268	2299	2435	2463	2491	2519	3093
2400	2281	2315	2348	2381	2414	2528	2612	2695	3198	3257
2600	2516	2554	2591	2629	2666	2725	2785	3307	3365	3422
2800	2589	2633	2678	2722	2766	2810	3320	3391	3463	3534
3000	2736	2764	2792	2848	2904	3387	3452	3517	3581	3646

Prices in bold refer to doors with heavy system

Options:

- door leaf made of PIR sandwich panel thickness 120 mm - surcharge of 15 EUR/m²
- door leaf made of PIR sandwich panel thickness 160 mm - surcharge of 40 EUR/m²
- window, size 400 mm x 600 mm - surcharge of 105 EUR
- lock with patent insert with possibility of opening from the inside - surcharge of 160 EUR
- handle support (lever) for light-weight door - surcharge of 160 EUR (in heavy-weight door this option is included free of charge)

PREMIUM SLIDING DOOR - POLYESTER - FERMOD ACCESSORIES - DPK-LF 60 T>0 °C (COLDROOM)

Characteristic:

- Door leaf thickness 60 mm, produced on the press, by high pressure injection of PUR foam into door framework
- Door finish - galvanized steel sheet coated with polyester paint in white colour RAL 9010
- Door leaf core - polyurethane foam, density of minimum 40 kg/m³
- Frame - complex and profiled, made of steel sheet coated with polyester paint in RAL 9010
- Accessories - delivered by FERMOD, made of aluminium
- Lower element - channel section made of stainless, acid-proof steel sheet, type 1.4301

DPK-LF 60 SINGLE LEAF								
S \ H	1800	1900	2000	2100	2200	2300	2400	2500
800	1296	1304	1312	1321	1329	1337	1346	1354
900	1312	1321	1330	1339	1348	1357	1366	1375
1000	1328	1338	1348	1357	1367	1377	1387	1397
1100	1378	1389	1400	1410	1421	1432	1442	1453
1200	1428	1440	1452	1463	1475	1486	1498	1510
1300	1516	1529	1541	1554	1566	1579	1591	1604
1400	1552	1557	1561	1566	1571	1595	1619	1643
1500	1587	1602	1617	1633	1648	1663	1678	1694
1600	1621	1636	1650	1665	1679	1705	1730	1744
1700	1745	1762	1779	1796	1813	1829	1846	1863
1800	1870	1886	1902	1918	1934	1950	1966	1982
1900	1913	1930	1946	1963	1980	1996	2013	2030
2000	1956	1976	1997	2017	2037	2058	2078	2214

S \ H	2500	2600	2700	2800	3000
1500	1694	1709	1758	1806	1855
1600	1744	1795	1812	1846	1879
1700	1863	1967	2003	2065	2364
1800	1982	2054	2126	2270	2382
1900	2030	2308	2361	2389	2417
2000	2214	2367	2414	2450	2487
2200	2384	2425	2466	2512	2558
2400	2670	2738	2806	2813	2820

Prices in bold refer to doors with heavy system

Options:

- door leaf thickness 80 mm - surcharge of 30 EUR/m²
- window, size 400 mm x 600 mm - surcharge of 105 EUR
- lock with patent insert with possibility of opening from the inside - surcharge of 160 EUR
- door made in colour other than RAL 9010 - surcharge of 60 EUR/m²
- handle support (lever) for light-weight door - surcharge of 160 EUR (in heavy-weight door this option is included free of charge)

PREMIUM SLIDING DOOR - POLYESTER - FERMOD ACCESSORIES - DPK-LF 100 T>-25°C (FREEZER)

Characteristic:

- Door leaf thickness 100 mm, produced on the press, by high pressure injection of PUR foam into door framework
- Door finish - galvanized steel sheet coated with polyester paint in white colour RAL 9010
- Door leaf core - polyurethane foam, density of minimum 40 kg/m³
- Frame - complex and profiled, made of steel sheet coated with polyester paint in RAL 9010
- Accessories - delivered by FERMOD, made of aluminium
- Lower element - channel section made of stainless, acid-proof steel sheet, type 1.4301

DPK-LF 100 SINGLE LEAF								
S \ H	1800	1900	2000	2100	2200	2300	2400	2500
800	1470	1482	1494	1507	1519	1532	1544	1557
900	1509	1522	1535	1548	1562	1575	1588	1602
1000	1548	1562	1576	1590	1604	1619	1632	1647
1100	1567	1581	1596	1611	1626	1641	1656	1670
1200	1585	1601	1616	1632	1648	1663	1679	1694
1300	1706	1725	1743	1761	1780	1798	1816	1835
1400	1799	1820	1841	1862	1883	1904	1925	1945
1500	1827	1847	1868	1889	1910	1931	1952	1972
1600	1854	1875	1896	1916	1937	1958	1979	1999
1700	1881	1902	1923	1944	1964	1985	2006	2026
1800	1961	1983	2004	2024	2046	2067	2087	2109
1900	2008	2032	2055	2078	2101	2124	2147	2170
2000	2055	2073	2091	2126	2161	2197	2232	2361

S \ H	2500	2600	2700	2800	3000
1500	1945	1954	1963	1972	2017
1600	1977	1979	1980	2005	2029
1700	2026	2059	2092	2098	2568
1800	2109	2138	2167	2606	2615
1900	2170	2557	2588	2618	2648
2000	2361	2658	2690	2723	2755
2200	2724	2758	2793	2827	2862
2400	2971	3009	3048	3086	3125

Prices in bold refer to doors with heavy system

Options:

- door leaf thickness 120 mm - surcharge of 30 EUR/m²
- door leaf thickness 150 mm - surcharge of 60 EUR/m²
- window, size 400 mm x 600 mm - surcharge of 105 EUR
- lock with patent insert with possibility of opening from the inside - surcharge of 160 EUR
- door made in colour other than RAL 9010 - surcharge of 60 EUR/m²
- handle support (lever) for light-weight door - surcharge of 160 EUR (in heavy-weight door this option is included free of charge)

PREMIUM SLIDING DOOR - STAINLESS - FERMOD ACCESSORIES - DPK-NF 60 T>0 °C (COLDROOM)

Characteristic:

- **Door leaf thickness** 60 mm, produced on the press, by high pressure injection of PUR foam into door framework
- **Door finish** - stainless, acid-proof steel, type 1.4301, mat surface 2B or grinded surface 4N (option)
- **Door leaf core** - polyurethane foam, density of minimum 40 kg/m³
- **Frame** - complex and profiled, made of stainless, acid-proof steel, type 1.4301, mat surface 2B or grinded surface 4N (option)
- **Accessories** - delivered by FERMOD, made of aluminium
- **Lower element** - channel section made of stainless, acid-proof steel sheet, type 1.4301

DPK-NF 60 SINGLE LEAF								
S \ H	1800	1900	2000	2100	2200	2300	2400	2500
800	1369	1384	1400	1416	1432	1447	1463	1478
900	1395	1412	1429	1446	1463	1480	1497	1514
1000	1422	1450	1477	1491	1506	1520	1534	1548
1100	1476	1495	1515	1534	1553	1572	1591	1611
1200	1530	1551	1571	1591	1612	1632	1652	1673
1300	1576	1597	1619	1641	1662	1684	1705	1727
1400	1622	1644	1667	1690	1712	1735	1758	1780
1500	1674	1698	1721	1745	1769	1793	1817	1841
1600	1726	1746	1766	1787	1807	1841	1876	1901
1700	1838	1864	1890	1917	1943	1969	1995	2022
1800	1950	1978	2005	2033	2060	2087	2115	2142
1900	2000	2029	2057	2086	2115	2143	2172	2200
2000	2050	2085	2119	2154	2189	2224	2258	2379

S \ H	2500	2600	2700	2800	3000
1500	1841	1854	1921	1987	2053
1600	1901	1946	1991	2037	2082
1700	2022	2081	2139	2168	2484
1800	2142	2170	2197	2506	2528
1900	2200	2553	2596	2628	2662
2000	2379	2648	2703	2750	2796
2200	2676	2701	2810	2839	2974
2400	3015	3118	3220	3233	3246

Prices in bold refer to doors with heavy system

Options:

- door leaf thickness 80 mm - surcharge of 30 EUR/m²
- window, size 400 mm x 600 mm - surcharge of 105 EUR
- lock with patent insert with possibility of opening from the inside - surcharge of 216 EUR
- handle support (lever) for light-weight door - surcharge of 160 EUR (in heavy-weight door this option is included free of charge)

PREMIUM SLIDING DOOR - STAINLESS - FERMOD ACCESSORIES - DPK-NF 100 T>-25 °C (FREEZER)

Characteristic:

- Door leaf thickness 100 mm, produced on the press, by high pressure injection of PUR foam into door framework
- Door finish - stainless, acid-proof steel, type 1.4301, mat surface 2B or grinded surface 4N (option)
- Door leaf core - polyurethane foam, density of minimum 40 kg/m³
- Heated frame - complex and profiled, made of stainless, acid-proof steel, type 1.4301, mat surface 2B or grinded surface 4N (option)
- Accessories - delivered by FERMOD, made of aluminium
- Lower element - channel section made of stainless, acid-proof steel sheet, type 1.4301

DPK-NF 100 SINGLE LEAF								
S \ H	1800	1900	2000	2100	2200	2300	2400	2500
800	1664	1686	1707	1729	1750	1772	1793	1815
900	1715	1738	1761	1784	1807	1830	1853	1876
1000	1767	1791	1815	1840	1864	1888	1913	1937
1100	1802	1828	1854	1879	1905	1931	1956	1982
1200	1838	1865	1892	1919	1946	1973	2000	2027
1300	1925	1955	1985	2014	2044	2073	2103	2133
1400	2013	2045	2077	2109	2141	2173	2206	2238
1500	2038	2069	2101	2132	2163	2194	2225	2256
1600	2064	2096	2129	2162	2194	2227	2260	2292
1700	2163	2197	2231	2265	2299	2333	2367	2401
1800	2262	2298	2333	2368	2404	2439	2475	2510
1900	2322	2358	2395	2432	2469	2506	2542	2579
2000	2381	2426	2470	2515	2559	2604	2648	2774

S \ H	2500	2600	2700	2800	3000
1500	2256	2278	2347	2415	2483
1600	2292	2366	2425	2440	2503
1700	2401	2454	2503	2542	3256
1800	2510	2542	2581	3225	3268
1900	2579	3142	3193	3243	3294
2000	2774	3282	3336	3390	3444
2200	3364	3421	3479	3537	3594
2400	3684	3749	3813	3877	3942

Prices in bold refer to doors with heavy system

Options:

- door leaf thickness 120 mm - surcharge of 30 EUR/m²
- door leaf thickness 150 mm - surcharge of 60 EUR/m²
- window, size 400 mm x 600 mm - surcharge of 105 EUR
- lock with patent insert with possibility of opening from the inside - surcharge of 216 EUR
- handle support (lever) for light-weight door - surcharge of 160 EUR (in heavy-weight door this option is included free of charge)



GAS-TIGHT SLIDING DOORS, “DPG” TYPE

APPLICATION

DPG doors are applied in rooms with controlled atmosphere (KA), which is the best technology to store fruits and vegetables. In standard coldrooms fruits are stored in normal atmosphere containing 21% of oxygen and 0% carbon dioxide. In controlled atmosphere the content of oxygen is below 3% and the content of carbon dioxide is below 5%. This leads to prolongation of fruits and vegetables store period without losing their quality.

DPG - lightweight, up to 120 kg

DPG - heavyweight, up to 400 kg

DOOR LEAF

DP doors are available in 2 versions: In DPSG (STANDARD) version door leaf is made of sandwich panel with PIR core and framed by steel channel section. In DPKG (PREMIUM) version door leaf is produced on the press, by high pressure injection of PUR foam into door framework. The density of PUR core is not less than 40 kg/m³.

Available thicknesses:

- 80 mm

STANDARD door leaf finish (sandwich panel):

- Galvanized steel sheet (L) thickness 0,5 mm, coated with polyester paint in white colour RAL 9010

PREMIUM door leaf finish:

- Stainless, acid-proof steel (N), type 1.4301, thickness 0,8 mm, mat surface 2B
- Galvanized steel sheet (L) thickness 0,75 mm, coated with polyester paint in white colour RAL 9010

Door leaf is equipped with gasket delivered by FERMOD (F), eccentric ball valves one for gas filling of the room, the other in order to take samples from the room atmosphere clamps to ensure door leaf tightness, revision window 528 x 828 mm, closed with a key.

FRAME TYPE

In both DPSG and DPKG version door frame is filled with PUR foam. It is made of stainless, acid-proof steel (N), type 1.4301, thickness 0,8 mm, mat surface 2B or galvanized steel sheet (T) thickness 0,75 mm, coated with polyester paint in white colour (RAL 9010).

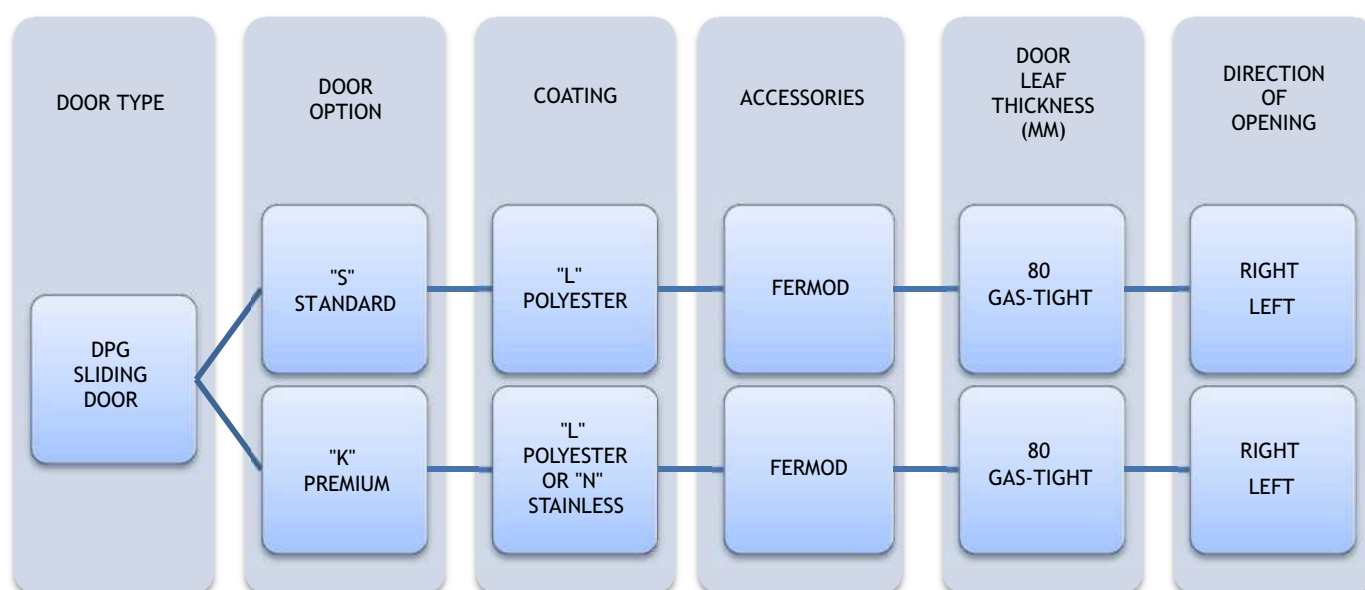
Lock is delivered by RAHRBACH. It is equipped with patent insert with possibility of emergency opening from the inside even if the door is locked.

SUSPENSION SYSTEM

- λ FERMOD suspension system (F), aluminium rail - lightweight type
- λ FERMOD suspension system (F), galvanized steel or stainless steel rail - heavyweight type

OPTIONS

- Untypical door leaf finish:
 - Stainless, acid-proof steel (N), type 1.4301, thickness 0,8 mm, grinded surface 4B or grained surface
 - Galvanized steel sheet (L) coated with polyester paint other than white (RAL 9010)
- Availability to produce door with and without a threshold (lower element is installed in the floor)
- Flashing of the door opening



Enquiry/order example:



DPKG-NF 80 - Premium gas-tight coldroom sliding door, stainless steel finish, FERMOD accessories, door leaf thickness 80 mm, direction of opening to the right.

STANDARD SLIDING DOOR - POLYESTER - FERMOD ACCESSORIES - DPSG-LF 80 T>0 °C (GAS-TIGHT)

Characteristic:

- Door leaf made of sandwich panel with PIR core 80 mm
- Door finish - galvanized steel sheet coated with polyester paint in white colour RAL 9010
- Door leaf framing - steel channel section, made of stainless, acid-proof steel sheet, type 1.4301
- Frame - complex and profiled, made of steel sheet coated with polyester paint in RAL 9010
- Accessories - delivered by FERMOD, made of aluminium
- Lower element - channel section made of stainless, acid-proof steel sheet, type 1.4301
- Eccentric ball valves - one for gas filling of the room, the other in order to take samples from the room atmosphere
- clamps - ensure door leaf tightness
- revision window - dimension of 528 x 828 mm

DPSG-LF 80 SINGLE LEAF								
S \ H	1800	1900	2000	2100	2200	2300	2400	2500
800	2088	2096	2105	2113	2122	2130	2138	2147
900	2104	2113	2123	2132	2141	2150	2159	2168
1000	2120	2130	2140	2150	2160	2170	2180	2190
1100	2240	2250	2261	2272	2282	2293	2304	2315
1200	2298	2310	2321	2333	2345	2356	2368	2380
1300	2331	2344	2356	2369	2381	2394	2406	2419
1400	2365	2378	2392	2405	2418	2432	2445	2458
1500	2400	2414	2428	2442	2456	2470	2484	2498
1600	2435	2450	2465	2479	2494	2509	2524	2539
1700	2534	2549	2565	2580	2595	2611	2626	2641
1800	2550	2566	2583	2598	2615	2631	2647	2663
1900	2591	2608	2625	2642	2655	2668	2681	2694
2000	2632	2650	2668	2685	2703	2721	2738	2756

S \ H	2500	2600	2700	2800	3000	3200	3400	3600	3800	4000
1500	2446	2478	2496	2515	2533	2661	2690	2720	2749	2779
1600	2485	2567	2587	2606	2626	2758	2789	2819	2850	2881
1700	2641	2657	2677	2697	2718	2856	2887	2919	2951	2983
1800	2663	2679	2701	2722	2743	2883	2917	2950	2984	3017
1900	2694	2701	2724	2746	2769	2911	2946	2981	3016	3052
2000	2756	2774	2798	2822	2846	2993	3030	3067	3103	3140
2200	2801	2825	2849	2873	2897	3049	3089	3129	3169	3560
2400	2895	2928	2961	2993	3026	3177	3211	3245	3662	3708
2600	3058	3087	3116	3145	3174	3252	3330	3766	3811	3855
2800	3219	3254	3289	3323	3358	3393	3779	3836	3894	3951
3000	3299	3332	3365	3398	3431	3845	3895	3946	3997	4048

Prices in bold refer to doors with heavy system

Options:

- lock with patent insert with possibility of opening from the inside - surcharge of 200 EUR
- handle support (lever) for light-weight door - surcharge of 190 EUR (in heavy-weight door this option is included free of charge)

PREMIUM SLIDING DOOR - POLYESTER - FERMOD ACCESSORIES - DPKG-LF 80 T>0 °C (GAS-TIGHT)

Characteristic:

- Door leaf thickness 80 mm, produced on the press, by high pressure injection of PUR foam into door framework
- Door finish - galvanized steel sheet coated with polyester paint in white colour RAL 9010
- Door leaf core - polyurethane foam, density of minimum 40 kg/m³
- Frame - complex and profiled, made of steel sheet coated with polyester paint in RAL 9010
- Accessories - delivered by FERMOD, made of aluminium
- Lower element - channel section made of stainless, acid-proof steel sheet, type 1.4301
- Eccentric ball valves - one for gas filling of the room, the other in order to take samples from the room atmosphere
- clamps - ensure door leaf tightness
- revision window - dimension of 528 x 828 mm

DPKG-LF 80 SINGLE LEAF								
S \ H	1800	1900	2000	2100	2200	2300	2400	2500
800	2210	2219	2227	2236	2244	2252	2261	2269
900	2227	2236	2245	2254	2263	2272	2282	2290
1000	2243	2253	2263	2273	2283	2292	2302	2312
1100	2293	2304	2315	2326	2336	2347	2358	2369
1200	2387	2400	2411	2423	2435	2447	2459	2471
1300	2423	2435	2447	2460	2472	2485	2497	2509
1400	2458	2470	2482	2493	2506	2520	2534	2548
1500	2492	2507	2522	2538	2552	2568	2583	2598
1600	2526	2510	2555	2570	2584	2609	2633	2648
1700	2649	2666	2682	2699	2715	2732	2748	2765
1800	2772	2788	2803	2819	2835	2851	2866	2882
1900	2814	2831	2847	2864	2880	2897	2913	2930
2000	2857	2877	2897	2917	2937	2957	2977	3112

S \ H	2500	2600	2700	2800	3000
1500	2598	2613	2661	2709	2757
1600	2648	2692	2722	2751	2781
1700	2765	2867	2903	2964	3307
1800	2882	2954	3025	3347	3341
1900	2930	3282	3336	3332	3361
2000	3112	3309	3358	3395	3433
2200	3327	3369	3411	3458	3505
2400	3483	3549	3615	3622	3630

Prices in bold refer to doors with heavy system

Options:

- lock with patent insert with possibility of opening from the inside - surcharge of 200 EUR
- door made in colour other than RAL 9010 - surcharge of 60 EUR/m²
- handle support (lever) for light-weight door - surcharge of 190 EUR (in heavy-weight door this option is included free of charge)

PREMIUM SLIDING DOOR - STAINLESS - FERMOD ACCESSORIES - DPKG-NF 80 T>0 °C (GAS-TIGHT)

Characteristic:

- Door leaf thickness 80 mm, produced on the press, by high pressure injection of PUR foam into door framework
- Door finish -stainless, acid-proof steel, type 1.4301, mat surface 2B or grinded surface 4N (option)
- Door leaf core - polyurethane foam, density of minimum 40 kg/m³
- Heated frame - complex and profiled, made of stainless, acid-proof steel, type 1.4301, mat surface 2B or grinded surface 4N (option)
- Accessories - delivered by FERMOD, made of aluminium
- Lower element - channel section made of stainless, acid-proof steel sheet, type 1.4301
- Eccentric ball valves - one for gas filling of the room, the other in order to take samples from the room atmosphere
- clamps - ensure door leaf tightness
- revision window - dimension of 528 x 828 mm

DPKG-NF 80 SINGLE LEAF								
S \ H	1800	1900	2000	2100	2200	2300	2400	2500
800	2481	2498	2516	2533	2551	2569	2586	2604
900	2511	2530	2548	2567	2587	2605	2624	2644
1000	2541	2572	2603	2619	2635	2651	2667	2683
1100	2602	2623	2645	2666	2688	2710	2731	2753
1200	2662	2685	2708	2731	2754	2777	2800	2823
1300	2714	2738	2762	2787	2811	2835	2859	2884
1400	2765	2791	2816	2842	2868	2893	2919	2944
1500	2824	2851	2878	2905	2932	2959	2986	3012
1600	2883	2906	2929	2951	2974	3013	3052	3080
1700	3009	3039	3068	3098	3128	3157	3187	3216
1800	3136	3167	3197	3228	3259	3290	3321	3352
1900	3192	3224	3256	3288	3321	3353	3385	3417
2000	3248	3287	3326	3366	3405	3444	3483	3619

S \ H	2500	2600	2700	2800	3000
1500	3012	3058	3124	3190	3256
1600	3080	3131	3182	3233	3284
1700	3216	3283	3349	3382	3846
1800	3352	3383	3414	3872	3898
1900	3417	3927	3978	4015	4071
2000	3619	4038	4103	4157	4212
2200	4071	4101	4228	4262	4420
2400	4292	4405	4519	4326	4548

Prices in bold refer to doors with heavy system

Options:

- lock with patent insert with possibility of opening from the inside - surcharge of 200 EUR
- handle support (lever) for light-weight door - surcharge of 190 EUR (in heavy-weight door this option is included free of charge)

UNIVERSAL HINGED DOORS, “DRU” TYPE



APPLICATION

DRU are multifunctional hinged doors which can be applied in different conditions and locations, such as industrial objects, production facilities store houses, etc. The structure of the door ensures its strength and durability. High insulation value has been achieved thanks to polyurethane foam core (PUR).

DOOR LEAF

Door leaf is produced on the press, by high pressure injection of PUR foam into door framework. The density of PUR core is not less than 40 kg/m³.

Available thickness

- 50mm - single or double-leaf

Door leaf finish

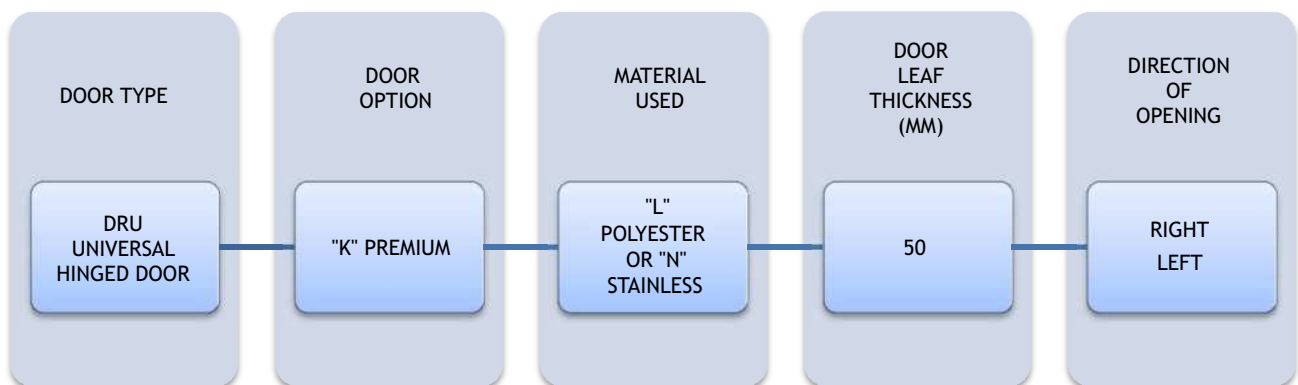
- stainless, stainless, acid-proof steel (N), type 1.4301, thickness 0,8 mm, mat surface 2B
- galvanized steel sheet 0,75 mm coated with polyester paint in white colour RAL 9010

ACCESSORIES

- lock with patent insert
- handle or knob made of stainless, acid-proof steel, type 1.4301
- hinges made of stainless, acid-proof steel, type 1.4301
- bolt in double-leaf door

OPTIONS

- Untypical door leaf finish:
 - Stainless, acid-proof steel (N), type 1.4301, thickness 0,8 mm, grinded surface 4B or grained surface
 - Galvanized steel sheet (T) thickness 0,75 mm, coated with polyester paint other than white
 - Polyester laminate PECOLIT in RAL 9016 with stainless, acid-proof door leaf framing (N), type 1.4301
- Availability to produce door with and without a threshold (lower element is installed in the floor)
- Door pump
- Electric hook
- Door windows:
 - Round window ø280 mm
 - Window in a different shape (special enquiry)
 - Execution of opening for a individual glazing
- Ventilation bar:
 - Dimension 455 x 135 mm
 - Other dimension and shape - individual enquiry
- Flashing of the door opening



Enquiry/order example:



DRU-L - Universal hinged door, polyester paint finish, door leaf thickness 50 mm, direction of opening to the right.

UNIVERSAL HINGED DOORS, STAINLESS DRU-N T>0 °C

Characteristic:

- **Door leaf** thickness 50 mm, produced on the press, by high pressure injection of PUR foam into door framework
- **Door finish** - stainless, acid-proof steel, type 1.4301, mat surface 2B or grinded surface 4N (option)
- **Door leaf core** - polyurethane foam, density of minimum 40 kg/m³
- **Door closing** - lock with patent insert + stainless, acid-proof handle
- **Hinges** - stainless, acid-proof, type 1.4301
- **Frame** - complex and profiled, made of stainless, acid-proof steel, type 1.4301, mat surface 2B or grinded surface 4N (option)

DRU-N 50 SINGLE LEAF			
S \ H	2000	2100	2200
800	745	764	784
900	795	814	833
1000	826	844	862
1100	853	903	952
1200	927	943	1007
1300	957	977	1022
1400	987	1011	1038
1500	1018	1045	1046

DRU-N 50 DOUBLE LEAF							
S \ H	2000	2100	2200	2300	2400	2500	2600
1200	1191	1232	1274	1299	1325	1351	1377
1300	1222	1264	1307	1334	1361	1389	1416
1400	1253	1297	1340	1369	1398	1426	1455
1500	1284	1329	1374	1404	1434	1464	1493
1600	1314	1361	1407	1438	1470	1501	1532
1700	1345	1393	1441	1473	1505	1538	1571
1800	1376	1425	1474	1508	1542	1575	1609
1900	1460	1501	1543	1578	1613	1648	1683
2000	1543	1577	1611	1647	1684	1720	1757
2100	1574	1613	1653	1691	1728	1766	1816
2200	1605	1650	1695	1734	1773	1812	1876
2300	1637	1687	1737	1777	1817	1857	1915
2400	1668	1723	1779	1820	1862	1903	1953
2500	1699	1760	1820	1863	1906	1949	1992

Grained door surface - surcharge of 16%

Options:

- window, size 400 mm x 600 mm - surcharge of 105 EUR
- ventilation bar - surcharge of 60 EUR

UNIVERSAL HINGEND DOORS, POLYESTER DRU-L T>0 °C

Characteristic:

- **Door leaf** thickness 50 mm, produced on the press, by high pressure injection of PUR foam into door framework
- **Door finish** - galvanized steel sheet coated with polyester paint in white colour RAL 9010
- **Door leaf core** - polyurethane foam, density of minimum 40 kg/m³
- **Door closing** - lock with patent insert + stainless, acid-proof handle
- **Hinges** - stainless, acid-proof, type 1.4301
- **Frame** - complex and profiled, made of stainless, acid-proof steel, type 1.4301, mat surface 2B or grinded surface 4N (option)

DRU-L 50 SINGLE LEAF			
S \ H	2000	2100	2200
800	585	595	605
900	586	596	605
1000	603	628	654
1100	632	672	712
1200	705	716	756
1300	722	734	771
1400	731	743	777
1500	748	761	785

DRU-L 50 DOUBLE LEAF								
S \ H	2000	2100	2200	2300	2400	2500	2600	
1200	971	985	999	1012	1026	1056	1086	
1300	988	1002	1016	1031	1045	1076	1106	
1400	1004	1019	1034	1049	1064	1096	1127	
1500	1020	1036	1052	1068	1083	1115	1148	
1600	1037	1053	1070	1086	1103	1135	1168	
1700	1053	1070	1088	1104	1122	1155	1188	
1800	1070	1088	1105	1123	1141	1175	1209	
1900	1124	1150	1177	1186	1195	1231	1267	
2000	1139	1174	1210	1210	1210	1248	1286	
2100	1196	1214	1271	1276	1281	1317	1366	
2200	1221	1247	1299	1308	1318	1350	1411	
2300	1246	1279	1326	1340	1354	1384	1432	
2400	1271	1312	1354	1372	1391	1417	1453	
2500	1296	1339	1381	1404	1428	1451	1474	

Options:

- door made in colour other than RAL 9010 - surcharge of 60 EUR/m²
- window, size 400 mm x 600 mm - surcharge of 105 EUR
- ventilation bar - surcharge of 60 EUR

SWING DOORS, “DW” TYPE



APPLICATION

DW doors are great solution for industrial gateways with high number of passages (production facilities, supermarkets, restaurants, shops, etc.). The structure of the door ensures its strength and durability. High insulation value has been achieved thanks to polyurethane foam core (PUR).

DOOR LEAF

Door leaf is produced on the press, by high pressure injection of PUR foam into door framework. The density of PUR core is not less than 40 kg/m^3 .

DOOR LEAF FINISH

- Stainless, stainless, acid-proof steel (N), type 1.4301, thickness 0,8 mm, mat surface 2B
- Galvanized steel sheet 0,75 mm coated with polyester paint in white colour RAL 9010

Swing doors are equipped with round stainless, acid-proof window, diameter of $\varnothing 280 \text{ mm}$ (standard).

Swing doors can be produced in single or double-leaf option.

FRAME

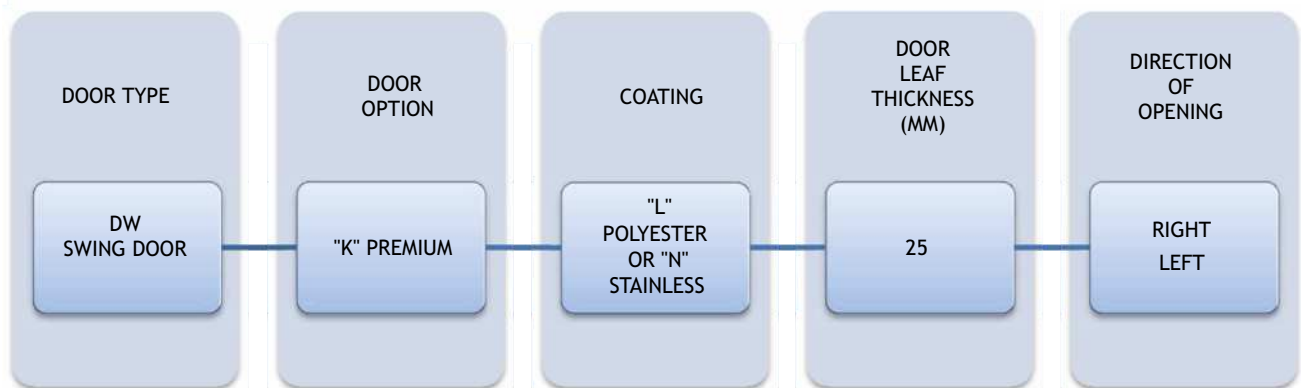
Swing doors DW installed to sandwich panel are equipped in frame in the shape of channel section, in case the DW doors are installed to brick wall are equipped in installation profile. Both channel section and installation profile are made of made of stainless, acid-proof steel, type 1.4301 or galvanized steel sheet coated with polyester paint in white colour RAL 9010.

HINGES

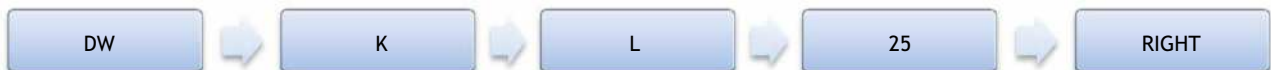
Hinges are delivered by FERMOD and are made of stainless, acid-proof steel or PVC with “STOP” function.

OPTION

- Untypical door leaf finish:
 - Stainless, acid-proof steel (N), type 1.4301, thickness 0,8 mm, grinded surface 4B or grained surface
 - Galvanized steel sheet (T) thickness 0,75 mm, coated with polyester paint other than white
 - Polyester laminate PECOLIT in RAL 9016 with stainless, acid-proof door leaf framing (N), type 1.4301
- Door windows:
 - Window in a different shape (special enquiry)
 - Execution of opening for a individual glazing
- Flashing of the door opening
- Execution in composite material PE 500



Enquiry/order example:



DW-L - swing door, polyester paint finish, door leaf thickness 25 mm, direction of opening to the right.

SWING DOORS, POLYESTER DW-L T>0 °C

Characteristic:

- **Door leaf** thickness 25 mm, produced on the press, by high pressure injection of PUR foam into door framework
- **Door finish** - galvanized steel sheet coated with polyester paint in white colour RAL 9010
- **Door leaf core** - polyurethane foam, density of minimum 40 kg/m³
- **Hinges** - stainless, acid-proof, type 1.4301
- **Window** - round shape, stainless, acid-proof, type 1.4301
- **Buffers** preventing against damages

DW-L SINGLE LEAF						
S \ H	2000	2100	2200	2300	2400	2500
700	857	864	871	878	885	892
800	872	880	887	895	902	910
900	886	895	903	912	920	929
1000	901	910	919	/	/	/
1100	916	925	935	/	/	/
1200	930	941	952	/	/	/
1300	945	956	968	/	/	/

DW-L DOUBLE LEAF						
S \ H	2000	2100	2200	2300	2400	2500
1200	1409	1421	1433	1445	1457	1470
1300	1433	1446	1459	1472	1485	1498
1400	1457	1471	1485	1498	1512	1526
1500	1482	1496	1510	1525	1539	1553
1600	1506	1521	1536	1551	1566	1581
1700	1530	1546	1561	1577	1593	1609
1800	1554	1570	1587	1604	1621	1637
1900	1578	1595	1613	1630	1647	1665
2000	1602	1620	1638	/	/	/
2100	1626	1645	1664	/	/	/
2200	1650	1670	1689	/	/	/
2300	1674	1695	1715	/	/	/
2400	1698	1720	1741	/	/	/
2500	1722	1744	1766	/	/	/
2600	1746	1769	1792	/	/	/

Options:

- door made in colour other than RAL 9010 - surcharge of 60 EUR/m²

SWING DOORS, STAINLESS DW-N T>0 °C

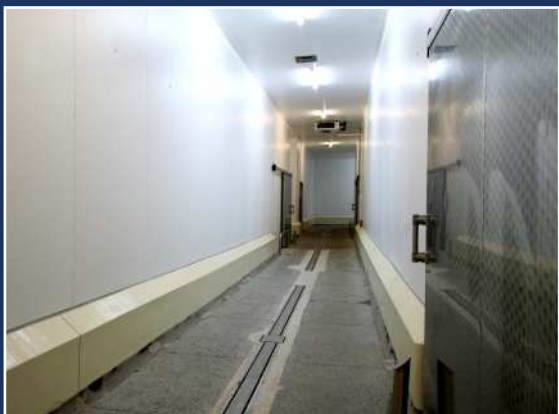
Characteristic:

- **Door leaf** thickness 25 mm, produced on the press, by high pressure injection of PUR foam into door framework
- **Door finish** - stainless, acid-proof steel, type 1.4301, mat surface 2B or grinded surface 4N (option)
- **Door leaf core** - polyurethane foam, density of minimum 40 kg/m³
- **Hinges** - stainless, acid-proof, type 1.4301
- **Window** - round shape, stainless, acid-proof, type 1.4301
- **Buffers** preventing against damages

DW-N SINGLE LEAF						
S \ H	2000	2100	2200	2300	2400	2500
700	992	1007	1022	1037	1052	1068
800	1023	1040	1056	1073	1089	1106
900	1054	1072	1090	1108	1126	1144
1000	1085	1105	1124			
1100	1116	1137	1158			
1200	1148	1170	1192			
1300	1178	1202	1226			

DW-N DOUBLE LEAF						
S \ H	2000	2100	2200	2300	2400	2500
1200	1593	1615	1638	1661	1684	1707
1300	1631	1656	1680	1704	1729	1753
1400	1670	1696	1722	1748	1773	1799
1500	1709	1736	1763	1791	1818	1845
1600	1748	1776	1805	1834	1862	1891
1700	1786	1816	1847	1877	1907	1937
1800	1825	1857	1888	1920	1952	1983
1900	1864	1897	1930	1963	1996	2029
2000	1903	1937	1972			
2100	1942	1977	2013			
2200	1980	2018	2055			
2300	2019	2058	2097			
2400	2058	2098	2138			
2500	2097	2138	2180			
2600	2135	2178	2222			

www.panelitech.pl



PANELTECH[®]