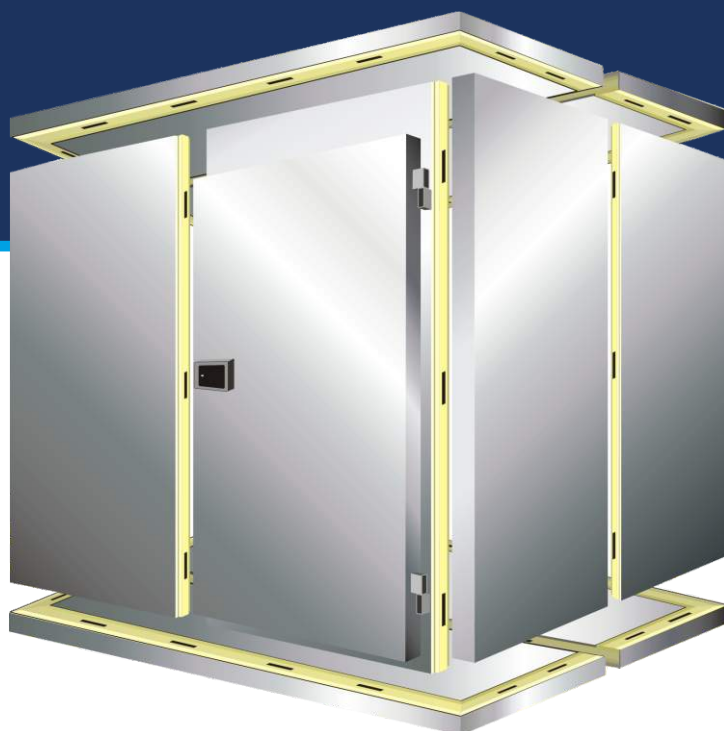


MODULAR COLD ROOMS



High quality equipment
and automatic

PaNELTECH Sp. z o.o.
41-508 Chorzów
ul. Michałkowicka 24
tel. 32 245 91 41
fax 32 245 91 39
drzwi@paneltech.pl

www.paneltech.pl

version 2021.2

CERTIFICAZIONE
DI PRODOTTO
BUREAU VERITAS
Certification



Modular cold rooms system PaNELTECH is based on steel sheets with polyurethane core, which are joined with each other by special camlock system. This solution enables an easy and fast assembly and disassembly of the cold room, as well as its further relocation or expansion by adding additional modules. Thanks to its simplicity the assembly is cheap and time-sparing. It can be done with just 2 persons. Our cold rooms distinguish themselves with high quality, excellent heat insulation value and esthetic qualities. The cold rooms are equipped with hinged or sliding doors with FERMOD accessories. PaNELTECH cold rooms meet European hygienic and technical standards.

Panel technical data:

- **Facing:** steel sheet, thickness 0,75mm, coated with polyester paint in standard white colour RAL 9010 or acid-proof stainless steel type 1.4301, thickness 0,8 mm;
- **Core material:** polyurethane foam, density of 40 kg/m³;
- **Jointing system:** Camlock joints, ensuring exact and tight connection between all the edges;
- **Thickness of cold room walls:** 80mm;
- **Thickness of freezer room walls:** 100mm.

Panel dimensions:

- **wall panel for cold rooms:** width - 1150mm, maximal length - 2700mm, thickness - 80mm;
- **corner panel for cold rooms:** width - 1050mm, maximal length - 2700mm, thickness - 80mm;
- **roof/floor panel for cold rooms:** width - 1050/1150mm, maximal length - 2700mm, thickness - 80mm;
- **wall panel for freezer rooms:** width - 1150mm, maximal length - 2600mm, thickness - 100mm;
- **corner panel for freezer rooms:** width - 1050mm, maximal length - 2600mm, thickness - 100mm;
- **roof/floor panel for freezer rooms:** width - 1050/1150mm, maximal length - 2600mm, thickness - 100mm.

Standard external dimensions of the cold room and freezer rooms:

- 1310x2100x2100/2200* (h) mm;
- 1310x3250x2100/2200* (h) mm;
- 1310x4400x2100/2200* (h) mm;
- 2460x2100x2100/2200* (h) mm;
- 2460x3250x2100/2200* (h) mm;
- 2460x4400x2100/2200* (h) mm;
- custom dimensions on request.

* cold room with a floor

Applications:

- Hotels, restaurants, fast-foods;
- Food processing facilities;
- Milk and milk products producers and distributors;
- Sea food processing facilities and storehouses;
- Fruits and vegetables processing facilities and storehouses;
- Bakeries;
- Supermarkets;
- Others.

PRICELIST OF STANDARD MODULAR COLD ROOMS SYSTEMS with hinged doors type DRK-L/N 60, 800x2000mm:

MODULAR COLDROOM WITHOUT FLOOR						
Facing – RAL 9010 white steel sheet						
width (mm)	length (mm)	height (H) (mm)	thickness of the walls (mm)	Price of the cold room	Price of the doors	Total net price (EURO)
1310	2100	2100	80	1 435 €	512 €	1 964 €
1310	3250	2100	80	1 991 €	512 €	2 503 €
1310	4400	2100	80	2 530 €	512 €	3 042 €
2460	2100	2100	80	2 069 €	512 €	2 580 €
2460	3250	2100	80	2 720 €	512 €	3 231 €
2460	4400	2100	80	3 371 €	512 €	3 883 €
width (mm)	length (mm)	height (H) (mm)	thickness of the walls (mm)	Price of the cold room	Price of the doors	Total net price (EURO)
1310	2100	2500	80	1 684 €	512 €	2 196 €
1310	3250	2500	80	2 301 €	512 €	2 813 €
1310	4400	2500	80	2 919 €	512 €	3 430 €
2460	2100	2500	80	2 379 €	512 €	2 890 €
2460	3250	2500	80	3 109 €	512 €	3 620 €
2460	4400	2500	80	3 838 €	512 €	4 350 €

MODULAR COLDROOM WITHOUT FLOOR

Facing of the cold room: steel sheet, thickness 0,75mm, coated with polyester paint in standard white colour (RAL 9010);

Thickness of cold room walls: 80mm, produced on the press, by high pressure injection of PUR foam into door framework;

Joints: quick-installation Camlock system.

DRK-L-60 - Premium hinged painted doors for cold rooms.

Door leaf: thickness of 60mm made of folded steel sheet;

Door finish: steel sheet, thickness of 0,75mm, galvanized on both sides, coated with polyester paint in standard white colour RAL 9010;

Door leaf core: polyurethane foam, minimal density of 40 kg/m³;

Lock: delivered by FERMOD;

Hinges: delivered by FERMOD;

Lower element: channel section made of acid-proof stainless steel sheet type 1.4301;

Frame: complex and profiled, made of steel sheet, thickness of 1,5mm, galvanized on both sides, coated with polyester paint in standard white colour RAL 9010.

OPTIONAL:

- Cold room with custom dimensions;
- Cold room in custom colours (other than RAL 9010);
- Cold room with window;
- Hinged or sliding doors for cold rooms with custom dimensions.

MODULAR COLDROOM WITH FLOOR						
Facing – RAL 9010 white steel sheet						
width (mm)	length (mm)	height (H) (mm)	thickness of the walls (mm)	Price of the cold room	Price of the doors	Total net price (EURO)
1310	2100	2100	80	1 771 €	512 €	2 283 €
1310	3250	2100	80	2 472 €	512 €	2 983 €
1310	4400	2100	80	3 173 €	512 €	3 684 €
2460	2100	2100	80	2 635 €	512 €	3 146 €
2460	3250	2100	80	3 573 €	512 €	4 084 €
2460	4400	2100	80	4 511 €	512 €	5 022 €
width (mm)	length (mm)	height (H) (mm)	thickness of the walls (mm)	Price of the cold room	Price of the doors	Total net price (EURO)
1310	2100	2500	80	2 014 €	512 €	2 526 €
1310	3250	2500	80	2 797 €	512 €	3 309 €
1310	4400	2500	80	3 580 €	512 €	4 092 €
2460	2100	2500	80	2 960 €	512 €	3 472 €
2460	3250	2500	80	3 980 €	512 €	4 492 €
2460	4400	2500	80	5 000 €	512 €	5 512 €

MODULAR COLD ROOM WITH FLOOR

Facing of the cold room: steel sheet, thickness 0,75mm, coated with polyester paint in standard white colour (RAL 9010);

Thickness of cold room walls: 80mm, produced on the press, by high pressure injection of PUR foam into door framework;

Walls Joints: quick-installation Camlock system.

DRK-L-60 - Premium hinged painted doors for cold rooms.

Door leaf: thickness of 60mm made of folded steel sheet;

Door finish: steel sheet thickness of 0,75mm, galvanized on both sides, coated with polyester paint in standard white colour RAL 9010;

Door leaf core: polyurethane foam, minimal density of 40 kg/m³;

Lock: delivered by FERMOD;

Hinges: delivered by FERMOD;

Lower element: channel section made of acid-proof stainless steel sheet type 1.4301;

Frame: complex and profiled - made of steel sheet, thickness of 1,5mm, galvanized on both sides, coated with polyester paint, standard white colour RAL 9010.

OPTIONAL:

- Cold room with custom dimensions;
- Cold room in custom colours (other than RAL 9010);
- Cold room with window;
- Hinged or sliding doors for cold rooms with custom dimensions;
- Cold room floor made of riffled acid-proof stainless steel sheet, thickness of 3mm;
- Cold room floor made of riffled aluminum sheet, thickness of 3mm.

MODULAR COLD ROOM WITHOUT FLOOR						
Facing – acid-proof stainless steel sheet type 1.4301, with mat surface 2B						
width (mm)	length (mm)	height (H) (mm)	thickness of the walls (mm)	Price of the cold room	Price of the doors	Total net price (EURO)
1310	2100	2100	80	2 157 €	707 €	2 864 €
1310	3250	2100	80	2 958 €	707 €	3 665 €
1310	4400	2100	80	3 758 €	707 €	4 465 €
2460	2100	2100	80	3 073 €	707 €	3 779 €
2460	3250	2100	80	4 040 €	707 €	4 747 €
2460	4400	2100	80	5 008 €	707 €	5 715 €
width (mm)	length (mm)	height (H) (mm)	thickness of the walls (mm)	Price of the cold room	Price of the doors	Total net price (EURO)
1310	2100	2500	80	2 502 €	707 €	3 209 €
1310	3250	2500	80	3 419 €	707 €	4 126 €
1310	4400	2500	80	4 336 €	707 €	5 042 €
2460	2100	2500	80	3 534 €	707 €	4 240 €
2460	3250	2500	80	4 618 €	707 €	5 324 €
2460	4400	2500	80	5 701 €	707 €	6 408 €

MODULAR COLD ROOM WITHOUT FLOOR

Facing of the cold room: acid-proof stainless steel sheet type 1.4301, thickness of 0,8mm, standard surface 2B;

Thickness of cold room walls: 80mm, produced on the press, by high pressure injection of PUR foam into door framework;

Joints: quick-installation Camlock system.

DRK-N-60 - Premium hinged stainless doors for cold rooms.

Door leaf: thickness of 60mm made of folded steel sheet;

Door finish: acid-proof stainless steel sheet thickness of 0,8mm, with mat surface 2B or polished 4N (OPTIONAL);

Door leaf core: polyurethane foam, minimal density of 40 kg/m³;

Lock: delivered by FERMOD;

Hinges: delivered by FERMOD;

Lower element: channel section made of acid-proof stainless steel sheet type 1.4301;

Frame: complex and profiled - made of acid-proof stainless steel sheet, type 1.4301 with mat surface 2B or polished 4N (OPTIONAL).

OPTIONAL:

- Cold room with custom dimensions;
- Cold room made of acid-proof stainless polished or grained steel sheets;
- Cold room with window;
- Hinged or sliding doors for cold rooms with custom dimensions.

MODULAR COLD ROOM WITH FLOOR						
Facing – acid-proof stainless steel sheet type 1.4301, with mat surface 2B						
width (mm)	length (mm)	height (H) (mm)	thickness of the walls (mm)	Price of the cold room	Price of the doors	Total net price (EURO)
1310	2100	2100	80	2 630 €	707 €	3 336 €
1310	3250	2100	80	3 670 €	707 €	4 377 €
1310	4400	2100	80	4 711 €	707 €	5 418 €
2460	2100	2100	80	3 912 €	707 €	4 618 €
2460	3250	2100	80	5 304 €	707 €	6 011 €
2460	4400	2100	80	6 696 €	707 €	7 403 €
width (mm)	length (mm)	height (H) (mm)	thickness of the walls (mm)	Price of the cold room	Price of the doors	Total net price (EURO)
1310	2100	2500	80	2 991 €	707 €	3 698 €
1310	3250	2500	80	4 154 €	707 €	4 860 €
1310	4400	2500	80	5 316 €	707 €	6 023 €
2460	2100	2500	80	4 395 €	707 €	5 102 €
2460	3250	2500	80	5 909 €	707 €	6 616 €
2460	4400	2500	80	7 424 €	707 €	8 130 €

MODULAR COLDROOM WITH FLOOR

Facing of the cold room: acid-proof stainless steel sheet type 1.4301, thickness of 0,8mm, standard surface 2B;

Thickness of cold room walls: 80mm, produced on the press, by high pressure injection of PUR foam into door framework;

Joints: quick-installation Camlock system.

DRK-N-60 - Premium hinged stainless doors for cold rooms.

Door leaf: thickness of 60mm made of folded steel sheet folded;

Door finish: acid-proof stainless steel sheet thickness of 0,8mm, with mat surface 2B or polished 4N (OPTIONAL);

Door leaf core: polyurethane foam, minimal density of 40 kg/m³;

Lock: delivered by FERMOD;

Hinges: delivered by FERMOD;

Lower element: channel section made of acid-proof stainless steel sheet type 1.4301;

Frame: complex and profiled - made of acid-proof stainless steel sheet, type 1.4301 with mat surface 2B or polished 4N (OPTIONAL).

OPTIONAL:

- Cold room with custom dimensions;
- Cold room made of acid-proof stainless polished or grained steel sheets;
- Cold room with window;
- Hinged or sliding doors for cold rooms with custom dimensions.
- Cold room floor made of riffled acid-proof stainless steel sheet, thickness of 3mm;
- Cold room floor made of riffled aluminum sheet, thickness of 3mm.

PRICELIST OF STANDARD MODULAR FREEZER ROOMS SYSTEMS with hinged doors type DRK-L/N 100, 800x2000mm:

MODULAR FREEZER ROOM WITH FLOOR						
Facing – RAL 9010 white steel sheet						
width (mm)	length (mm)	height (H) (mm)	thickness of the walls (mm)	Price of the cold room	Price of the doors	Total net price (EURO)
1310	2100	2200	100	2 344 €	676 €	3 021 €
1310	3250	2200	100	3 268 €	676 €	3 944 €
1310	4400	2200	100	4 191 €	676 €	4 867 €
2460	2100	2200	100	3 476 €	676 €	4 152 €
2460	3250	2200	100	4 702 €	676 €	5 379 €
2460	4400	2200	100	5 929 €	676 €	6 605 €
width (mm)	length (mm)	height (H) (mm)	thickness of the walls (mm)	Price of the cold room	Price of the doors	Total net price (EURO)
1310	2100	2500	100	2 578 €	676 €	3 254 €
1310	3250	2500	100	3 580 €	676 €	4 256 €
1310	4400	2500	100	4 582 €	676 €	5 259 €
2460	2100	2500	100	3 788 €	676 €	4 465 €
2460	3250	2500	100	5 094 €	676 €	5 770 €
2460	4400	2500	100	6 399 €	676 €	7 075 €

MODULAR FREEZER ROOM WITH FLOOR

Facing of the freezer room: steel sheet, thickness 0,75mm, coated with polyester paint, standard white colour (RAL 9010);

Thickness of freezer room walls: 100mm, produced on the press, by high pressure injection of PUR foam into door framework;

Joints: quick-installation Camlock system.

DRK-L-100 - Premium hinged painted doors for freezer rooms.

Door leaf: thickness of 100mm made of folded steel sheet folded;

Door finish: steel sheet thickness of 0,75mm, galvanized on both sides, coated with polyester paint in standard white colour RAL 9010;

Door leaf core: polyurethane foam, minimal density of 40 kg/m³;

Lock: delivered by FERMOD;

Hinges: delivered by FERMOD;

Frame: complex and profiled - made of steel sheet, thickness of 1,5mm, galvanized on both sides, coated with polyester paint in standard white colour RAL 9010.

OPTIONAL:

- Freezer rooms with custom dimensions;
- Freezer room in custom colours (other than RAL 9010);
- Freezer rooms with window;
- Hinged or sliding doors for freezer rooms with custom dimensions;
- Freezer room floor made of riffled acid-proof stainless steel sheet, thickness of 3mm;
- Freezer room floor made of riffled aluminum sheet, thickness of 3mm;
- Strip curtains made of PVC.

MODULAR FREEZER ROOM WITH FLOOR						
Facing – acid-proof stainless steel sheet type 1.4301, with mat surface 2B						
width (mm)	length (mm)	height (H) (mm)	thickness of the walls (mm)	Price of the cold room	Price of the doors	Total net price (EURO)
1310	2100	2200	100	3 233 €	937 €	4 170 €
1310	3250	2200	100	4 506 €	937 €	5 443 €
1310	4400	2200	100	5 778 €	937 €	6 715 €
2460	2100	2200	100	4 792 €	937 €	5 729 €
2460	3250	2200	100	6 483 €	937 €	7 420 €
2460	4400	2200	100	8 174 €	937 €	9 111 €
width (mm)	length (mm)	height (H) (mm)	thickness of the walls (mm)	Price of the cold room	Price of the doors	Total net price (EURO)
1310	2100	2500	100	3 555 €	937 €	4 492 €
1310	3250	2500	100	4 937 €	937 €	5 874 €
1310	4400	2500	100	6 318 €	937 €	7 255 €
2460	2100	2500	100	5 223 €	937 €	6 160 €
2460	3250	2500	100	7 023 €	937 €	7 960 €
2460	4400	2500	100	8 822 €	937 €	9 759 €

MODULAR FREEZER ROOM WITH FLOOR

Facing of the freezer room: acid-proof stainless steel sheet type 1.4301, thickness of 0,8mm, standard surface 2B;

Thickness of freezer room walls: 100mm, produced on the press, by high pressure injection of PUR foam into door framework;

Joints: quick-installation Camlock system.

DRK-N-100 - Premium hinged stainless doors for cold rooms.

Door leaf: thickness of 100mm made of folded steel sheet;

Door finish: acid-proof stainless steel sheet thickness of 0,8mm, with mat surface 2B or polished 4N (OPTIONAL);

Door leaf core: polyurethane foam, minimal density of 40 kg/m³;

Lock: delivered by FERMOD;

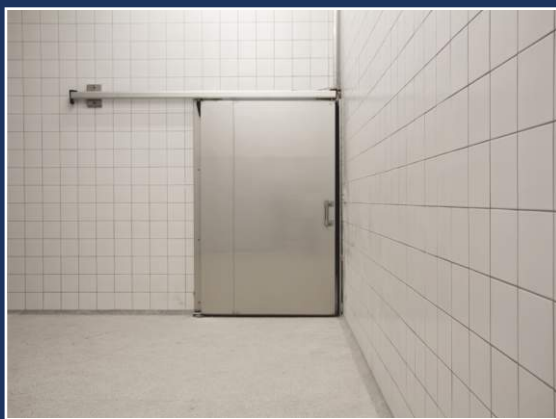
Hinges: delivered by FERMOD;

Frame: complex and profiled - made of acid-proof stainless steel sheet, type 1.4301 with mat surface 2B or polished 4N (OPTIONAL).

OPTIONAL:

- Freezer rooms with custom dimensions;
- Freezer room made of acid-proof stainless polished or grained steel sheets;
- Freezer rooms with window;
- Hinged or sliding doors for freezer rooms with custom dimensions.
- Freezer room floor made of riffled acid-proof stainless steel sheet, thickness of 3mm;
- Freezer room floor made of riffled aluminum sheet, thickness of 3mm.
- Strip curtains made of PVC.

www.paneltech.pl



PANELTECH[®]
MODERN BUILDING