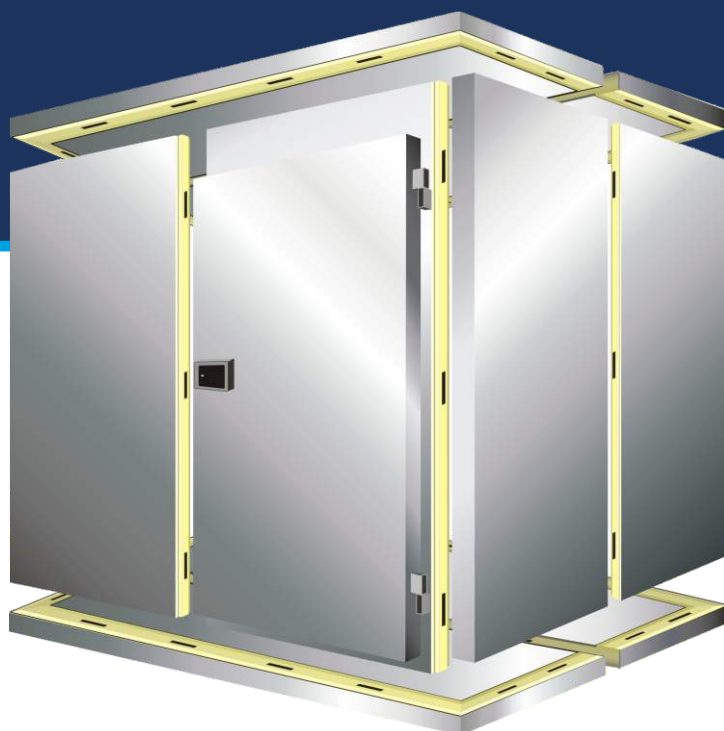


MODULAR COLD ROOMS



High quality equipment
and automatic

PaNELTECH Sp. z o.o.
41-508 Chorzów
ul. Michałkowicka 24
tel. 32 245 91 41
fax 32 245 91 39
drzwi@paneltech.pl

www.paneltech.pl

version 2021.3

CERTIFICAZIONE
DI PRODOTTO
BUREAU VERITAS
Certification



Modular cold rooms system PaNELTECH is based on steel sheets with polyurethane core, which are joined with each other by special camlock system. This solution enables an easy and fast assembly and disassembly of the cold room, as well as its further relocation or expansion by adding additional modules. Thanks to its simplicity the assembly is cheap and time-sparing. It can be done with just 2 persons. Our cold rooms distinguish themselves with high quality, excellent heat insulation value and esthetic qualities. The cold rooms are equipped with hinged or sliding doors with FERMOD accessories. PaNELTECH cold rooms meet European hygienic and technical standards.

Panel technical data:

- **Facing:** steel sheet, thickness 0,75mm, coated with polyester paint in standard white colour RAL 9010 or acid-proof stainless steel type 1.4301, thickness 0,8 mm;
- **Core material:** polyurethane foam, density of 40 kg/m³;
- **Jointing system:** Camlock joints, ensuring exact and tight connection between all the edges;
- **Thickness of cold room walls:** 80mm;
- **Thickness of freezer room walls:** 100mm.

Panel dimensions:

- **wall panel for cold rooms:** width - 1150mm, maximal length - 2700mm, thickness - 80mm;
- **corner panel for cold rooms:** width - 1050mm, maximal length - 2700mm, thickness - 80mm;
- **roof/floor panel for cold rooms:** width - 1050/1150mm, maximal length - 2700mm, thickness - 80mm;
- **wall panel for freezer rooms:** width - 1150mm, maximal length - 2600mm, thickness - 100mm;
- **corner panel for freezer rooms:** width - 1050mm, maximal length - 2600mm, thickness - 100mm;
- **roof/floor panel for freezer rooms:** width - 1050/1150mm, maximal length - 2600mm, thickness - 100mm.

Standard external dimensions of the cold room and freezer rooms:

- 1310x2100x2100/2200* (h) mm;
- 1310x3250x2100/2200* (h) mm;
- 1310x4400x2100/2200* (h) mm;
- 2460x2100x2100/2200* (h) mm;
- 2460x3250x2100/2200* (h) mm;
- 2460x4400x2100/2200* (h) mm;
- custom dimensions on request.

* cold room with a floor

Applications:

- Hotels, restaurants, fast-foods;
- Food processing facilities;
- Milk and milk products producers and distributors;
- Sea food processing facilities and storehouses;
- Fruits and vegetables processing facilities and storehouses;
- Bakeries;
- Supermarkets;
- Others.

PRICELIST OF STANDARD MODULAR COLD ROOMS SYSTEMS with hinged doors type DRK-L/N 60, 800x2000mm:

MODULAR COLDROOM WITHOUT FLOOR						
Facing – RAL 9010 white steel sheet						
width (mm)	length (mm)	height (H) (mm)	thickness of the walls (mm)	Price of the cold room	Price of the doors	Total net price (EURO)
1310	2100	2100	80	1835 €	597 €	2432 €
1310	3250	2100	80	2516 €	597 €	3113 €
1310	4400	2100	80	3197 €	597 €	3794 €
2460	2100	2100	80	2614 €	597 €	3211 €
2460	3250	2100	80	3437 €	597 €	4034 €
2460	4400	2100	80	4260 €	597 €	4857 €
width (mm)	length (mm)	height (H) (mm)	thickness of the walls (mm)	Price of the cold room	Price of the doors	Total net price (EURO)
1310	2100	2500	80	2128 €	597 €	2725 €
1310	3250	2500	80	2908 €	597 €	3505 €
1310	4400	2500	80	3688 €	597 €	4285 €
2460	2100	2500	80	3006 €	597 €	3603 €
2460	3250	2500	80	3928 €	597 €	4525 €
2460	4400	2500	80	4850 €	597 €	5447 €

MODULAR COLDROOM WITHOUT FLOOR

Facing of the cold room: steel sheet, thickness 0,75mm, coated with polyester paint in standard white colour (RAL 9010);

Thickness of cold room walls: 80mm, produced on the press, by high pressure injection of PUR foam into door framework;

Joints: quick-installation Camlock system.

DRK-L-60 - Premium hinged painted doors for cold rooms.

Door leaf: thickness of 60mm made of folded steel sheet;

Door finish: steel sheet, thickness of 0,75mm, galvanized on both sides, coated with polyester paint in standard white colour RAL 9010;

Door leaf core: polyurethane foam, minimal density of 40 kg/m³;

Lock: delivered by FERMOD;

Hinges: delivered by FERMOD;

Lower element: channel section made of acid-proof stainless steel sheet type 1.4301;

Frame: complex and profiled, made of steel sheet, thickness of 1,5mm, galvanized on both sides, coated with polyester paint in standard white colour RAL 9010.

OPTIONAL:

- Cold room with custom dimensions;
- Cold room in custom colours (other than RAL 9010);
- Cold room with window;
- Hinged or sliding doors for cold rooms with custom dimensions.

MODULAR COLDROOM WITH FLOOR						
Facing – RAL 9010 white steel sheet						
width (mm)	length (mm)	height (H) (mm)	thickness of the walls (mm)	Price of the cold room	Price of the doors	Total net price (EURO)
1310	2100	2100	80	2133 €	597 €	2730 €
1310	3250	2100	80	2977 €	597 €	3574 €
1310	4400	2100	80	3821 €	597 €	4418 €
2460	2100	2100	80	3173 €	597 €	3770 €
2460	3250	2100	80	4303 €	597 €	4899 €
2460	4400	2100	80	5432 €	597 €	6029 €
width (mm)	length (mm)	height (H) (mm)	thickness of the walls (mm)	Price of the cold room	Price of the doors	Total net price (EURO)
1310	2100	2500	80	2426 €	597 €	3023 €
1310	3250	2500	80	3369 €	597 €	3966 €
1310	4400	2500	80	4312 €	597 €	4909 €
2460	2100	2500	80	3565 €	597 €	4162 €
2460	3250	2500	80	4793 €	597 €	5390 €
2460	4400	2500	80	6022 €	597 €	6618 €

MODULAR COLD ROOM WITH FLOOR

Facing of the cold room: steel sheet, thickness 0,75mm, coated with polyester paint in standard white colour (RAL 9010);

Thickness of cold room walls: 80mm, produced on the press, by high pressure injection of PUR foam into door framework;

Walls Joints: quick-installation Camlock system.

DRK-L-60 - Premium hinged painted doors for cold rooms.

Door leaf: thickness of 60mm made of folded steel sheet;

Door finish: steel sheet thickness of 0,75mm, galvanized on both sides, coated with polyester paint in standard white colour RAL 9010;

Door leaf core: polyurethane foam, minimal density of 40 kg/m³;

Lock: delivered by FERMOD;

Hinges: delivered by FERMOD;

Lower element: channel section made of acid-proof stainless steel sheet type 1.4301;

Frame: complex and profiled - made of steel sheet, thickness of 1,5mm, galvanized on both sides, coated with polyester paint, standard white colour RAL 9010.

OPTIONAL:

- Cold room with custom dimensions;
- Cold room in custom colours (other than RAL 9010);
- Cold room with window;
- Hinged or sliding doors for cold rooms with custom dimensions;
- Cold room floor made of riffled acid-proof stainless steel sheet, thickness of 3mm;
- Cold room floor made of riffled aluminum sheet, thickness of 3mm.

MODULAR COLD ROOM WITHOUT FLOOR						
Facing – acid-proof stainless steel sheet type 1.4301, with mat surface 2B						
width (mm)	length (mm)	height (H) (mm)	thickness of the walls (mm)	Price of the cold room	Price of the doors	Total net price (EURO)
1310	2100	2100	80	2865 €	823 €	3688 €
1310	3250	2100	80	3928 €	823 €	4751 €
1310	4400	2100	80	4992 €	823 €	5814 €
2460	2100	2100	80	4081 €	823 €	4903 €
2460	3250	2100	80	5366 €	823 €	6189 €
2460	4400	2100	80	6651 €	823 €	7474 €
width (mm)	length (mm)	height (H) (mm)	thickness of the walls (mm)	Price of the cold room	Price of the doors	Total net price (EURO)
1310	2100	2500	80	3323 €	823 €	4145 €
1310	3250	2500	80	4541 €	823 €	5363 €
1310	4400	2500	80	5758 €	823 €	6581 €
2460	2100	2500	80	4693 €	823 €	5516 €
2460	3250	2500	80	6133 €	823 €	6955 €
2460	4400	2500	80	7572 €	823 €	8395 €

MODULAR COLD ROOM WITHOUT FLOOR

Facing of the cold room: acid-proof stainless steel sheet type 1.4301, thickness of 0,8mm, standard surface 2B;

Thickness of cold room walls: 80mm, produced on the press, by high pressure injection of PUR foam into door framework;

Joints: quick-installation Camlock system.

DRK-N-60 - Premium hinged stainless doors for cold rooms.

Door leaf: thickness of 60mm made of folded steel sheet;

Door finish: acid-proof stainless steel sheet thickness of 0,8mm, with mat surface 2B or polished 4N (OPTIONAL);

Door leaf core: polyurethane foam, minimal density of 40 kg/m³;

Lock: delivered by FERMOD;

Hinges: delivered by FERMOD;

Lower element: channel section made of acid-proof stainless steel sheet type 1.4301;

Frame: complex and profiled - made of acid-proof stainless steel sheet, type 1.4301 with mat surface 2B or polished 4N (OPTIONAL).

OPTIONAL:

- Cold room with custom dimensions;
- Cold room made of acid-proof stainless polished or grained steel sheets;
- Cold room with window;
- Hinged or sliding doors for cold rooms with custom dimensions.

MODULAR COLD ROOM WITH FLOOR						
Facing – acid-proof stainless steel sheet type 1.4301, with mat surface 2B						
width (mm)	length (mm)	height (H) (mm)	thickness of the walls (mm)	Price of the cold room	Price of the doors	Total net price (EURO)
1310	2100	2100	80	3329 €	823 €	4151 €
1310	3250	2100	80	4646 €	823 €	5469 €
1310	4400	2100	80	5963 €	823 €	6786 €
2460	2100	2100	80	4952 €	823 €	5774 €
2460	3250	2100	80	6714 €	823 €	7536 €
2460	4400	2100	80	8476 €	823 €	9298 €
width (mm)	length (mm)	height (H) (mm)	thickness of the walls (mm)	Price of the cold room	Price of the doors	Total net price (EURO)
1310	2100	2500	80	3787 €	823 €	4609 €
1310	3250	2500	80	5258 €	823 €	6081 €
1310	4400	2500	80	6730 €	823 €	7552 €
2460	2100	2500	80	5564 €	823 €	6386 €
2460	3250	2500	80	7480 €	823 €	8303 €
2460	4400	2500	80	9397 €	823 €	10219 €

MODULAR COLDROOM WITH FLOOR

Facing of the cold room: acid-proof stainless steel sheet type 1.4301, thickness of 0,8mm, standard surface 2B;

Thickness of cold room walls: 80mm, produced on the press, by high pressure injection of PUR foam into door framework;

Joints: quick-installation Camlock system.

DRK-N-60 - Premium hinged stainless doors for cold rooms.

Door leaf: thickness of 60mm made of folded steel sheet folded;

Door finish: acid-proof stainless steel sheet thickness of 0,8mm, with mat surface 2B or polished 4N (OPTIONAL);

Door leaf core: polyurethane foam, minimal density of 40 kg/m³;

Lock: delivered by FERMOD;

Hinges: delivered by FERMOD;

Lower element: channel section made of acid-proof stainless steel sheet type 1.4301;

Frame: complex and profiled - made of acid-proof stainless steel sheet, type 1.4301 with mat surface 2B or polished 4N (OPTIONAL).

OPTIONAL:

- Cold room with custom dimensions;
- Cold room made of acid-proof stainless polished or grained steel sheets;
- Cold room with window;
- Hinged or sliding doors for cold rooms with custom dimensions.
- Cold room floor made of riffled acid-proof stainless steel sheet, thickness of 3mm;
- Cold room floor made of riffled aluminum sheet, thickness of 3mm.

PRICELIST OF STANDARD MODULAR FREEZER ROOMS SYSTEMS with hinged doors type DRK-L/N 100, 800x2000mm:

MODULAR FREEZER ROOM WITH FLOOR						
Facing – RAL 9010 white steel sheet						
width (mm)	length (mm)	height (H) (mm)	thickness of the walls (mm)	Price of the cold room	Price of the doors	Total net price (EURO)
1310	2100	2200	100	2719 €	782 €	3500 €
1310	3250	2200	100	3790 €	782 €	4571 €
1310	4400	2200	100	4860 €	782 €	5642 €
2460	2100	2200	100	4031 €	782 €	4812 €
2460	3250	2200	100	5453 €	782 €	6234 €
2460	4400	2200	100	6875 €	782 €	7657 €
width (mm)	length (mm)	height (H) (mm)	thickness of the walls (mm)	Price of the cold room	Price of the doors	Total net price (EURO)
1310	2100	2500	100	2990 €	782 €	3771 €
1310	3250	2500	100	4152 €	782 €	4933 €
1310	4400	2500	100	5314 €	782 €	6096 €
2460	2100	2500	100	4393 €	782 €	5175 €
2460	3250	2500	100	5907 €	782 €	6688 €
2460	4400	2500	100	7420 €	782 €	8202 €

MODULAR FREEZER ROOM WITH FLOOR

Facing of the freezer room: steel sheet, thickness 0,75mm, coated with polyester paint, standard white colour (RAL 9010);

Thickness of freezer room walls: 100mm, produced on the press, by high pressure injection of PUR foam into door framework;

Joints: quick-installation Camlock system.

DRK-L-100 - Premium hinged painted doors for freezer rooms.

Door leaf: thickness of 100mm made of folded steel sheet folded;

Door finish: steel sheet thickness of 0,75mm, galvanized on both sides, coated with polyester paint in standard white colour RAL 9010;

Door leaf core: polyurethane foam, minimal density of 40 kg/m³;

Lock: delivered by FERMOD;

Hinges: delivered by FERMOD;

Frame: complex and profiled - made of steel sheet, thickness of 1,5mm, galvanized on both sides, coated with polyester paint in standard white colour RAL 9010.

OPTIONAL:

- Freezer rooms with custom dimensions;
- Freezer room in custom colours (other than RAL 9010);
- Freezer rooms with window;
- Hinged or sliding doors for freezer rooms with custom dimensions;
- Freezer room floor made of riffled acid-proof stainless steel sheet, thickness of 3mm;
- Freezer room floor made of riffled aluminum sheet, thickness of 3mm;
- Strip curtains made of PVC.

MODULAR FREEZER ROOM WITH FLOOR						
Facing – acid-proof stainless steel sheet type 1.4301, with mat surface 2B						
width (mm)	length (mm)	height (H) (mm)	thickness of the walls (mm)	Price of the cold room	Price of the doors	Total net price (EURO)
1310	2100	2200	100	3956 €	1073 €	5028 €
1310	3250	2200	100	5514 €	1073 €	6586 €
1310	4400	2200	100	7071 €	1073 €	8144 €
2460	2100	2200	100	5865 €	1073 €	6937 €
2460	3250	2200	100	7933 €	1073 €	9006 €
2460	4400	2200	100	10000 €	1073 €	11073 €
width (mm)	length (mm)	height (H) (mm)	thickness of the walls (mm)	Price of the cold room	Price of the doors	Total net price (EURO)
1310	2100	2500	100	4350 €	1073 €	5423 €
1310	3250	2500	100	6041 €	1073 €	7114 €
1310	4400	2500	100	7732 €	1073 €	8804 €
2460	2100	2500	100	6392 €	1073 €	7465 €
2460	3250	2500	100	8594 €	1073 €	9666 €
2460	4400	2500	100	10796 €	1073 €	11868 €

MODULAR FREEZER ROOM WITH FLOOR

Facing of the freezer room: acid-proof stainless steel sheet type 1.4301, thickness of 0,8mm, standard surface 2B;

Thickness of freezer room walls: 100mm, produced on the press, by high pressure injection of PUR foam into door framework;

Joints: quick-installation Camlock system.

DRK-N-100 - Premium hinged stainless doors for cold rooms.

Door leaf: thickness of 100mm made of folded steel sheet;

Door finish: acid-proof stainless steel sheet thickness of 0,8mm, with mat surface 2B or polished 4N (OPTIONAL);

Door leaf core: polyurethane foam, minimal density of 40 kg/m³;

Lock: delivered by FERMOD;

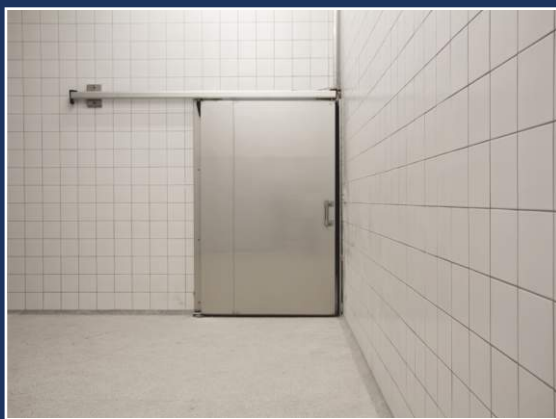
Hinges: delivered by FERMOD;

Frame: complex and profiled - made of acid-proof stainless steel sheet, type 1.4301 with mat surface 2B or polished 4N (OPTIONAL).

OPTIONAL:

- Freezer rooms with custom dimensions;
- Freezer room made of acid-proof stainless polished or grained steel sheets;
- Freezer rooms with window;
- Hinged or sliding doors for freezer rooms with custom dimensions.
- Freezer room floor made of riffled acid-proof stainless steel sheet, thickness of 3mm;
- Freezer room floor made of riffled aluminum sheet, thickness of 3mm.
- Strip curtains made of PVC.

www.paneltech.pl



PANELTECH[®]
MODERN BUILDING