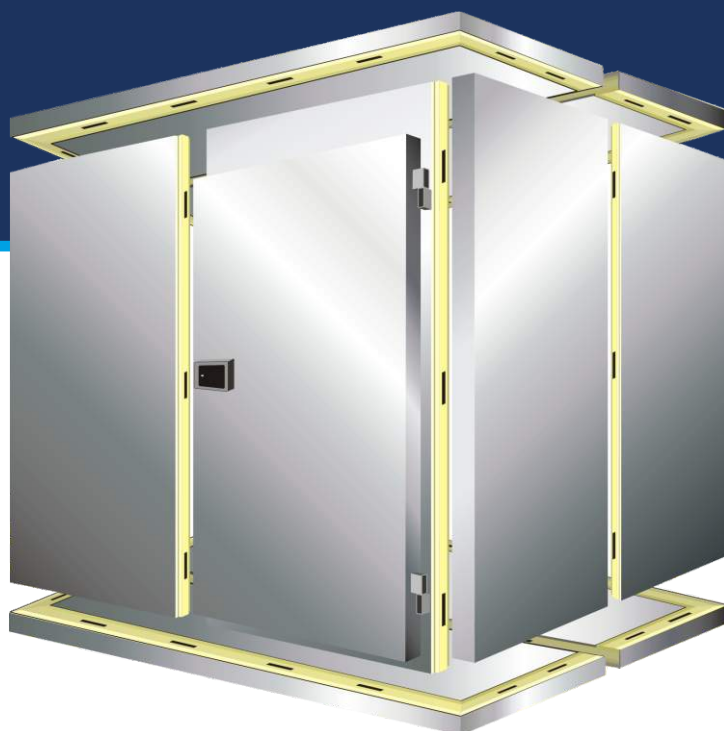


## MODULAR COLD ROOMS



High quality equipment  
and automatic

PaNELTECH Sp. z o.o.  
41-508 Chorzów  
ul. Michałkowicka 24  
tel. 32 245 91 41  
fax 32 245 91 39  
drzwi@paneltech.pl

version 2022.2

[www.paneltech.pl](http://www.paneltech.pl)



**Modular cold rooms system PaNELTECH** is based on steel sheets with polyurethane core, which are joined with each other by special camlock system. This solution enables an easy and fast assembly and disassembly of the cold room, as well as its further relocation or expansion by adding additional modules. Thanks to its simplicity the assembly is cheap and time-sparing. It can be done with just 2 persons. Our cold rooms distinguish themselves with high quality, excellent heat insulation value and esthetic qualities. The cold rooms are equipped with hinged or sliding doors with FERMOD accessories. PaNELTECH cold rooms meet European hygienic and technical standards.

**Panel technical data:**

- **Facing:** steel sheet, thickness 0,75mm, coated with polyester paint in standard white colour RAL 9010 or acid-proof stainless steel type 1.4301, thickness 0,8 mm;
- **Core material:** polyurethane foam, density of 40 kg/m<sup>3</sup>;
- **Jointing system:** Camlock joints, ensuring exact and tight connection between all the edges;
- **Thickness of cold room walls:** 80mm;
- **Thickness of freezer room walls:** 100mm.

**Panel dimensions:**

- **wall panel for cold rooms:** width - 1150mm, maximal length - 2700mm, thickness - 80mm;
- **corner panel for cold rooms:** width - 1050mm, maximal length - 2700mm, thickness - 80mm;
- **roof/floor panel for cold rooms:** width - 1050/1150mm, maximal length - 2700mm, thickness - 80mm;
- **wall panel for freezer rooms:** width - 1150mm, maximal length - 2600mm, thickness - 100mm;
- **corner panel for freezer rooms:** width - 1050mm, maximal length - 2600mm, thickness - 100mm;
- **roof/floor panel for freezer rooms:** width - 1050/1150mm, maximal length - 2600mm, thickness - 100mm.

**Standard external dimensions of the cold room and freezer rooms:**

- 1310x2100x2100/2200\* (h) mm;
- 1310x3250x2100/2200\* (h) mm;
- 1310x4400x2100/2200\* (h) mm;
- 2460x2100x2100/2200\* (h) mm;
- 2460x3250x2100/2200\* (h) mm;
- 2460x4400x2100/2200\* (h) mm;
- custom dimensions on request.

\* cold room with a floor

**Applications:**

- Hotels, restaurants, fast-foods;
- Food processing facilities;
- Milk and milk products producers and distributors;
- Sea food processing facilities and storehouses;
- Fruits and vegetables processing facilities and storehouses;
- Bakeries;
- Supermarkets;
- Others.

## PRICELIST OF STANDARD MODULAR COLD ROOMS SYSTEMS with hinged doors type DRK-L/N 60, 800x2000mm:

<b>MODULAR COLDROOM WITHOUT FLOOR</b>						
<b>Facing – RAL 9010 white steel sheet</b>						
<b>width (mm)</b>	<b>length (mm)</b>	<b>height (H) (mm)</b>	<b>thickness of the walls (mm)</b>	<b>Price of the cold room</b>	<b>Price of the doors</b>	<b>Total net price (EURO)</b>
1310	2100	2100	80	1668 €	602 €	2498 €
1310	3250	2100	80	2288 €	602 €	3179 €
1310	4400	2100	80	2907 €	602 €	3860 €
2460	2100	2100	80	2376 €	602 €	3276 €
2460	3250	2100	80	3125 €	602 €	4100 €
2460	4400	2100	80	3873 €	602 €	4923 €
<b>width (mm)</b>	<b>length (mm)</b>	<b>height (H) (mm)</b>	<b>thickness of the walls (mm)</b>	<b>Price of the cold room</b>	<b>Price of the doors</b>	<b>Total net price (EURO)</b>
1310	2100	2500	80	1935 €	602 €	2791 €
1310	3250	2500	80	2644 €	602 €	3571 €
1310	4400	2500	80	3353 €	602 €	4351 €
2460	2100	2500	80	2733 €	602 €	3669 €
2460	3250	2500	80	3571 €	602 €	4591 €
2460	4400	2500	80	4409 €	602 €	5513 €

### MODULAR COLDROOM WITHOUT FLOOR

**Facing of the cold room:** steel sheet, thickness 0,75mm, coated with polyester paint in standard white colour (RAL 9010);

**Thickness of cold room walls:** 80mm, produced on the press, by high pressure injection of PUR foam into door framework;

**Joints:** quick-installation Camlock system.

#### **DRK-L-60 - Premium hinged painted doors for cold rooms.**

**Door leaf:** thickness of 60mm made of folded steel sheet;

**Door finish:** steel sheet, thickness of 0,75mm, galvanized on both sides, coated with polyester paint in standard white colour RAL 9010;

**Door leaf core:** polyurethane foam, minimal density of 40 kg/m<sup>3</sup>;

**Lock:** delivered by FERMOD;

**Hinges:** delivered by FERMOD;

**Lower element:** channel section made of acid-proof stainless steel sheet type 1.4301;

**Frame:** complex and profiled, made of steel sheet, thickness of 1,5mm, galvanized on both sides, coated with polyester paint in standard white colour RAL 9010.

#### **OPTIONAL:**

- Cold room with custom dimensions;
- Cold room in custom colours (other than RAL 9010);
- Cold room with window;
- Hinged or sliding doors for cold rooms with custom dimensions.

MODULAR COLDROOM WITH FLOOR						
Facing – RAL 9010 white steel sheet						
width (mm)	length (mm)	height (H) (mm)	thickness of the walls (mm)	Price of the cold room	Price of the doors	Total net price (EURO)
1310	2100	2100	80	1939 €	602 €	2796 €
1310	3250	2100	80	2706 €	602 €	3640 €
1310	4400	2100	80	3474 €	602 €	4484 €
2460	2100	2100	80	2885 €	602 €	3836 €
2460	3250	2100	80	3911 €	602 €	4965 €
2460	4400	2100	80	4938 €	602 €	6094 €
width (mm)	length (mm)	height (H) (mm)	thickness of the walls (mm)	Price of the cold room	Price of the doors	Total net price (EURO)
1310	2100	2500	80	2205 €	602 €	3089 €
1310	3250	2500	80	3063 €	602 €	4032 €
1310	4400	2500	80	3920 €	602 €	4975 €
2460	2100	2500	80	3241 €	602 €	4228 €
2460	3250	2500	80	4358 €	602 €	5456 €
2460	4400	2500	80	5474 €	602 €	6684 €

## MODULAR COLD ROOM WITH FLOOR

**Facing of the cold room:** steel sheet, thickness 0,75mm, coated with polyester paint in standard white colour (RAL 9010);

**Thickness of cold room walls:** 80mm, produced on the press, by high pressure injection of PUR foam into door framework;

**Walls Joints:** quick-installation Camlock system.

### DRK-L-60 - Premium hinged painted doors for cold rooms.

**Door leaf:** thickness of 60mm made of folded steel sheet;

**Door finish:** steel sheet thickness of 0,75mm, galvanized on both sides, coated with polyester paint in standard white colour RAL 9010;

**Door leaf core:** polyurethane foam, minimal density of 40 kg/m<sup>3</sup>;

**Lock:** delivered by FERMOD;

**Hinges:** delivered by FERMOD;

**Lower element:** channel section made of acid-proof stainless steel sheet type 1.4301;

**Frame:** complex and profiled - made of steel sheet, thickness of 1,5mm, galvanized on both sides, coated with polyester paint, standard white colour RAL 9010.

### OPTIONAL:

- Cold room with custom dimensions;
- Cold room in custom colours (other than RAL 9010);
- Cold room with window;
- Hinged or sliding doors for cold rooms with custom dimensions;
- Cold room floor made of riffled acid-proof stainless steel sheet, thickness of 3mm;
- Cold room floor made of riffled aluminum sheet, thickness of 3mm.

<b>MODULAR COLD ROOM WITHOUT FLOOR</b>						
<b>Facing – acid-proof stainless steel sheet type 1.4301, with mat surface 2B</b>						
<b>width (mm)</b>	<b>length (mm)</b>	<b>height (H) (mm)</b>	<b>thickness of the walls (mm)</b>	<b>Price of the cold room</b>	<b>Price of the doors</b>	<b>Total net price (EURO)</b>
1310	2100	2100	80	2605 €	797 €	3742 €
1310	3250	2100	80	3571 €	797 €	4805 €
1310	4400	2100	80	4538 €	797 €	5869 €
2460	2100	2100	80	3710 €	797 €	4958 €
2460	3250	2100	80	4878 €	797 €	6243 €
2460	4400	2100	80	6047 €	797 €	7528 €
<b>width (mm)</b>	<b>length (mm)</b>	<b>height (H) (mm)</b>	<b>thickness of the walls (mm)</b>	<b>Price of the cold room</b>	<b>Price of the doors</b>	<b>Total net price (EURO)</b>
1310	2100	2500	80	3021 €	797 €	4200 €
1310	3250	2500	80	4128 €	797 €	5417 €
1310	4400	2500	80	5235 €	797 €	6635 €
2460	2100	2500	80	4266 €	797 €	5570 €
2460	3250	2500	80	5575 €	797 €	7010 €
2460	4400	2500	80	6884 €	797 €	8449 €

## MODULAR COLD ROOM WITHOUT FLOOR

**Facing of the cold room:** acid-proof stainless steel sheet type 1.4301, thickness of 0,8mm, standard surface 2B;

**Thickness of cold room walls:** 80mm, produced on the press, by high pressure injection of PUR foam into door framework;

**Joints:** quick-installation Camlock system.

### DRK-N-60 - Premium hinged stainless doors for cold rooms.

**Door leaf:** thickness of 60mm made of folded steel sheet;

**Door finish:** acid-proof stainless steel sheet thickness of 0,8mm, with mat surface 2B or polished 4N (OPTIONAL);

**Door leaf core:** polyurethane foam, minimal density of 40 kg/m<sup>3</sup>;

**Lock:** delivered by FERMOD;

**Hinges:** delivered by FERMOD;

**Lower element:** channel section made of acid-proof stainless steel sheet type 1.4301;

**Frame:** complex and profiled - made of acid-proof stainless steel sheet, type 1.4301 with mat surface 2B or polished 4N (OPTIONAL).

### OPTIONAL:

- Cold room with custom dimensions;
- Cold room made of acid-proof stainless polished or grained steel sheets;
- Cold room with window;
- Hinged or sliding doors for cold rooms with custom dimensions.

<b>MODULAR COLD ROOM WITH FLOOR</b>						
<b>Facing – acid-proof stainless steel sheet type 1.4301, with mat surface 2B</b>						
<b>width (mm)</b>	<b>length (mm)</b>	<b>height (H) (mm)</b>	<b>thickness of the walls (mm)</b>	<b>Price of the cold room</b>	<b>Price of the doors</b>	<b>Total net price (EURO)</b>
1310	2100	2100	80	3026 €	797 €	4206 €
1310	3250	2100	80	4224 €	797 €	5523 €
1310	4400	2100	80	5421 €	797 €	6840 €
2460	2100	2100	80	4501 €	797 €	5828 €
2460	3250	2100	80	6103 €	797 €	7591 €
2460	4400	2100	80	7706 €	797 €	9353 €
<b>width (mm)</b>	<b>length (mm)</b>	<b>height (H) (mm)</b>	<b>thickness of the walls (mm)</b>	<b>Price of the cold room</b>	<b>Price of the doors</b>	<b>Total net price (EURO)</b>
1310	2100	2500	80	3443 €	797 €	4664 €
1310	3250	2500	80	4780 €	797 €	6135 €
1310	4400	2500	80	6118 €	797 €	7607 €
2460	2100	2500	80	5058 €	797 €	6441 €
2460	3250	2500	80	6800 €	797 €	8357 €
2460	4400	2500	80	8543 €	797 €	10274€

## MODULAR COLDROOM WITH FLOOR

**Facing of the cold room:** acid-proof stainless steel sheet type 1.4301, thickness of 0,8mm, standard surface 2B;

**Thickness of cold room walls:** 80mm, produced on the press, by high pressure injection of PUR foam into door framework;

**Joints:** quick-installation Camlock system.

### DRK-N-60 - Premium hinged stainless doors for cold rooms.

**Door leaf:** thickness of 60mm made of folded steel sheet folded;

**Door finish:** acid-proof stainless steel sheet thickness of 0,8mm, with mat surface 2B or polished 4N (OPTIONAL);

**Door leaf core:** polyurethane foam, minimal density of 40 kg/m<sup>3</sup>;

**Lock:** delivered by FERMOD;

**Hinges:** delivered by FERMOD;

**Lower element:** channel section made of acid-proof stainless steel sheet type 1.4301;

**Frame:** complex and profiled - made of acid-proof stainless steel sheet, type 1.4301 with mat surface 2B or polished 4N (OPTIONAL).

### OPTIONAL:

- Cold room with custom dimensions;
- Cold room made of acid-proof stainless polished or grained steel sheets;
- Cold room with window;
- Hinged or sliding doors for cold rooms with custom dimensions.
- Cold room floor made of riffled acid-proof stainless steel sheet, thickness of 3mm;
- Cold room floor made of riffled aluminum sheet, thickness of 3mm.

## PRICELIST OF STANDARD MODULAR FREEZER ROOMS SYSTEMS with hinged doors type DRK-L/N 100, 800x2000mm:

<b>MODULAR FREEZER ROOM WITH FLOOR</b>						
<b>Facing – RAL 9010 white steel sheet</b>						
<b>width (mm)</b>	<b>length (mm)</b>	<b>height (H) (mm)</b>	<b>thickness of the walls (mm)</b>	<b>Price of the cold room</b>	<b>Price of the doors</b>	<b>Total net price (EURO)</b>
1310	2100	2200	100	2472 €	765 €	3560 €
1310	3250	2200	100	3445 €	765 €	4631 €
1310	4400	2200	100	4418 €	765 €	5702 €
2460	2100	2200	100	3665 €	765 €	4873 €
2460	3250	2200	100	4957 €	765 €	6295 €
2460	4400	2200	100	6250 €	765 €	7717 €
<b>width (mm)</b>	<b>length (mm)</b>	<b>height (H) (mm)</b>	<b>thickness of the walls (mm)</b>	<b>Price of the cold room</b>	<b>Price of the doors</b>	<b>Total net price (EURO)</b>
1310	2100	2500	100	2718 €	765 €	3831 €
1310	3250	2500	100	3774 €	765 €	4993 €
1310	4400	2500	100	4831 €	765 €	6156 €
2460	2100	2500	100	3994 €	765 €	5235 €
2460	3250	2500	100	5370 €	765 €	6748 €
2460	4400	2500	100	6746 €	765 €	8262 €

### MODULAR FREEZER ROOM WITH FLOOR

**Facing of the freezer room:** steel sheet, thickness 0,75mm, coated with polyester paint, standard white colour (RAL 9010);

**Thickness of freezer room walls:** 100mm, produced on the press, by high pressure injection of PUR foam into door framework;

**Joints:** quick-installation Camlock system.

#### **DRK-L-100 - Premium hinged painted doors for freezer rooms.**

**Door leaf:** thickness of 100mm made of folded steel sheet folded;

**Door finish:** steel sheet thickness of 0,75mm, galvanized on both sides, coated with polyester paint in standard white colour RAL 9010;

**Door leaf core:** polyurethane foam, minimal density of 40 kg/m<sup>3</sup>;

**Lock:** delivered by FERMOD;

**Hinges:** delivered by FERMOD;

**Frame:** complex and profiled - made of steel sheet, thickness of 1,5mm, galvanized on both sides, coated with polyester paint in standard white colour RAL 9010.

#### **OPTIONAL:**

- Freezer rooms with custom dimensions;
- Freezer room in custom colours (other than RAL 9010);
- Freezer rooms with window;
- Hinged or sliding doors for freezer rooms with custom dimensions;
- Freezer room floor made of riffled acid-proof stainless steel sheet, thickness of 3mm;
- Freezer room floor made of riffled aluminum sheet, thickness of 3mm;
- Strip curtains made of PVC.



<b>MODULAR FREEZER ROOM WITH FLOOR</b>						
<b>Facing – acid-proof stainless steel sheet type 1.4301, with mat surface 2B</b>						
<b>width (mm)</b>	<b>length (mm)</b>	<b>height (H) (mm)</b>	<b>thickness of the walls (mm)</b>	<b>Price of the cold room</b>	<b>Price of the doors</b>	<b>Total net price (EURO)</b>
1310	2100	2200	100	3596€	945 €	4996 €
1310	3250	2200	100	5013€	945 €	6554 €
1310	4400	2200	100	6428€	945 €	8111 €
2460	2100	2200	100	5331€	945 €	6905 €
2460	3250	2200	100	7212€	945 €	8973 €
2460	4400	2200	100	9093€	945 €	11042 €
<b>width (mm)</b>	<b>length (mm)</b>	<b>height (H) (mm)</b>	<b>thickness of the walls (mm)</b>	<b>Price of the cold room</b>	<b>Price of the doors</b>	<b>Total net price (EURO)</b>
1310	2100	2500	100	3955€	945 €	5391 €
1310	3250	2500	100	5492€	945 €	7081 €
1310	4400	2500	100	7029€	945 €	8772 €
2460	2100	2500	100	5811 €	945 €	7432 €
2460	3250	2500	100	7813€	945 €	9634 €
2460	4400	2500	100	9814 €	945 €	11836 €

## MODULAR FREEZER ROOM WITH FLOOR

**Facing of the freezer room:** acid-proof stainless steel sheet type 1.4301, thickness of 0,8mm, standard surface 2B;

**Thickness of freezer room walls:** 100mm, produced on the press, by high pressure injection of PUR foam into door framework;

**Joints:** quick-installation Camlock system.

### DRK-N-100 - Premium hinged stainless doors for cold rooms.

**Door leaf:** thickness of 100mm made of folded steel sheet;

**Door finish:** acid-proof stainless steel sheet thickness of 0,8mm, with mat surface 2B or polished 4N (OPTIONAL);

**Door leaf core:** polyurethane foam, minimal density of 40 kg/m<sup>3</sup>;

**Lock:** delivered by FERMOD;

**Hinges:** delivered by FERMOD;

**Frame:** complex and profiled - made of acid-proof stainless steel sheet, type 1.4301 with mat surface 2B or polished 4N (OPTIONAL).

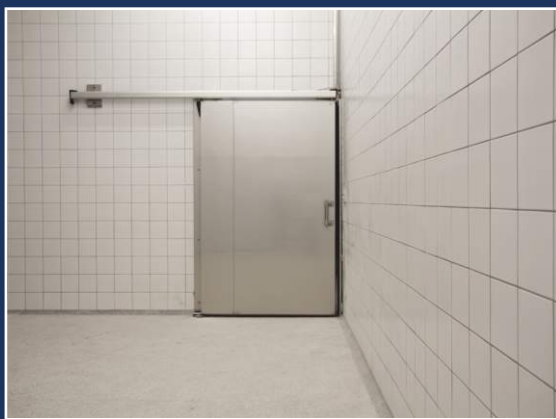
### OPTIONAL:

- Freezer rooms with custom dimensions;
- Freezer room made of acid-proof stainless polished or grained steel sheets;
- Freezer rooms with window;
- Hinged or sliding doors for freezer rooms with custom dimensions.
- Freezer room floor made of riffled acid-proof stainless steel sheet, thickness of 3mm;
- Freezer room floor made of riffled aluminum sheet, thickness of 3mm.
- Strip curtains made of PVC.





[www.paneltech.pl](http://www.paneltech.pl)



**PANELTECH**<sup>®</sup>  
MODERN BUILDING