

INDUSTRIAL DOORS

- COLDROOM AND FREEZER DOORS
- GAS-TIGHT SLIDING DOORS
- SWING DOORS
- UNIVERSAL HINGED DOORS



COLDROOM AND FREEZER HINGED DOOR “DR” TYPE



APPLICATION

DR type door are applied in coldrooms and freezers within the temperature range from -40°C to $+50^{\circ}\text{C}$. The structure of the door ensures its strength and durability. High insulation value has been achieved thanks to polyurethane foam core (PUR).

DOOR LEAF

DR doors are produced in 3 versions. In DRE (ECO) and DRS (STANDARD) version door leaf is made of sandwich panel with PIR core and framed by steel channel section. In DRK (PREMIUM) version door leaf is produced on the press, by high pressure injection of PUR foam into door framework. The density of PUR core is not less than 40 kg/m^3 .

Available thicknesses:

- 60, 80 mm - coldroom door (single and double leaf)
- 100 mm, 120 mm, 150mm, 160mm - freezer door (single and double leaf)

ECO and STANDARD door leaf finish (sandwich panel):

- Galvanized steel sheet (L) thickness 0,5 mm, coated with polyester paint in white colour RAL 9010

PREMIUM door leaf finish:

- Stainless, acid-proof steel (N), type 1.4301, thickness 0,8 mm, mat surface 2B
- Galvanized steel sheet (L) thickness 0,75 mm, coated with polyester paint in white colour RAL 9010

FRAME TYPE

In DRE and DRS version door frame is filled with PUR foam. It is made of stainless, acid-proof steel (N), type 1.4301, thickness 0,8 mm, mat surface 2B or galvanized steel sheet (L) thickness 0,75 mm, coated with polyester paint in white colour (RAL 9010).

Freezer door frame and threshold are equipped in heating system (heating cable, 230 V, 40 W/rm)

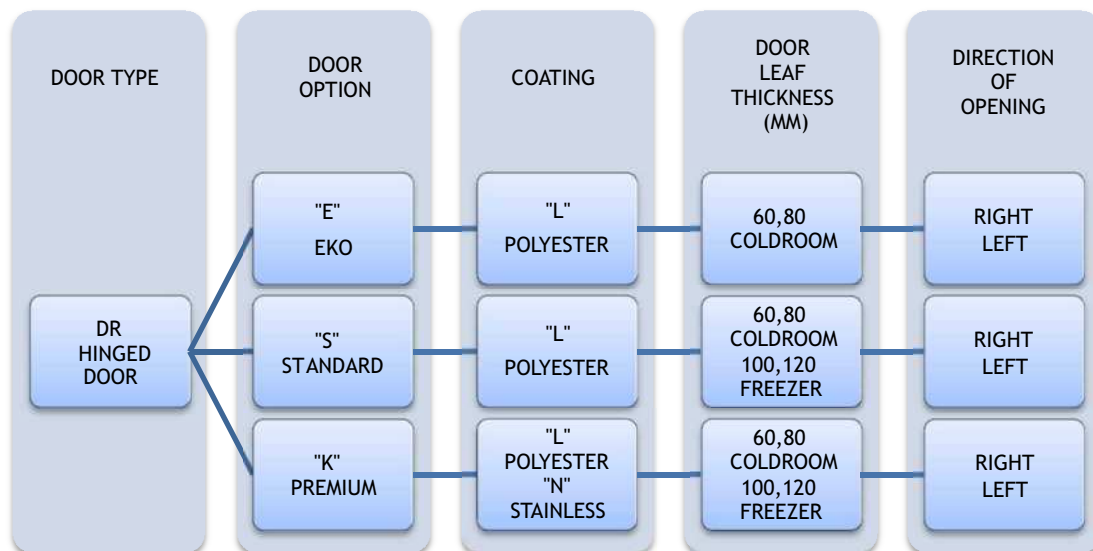
DRE version is equipped in angle bar shaped frame, which is made of galvanized steel sheet (L) thickness 0,75 mm, coated with polyester paint in white colour (RAL 9010).

HINGES

Hinges are delivered by FERMOD. Thanks to door lifting option during opening and closing the hinges prevent the lower gasket from friction.

OPTIONS

- Untypical door leaf finish:
 - Stainless, acid-proof steel (N), type 1.4301, thickness 0,8 mm, grinded surface 4B or grained surface
 - Galvanized steel sheet (L) thickness 0,75 mm, coated with polyester paint other than white RAL 9010
 - panel made of polyester resins reinforced with glass fibre in RAL 9016 with stainless, acid-proof door leaf framing (N), type 1.4301
- Availability to produce door with and without a threshold (lower element is installed in the floor):
- Door windows
 - Round window $\varnothing 280$ mm
 - Window in a different shape and dimension (special enquiry)
 - Execution of opening for a individual glazing
- Door adjusted to top railway system
- Flashing of the door opening



Enquiry/order example:



DRK-L 60 - coldroom hinged door, polyester paint finish, door leaf thickness 60 mm, direction of opening to the right.

HINGED DOORS ECO DRE-L 60 T>0° C (COLDROOM)

Characteristic:

- Door leaf made of sandwich panel with PIR core 60 mm
- Door finish - galvanized steel sheet coated with polyester paint in white colour RAL 9010
- Door leaf framing - steel channel section, made of steel sheet coated with polyester paint in white colour RAL 9010
- Lock - delivered by FERMOD
- Hinges - delivered by FERMOD
- Frame - angle bar shaped, made of steel sheet coated with polyester paint in RAL 9010

DRE-L 60 SINGLE LEAF								
S \ H	1700	1800	1900	2000	2100	2200	2300	2400
700	493	500	508	516	524	531	539	547
800	496	504	511	519	527	535	543	550
900	499	507	515	522	530	538	546	554
1000	505	514	522	530	538	546	554	561
1100	525	533	541	550	559	567	575	583
1200	573	585	596	608	620	631	643	654
1300	627	642	656	671	685	700	715	729
1400	631	645	659	674	689	704	718	732
1500	634	648	663	678	692	707	721	736

DRE-L 60 DOUBLE LEAF						
S \ H	2000	2100	2200	2300	2400	2500
1400	926	941	956	971	986	1001
1600	932	947	962	977	992	1007
1800	938	954	969	983	998	1014
2000	952	968	983	998	1014	1029
2200	966	982	998	1014	1029	1045
2400	1081	1102	1124	1145	1166	1187
2600	1196	1223	1250	1276	1303	1330

STANDARD HINGED DOOR - POLYESTER DRS-L 60 T>0 ° C (COLDROOM)

Characteristic:

- Door leaf made of sandwich panel with PIR core 60 mm
- Door finish - galvanized steel sheet coated with polyester paint in white colour RAL 9010
- Door leaf framing - steel channel section, made of steel sheet coated with polyester paint in white colour RAL 9010
- Lock - delivered by FERMOD
- Hinges - delivered by FERMOD
- Frame - complex and profiled, made of steel sheet coated with polyester paint in RAL 9010
- Lower element - channel section made of stainless, acid-proof steel sheet, type 1.4301

DRS-L 60 SINGLE LEAF									
S \ H	1700	1800	1900	2000	2100	2200	2300	2400	2500
700	588	597	605	614	622	655	689	723	757
800	604	614	623	632	641	677	713	749	785
900	621	630	640	650	660	698	736	775	813
1000	637	648	658	669	679	719	760	800	841
1100	689	701	712	724	735	781	826	871	916
1200	716	729	742	754	768	817	867	917	967
1300	734	747	761	775	789	841	893	946	998
1400	752	766	781	795	810	864	919	974	1 029
1500	770	785	801	815	831	888	946	1 003	1 061

DRS-L 80 DOUBLE LEAF						
S \ H	2000	2100	2200	2300	2400	2500
1400	1 067	1 081	1 096	1 110	1 125	1 139
1500	1 085	1 100	1 116	1 131	1 146	1 161
1600	1 104	1 120	1 135	1 151	1 167	1 183
1700	1 122	1 139	1 155	1 171	1 188	1 204
1800	1 140	1 158	1 175	1 192	1 209	1 226
1900	1 159	1 177	1 194	1 212	1 230	1 247
2000	1 177	1 196	1 214	1 232	1 251	1 269
2100	1 196	1 215	1 234	1 253	1 272	1 290
2200	1 214	1 234	1 254	1 273	1 293	1 312
2300	1 233	1 253	1 273	1 293	1 313	1 334
2400	1 251	1 272	1 293	1 314	1 334	1 355
2500	1 270	1 291	1 313	1 334	1 355	1 377
2600	1 288	1 311	1 333	1 354	1 376	1 398

Options:

- door leaf made of PIR sandwich panel thickness 80 mm - surcharge of 15 EUR/m²
- window, size 400 mm x 600 mm - surcharge of 105 EUR

PREMIUM HINGED DOORS - POLYESTER DRK-L 60 T>0 ° C (COLDROOM)

Characteristic:

- Door leaf thickness 60 mm, produced on the press, by high pressure injection of PUR foam into door framework
- Door finish - galvanized steel sheet coated with polyester paint in white colour RAL 9010
- Door leaf core - polyurethane foam, density of minimum 40 kg/m³
- Lock - delivered by FERMOD
- Hinges - delivered by FERMOD
- Frame - complex and profiled, made of steel sheet coated with polyester paint in RAL 9010
- Lower element - channel section made of stainless, acid-proof steel sheet, type 1.4301

DRK-L 60 SINGLE LEAF									
S \ H	1700	1800	1900	2000	2100	2200	2300	2400	2500
700	623	637	651	665	679	694	756	772	787
800	640	649	659	669	687	705	772	791	811
900	656	667	677	687	706	725	794	814	834
1000	701	706	712	717	773	783	846	856	866
1100	767	779	791	803	816	828	897	910	923
1200	772	784	796	808	820	844	912	923	933
1300	805	820	834	849	864	878	951	964	976
1400	823	837	851	865	879	894	966	1038	1051
1500	856	871	886	901	917	932	1035	1112	1126

DRK-L 80 DOUBLE LEAF						
S \ H	2000	2100	2200	2300	2400	2500
1400	1141	1154	1168	1182	1196	1209
1500	1152	1171	1190	1209	1228	1246
1600	1164	1188	1212	1236	1259	1283
1700	1187	1210	1237	1265	1293	1320
1800	1211	1232	1263	1295	1326	1357
1900	1234	1255	1289	1324	1359	1394
2000	1257	1277	1315	1354	1392	1431
2100	1265	1299	1336	1372	1409	1468
2200	1272	1321	1356	1391	1426	1537
2300	1275	1343	1402	1409	1442	1607
2400	1279	1364	1449	1470	1504	1677
2500	1283	1386	1496	1531	1567	1747

Options:

- door leaf thickness 80 mm - surcharge of 30 EUR/m²
- window, size 400 mm x 600 mm - surcharge of 105 EUR
- door made in colour other than RAL 9010 - surcharge of 60 EUR/m²

PREMIUM HINGED DOORS - STAINLESS DRK-N 60 T>0 °C (COLDROOM)

Characteristic:

- Door leaf thickness 60 mm, produced on the press, by high pressure injection of PUR foam into door framework
- Door finish - stainless, acid-proof steel, type 1.4301, mat surface 2B or grinded surface 4N (option)
- Door leaf core - polyurethane foam, density of minimum 40 kg/m³
- Lock - delivered by FERMOD
- Hinges - delivered by FERMOD
- Frame - complex and profiled, made of stainless, acid-proof mat surface 2B or grinded surface 4N (option)
- Lower element - channel section made of stainless, acid-proof steel sheet, type 1.4301

DRK-N 60 SINGLE LEAF									
S \ H	1700	1800	1900	2000	2100	2200	2300	2400	2500
700	807	810	831	852	873	893	914	935	953
800	837	857	878	899	918	937	956	976	995
900	866	888	909	930	951	973	994	1015	1036
1000	905	931	956	981	1004	1024	1045	1065	1086
1100	963	987	1011	1036	1060	1085	1109	1134	1158
1200	974	1004	1034	1064	1095	1120	1142	1163	1185
1300	1024	1054	1084	1114	1144	1174	1201	1227	1254
1400	1063	1093	1122	1152	1182	1211	1233	1321	1350
1500	1102	1131	1161	1190	1220	1249	1319	1415	1446

DRK-N 80 DOUBLE LEAF						
S \ H	2000	2100	2200	2300	2400	2500
1400	1379	1421	1463	1505	1547	1590
1500	1401	1443	1485	1527	1569	1611
1600	1424	1466	1508	1549	1591	1633
1700	1469	1505	1548	1591	1634	1677
1800	1514	1544	1588	1632	1676	1721
1900	1559	1583	1628	1673	1719	1764
2000	1604	1621	1668	1715	1761	1808
2100	1649	1660	1689	1736	1783	1852
2200	1694	1699	1711	1757	1804	1940
2300	1716	1742	1771	1778	1825	2028
2400	1739	1785	1832	1855	1904	2116
2500	1761	1828	1893	1932	1983	2203

Options:

- door leaf thickness 80 mm - surcharge of 30 EUR/m²
- window, size 400 mm x 600 mm - surcharge of 105 EUR

STANDARD HINGED DOOR - POLYESTER DRS-L 100 T>-25 °C (FREEZER)

Characteristic:

- Door leaf made of sandwich panel with PIR core 100 mm
- Door finish - galvanized steel sheet coated with polyester paint in white colour RAL 9010
- Door leaf framing - steel channel section, made of steel sheet coated with polyester paint in white colour RAL 9010
- Lock - delivered by FERMOD
- Hinges - delivered by FERMOD
- Frame - complex and profiled, made of steel sheet coated with polyester paint in RAL 9010
- Lower element - channel section made of stainless, acid-proof steel sheet, type 1.4301

DRS-L 100 SINGLE LEAF									
S \ H	1700	1800	1900	2000	2100	2200	2300	2400	2500
700	754	765	775	786	797	824	852	880	907
800	776	790	805	820	835	856	878	900	922
900	797	816	835	853	872	888	904	920	936
1000	819	835	851	867	884	905	926	948	970
1100	845	859	873	887	901	929	956	984	1012
1200	855	873	890	908	926	950	973	997	1021
1300	864	885	907	929	951	977	1003	1030	1073
1400	900	922	945	968	991	1011	1031	1074	1156
1500	936	960	984	1007	1031	1042	1089	1137	1183

DRS-L 100 DOUBLE LEAF						
S \ H	2000	2100	2200	2300	2400	2500
1400	1466	1492	1511	1535	1557	1577
1500	1491	1514	1537	1561	1585	1610
1600	1516	1539	1563	1588	1615	1643
1700	1539	1563	1588	1615	1643	1670
1800	1563	1589	1615	1643	1725	1752
1900	1703	1730	1752	1780	1813	1840
2000	1725	1752	1784	1811	1840	1867
2100	1752	1780	1810	1839	1867	1896
2200	1777	1807	1835	1866	1895	1925
2300	1800	1832	1862	1892	1924	1954
2400	1825	1856	1888	1919	1951	1985
2500	1850	1881	1914	1946	1982	2013

Options:

- door leaf made of PIR sandwich panel thickness 120 mm - surcharge of 15 EUR/m²
- door leaf made of PIR sandwich panel thickness 160 mm - surcharge of 40 EUR/m²
- window, size 400 mm x 600 mm - surcharge of 105 EUR

PREMIUM HINGED DOORS - POLYESTER DRK-L 100 T>-25 °C (FREEZER)

Characteristic:

- Door leaf thickness 100 mm, produced on the press, by high pressure injection of PUR foam into door framework
- Door finish - galvanized steel sheet coated with polyester paint in white colour RAL 9010
- Door leaf core - polyurethane foam, density of minimum 40 kg/m³
- Lock - delivered by FERMOD
- Hinges - delivered by FERMOD
- Frame - complex and profiled, made of steel sheet coated with polyester paint in RAL 9010
- Lower element - channel section made of stainless, acid-proof steel sheet, type 1.4301

DRK-L 100 SINGLE LEAF									
S \ H	1700	1800	1900	2000	2100	2200	2300	2400	2500
700	818	832	847	861	875	889	903	917	932
800	844	859	874	890	905	920	935	951	966
900	870	886	902	919	935	952	968	984	1000
1000	911	933	955	976	1024	1045	1052	1053	1054
1100	918	935	952	969	1013	1014	1027	1047	1067
1200	957	979	1001	1022	1043	1062	1081	1100	1119
1300	986	1007	1028	1050	1071	1093	1106	1121	1143
1400	1014	1036	1058	1079	1101	1122	1136	1182	1231
1500	1043	1065	1087	1109	1131	1153	1196	1248	1300

DRK-L 100 DOUBLE LEAF						
S \ H	2000	2100	2200	2300	2400	2500
1400	1631	1657	1676	1699	1721	1741
1500	1655	1678	1702	1725	1750	1774
1600	1680	1703	1728	1752	1780	1807
1700	1703	1728	1752	1780	1807	1835
1800	1728	1754	1780	1807	1889	1917
1900	1867	1895	1917	1944	1977	2004
2000	1889	1917	1948	1976	2004	2032
2100	1917	1944	1974	2003	2032	2060
2200	1941	1971	1999	2030	2059	2089
2300	1965	1996	2026	2056	2088	2118
2400	1989	2021	2052	2084	2115	2149
2500	2014	2045	2078	2110	2147	2177

Options:

- door leaf thickness 120 mm - surcharge of 30 EUR/m²
- door leaf made of PIR sandwich panel thickness 150 mm - surcharge of 60 EUR/m²
- window, size 400 mm x 600 mm - surcharge of 105 EUR
- door made in colour other than RAL 9010 - surcharge of 60 EUR/m²

PREMIUM HINGED DOORS - STAINLESS DRK-N 100 T>-25 °C (FREEZER)

Characteristic:

- Door leaf thickness 100 mm, produced on the press, by high pressure injection of PUR foam into door framework
- Door finish - stainless, acid-proof steel, type 1.4301, mat surface 2B or grinded surface 4N (option)
- Door leaf core - polyurethane foam, density of minimum 40 kg/m³
- Lock - delivered by FERMOD
- Hinges - delivered by FERMOD
- Frame - complex and profiled, made of stainless, acid-proof mat surface 2B or grinded surface 4N (option)
- Lower element - channel section made of stainless, acid-proof steel sheet, type 1.4301

DRK-N 100 SINGLE LEAF									
S \ H	1700	1800	1900	2000	2100	2200	2300	2400	2500
700	1002	1028	1053	1078	1104	1129	1155	1180	1205
800	1041	1067	1093	1120	1147	1175	1203	1231	1259
900	1079	1108	1136	1164	1194	1223	1253	1283	1312
1000	1138	1171	1204	1237	1266	1300	1335	1370	1404
1100	1160	1188	1216	1243	1271	1316	1360	1405	1450
1200	1194	1225	1256	1287	1318	1349	1403	1457	1511
1300	1232	1264	1297	1329	1362	1395	1424	1458	1516
1400	1269	1304	1338	1372	1406	1440	1498	1557	1624
1500	1307	1343	1379	1415	1451	1486	1545	1612	1679

DRK-N 100 DOUBLE LEAF						
S \ H	2000	2100	2200	2300	2400	2500
1400	1988	2021	2054	2086	2122	2152
1500	2026	2059	2095	2128	2163	2196
1600	2059	2095	2130	2166	2204	2240
1700	2095	2133	2170	2207	2245	2281
1800	2255	2293	2331	2370	2410	2448
1900	2290	2330	2370	2410	2451	2505
2000	2327	2367	2410	2451	2492	2546
2100	2363	2404	2451	2489	2533	2588
2200	2410	2464	2505	2538	2588	2629
2300	2451	2505	2546	2579	2623	2683
2400	2492	2533	2588	2618	2664	2738
2500	2533	2560	2615	2656	2711	2793

Options:

- door leaf thickness 120 mm - surcharge of 30 EUR/m²
- door leaf made of PIR sandwich panel thickness 150 mm - surcharge of 60 EUR/m²
- window, size 400 mm x 600 mm - surcharge of 105 EUR

PREMIUM HINGED FLUSH DOORS - POLYESTER DRKZ-L 80 T>0°C (COLDROOM)

Characteristic:

- Door leaf thickness 80 mm, produced on the press, by high pressure injection of PUR foam into door framework;
- Door finish - steel channel section, made of steel sheet coated with polyester paint in white colour RAL 9010
- Door leaf core - polyurethane foam, density of minimum min. 40 kg/m³
- Lock - delivered by FERMOD
- Hinges - delivered by FERMOD/RAHRBACH
- The frame flush with the external wall surface - complex and profiled, made of steel sheet coated with polyester paint in RAL 9010
- Lower element- channel section made of stainless, acid-proof steel sheet, type 1.4301

DRKZ-L 80 SINGLE LEAF									
S \ H	1700	1800	1900	2000	2100	2200	2300	2400	2500
700	810	828	846	864	883	902	920	940	958
800	832	845	857	870	893	917	940	964	987
900	857	870	883	895	924	947	970	994	1017
1000	917	924	932	939	1008	1020	1032	1045	1057
1100	986	1002	1017	1033	1049	1065	1080	1096	1111
1200	994	1010	1026	1042	1058	1087	1100	1129	1156
1300	1025	1044	1062	1081	1099	1118	1133	1163	1201

DRKZ-L 80 DOUBLE LEAF						
S \ H	2000	2100	2200	2300	2400	2500
1400	1249	1264	1279	1294	1309	1324
1500	1262	1283	1303	1324	1344	1365
1600	1275	1301	1327	1353	1379	1405
1700	1300	1325	1355	1385	1415	1446
1800	1326	1350	1384	1418	1452	1486
1900	1351	1374	1412	1450	1488	1527
2000	1377	1398	1440	1483	1525	1567
2100	1385	1422	1463	1503	1543	1608
2200	1393	1447	1485	1523	1561	1634
2300	1397	1470	1536	1543	1579	1661
2400	1401	1494	1587	1622	1656	1733
2500	1405	1517	1596	1661	1733	1806

Options:

- window, size 400 mm x 600 mm - surcharge of 105 EUR
- door made in colour other than RAL 9010 - surcharge of 60 EUR/m²

PREMIUM HINGED FLUSH DOORS - STAINLESS DRKZ-N 80 T>0°C (COLDROOM)

Characteristic:

- Door leaf thickness 80 mm, produced on the press, by high pressure injection of PUR foam into door framework;
- Door finish - stainless, acid-proof steel, type 1.4301, mat surface 2B or grinded surface 4N (option)
- Door leaf core - polyurethane foam, density of minimum min. 40 kg/m³
- Lock - delivered by FERMOD
- Hinges - delivered by FERMOD/RAHRBACH
- The frame flush with the external wall surface - complex and profiled, made of stainless, acid-proof mat surface 2B or grinded surface 4N (option)
- Lower element- channel section made of stainless, acid-proof steel sheet, type 1.4301

DRKZ-N 80 SINGLE LEAF									
S \ H	1700	1800	1900	2000	2100	2200	2300	2400	2500
700	968	971	997	1021	1046	1071	1096	1121	1143
800	1004	1028	1053	1078	1101	1124	1147	1170	1193
900	1039	1065	1090	1115	1141	1167	1192	1218	1243
1000	1086	1116	1146	1177	1204	1229	1253	1278	1303
1100	1117	1146	1174	1203	1231	1259	1287	1316	1345
1200	1152	1188	1223	1259	1295	1325	1351	1376	1402
1300	1212	1247	1282	1318	1353	1389	1420	1468	1506

DRKZ-N 80 DOUBLE LEAF						
S \ H	2000	2100	2200	2300	2400	2500
1400	1535	1582	1629	1676	1723	1770
1500	1560	1607	1654	1700	1747	1794
1600	1585	1632	1678	1725	1772	1818
1700	1635	1675	1723	1771	1819	1867
1800	1685	1718	1767	1817	1866	1915
1900	1690	1716	1765	1815	1864	1913
2000	1739	1758	1809	1859	1910	1961
2100	1788	1800	1832	1882	1933	2008
2200	1837	1842	1855	1905	1956	2039
2300	1861	1889	1921	1928	1979	2132
2400	1885	1936	1987	2047	2136	2238
2500	1910	1982	2053	2132	2225	2318

Options:

- window, size 400 mm x 600 mm - surcharge of 105 EUR

PREMIUM HINGED FLUSH DOORS - POLYESTER DRKZ-L 100 T>-25°C (FREEZER)

Characteristic:

- Door leaf thickness 100 mm, produced on the press, by high pressure injection of PUR foam into door framework;
- Door finish - steel channel section, made of steel sheet coated with polyester paint in white colour RAL 9010
- Door leaf core - polyurethane foam, density of minimum min. 40 kg/m³
- Lock - delivered by FERMOD
- Hinges - delivered by FERMOD/RAHRBACH
- the frame flush with the external wall surface - complex and profiled, made of steel sheet coated with polyester paint in RAL 9010
- Lower element- channel section made of stainless, acid-proof steel sheet, type 1.4301

DRKZ-L 100 SINGLE LEAF									
S \ H	1700	1800	1900	2000	2100	2200	2300	2400	2500
700	936	953	969	985	1001	1017	1034	1050	1066
800	966	984	1001	1018	1036	1053	1071	1088	1106
900	995	1014	1033	1052	1070	1089	1108	1127	1145
1000	1043	1068	1093	1118	1172	1196	1205	1205	1206
1100	1090	1110	1131	1151	1203	1204	1220	1244	1268
1200	1137	1163	1189	1214	1239	1262	1284	1307	1329
1300	1171	1196	1222	1247	1272	1298	1314	1371	1428

DRKZ-L 100 DOUBLE LEAF						
S \ H	2000	2100	2200	2300	2400	2500
1400	1777	1806	1827	1852	1876	1898
1500	1804	1830	1855	1880	1907	1934
1600	1831	1856	1883	1910	1940	1970
1700	1856	1883	1910	1940	1970	2000
1800	1883	1912	1940	1970	2059	2089
1900	2035	2065	2089	2119	2155	2185
2000	2059	2089	2123	2153	2185	2215
2100	2089	2119	2152	2183	2215	2246
2200	2116	2149	2179	2213	2244	2277
2300	2141	2176	2209	2241	2276	2309
2400	2168	2203	2237	2271	2306	2343
2500	2195	2229	2265	2300	2340	2373

Options:

- window, size 400 mm x 600 mm - surcharge of 105 EUR
- door made in colour other than RAL 9010 - surcharge of 60 EUR/m²

PREMIUM HINGED FLUSH DOORS - STAINLESS DRKZ-N 100 T>-25°C (FREEZER)

Characteristic:

- Door leaf thickness 100 mm, produced on the press, by high pressure injection of PUR foam into door framework;
- Door finish - stainless, acid-proof steel, type 1.4301, mat surface 2B or grinded surface 4N (option)
- Door leaf core - polyurethane foam, density of minimum min. 40 kg/m³
- Lock - delivered by FERMOD
- Hinges - delivered by FERMOD/RAHRBACH
- The frame flush with the external wall surface - made of stainless, acid-proof mat surface 2B or grinded surface 4N (option)
- Lower element - channel section made of stainless, acid-proof steel sheet, type 1.4301

DRKZ-N 100 SINGLE LEAF									
S \ H	1700	1800	1900	2000	2100	2200	2300	2400	2500
700	1176	1206	1235	1265	1295	1324	1354	1384	1414
800	1221	1252	1282	1313	1346	1378	1411	1444	1477
900	1266	1299	1332	1366	1400	1435	1470	1504	1539
1000	1335	1374	1412	1450	1485	1525	1566	1606	1647
1100	1348	1380	1412	1445	1477	1529	1581	1633	1685
1200	1414	1450	1487	1524	1560	1597	1661	1725	1762
1300	1458	1497	1535	1574	1613	1651	1686	1721	1794

DRKZ-N 100 DOUBLE LEAF						
S \ H	2000	2100	2200	2300	2400	2500
1400	2187	2223	2259	2295	2334	2367
1500	2229	2265	2304	2340	2379	2416
1600	2265	2304	2343	2382	2425	2464
1700	2304	2346	2387	2428	2470	2509
1800	2480	2522	2565	2607	2650	2693
1900	2519	2563	2607	2650	2696	2756
2000	2560	2604	2650	2696	2741	2801
2100	2599	2644	2696	2738	2786	2846
2200	2650	2711	2756	2792	2846	2891
2300	2696	2756	2801	2837	2885	2952
2400	2741	2786	2846	2879	2931	3012
2500	2786	2816	2876	2922	2982	3072

Options:

- door leaf thickness 120 mm - surcharge of 30 EUR/m²
- window, size 400 mm x 600 mm - surcharge of 105 EUR



COLDROOM AND FREEZER SLIDING DOORS, “DP” TYPE

APPLICATION

DP doors are applied in coldrooms and freezers within the temperature from -40°C to $+50^{\circ}\text{C}$. The structure of the door ensures its strength and durability. High insulation value has been achieved thanks to polyurethane foam core (PUR).

DP - lightweight, up to 120 kg

DP - heavyweight, up to 400 kg

DOOR LEAF

DP doors are available in 2 versions: In DPS (STANDARD) version door leaf is made of sandwich panel with PIR core and framed by steel channel section. In DPK (PREMIUM) version door leaf is produced on the press, by high pressure injection of PUR foam into door framework. The density of PUR core is not less than $40\text{kg}/\text{m}^3$.

Available thicknesses:

- 60, 80 mm - coldroom door (single and double leaf)
- 100, 120, 150, 160mm - freezer door (single and double leaf)

STANDARD door leaf finish (sandwich panel):

- Galvanized steel sheet (L) thickness 0,5 mm, coated with polyester paint in white colour RAL 9010

PREMIUM door leaf finish:

- Stainless, acid-proof steel (N), type 1.4301, thickness 0,8 mm, mat surface 2B
- Galvanized steel sheet (L) thickness 0,75 mm, coated with polyester paint in white colour RAL 9010

Door leaf is equipped with gasket delivered by FERMOD (F).

FRAME TYPE

In both DPS and DPK version door frame is filled with PUR foam. It is made of stainless, acid-proof steel (N), type 1.4301, thickness 1,5 mm, mat surface 2B or galvanized steel sheet (L) thickness 1,5 mm, coated with polyester paint in white colour (RAL 9010).

Freezer door frame and threshold are equipped in heating system (heating cable, 230 V, 40 W/rm).

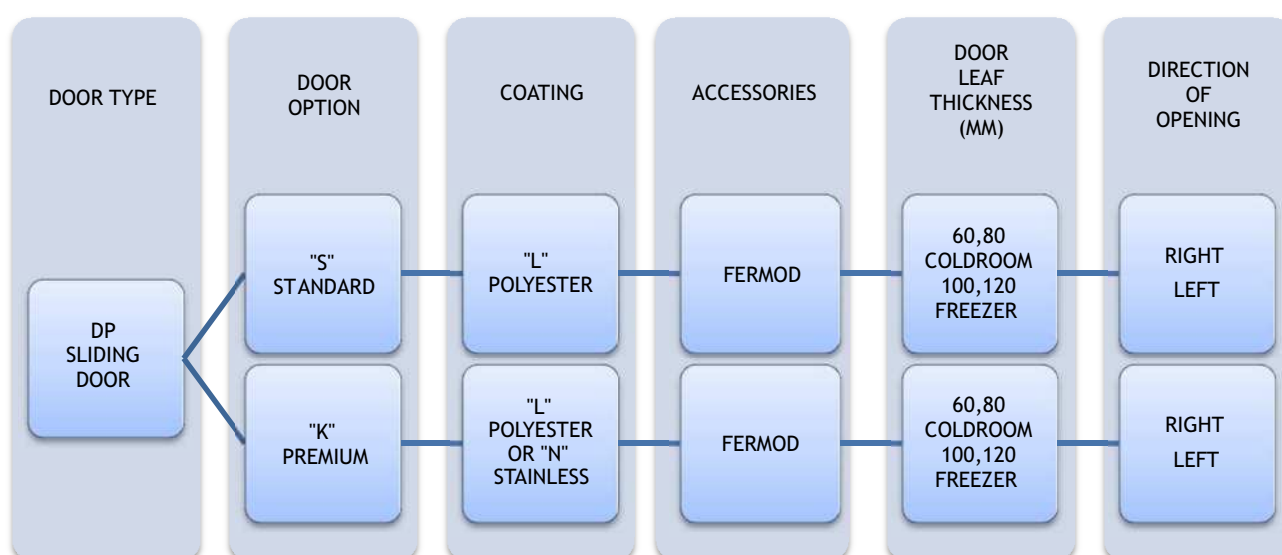
Lock is delivered by FERMOD (F). It is equipped with patent insert with possibility of emergency opening from the inside even if the door is locked.

ACCESSORIES

- FERMOD accessories (F), aluminium rail - lightweight type
- FERMOD accessories (F), galvanized steel or stainless steel rail - heavyweight type
- FERMOD accessories (F), stainless steel rail - lightweight type (option)
- FERMOD accessories (F), stainless steel rail - heavyweight type (option)

OPTIONS

- Untypical door leaf finish:
 - Stainless, acid-proof steel (N), type 1.4301, thickness 0,8 mm, grinded surface 4B or grained surface
 - Galvanized steel sheet (T) thickness 0,75 mm, coated with polyester paint other than white
 - panel made of polyester resins reinforced with glass fibre in RAL 9016 with stainless, acid-proof door leaf framing (N), type 1.4301
- Availability to produce door with and without a threshold (lower element is installed in the floor)
- Flashing of the door opening
- Application of automatic kits delivered by FERMOD (F)
- Door windows:
 - Round window $\varnothing 280$ mm
 - Window in a different shape (special enquiry)
- Door adjusted to top railway system



Enquiry/order example:



DPK-NF 60 - Premium coldroom sliding door, stainless steel finish, FERMOD accessories, door leaf thickness 60 mm, direction of opening to the right.

STANDARD SLIDING DOOR - POLYESTER - FERMOD ACCESSORIES - DPS-LF 60 T>0 °C (COLDROOM)

Characteristic:

- Door leaf made of sandwich panel with PIR core 60 mm
- Door finish - galvanized steel sheet, coated with polyester paint in white colour RAL 9010
- Door leaf framing - steel channel section, made of stainless, acid-proof steel sheet, type 1.4301
- Frame - complex and profiled, made of steel sheet coated with polyester paint in RAL 9010
- Accessories - delivered by FERMOD, made of aluminium
- Lower element - channel section made of stainless, acid-proof steel sheet, type 1.4301

DPS-LF 60 SINGLE LEAF								
S \ H	1800	1900	2000	2100	2200	2300	2400	2500
800	1329	1338	1348	1358	1368	1378	1387	1397
900	1347	1358	1369	1380	1390	1401	1412	1422
1000	1366	1378	1390	1401	1413	1424	1436	1448
1100	1459	1471	1483	1495	1507	1519	1531	1543
1200	1504	1518	1531	1544	1557	1570	1584	1597
1300	1575	1590	1604	1619	1633	1648	1662	1677
1400	1614	1629	1645	1660	1676	1691	1706	1722
1500	1655	1671	1687	1703	1720	1736	1752	1768
1600	1695	1712	1729	1746	1763	1781	1798	1815
1700	1813	1831	1848	1866	1883	1901	1918	1936
1800	1832	1850	1869	1887	1905	1924	1942	1960
1900	1879	1898	1917	1937	1951	1966	1981	1996
2000	1926	1946	1966	1986	2006	2027	2047	2067

S \ H	2500	2600	2700	2800	3000	3200	3400	3600	3800	4000
1500	1768	1772	1777	1791	1812	1931	1965	1999	2033	2067
1600	1815	1858	1884	1895	1918	2043	2079	2114	2149	2184
1700	1936	1953	1977	2000	2023	2156	2192	2229	2266	2302
1800	1960	1979	2003	2028	2052	2188	2226	2265	2303	2342
1900	1996	2004	2030	2056	2081	2220	2260	2301	2341	2381
2000	2067	2087	2114	2142	2169	2314	2356	2399	2441	2483
2200	2118	2145	2173	2200	2228	2378	2424	2470	2516	3018
2400	2226	2263	2301	2338	2375	2526	2565	2604	3136	3188
2600	2389	2422	2455	2489	2522	2612	2702	3256	3307	3359
2800	2574	2614	2654	2694	2734	2774	3270	3336	3403	3470
3000	2667	2704	2742	2781	2819	3346	3405	3464	3522	3581

Prices in bold refer to doors with heavy system, door leaf made of PIR sandwich panel thickness 80 mm

Options:

- door leaf made of PIR sandwich panel thickness 80 mm - surcharge of 15 EUR/m²
- window, size 400 mm x 600 mm - surcharge of 105 EUR
- lock with patent insert with possibility of opening from the inside - surcharge of 160 EUR
- handle support (lever) for light-weight door - surcharge of 160 EUR (in heavy-weight door this option is included free of charge)

STANDARD SLIDING DOOR - POLYESTER - FERMOD ACCESSORIES - DPS-LF 60 T>0 °C (COLDROOM)

Characteristic:

- Door leaf made of sandwich panel with PIR core 100 mm
- Door finish - galvanized steel sheet, coated with polyester paint in white colour RAL 9010
- Door leaf framing - steel channel section, made of stainless, acid-proof steel sheet, type 1.4301
- Frame - complex and profiled, made of steel sheet coated with polyester paint in RAL 9010
- Accessories - delivered by FERMOD, made of aluminium
- Lower element - channel section made of stainless, acid-proof steel sheet, type 1.4301

DPS-LF 60 DOUBLE LEAF									
S	H	1800	1900	2000	2100	2200	2300	2400	2500
1000		2818	2825	2838	2850	2863			
1100		2838	2843	2850	2863	2880			
1200		2950	2963	2970	2980	2988	3000		
1300		2975	2983	2993	3000	3013	3025		
1400		3078	3089	3098	3113	3125	3138	3150	3163
1500		3100	3110	3125	3138	3150	3163	3163	3175
1600		3188	3200	3213	3225	3238	3250	3263	3275
1700		3205	3218	3233	3248	3260	3270	3288	3305
1800		3228	3240	3250	3263	3275	3288	3300	3325
1900		3325	3338	3350	3363	3375	3388	3400	3413
2000		3350	3363	3375	3388	3400	3413	3425	3438

S	H	2200	2500	2800	3000	3500	4000	4500	4800
2200		3550	3600	3650	3700				
2500		6100	6153	6200	6250	6375	6500	6625	6725
2700		6200	6225	6275	6325	6450	6588	6725	6825
3000		6438	6490	6539	6575	6658	6750	6828	6913
3200		6513	6575	6625	6663	6750	6838	6925	7013
3400		6563	6618	6675	6710	6805	6900	7033	7125
3600		6815	6875	6938	6975	7075	7170	7325	7405
3800		6863	6925	6988	7025	7133	7230	7375	7475
4000		6913	6975	7038	7083	7205	7375	9975	7575
4100		7330	7400	7470	7514	7625	7783	7900	7966
4400		8088	8163	8250	8300	8450	8563	8688	8775
4600		8163	8250	8325	8375	8525	8645	8780	8875
4800		8343	8425	8500	8568	8708	8848	8988	9070
5000		8475	8568	8656	8716	8865	9014	9163	9250

Prices in bold refer to doors with heavy system, door leaf made of PIR sandwich panel thickness 80 mm

Options:

- door leaf made of PIR sandwich panel thickness 80 mm - surcharge of 15 EUR/m²
- window, size 400 mm x 600 mm - surcharge of 105 EUR
- lock with patent insert with possibility of opening from the inside - surcharge of 720 EUR
- handle support (lever) for light-weight door - surcharge of 160 EUR (in heavy-weight door this option is included free of charge)

STANDARD SLIDING DOOR - POLYESTER - FERMOD ACCESSORIES - o DPS-LF 100 T > 0 °C (FREEZER)

Characteristic:

- **Door leaf** made of sandwich panel with PIR core 100 mm
- **Door finish** - galvanized steel sheet, coated with polyester paint in white colour RAL 9010
- **Door leaf framing** - steel channel section, made of stainless, acid-proof steel sheet, type 1.4301
- **Frame** - complex and profiled, made of steel sheet coated with polyester paint in RAL 9010
- **Accessories** - delivered by FERMOD, made of aluminium up to 400 kg
- **Lower element** - channel section made of stainless, acid-proof steel sheet, type 1.4301

DPS-LF 100 SINGLE LEAF						
S \ H	2500	3000	3500	4000	4500	5000
3000	/	/	/	/	6272	6389
3500	7280	7429	7550*	7675*	7800*	7925*
4000	7528	7676	7800*	8048*	8170*	8320*
4500	7899	8048	8210*	8370*	8543*	8665*
5000	8914	9088	9285*	9410*	9558*	9730*
5500	9261	9410	9610*	9780*	9955*	/
6000	9905	10103	10275*	10475*	/	/

*door leaf to be self-assembled on the construction site

Options:

- window, size 400 mm x 600 mm - surcharge of 105 EUR
- lock with patent insert with possibility of opening from the inside - surcharge of 310 EUR

STANDARD SLIDING DOOR - POLYESTER - FERMOD ACCESSORIES - DPS-LF 100 T> -25°C (FREEZER)

Characteristic:

- Door leaf made of sandwich panel with PIR core 100 mm
- Door finish - galvanized steel sheet, coated with polyester paint in white colour RAL 9010
- Door leaf framing - steel channel section, made of stainless, acid-proof steel sheet, type 1.4301
- Frame - complex and profiled, made of steel sheet coated with polyester paint in RAL 9010
- Accessories - delivered by FERMOD, made of aluminium
- Lower element - channel section made of stainless, acid-proof steel sheet, type 1.4301

DPS-LF 100 SINGLE LEAF								
S \ H	1800	1900	2000	2100	2200	2300	2400	2500
800	1567	1582	1598	1613	1627	1640	1654	1667
900	1590	1606	1622	1638	1653	1668	1683	1698
1000	1613	1630	1646	1663	1679	1696	1712	1729
1100	1715	1747	1757	1766	1783	1800	1817	1834
1200	1770	1789	1807	1825	1844	1862	1880	1899
1300	1853	1865	1877	1889	1915	1941	1966	1992
1400	1899	1920	1941	1961	1982	2003	2023	2044
1500	1943	1965	1987	2009	2031	2052	2074	2096
1600	1987	2010	2033	2056	2079	2102	2125	2148
1700	2110	2133	2156	2179	2202	2226	2249	2272
1800	2132	2157	2181	2205	2230	2253	2278	2302
1900	2187	2212	2237	2263	2288	2313	2338	2363
2000	2241	2267	2293	2320	2346	2372	2399	2425

S \ H	2500	2600	2700	2800	3000	3200	3400	3600	3800	4000
1500	2096	2107	2118	2128	2156	2302	2346	2390	2435	2479
1600	2148	2179	2211	2242	2272	2426	2472	2519	2565	2611
1700	2272	2295	2326	2357	2388	2549	2598	2647	2696	2744
1800	2302	2330	2361	2392	2423	2588	2639	2690	2741	2791
1900	2363	2357	2391	2425	2458	2627	2680	2733	2786	2839
2000	2425	2451	2486	2521	2556	2699	2720	2741	2832	2859
2200	2485	2520	2556	2591	2626	2782	2814	2846	2877	3534
2400	2606	2644	2682	2720	2758	2888	2984	3079	3653	3721
2600	2875	2917	2960	3003	3046	3114	3181	3778	3844	3910
2800	2958	3008	3059	3110	3160	3211	3793	3874	3956	4037
3000	3126	3158	3190	3254	3317	3870	3944	4017	4091	4165

Prices in bold refer to doors with heavy system

Options:

- door leaf made of PIR sandwich panel thickness 120 mm - surcharge of 15 EUR/m²
- door leaf made of PIR sandwich panel thickness 160 mm - surcharge of 40 EUR/m²
- window, size 400 mm x 600 mm - surcharge of 105 EUR
- lock with patent insert with possibility of opening from the inside - surcharge of 160 EUR
- handle support (lever) for light-weight door - surcharge of 160 EUR (in heavy-weight door this option is included free of charge)

STANDARD SLIDING DOOR - POLYESTER - FERMOD ACCESSORIES - DPS-LF 100 T> -25°C (FREEZER)

Characteristic:

- Door leaf made of sandwich panel with PIR core 100 mm
- Door finish - galvanized steel sheet, coated with polyester paint in white colour RAL 9010
- Door leaf framing - steel channel section, made of stainless, acid-proof steel sheet, type 1.4301
- Frame - complex and profiled, made of steel sheet coated with polyester paint in RAL 9010
- Accessories - delivered by FERMOD, made of aluminium
- Lower element - channel section made of stainless, acid-proof steel sheet, type 1.4301

DPS-LF 100 DOUBLE LEAF									
S \ H	1800	1900	2000	2100	2200	2300	2400	2500	
1000	3193	3200	3213	3225	3238				
1100	3213	3218	3225	3238	3255				
1200	3325	3338	3345	3355	3363	3375			
1300	3350	3358	3368	3375	3388	3400			
1400	3453	3464	3473	3488	3500	3513	3525	3538	
1500	3475	3485	3500	3513	3525	3538	3538	3550	
1600	3563	3575	3588	3600	3613	3625	3638	3650	
1700	3580	3593	3608	3623	3635	3645	3663	3680	
1800	3603	3615	3625	3638	3650	3663	3675	3700	
1900	3700	3713	3725	3738	3750	3763	3775	3788	
2000	3725	3738	3750	3763	3775	3788	3800	3813	

S \ H	2200	2500	2800	3000	3500	4000
2200	3925	3975	4025	4075		
2500	6475	6528	6575	6625	6750	6875
2700	6575	6600	6650	6700	6825	6963
3000	6813	6865	6914	6950	7033	7125
3200	6888	6950	7000	7038	7125	7213
3400	6938	6993	7050	7085	7180	7275
3600	7190	7250	7313	7350	7450	7545
3800	7238	7300	7363	7400	7508	7605
4000	7288	7350	7413	7458	7580	7750

Prices in bold refer to doors with heavy system

Options:

- door leaf made of PIR sandwich panel thickness 120 mm - surcharge of 15 EUR/m²
- window, size 400 mm x 600 mm - surcharge of 105 EUR
- lock with patent insert with possibility of opening from the inside - surcharge of 720 EUR
- handle support (lever) for light-weight door - surcharge of 160 EUR (in heavy-weight door this option is included free of charge)

PREMIUM SLIDING DOOR - POLYESTER - FERMOD ACCESSORIES - DPK-LF 60 T>0 °C (COLDROOM)

Characteristic:

- Door leaf thickness 60 mm, produced on the press, by high pressure injection of PUR foam into door framework
- Door finish - galvanized steel sheet coated with polyester paint in white colour RAL 9010
- Door leaf core - polyurethane foam, density of minimum 40 kg/m³
- Frame - complex and profiled, made of steel sheet coated with polyester paint in RAL 9010
- Accessories - delivered by FERMOD, made of aluminium
- Lower element - channel section made of stainless, acid-proof steel sheet, type 1.4301

DPK-LF 60 SINGLE LEAF								
S \ H	1800	1900	2000	2100	2200	2300	2400	2500
800	1414	1423	1432	1441	1450	1460	1469	1478
900	1432	1442	1452	1461	1471	1481	1491	1501
1000	1450	1460	1471	1482	1492	1503	1513	1524
1100	1504	1516	1527	1539	1551	1563	1574	1586
1200	1559	1572	1584	1597	1610	1622	1635	1648
1300	1655	1668	1682	1696	1710	1723	1737	1751
1400	1694	1699	1704	1709	1715	1741	1767	1793
1500	1732	1748	1765	1782	1798	1815	1832	1848
1600	1770	1785	1801	1817	1833	1860	1888	1904
1700	1905	1924	1942	1960	1978	1996	2015	2033
1800	2041	2058	2075	2093	2110	2128	2145	2163
1900	2088	2106	2124	2142	2161	2179	2197	2215
2000	2135	2157	2179	2201	2223	2246	2268	2417

S \ H	2500	2600	2700	2800	3000
1500	1848	1865	1918	1972	2025
1600	1904	1959	1978	2014	2051
1700	2033	2146	2186	2254	2580
1800	2163	2242	2321	2477	2600
1900	2215	2519	2577	2607	2638
2000	2417	2583	2634	2674	2715
2200	2602	2647	2692	2742	2791
2400	2914	2988	3062	3070	3078

Prices in bold refer to doors with heavy system, door leaf 80mm thickness

Options:

- door leaf thickness 80 mm - surcharge of 30 EUR/m²
- window, size 400 mm x 600 mm - surcharge of 105 EUR
- lock with patent insert with possibility of opening from the inside - surcharge of 160 EUR
- door made in colour other than RAL 9010 - surcharge of 60 EUR/m²
- handle support (lever) for light-weight door - surcharge of 160 EUR (in heavy-weight door this option is included free of charge)

PREMIUM SLIDING DOOR - POLYESTER - FERMOD ACCESSORIES - DPK-LF 60 T>0 °C (COLDROOM)

Characteristic:

- **Door leaf thickness** 60 mm, produced on the press, by high pressure injection of PUR foam into door framework
- **Door finish** - galvanized steel sheet coated with polyester paint in white colour RAL 9010
- **Door leaf core** - polyurethane foam, density of minimum 40 kg/m³
- **Frame** - complex and profiled, made of steel sheet coated with polyester paint in RAL 9010
- **Accessories** - delivered by FERMOD, made of aluminium
- **Lower element** - channel section made of stainless, acid-proof steel sheet, type 1.4301

DPK-LF 60 DOUBLE LEAF									
S \ H	1800	1900	2000	2100	2200	2300	2400	2500	
1000	2964	2971	2984	3001	3033				
1100	2996	2984	2996	3021	3058				
1200	3083	3095	3103	3113	3120	3132			
1300	3100	3108	3120	3127	3135	3145			
1400	3170	3182	3189	3199	3219	3231	3251	3293	
1500	3225	3235	3244	3256	3269	3276	3288	3308	
1600	3326	3339	3348	3358	3368	3380	3390	3400	
1700	3429	3442	3454	3467	3479	3491	3504	3516	
1800	3442	3454	3479	3491	3511	3524	3536	3553	
1900	3529	3541	3553	3566	3578	3590	3603	3615	
2000	3566	3583	3598	3610	3623	3633	3652	3690	

S \ H	2200	2500	2800	3000	3500
2200	3714	3789	5982	6032	6106
2500	6205	6252	6312	6314	6401
2700	6371	6418	6465	6500	6574
3000	6599	6655	6710	6748	6829
3200	6631	6686	6748	6785	6871
3400	6772	6834	6884	6918	7008
3600	6995	7057	7119	7156	7268

Prices in bold refer to doors with heavy system,
door leaf 80mm thickness

Options:

- door leaf thickness 80 mm - surcharge of 30 EUR/m²
- window, size 400 mm x 600 mm - surcharge of 105 EUR
- lock with patent insert with possibility of opening from the inside - surcharge of 720 EUR
- door made in colour other than RAL 9010 - surcharge of 60 EUR/m²
- handle support (lever) for light-weight door - surcharge of 160 EUR (in heavy-weight door this option is included free of charge)

PREMIUM SLIDING DOOR - POLYESTER - FERMOD ACCESSORIES - DPK-LF 100 T>-25°C (FREEZER)

Characteristic:

- Door leaf thickness 100 mm, produced on the press, by high pressure injection of PUR foam into door framework
- Door finish - galvanized steel sheet coated with polyester paint in white colour RAL 9010
- Door leaf core - polyurethane foam, density of minimum 40 kg/m³
- Frame - complex and profiled, made of steel sheet coated with polyester paint in RAL 9010
- Accessories - delivered by FERMOD, made of aluminium
- Lower element - channel section made of stainless, acid-proof steel sheet, type 1.4301

DPK-LF 100 SINGLE LEAF								
S \ H	1800	1900	2000	2100	2200	2300	2400	2500
800	1679	1693	1707	1722	1736	1750	1764	1778
900	1724	1739	1754	1769	1784	1799	1814	1830
1000	1768	1784	1800	1817	1833	1849	1865	1881
1100	1790	1806	1823	1840	1857	1874	1891	1908
1200	1811	1829	1847	1864	1882	1900	1918	1935
1300	1949	1970	1991	2012	2033	2054	2075	2096
1400	2055	2079	2103	2127	2151	2175	2199	2222
1500	2087	2111	2134	2158	2182	2206	2230	2253
1600	2118	2142	2166	2189	2213	2237	2260	2284
1700	2149	2173	2197	2221	2244	2268	2291	2315
1800	2241	2265	2289	2313	2337	2361	2385	2409
1900	2294	2321	2347	2374	2400	2427	2453	2479
2000	2348	2368	2388	2429	2469	2510	2550	2697

S \ H	2500	2600	2700	2800	3000
1500	2222	2232	2243	2253	2304
1600	2259	2260	2262	2290	2318
1700	2315	2353	2390	2397	2986
1800	2409	2442	2476	3030	3041
1900	2479	2974	3009	3044	3079
2000	2697	3090	3128	3166	3203
2200	3167	3207	3248	3287	3328
2400	3455	3499	3544	3589	3634

Prices in bold refer to doors with heavy system

Options:

- door leaf thickness 120 mm - surcharge of 30 EUR/m²
- door leaf thickness 150 mm - surcharge of 60 EUR/m²
- window, size 400 mm x 600 mm - surcharge of 105 EUR
- lock with patent insert with possibility of opening from the inside - surcharge of 160 EUR
- door made in colour other than RAL 9010 - surcharge of 60 EUR/m²
- handle support (lever) for light-weight door - surcharge of 160 EUR (in heavy-weight door this option is included free of charge)

PREMIUM SLIDING DOOR - POLYESTER - FERMOD ACCESSORIES - DPK-LF 100 T>-25°C (FREEZER)

Characteristic:

- Door leaf thickness 100 mm, produced on the press, by high pressure injection of PUR foam into door framework
- Door finish - galvanized steel sheet coated with polyester paint in white colour RAL 9010
- Door leaf core - polyurethane foam, density of minimum 40 kg/m³
- Frame - complex and profiled, made of steel sheet coated with polyester paint in RAL 9010
- Accessories - delivered by FERMOD, made of aluminium
- Lower element - channel section made of stainless, acid-proof steel sheet, type 1.4301

DPK-LF 100 DOUBLE LEAF								
S \ H	1800	1900	2000	2100	2200	2300	2400	2500
1000	3335	3343	3355	3373	3405			
1100	3368	3355	3368	3392	3430			
1200	3454	3467	3474	3484	3491	3504		
1300	3472	3479	3491	3499	3506	3516		
1400	3541	3553	3561	3571	3590	3603	3623	3665
1500	3597	3607	3615	3628	3640	3647	3660	3680
1600	3697	3711	3719	3729	3739	3751	3761	3771
1700	3800	3813	3826	3838	3850	3863	3875	3888
1800	3813	3826	3850	3863	3883	3895	3907	3925
1900	3900	3912	3925	3937	3950	3962	3974	3987
2000	3937	3954	3969	3982	3994	4004	4024	4061

S \ H	2200	2500	2800	3000	3500
2200	4086	4160	6354	6403	6495
2500	6577	6624	6683	6686	6772
2700	6743	6790	6837	6871	6946
3000	6970	7026	7082	7119	7201
3200	7003	7057	7119	7156	7243
3400	7144	7206	7255	7290	7379
3600	7367	7429	7490	7528	7639

Prices in bold refer to doors with heavy system

Options:

- door leaf thickness 120 mm - surcharge of 30 EUR/m²
- window, size 400 mm x 600 mm - surcharge of 105 EUR
- lock with patent insert with possibility of opening from the inside - surcharge of 720 EUR
- door made in colour other than RAL 9010 - surcharge of 60 EUR/m²
- handle support (lever) for light-weight door - surcharge of 160 EUR (in heavy-weight door this option is included free of charge)

PREMIUM SLIDING DOOR - STAINLESS - FERMOD ACCESSORIES - DPK-NF 60 T>0 °C (COLDROOM)

Characteristic:

- **Door leaf thickness** 60 mm, produced on the press, by high pressure injection of PUR foam into door framework
- **Door finish** - stainless, acid-proof steel, type 1.4301, mat surface 2B or grinded surface 4N (option)
- **Door leaf core** - polyurethane foam, density of minimum 40 kg/m³
- **Frame** - complex and profiled, made of stainless, acid-proof steel, type 1.4301, mat surface 2B or grinded surface 4N (option)
- **Accessories** - delivered by FERMOD, made of aluminium
- **Lower element** - channel section made of stainless, acid-proof steel sheet, type 1.4301

DPK-NF 60 SINGLE LEAF								
S \ H	1800	1900	2000	2100	2200	2300	2400	2500
800	1607	1625	1644	1662	1681	1699	1717	1736
900	1639	1658	1678	1698	1718	1737	1757	1777
1000	1670	1702	1735	1751	1768	1785	1801	1818
1100	1733	1756	1779	1801	1823	1846	1869	1891
1200	1797	1821	1845	1869	1893	1916	1940	1964
1300	1850	1876	1901	1926	1952	1977	2002	2027
1400	1904	1931	1957	1984	2011	2037	2064	2091
1500	1965	1993	2021	2049	2077	2105	2133	2161
1600	2026	2050	2074	2098	2122	2162	2203	2232
1700	2158	2189	2220	2251	2281	2312	2343	2374
1800	2290	2322	2354	2387	2419	2451	2483	2515
1900	2349	2382	2416	2449	2483	2516	2550	2584
2000	2407	2448	2489	2529	2570	2611	2652	2794

S \ H	2500	2600	2700	2800	3000
1500	2161	2177	2255	2333	2411
1600	2232	2285	2338	2392	2445
1700	2374	2443	2512	2546	2917
1800	2515	2548	2580	2943	2969
1900	2584	2997	3049	3086	3126
2000	2794	3109	3174	3229	3283
2200	3142	3172	3300	3333	3493
2400	3540	3661	3781	3796	3811

Prices in bold refer to doors with heavy system, door leaf 80mm thickness

Options:

- door leaf thickness 80 mm - surcharge of 30 EUR/m²
- window, size 400 mm x 600 mm - surcharge of 105 EUR
- lock with patent insert with possibility of opening from the inside - surcharge of 200 EUR
- handle support (lever) for light-weight door - surcharge of 160 EUR (in heavy-weight door this option is included free of charge)

PREMIUM SLIDING DOOR - STAINLESS - FERMOD ACCESSORIES - DPK-NF 60 T>0 °C (COLDROOM)

Characteristic:

- **Door leaf thickness** 60 mm, produced on the press, by high pressure injection of PUR foam into door framework
- **Door finish** - stainless, acid-proof steel, type 1.4301, mat surface 2B or grinded surface 4N (option)
- **Door leaf core** - polyurethane foam, density of minimum 40 kg/m³
- **Frame** - complex and profiled, made of stainless, acid-proof steel, type 1.4301, mat surface 2B or grinded surface 4N (option)
- **Accessories** - delivered by FERMOD, made of aluminium
- **Lower element** - channel section made of stainless, acid-proof steel sheet, type 1.4301

DPK-NF 60 DOUBLE LEAF								
S \ H	1800	1900	2000	2100	2200	2300	2400	2500
1000	3189	3207	3222	3244	3256			
1100	3219	3231	3244	3269	3281			
1200	3330	3343	3368	3380	3397	3417		
1300	3348	3368	3392	3405	3422	3454		
1400	3437	3467	3479	3496	3516	3536	3553	3590
1500	3467	3479	3499	3521	3541	3566	3590	3635
1600	3586	3608	3630	3650	3672	3694	3714	3739
1700	3610	3630	3652	3677	3702	3722	3751	3764
1800	3652	3685	3707	3732	3774	3796	3846	3868
1900	3801	3826	3850	3875	3900	3925	3950	3974
2000	3823	3850	3875	3900	3925	3957	3982	4036

S \ H	2200	2500	2800	3000	3500
2200	4011	4088	6413	6463	6537
2500	6599	6686	6782	6842	6983
2700	6649	6748	6847	6909	7070
3000	6772	6876	6983	7057	7230
3200	6822	6933	7045	7119	7305
3400	7070	7181	7305	7379	7565
3600	7292	7416	7540	7614	7812

Prices in bold refer to doors with heavy system, door leaf 80mm thickness

Options:

- door leaf thickness 80 mm - surcharge of 30 EUR/m²
- window, size 400 mm x 600 mm - surcharge of 105 EUR
- lock with patent insert with possibility of opening from the inside - surcharge of 720 EUR
- handle support (lever) for light-weight door - surcharge of 160 EUR (in heavy-weight door this option is included free of charge)

PREMIUM SLIDING DOOR - STAINLESS - FERMOD ACCESSORIES - DPK-NF 100 T>-25 °C (FREEZER)

Characteristic:

- Door leaf thickness 100 mm, produced on the press, by high pressure injection of PUR foam into door framework
- Door finish - stainless, acid-proof steel, type 1.4301, mat surface 2B or grinded surface 4N (option)
- Door leaf core - polyurethane foam, density of minimum 40 kg/m³
- Heated frame - complex and profiled, made of stainless, acid-proof steel, type 1.4301, mat surface 2B or grinded surface 4N (option)
- Accessories - delivered by FERMOD, made of aluminium
- Lower element - channel section made of stainless, acid-proof steel sheet, type 1.4301

DPK-NF 100 SINGLE LEAF								
S \ H	1800	1900	2000	2100	2200	2300	2400	2500
800	1971	1997	2022	2048	2073	2098	2124	2149
900	2032	2059	2086	2113	2140	2168	2195	2222
1000	2093	2122	2150	2179	2208	2237	2266	2294
1100	2135	2165	2196	2226	2257	2287	2317	2348
1200	2177	2209	2241	2273	2305	2337	2369	2401
1300	2281	2316	2351	2386	2421	2456	2491	2526
1400	2384	2422	2460	2499	2537	2574	2613	2651
1500	2414	2451	2488	2525	2562	2599	2635	2672
1600	2444	2483	2522	2561	2599	2638	2677	2715
1700	2562	2602	2643	2683	2723	2764	2804	2844
1800	2680	2722	2764	2805	2847	2889	2931	2973
1900	2750	2793	2837	2881	2925	2968	3011	3055
2000	2820	2873	2926	2979	3032	3084	3137	3286

S \ H	2500	2600	2700	2800	3000
1500	2672	2699	2780	2860	2941
1600	2715	2803	2872	2890	2909
1700	2844	2907	2965	3011	3679
1800	2973	3011	3057	3644	3693
1900	3055	3551	3608	3665	3722
2000	3286	3709	3769	3831	3892
2200	3801	3866	3931	3997	4061
2400	4163	4236	4308	4381	4454

Prices in bold refer to doors with heavy system

Options:

- door leaf thickness 120 mm - surcharge of 30 EUR/m²
- door leaf thickness 150 mm - surcharge of 60 EUR/m²
- window, size 400 mm x 600 mm - surcharge of 105 EUR
- lock with patent insert with possibility of opening from the inside - surcharge of 200 EUR
- handle support (lever) for light-weight door - surcharge of 160 EUR (in heavy-weight door this option is included free of charge)

PREMIUM SLIDING DOOR - STAINLESS - FERMOD ACCESSORIES - DPK-NF 100 T>-25 °C (FREEZER)

Characteristic:

- Door leaf thickness 100 mm, produced on the press, by high pressure injection of PUR foam into door framework
- Door finish - stainless, acid-proof steel, type 1.4301, mat surface 2B or grinded surface 4N (option)
- Door leaf core - polyurethane foam, density of minimum 40 kg/m³
- Heated frame - complex and profiled, made of stainless, acid-proof steel, type 1.4301, mat surface 2B or grinded surface 4N (option)
- Accessories - delivered by FERMOD, made of aluminium
- Lower element - channel section made of stainless, acid-proof steel sheet, type 1.4301

DPK-NF 100 DOUBLE LEAF								
S \ H	1800	1900	2000	2100	2200	2300	2400	2500
1000	3766	3785	3800	3824	3837			
1100	3798	3811	3824	3850	3863			
1200	3915	3929	3955	3968	3986	4007		
1300	3934	3955	3981	3994	4012	4046		
1400	4028	4060	4073	4091	4112	4133	4151	4190
1500	4060	4073	4094	4117	4138	4164	4190	4238
1600	4185	4209	4232	4253	4277	4300	4321	4348
1700	4211	4232	4256	4282	4308	4329	4361	4374
1800	4256	4290	4314	4340	4384	4408	4460	4484
1900	4413	4439	4465	4492	4518	4544	4570	4596
2000	4437	4465	4492	4518	4544	4578	4604	4662

S \ H	2200	2500	2800	3000	3500
2200	4636	4717	7176	7229	7307
2500	7373	7464	7566	7629	7779
2700	7425	7530	7635	7700	7870
3000	7556	7666	7779	7857	8040
3200	7608	7726	7844	7923	8119
3400	7870	7988	8119	8198	8394
3600	8106	8237	8368	8446	8656

Prices in bold refer to doors with heavy system

Options:

- door leaf thickness 120 mm - surcharge of 30 EUR/m²
- window, size 400 mm x 600 mm - surcharge of 105 EUR
- lock with patent insert with possibility of opening from the inside - surcharge of 720 EUR
- handle support (lever) for light-weight door - surcharge of 160 EUR (in heavy-weight door this option is included free of charge)



GAS-TIGHT SLIDING DOORS, “DPG” TYPE

APPLICATION

DPG doors are applied in rooms with controlled atmosphere (KA), which is the best technology to store fruits and vegetables. In standard coldrooms fruits are stored in normal atmosphere containing 21% of oxygen and 0% carbon dioxide. In controlled atmosphere the content of oxygen is below 3% and the content of carbon dioxide is below 5%. This leads to prolongation of fruits and vegetables store period without losing their quality.

DPG - lightweight, up to 120 kg

DPG - heavyweight, up to 400 kg

DOOR LEAF

DP doors are available in 2 versions: In DPSG (STANDARD) version door leaf is made of sandwich panel with PIR core and framed by steel channel section. In DPKG (PREMIUM) version door leaf is produced on the press, by high pressure injection of PUR foam into door framework. The density of PUR core is not less than 40 kg/m³.

Available thicknesses:

- 80 mm

STANDARD door leaf finish (sandwich panel):

- Galvanized steel sheet (L) thickness 0,5 mm, coated with polyester paint in white colour RAL 9010

PREMIUM door leaf finish:

- Stainless, acid-proof steel (N), type 1.4301, thickness 0,8 mm, mat surface 2B
- Galvanized steel sheet (L) thickness 0,75 mm, coated with polyester paint in white colour RAL 9010

Door leaf is equipped with gasket delivered by FERMOD (F), eccentric ball valves one for gas filling of the room, the other in order to take samples from the room atmosphere clamps to ensure door leaf tightness, revision window 528 x 828 mm, closed with a key.

FRAME TYPE

In both DPSG and DPKG version door frame is filled with PUR foam. It is made of stainless, acid-proof steel (N), type 1.4301, thickness 0,8 mm, mat surface 2B or galvanized steel sheet (T) thickness 0,75 mm, coated with polyester paint in white colour (RAL 9010).

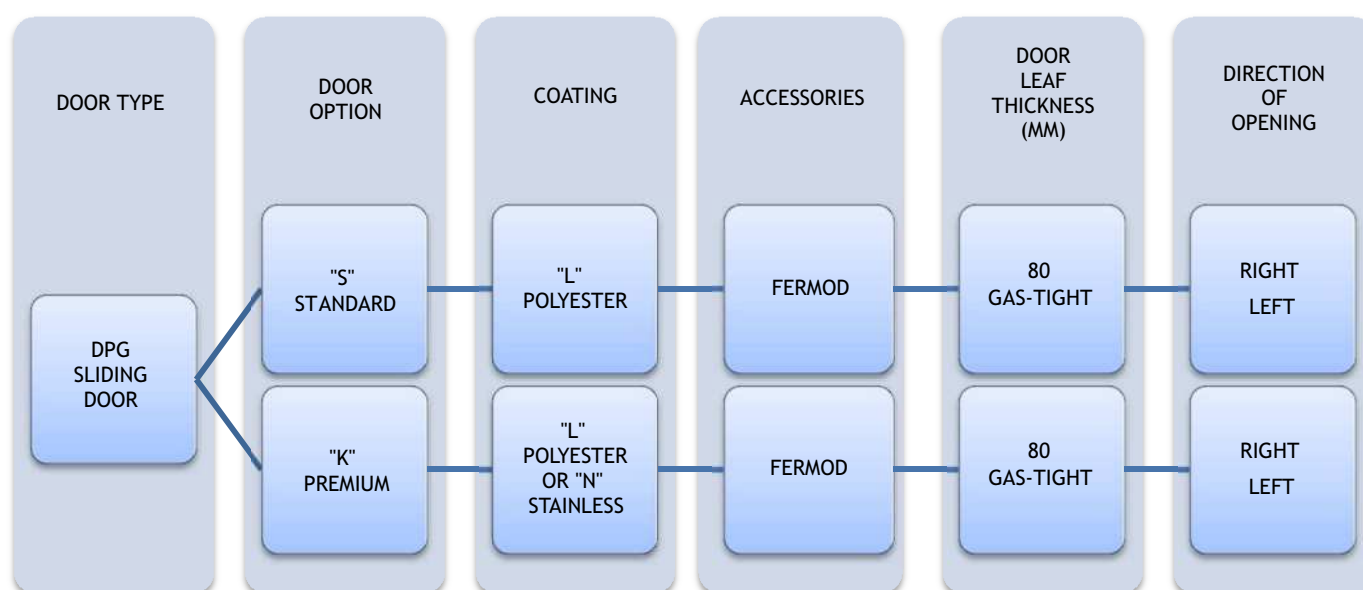
Lock is delivered by RAHRBACH. It is equipped with patent insert with possibility of emergency opening from the inside even if the door is locked.

ACCESSORIES

- FERMOD accessories (F), aluminium rail - lightweight type
- FERMOD accessories (F), galvanized steel or stainless steel rail - heavyweight type
- FERMOD accessories (F), stainless steel rail - lightweight type (option)
- FERMOD accessories (F), stainless steel rail - heavyweight type (option)

OPTIONS

- Untypical door leaf finish:
 - Stainless, acid-proof steel (N), type 1.4301, thickness 0,8 mm, grinded surface 4B or grained surface
 - Galvanized steel sheet (L) coated with polyester paint other than white (RAL 9010)
- Availability to produce door with and without a threshold (lower element is installed in the floor)
- Flashing of the door opening



Enquiry/order example:



DPKG-NF 80 - Premium gas-tight coldroom sliding door, stainless steel finish, FERMOD accessories, door leaf thickness 80 mm, direction of opening to the right.

STANDARD SLIDING DOOR - POLYESTER - FERMOD ACCESSORIES - DPSG-LF 80 T>0 °C (GAS-TIGHT)

Characteristic:

- Door leaf made of sandwich panel with PIR core 80 mm
- Door finish - galvanized steel sheet coated with polyester paint in white colour RAL 9010
- Door leaf framing - steel channel section, made of stainless, acid-proof steel sheet, type 1.4301
- Frame - complex and profiled, made of steel sheet coated with polyester paint in RAL 9010
- Accessories - delivered by FERMOD, made of aluminium
- Lower element - channel section made of stainless, acid-proof steel sheet, type 1.4301
- Eccentric ball valves - one for gas filling of the room, the other in order to take samples from the room atmosphere
- clamps - ensure door leaf tightness
- revision window - dimension of 528 x 828 mm

DPSG-LF 80 SINGLE LEAF								
S \ H	1800	1900	2000	2100	2200	2300	2400	2500
800	2301	2310	2320	2329	2338	2347	2356	2366
900	2319	2329	2339	2349	2359	2369	2380	2390
1000	2337	2348	2359	2370	2380	2391	2402	2414
1100	2468	2480	2492	2504	2515	2527	2539	2551
1200	2532	2545	2558	2571	2584	2597	2610	2623
1300	2569	2583	2597	2611	2624	2638	2652	2666
1400	2607	2621	2636	2650	2665	2680	2694	2709
1500	2645	2661	2676	2692	2707	2723	2738	2754
1600	2683	2700	2716	2733	2749	2766	2782	2798
1700	2793	2810	2826	2844	2860	2877	2894	2911
1800	2811	2828	2846	2864	2881	2899	2917	2935
1900	2856	2875	2893	2912	2926	2940	2955	2969
2000	2901	2921	2940	2960	2979	2999	3018	3037

S \ H	2500	2600	2700	2800	3000	3200	3400	3600	3800	4000
1500	2696	2731	2751	2771	2792	2932	2965	2997	3030	3062
1600	2739	2829	2851	2872	2894	3039	3073	3107	3141	3175
1700	2911	2928	2951	2973	2996	3147	3182	3217	3252	3287
1800	2935	2952	2976	3000	3023	3178	3214	3252	3289	3325
1900	2969	2977	3002	3027	3051	3209	3247	3286	3324	3363
2000	3037	3057	3083	3110	3136	3299	3339	3380	3420	3460
2200	3087	3113	3139	3166	3193	3360	3404	3448	3492	3924
2400	3191	3227	3263	3299	3335	3502	3539	3576	4036	4086
2600	3370	3402	3434	3466	3498	3584	3670	4151	4200	4249
2800	3548	3586	3624	3663	3701	3739	4164	4228	4292	4355
3000	3636	3672	3709	3745	3782	4237	4293	4349	4405	4461

Prices in bold refer to doors with heavy system

Options:

- lock with patent insert with possibility of opening from the inside - surcharge of 200 EUR
- handle support (lever) for light-weight door - surcharge of 190 EUR (in heavy-weight door this option is included free of charge)

PREMIUM SLIDING DOOR - POLYESTER - FERMOD ACCESSORIES - DPKG-LF 80 T>0 °C (GAS-TIGHT)

Characteristic:

- Door leaf thickness 80 mm, produced on the press, by high pressure injection of PUR foam into door framework
- Door finish - galvanized steel sheet coated with polyester paint in white colour RAL 9010
- Door leaf core - polyurethane foam, density of minimum 40 kg/m³
- Frame - complex and profiled, made of steel sheet coated with polyester paint in RAL 9010
- Accessories - delivered by FERMOD, made of aluminium
- Lower element - channel section made of stainless, acid-proof steel sheet, type 1.4301
- Eccentric ball valves - one for gas filling of the room, the other in order to take samples from the room atmosphere
- clamps - ensure door leaf tightness
- revision window - dimension of 528 x 828 mm

DPKG-LF 80 SINGLE LEAF								
S \ H	1800	1900	2000	2100	2200	2300	2400	2500
800	2413	2422	2431	2440	2449	2458	2467	2476
900	2430	2440	2450	2460	2470	2480	2490	2500
1000	2448	2459	2470	2480	2491	2502	2512	2523
1100	2503	2515	2526	2538	2550	2562	2573	2585
1200	2606	2619	2632	2645	2658	2671	2684	2697
1300	2644	2657	2671	2685	2698	2712	2725	2739
1400	2682	2695	2709	2721	2735	2750	2765	2781
1500	2720	2736	2753	2770	2786	2802	2819	2835
1600	2757	2740	2789	2804	2820	2847	2874	2890
1700	2891	2909	2927	2945	2963	2981	2999	3018
1800	3025	3042	3059	3077	3094	3111	3128	3146
1900	3071	3089	3107	3125	3143	3161	3179	3197
2000	3118	3140	3162	3184	3206	3228	3249	3396

S \ H	2500	2600	2700	2800	3000
1500	2835	2852	2904	2957	3009
1600	2890	2938	2970	3003	3035
1700	3018	3130	3169	3235	3609
1800	3146	3224	3301	3653	3646
1900	3197	3581	3641	3637	3668
2000	3396	3612	3664	3705	3747
2200	3631	3677	3723	3774	3825
2400	3801	3874	3946	3954	3961

Prices in bold refer to doors with heavy system

Options:

- lock with patent insert with possibility of opening from the inside - surcharge of 200 EUR
- door made in colour other than RAL 9010 - surcharge of 60 EUR/m²
- handle support (lever) for light-weight door - surcharge of 190 EUR (in heavy-weight door this option is included free of charge)

PREMIUM SLIDING DOOR - STAINLESS - FERMOD ACCESSORIES - DPKG-NF 80 T>0 °C (GAS-TIGHT)

Characteristic:

- Door leaf thickness 80 mm, produced on the press, by high pressure injection of PUR foam into door framework
- Door finish -stainless, acid-proof steel, type 1.4301, mat surface 2B or grinded surface 4N (option)
- Door leaf core - polyurethane foam, density of minimum 40 kg/m³
- Heated frame - complex and profiled, made of stainless, acid-proof steel, type 1.4301, mat surface 2B or grinded surface 4N (option)
- Accessories - delivered by FERMOD, made of aluminium
- Lower element - channel section made of stainless, acid-proof steel sheet, type 1.4301
- Eccentric ball valves - one for gas filling of the room, the other in order to take samples from the room atmosphere
- clamps - ensure door leaf tightness
- revision window - dimension of 528 x 828 mm

DPKG-NF 80 SINGLE LEAF								
S \ H	1800	1900	2000	2100	2200	2300	2400	2500
800	2862	2882	2902	2923	2943	2963	2983	3004
900	2896	2918	2940	2962	2984	3006	3028	3050
1000	2931	2967	3003	3022	3040	3058	3076	3095
1100	3001	3026	3051	3076	3101	3126	3151	3176
1200	3071	3098	3124	3151	3177	3204	3230	3257
1300	3131	3159	3187	3215	3243	3271	3299	3327
1400	3190	3220	3249	3279	3308	3338	3367	3397
1500	3258	3289	3320	3351	3382	3413	3444	3475
1600	3326	3352	3379	3404	3431	3476	3521	3554
1700	3472	3506	3540	3574	3608	3642	3676	3710
1800	3617	3653	3689	3724	3760	3796	3831	3867
1900	3682	3719	3757	3794	3831	3868	3905	3942
2000	3747	3792	3837	3883	3928	3973	4018	4175

S \ H	2500	2600	2700	2800	3000
1500	3475	3528	3604	3680	3756
1600	3554	3612	3671	3730	3788
1700	3710	3787	3863	3901	4355
1800	3867	3903	3938	4384	4414
1900	3942	4446	4504	4546	4610
2000	4175	4572	4645	4707	4769
2200	4609	4643	4787	4825	5005
2400	4859	4988	5117	4897	5150

Prices in bold refer to doors with heavy system

Options:

- lock with patent insert with possibility of opening from the inside - surcharge of 200 EUR
- handle support (lever) for light-weight door - surcharge of 190 EUR (in heavy-weight door this option is included free of charge)

UNIVERSAL HINGED DOORS, “DRU” TYPE



APPLICATION

DRU are multifunctional hinged doors which can be applied in different conditions and locations, such as industrial objects, production facilities store houses, etc. The structure of the door ensures its strength and durability. High insulation value has been achieved thanks to polyurethane foam core (PUR).

DOOR LEAF

Door leaf is produced on the press, by high pressure injection of PUR foam into door framework. The density of PUR core is not less than 40 kg/m³.

Available thickness

- 50mm - single or double-leaf

Door leaf finish

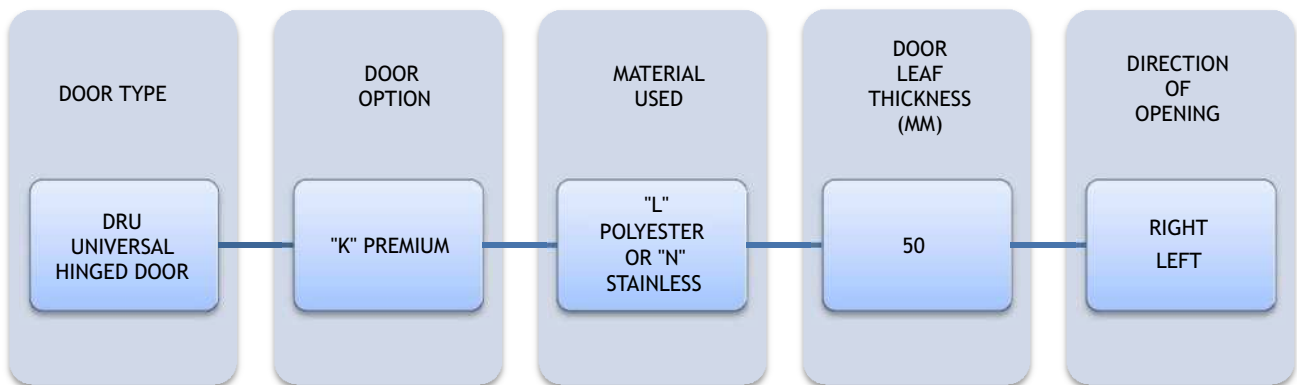
- stainless, stainless, acid-proof steel (N), type 1.4301, thickness 0,8 mm, mat surface 2B
- galvanized steel sheet 0,75 mm coated with polyester paint in white colour RAL 9010

ACCESSORIES

- lock with patent insert
- handle or knob made of stainless, acid-proof steel, type 1.4301
- hinges made of stainless, acid-proof steel, type 1.4301
- bolt in double-leaf door

OPTIONS

- Untypical door leaf finish:
 - Stainless, acid-proof steel (N), type 1.4301, thickness 0,8 mm, grinded surface 4B or grained surface
 - Galvanized steel sheet (T) thickness 0,75 mm, coated with polyester paint other than white
 - Polyester laminate PECOLIT in RAL 9016 with stainless, acid-proof door leaf framing (N), type 1.4301
- Availability to produce door with and without a threshold (lower element is installed in the floor)
- Door pump
- Electric hook
- Door windows:
 - Round window ø280 mm
 - Window in a different shape (special enquiry)
 - Execution of opening for a individual glazing
- Ventilation bar:
 - Dimension 455 x 135 mm
 - Other dimension and shape - individual enquiry
- Flashing of the door opening



Enquiry/order example:



DRU-L - Universal hinged door, polyester paint finish, door leaf thickness 50 mm, direction of opening to the right.

UNIVERSAL HINGED DOORS, STAINLESS DRU-N T>0 °C

Characteristic:

- **Door leaf** thickness 50 mm, produced on the press, by high pressure injection of PUR foam into door framework
- **Door finish** - stainless, acid-proof steel, type 1.4301, mat surface 2B or grinded surface 4N (option)
- **Door leaf core** - polyurethane foam, density of minimum 40 kg/m³
- **Door closing** - lock with patent insert + stainless, acid-proof handle
- **Hinges** - stainless, acid-proof, type 1.4301
- **Frame** - complex and profiled, made of stainless, acid-proof steel, type 1.4301, mat surface 2B or grinded surface 4N (option)

DRU-N 50 SINGLE LEAF			
S \ H	2000	2100	2200
800	783	803	823
900	835	855	875
1000	868	887	906
1100	896	948	1001
1200	974	991	1058
1300	1006	1027	1074
1400	1037	1062	1090
1500	1069	1098	1099

DRU-N 50 DOUBLE LEAF							
S \ H	2000	2100	2200	2300	2400	2500	2600
1200	1264	1307	1351	1379	1406	1433	1461
1300	1297	1341	1386	1415	1444	1473	1502
1400	1329	1375	1422	1452	1483	1513	1543
1500	1362	1410	1457	1489	1521	1553	1584
1600	1394	1444	1493	1526	1559	1592	1625
1700	1427	1478	1528	1563	1597	1632	1666
1800	1460	1512	1564	1600	1635	1671	1707
1900	1548	1593	1637	1674	1711	1748	1786
2000	1637	1673	1709	1748	1786	1825	1864
2100	1670	1712	1753	1794	1834	1873	1927
2200	1703	1751	1798	1839	1881	1922	1990
2300	1736	1789	1842	1885	1928	1971	2031
2400	1770	1828	1887	1931	1975	2019	2072
2500	1803	1867	1931	1977	2022	2068	2113

Grained door surface - surcharge of 16%

Options:

- window, size 400 mm x 600 mm - surcharge of 105 EUR
- ventilation bar - surcharge of 60 EUR

UNIVERSAL HINGEND DOORS, POLYESTER DRU-L T>0 °C

Characteristic:

- **Door leaf** thickness 50 mm, produced on the press, by high pressure injection of PUR foam into door framework
- **Door finish** - galvanized steel sheet coated with polyester paint in white colour RAL 9010
- **Door leaf core** - polyurethane foam, density of minimum 40 kg/m³
- **Door closing** - lock with patent insert + stainless, acid-proof handle
- **Hinges** - stainless, acid-proof, type 1.4301
- **Frame** - complex and profiled, made of stainless, acid-proof steel, type 1.4301, mat surface 2B or grinded surface 4N (option)

DRU-L 50 SINGLE LEAF			
S \ H	2000	2100	2200
800	609	619	629
900	610	620	629
1000	627	653	680
1100	657	699	740
1200	734	745	786
1300	752	764	803
1400	760	773	809
1500	778	792	817

DRU-L 50 DOUBLE LEAF								
S \ H	2000	2100	2200	2300	2400	2500	2600	
1200	1030	1045	1059	1074	1089	1120	1152	
1300	1048	1063	1078	1094	1109	1141	1174	
1400	1065	1081	1097	1113	1129	1163	1196	
1500	1082	1099	1116	1133	1149	1183	1218	
1600	1100	1117	1135	1152	1170	1205	1239	
1700	1117	1136	1154	1172	1190	1225	1261	
1800	1135	1154	1173	1191	1210	1247	1283	
1900	1192	1220	1249	1258	1268	1306	1344	
2000	1208	1245	1283	1284	1284	1324	1364	
2100	1268	1288	1348	1353	1359	1397	1450	
2200	1295	1323	1378	1388	1398	1433	1497	
2300	1322	1357	1407	1422	1437	1468	1519	
2400	1349	1392	1436	1456	1476	1504	1541	
2500	1375	1420	1465	1490	1515	1539	1564	

Options:

- door made in colour other than RAL 9010 - surcharge of 60 EUR/m²
- window, size 400 mm x 600 mm - surcharge of 105 EUR
- ventilation bar - surcharge of 60 EUR

SWING DOORS, “DW” TYPE



APPLICATION

DW doors are great solution for industrial gateways with high number of passages (production facilities, supermarkets, restaurants, shops, etc.). The structure of the door ensures its strength and durability. High insulation value has been achieved thanks to polyurethane foam core (PUR).

DOOR LEAF

Door leaf is produced on the press, by high pressure injection of PUR foam into door framework. The density of PUR core is not less than 40 kg/m^3 .

DOOR LEAF FINISH

- Stainless, stainless, acid-proof steel (N), type 1.4301, thickness 0,8 mm, mat surface 2B
- Galvanized steel sheet 0,75 mm coated with polyester paint in white colour RAL 9010

Swing doors are equipped with round stainless, acid-proof window, diameter of $\varnothing 280 \text{ mm}$ (standard).

Swing doors can be produced in single or double-leaf option.

FRAME

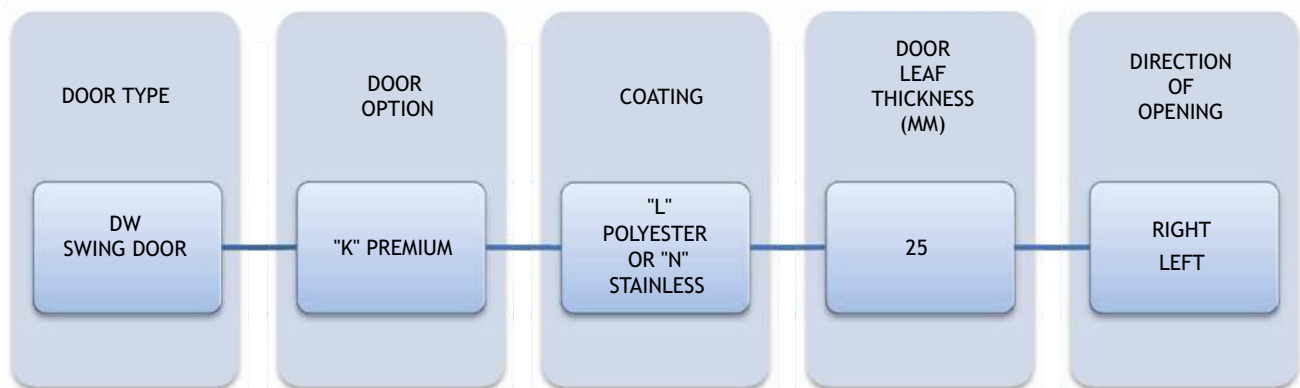
Swing doors DW installed to sandwich panel are equipped in frame in the shape of channel section, in case the DW doors are installed to brick wall are equipped in installation profile. Both channel section and installation profile are made of made of stainless, acid-proof steel, type 1.4301 or galvanized steel sheet coated with polyester paint in white colour RAL 9010.

HINGES

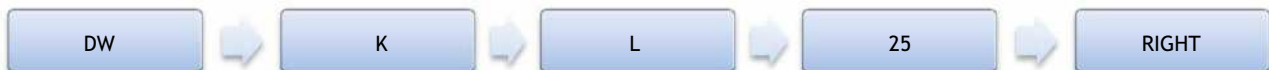
Hinges are delivered by FERMOD and are made of stainless, acid-proof steel or PVC with “STOP” function.

OPTION

- Untypical door leaf finish:
 - Stainless, acid-proof steel (N), type 1.4301, thickness 0,8 mm, grinded surface 4B or grained surface
 - Galvanized steel sheet (T) thickness 0,75 mm, coated with polyester paint other than white
 - Polyester laminate PECOLIT in RAL 9016 with stainless, acid-proof door leaf framing (N), type 1.4301
- Door windows:
 - Window in a different shape (special enquiry)
 - Execution of opening for a individual glazing
- Flashing of the door opening
- Execution in composite material PE 500



Enquiry/order example:



DW-L - swing door, polyester paint finish, door leaf thickness 25 mm, direction of opening to the right.

SWING DOORS, POLYESTER DW-L T>0 °C

Characteristic:

- **Door leaf** thickness 25 mm, produced on the press, by high pressure injection of PUR foam into door framework
- **Door finish** - galvanized steel sheet coated with polyester paint in white colour RAL 9010
- **Door leaf core** - polyurethane foam, density of minimum 40 kg/m³
- **Hinges** - stainless, acid-proof, type 1.4301
- **Window** - round shape, stainless, acid-proof, type 1.4301
- **Buffers** preventing against damages

DW-L SINGLE LEAF						
S \ H	2000	2100	2200	2300	2400	2500
700	857	864	871	878	885	892
800	872	880	887	895	902	910
900	886	895	903	912	920	929
1000	901	910	919	/	/	/
1100	916	925	935	/	/	/
1200	930	941	952	/	/	/
1300	945	956	968	/	/	/

DW-L DOUBLE LEAF						
S \ H	2000	2100	2200	2300	2400	2500
1200	1409	1421	1433	1445	1457	1470
1300	1433	1446	1459	1472	1485	1498
1400	1457	1471	1485	1498	1512	1526
1500	1482	1496	1510	1525	1539	1553
1600	1506	1521	1536	1551	1566	1581
1700	1530	1546	1561	1577	1593	1609
1800	1554	1570	1587	1604	1621	1637
1900	1578	1595	1613	1630	1647	1665
2000	1602	1620	1638	/	/	/
2100	1626	1645	1664	/	/	/
2200	1650	1670	1689	/	/	/
2300	1674	1695	1715	/	/	/
2400	1698	1720	1741	/	/	/
2500	1722	1744	1766	/	/	/
2600	1746	1769	1792	/	/	/

Options:

- door made in colour other than RAL 9010 - surcharge of 60 EUR/m²

SWING DOORS, STAINLESS DW-N T>0 °C

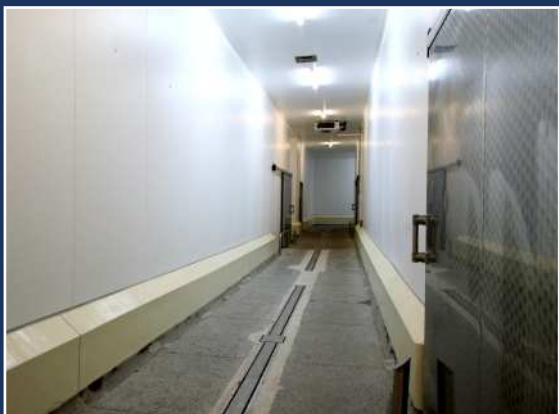
Characteristic:

- **Door leaf** thickness 25 mm, produced on the press, by high pressure injection of PUR foam into door framework
- **Door finish** - stainless, acid-proof steel, type 1.4301, mat surface 2B or grinded surface 4N (option)
- **Door leaf core** - polyurethane foam, density of minimum 40 kg/m³
- **Hinges** - stainless, acid-proof, type 1.4301
- **Window** - round shape, stainless, acid-proof, type 1.4301
- **Buffers** preventing against damages

DW-N SINGLE LEAF						
S \ H	2000	2100	2200	2300	2400	2500
700	992	1007	1022	1037	1052	1068
800	1023	1040	1056	1073	1089	1106
900	1054	1072	1090	1108	1126	1144
1000	1085	1105	1124	/	/	/
1100	1116	1137	1158	/	/	/
1200	1148	1170	1192	/	/	/
1300	1178	1202	1226	/	/	/

DW-N DOUBLE LEAF						
S \ H	2000	2100	2200	2300	2400	2500
1200	1593	1615	1638	1661	1684	1707
1300	1631	1656	1680	1704	1729	1753
1400	1670	1696	1722	1748	1773	1799
1500	1709	1736	1763	1791	1818	1845
1600	1748	1776	1805	1834	1862	1891
1700	1786	1816	1847	1877	1907	1937
1800	1825	1857	1888	1920	1952	1983
1900	1864	1897	1930	1963	1996	2029
2000	1903	1937	1972	/	/	/
2100	1942	1977	2013	/	/	/
2200	1980	2018	2055	/	/	/
2300	2019	2058	2097	/	/	/
2400	2058	2098	2138	/	/	/
2500	2097	2138	2180	/	/	/
2600	2135	2178	2222	/	/	/

www.panelitech.pl



PANELTECH[®]