

INDUSTRIAL DOORS

- COLDROOM AND FREEZER DOORS
- GAS-TIGHT SLIDING DOORS
- SWING DOORS
- UNIVERSAL HINGED DOORS



COLDROOM AND FREEZER HINGED DOOR “DR” TYPE



APPLICATION

DR type door are applied in coldrooms and freezers within the temperature range from -40°C to $+50^{\circ}\text{C}$. The structure of the door ensures its strength and durability. High insulation value has been achieved thanks to polyurethane foam core (PUR).

DOOR LEAF

DR doors are produced in 3 versions. In DRE (ECO) and DRS (STANDARD) version door leaf is made of sandwich panel with PIR core and framed by steel channel section. In DRK (PREMIUM) version door leaf is produced on the press, by high pressure injection of PUR foam into door framework. The density of PUR core is not less than 40 kg/m^3 .

Available thicknesses:

- 60, 80 mm - coldroom door (single and double leaf)
- 100 mm, 120 mm, 150mm, 160mm - freezer door (single and double leaf)

ECO and STANDARD door leaf finish (sandwich panel):

- Galvanized steel sheet (L) thickness 0,5 mm, coated with polyester paint in white colour RAL 9010

PREMIUM door leaf finish:

- Stainless, acid-proof steel (N), type 1.4301, thickness 0,8 mm, mat surface 2B
- Galvanized steel sheet (L) thickness 0,75 mm, coated with polyester paint in white colour RAL 9010

FRAME TYPE

In DRE and DRS version door frame is filled with PUR foam. It is made of stainless, acid-proof steel (N), type 1.4301, thickness 0,8 mm, mat surface 2B or galvanized steel sheet (L) thickness 0,75 mm, coated with polyester paint in white colour (RAL 9010).

Freezer door frame and threshold are equipped in heating system (heating cable, 230 V, 40 W/rm)

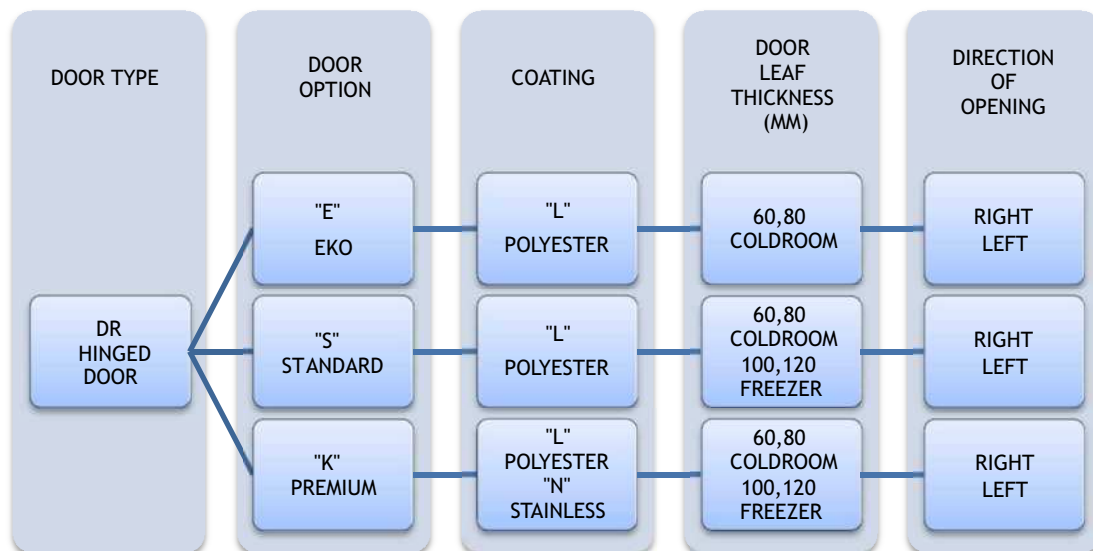
DRE version is equipped in angle bar shaped frame, which is made of galvanized steel sheet (L) thickness 0,75 mm, coated with polyester paint in white colour (RAL 9010).

HINGES

Hinges are delivered by FERMOD. Thanks to door lifting option during opening and closing the hinges prevent the lower gasket from friction.

OPTIONS

- Untypical door leaf finish:
 - Stainless, acid-proof steel (N), type 1.4301, thickness 0,8 mm, grinded surface 4B or grained surface
 - Galvanized steel sheet (L) thickness 0,75 mm, coated with polyester paint other than white RAL 9010
 - panel made of polyester resins reinforced with glass fibre in RAL 9016 with stainless, acid-proof door leaf framing (N), type 1.4301
- Availability to produce door with and without a threshold (lower element is installed in the floor):
- Door windows
 - Round window $\varnothing 280$ mm
 - Window in a different shape and dimension (special enquiry)
 - Execution of opening for a individual glazing
- Door adjusted to top railway system
- Flashing of the door opening



Enquiry/order example:



DRK-L 60 - coldroom hinged door, polyester paint finish, door leaf thickness 60 mm, direction of opening to the right.

STANDARD HINGED DOOR - POLYESTER DRS-L 60 T>0 ° C (COLDROOM)

Characteristic:

- Door leaf made of sandwich panel with PIR core 60 mm
- Door finish - galvanized steel sheet coated with polyester paint in white colour RAL 9010
- Door leaf framing - steel channel section, made of steel sheet coated with polyester paint in white colour RAL 9010
- Lock - delivered by FERMOD
- Hinges - delivered by FERMOD
- Frame - complex and profiled, made of steel sheet coated with polyester paint in RAL 9010
- Lower element - channel section made of stainless, acid-proof steel sheet, type 1.4301

DRS-L 60 SINGLE LEAF									
S \ H	1700	1800	1900	2000	2100	2200	2300	2400	2500
700	612	621	629	638	647	682	717	752	787
800	628	638	648	657	666	704	741	779	816
900	646	656	666	676	686	726	766	806	845
1000	663	674	684	695	706	748	790	832	874
1100	716	729	741	753	765	812	859	906	953
1200	744	758	771	785	798	850	902	954	1 006
1300	763	777	792	806	820	875	929	983	1 038
1400	782	797	812	827	842	899	956	1 013	1 070
1500	801	817	833	848	864	923	983	1 043	1 103

DRS-L 80 DOUBLE LEAF						
S \ H	2000	2100	2200	2300	2400	2500
1400	1 109	1 124	1 140	1 155	1 170	1 185
1500	1 128	1 144	1 160	1 176	1 192	1 207
1600	1 148	1 164	1 181	1 197	1 213	1 230
1700	1 167	1 184	1 201	1 218	1 235	1 252
1800	1 186	1 204	1 222	1 239	1 257	1 275
1900	1 205	1 224	1 242	1 260	1 279	1 297
2000	1 225	1 244	1 263	1 282	1 301	1 320
2100	1 244	1 264	1 283	1 303	1 322	1 342
2200	1 263	1 283	1 304	1 324	1 344	1 365
2300	1 282	1 303	1 324	1 345	1 366	1 387
2400	1 301	1 323	1 345	1 366	1 388	1 409
2500	1 321	1 343	1 365	1 388	1 410	1 432
2600	1 340	1 363	1 386	1 409	1 431	1 454

Options:

- door leaf made of PIR sandwich panel thickness 80 mm - surcharge of 15 EUR/m²
- window, size 400 mm x 600 mm - surcharge of 105 EUR

PREMIUM HINGED DOORS - POLYESTER DRK-L 60 T>0 ° C (COLDROOM)

Characteristic:

- Door leaf thickness 60 mm, produced on the press, by high pressure injection of PUR foam into door framework
- Door finish - galvanized steel sheet coated with polyester paint in white colour RAL 9010
- Door leaf core - polyurethane foam, density of minimum 40 kg/m³
- Lock - delivered by FERMOD
- Hinges - delivered by FERMOD
- Frame - complex and profiled, made of steel sheet coated with polyester paint in RAL 9010
- Lower element - channel section made of stainless, acid-proof steel sheet, type 1.4301

DRK-L 60 SINGLE LEAF									
S \ H	1700	1800	1900	2000	2100	2200	2300	2400	2500
700	647	662	677	692	707	721	787	803	818
800	665	675	685	695	714	733	803	823	843
900	682	693	704	715	734	754	826	847	868
1000	729	735	740	746	804	814	880	891	901
1100	798	810	823	835	848	861	933	946	960
1200	802	815	828	840	853	877	948	960	971
1300	838	853	868	883	898	913	989	1002	1015
1400	855	870	885	900	915	929	1004	1080	1093
1500	890	906	922	937	953	969	1076	1157	1171

DRK-L 80 DOUBLE LEAF						
S \ H	2000	2100	2200	2300	2400	2500
1400	1186	1201	1215	1229	1243	1258
1500	1198	1218	1238	1257	1277	1296
1600	1211	1235	1260	1285	1310	1335
1700	1235	1259	1287	1316	1344	1373
1800	1259	1282	1314	1347	1379	1411
1900	1283	1305	1341	1377	1413	1450
2000	1308	1328	1368	1408	1448	1488
2100	1315	1351	1389	1427	1465	1527
2200	1322	1374	1410	1446	1483	1598
2300	1326	1396	1458	1466	1500	1671
2400	1330	1419	1507	1529	1564	1744
2500	1334	1441	1556	1592	1629	1817

Options:

- door leaf thickness 80 mm - surcharge of 30 EUR/m²
- window, size 400 mm x 600 mm - surcharge of 105 EUR
- door made in colour other than RAL 9010 - surcharge of 60 EUR/m²

PREMIUM HINGED DOORS - STAINLESS DRK-N 60 T>0 °C (COLDROOM)

Characteristic:

- Door leaf thickness 60 mm, produced on the press, by high pressure injection of PUR foam into door framework
- Door finish - stainless, acid-proof steel, type 1.4301, mat surface 2B or grinded surface 4N (option)
- Door leaf core - polyurethane foam, density of minimum 40 kg/m³
- Lock - delivered by FERMOD
- Hinges - delivered by FERMOD
- Frame - complex and profiled, made of stainless, acid-proof mat surface 2B or grinded surface 4N (option)
- Lower element - channel section made of stainless, acid-proof steel sheet, type 1.4301

DRK-N 60 SINGLE LEAF									
S \ H	1700	1800	1900	2000	2100	2200	2300	2400	2500
700	807	810	831	852	873	893	914	935	953
800	837	857	878	899	918	937	956	976	995
900	866	888	909	930	951	973	994	1015	1036
1000	905	931	956	981	1004	1024	1045	1065	1086
1100	963	987	1011	1036	1060	1085	1109	1134	1158
1200	974	1004	1034	1064	1095	1120	1142	1163	1185
1300	1024	1054	1084	1114	1144	1174	1201	1227	1254
1400	1063	1093	1122	1152	1182	1211	1233	1321	1350
1500	1102	1131	1161	1190	1220	1249	1319	1415	1446

DRK-N 80 DOUBLE LEAF						
S \ H	2000	2100	2200	2300	2400	2500
1400	1379	1421	1463	1505	1547	1590
1500	1401	1443	1485	1527	1569	1611
1600	1424	1466	1508	1549	1591	1633
1700	1469	1505	1548	1591	1634	1677
1800	1514	1544	1588	1632	1676	1721
1900	1559	1583	1628	1673	1719	1764
2000	1604	1621	1668	1715	1761	1808
2100	1649	1660	1689	1736	1783	1852
2200	1694	1699	1711	1757	1804	1940
2300	1716	1742	1771	1778	1825	2028
2400	1739	1785	1832	1855	1904	2116
2500	1761	1828	1893	1932	1983	2203

Options:

- door leaf thickness 80 mm - surcharge of 30 EUR/m²
- window, size 400 mm x 600 mm - surcharge of 105 EUR

STANDARD HINGED DOOR - POLYESTER DRS-L 100 T>-25 °C (FREEZER)

Characteristic:

- Door leaf made of sandwich panel with PIR core 100 mm
- Door finish - galvanized steel sheet coated with polyester paint in white colour RAL 9010
- Door leaf framing - steel channel section, made of steel sheet coated with polyester paint in white colour RAL 9010
- Lock - delivered by FERMOD
- Hinges - delivered by FERMOD
- Frame - complex and profiled, made of steel sheet coated with polyester paint in RAL 9010
- Lower element - channel section made of stainless, acid-proof steel sheet, type 1.4301

DRS-L 100 SINGLE LEAF									
S \ H	1700	1800	1900	2000	2100	2200	2300	2400	2500
700	776	788	799	810	821	849	878	906	935
800	799	814	829	844	860	882	905	927	950
900	821	841	860	879	898	915	932	948	964
1000	844	860	877	893	910	932	954	976	999
1100	871	885	899	913	928	956	985	1014	1043
1200	880	899	917	935	953	978	1003	1027	1052
1300	890	912	935	957	979	1006	1033	1061	1105
1400	927	950	974	997	1021	1041	1061	1106	1190
1500	964	989	1013	1038	1062	1073	1122	1171	1219

DRS-L 100 DOUBLE LEAF						
S \ H	2000	2100	2200	2300	2400	2500
1400	1510	1537	1557	1581	1603	1624
1500	1536	1560	1584	1608	1633	1658
1600	1561	1585	1610	1636	1664	1692
1700	1585	1610	1636	1664	1692	1720
1800	1610	1637	1664	1692	1777	1805
1900	1754	1782	1805	1833	1867	1895
2000	1777	1805	1837	1866	1895	1923
2100	1805	1833	1864	1894	1923	1953
2200	1830	1861	1890	1922	1952	1983
2300	1854	1887	1918	1949	1981	2012
2400	1880	1912	1945	1977	2009	2045
2500	1905	1938	1971	2004	2042	2073

Options:

- door leaf made of PIR sandwich panel thickness 120 mm - surcharge of 15 EUR/m²
- door leaf made of PIR sandwich panel thickness 160 mm - surcharge of 40 EUR/m²
- window, size 400 mm x 600 mm - surcharge of 105 EUR

PREMIUM HINGED DOORS - POLYESTER DRK-L 100 T>-25 °C (FREEZER)

Characteristic:

- Door leaf thickness 100 mm, produced on the press, by high pressure injection of PUR foam into door framework
- Door finish - galvanized steel sheet coated with polyester paint in white colour RAL 9010
- Door leaf core - polyurethane foam, density of minimum 40 kg/m³
- Lock - delivered by FERMOD
- Hinges - delivered by FERMOD
- Frame - complex and profiled, made of steel sheet coated with polyester paint in RAL 9010
- Lower element - channel section made of stainless, acid-proof steel sheet, type 1.4301

DRK-L 100 SINGLE LEAF									
S \ H	1700	1800	1900	2000	2100	2200	2300	2400	2500
700	842	857	872	886	901	916	930	945	960
800	869	885	901	916	932	948	963	979	995
900	896	913	929	946	963	980	997	1014	1031
1000	938	961	983	1006	1055	1076	1084	1085	1085
1100	945	963	981	998	1043	1044	1058	1078	1099
1200	986	1008	1031	1053	1075	1094	1114	1133	1152
1300	1016	1037	1059	1081	1103	1125	1140	1154	1177
1400	1045	1067	1089	1112	1134	1156	1170	1217	1268
1500	1074	1097	1119	1142	1165	1187	1232	1286	1339

DRK-L 100 DOUBLE LEAF						
S \ H	2000	2100	2200	2300	2400	2500
1400	1663	1690	1709	1733	1755	1776
1500	1688	1712	1736	1760	1785	1810
1600	1713	1737	1762	1787	1815	1843
1700	1737	1762	1787	1815	1843	1871
1800	1762	1789	1815	1843	1927	1955
1900	1905	1933	1955	1983	2016	2044
2000	1927	1955	1987	2015	2044	2072
2100	1955	1983	2014	2043	2072	2102
2200	1980	2011	2039	2071	2100	2131
2300	2004	2036	2067	2097	2130	2160
2400	2029	2061	2093	2125	2157	2192
2500	2054	2086	2120	2152	2190	2220

Options:

- door leaf thickness 120 mm - surcharge of 30 EUR/m²
- door leaf made of PIR sandwich panel thickness 150 mm - surcharge of 60 EUR/m²
- window, size 400 mm x 600 mm - surcharge of 105 EUR
- door made in colour other than RAL 9010 - surcharge of 60 EUR/m²

PREMIUM HINGED DOORS - STAINLESS DRK-N 100 T>-25 °C (FREEZER)

Characteristic:

- Door leaf thickness 100 mm, produced on the press, by high pressure injection of PUR foam into door framework
- Door finish - stainless, acid-proof steel, type 1.4301, mat surface 2B or grinded surface 4N (option)
- Door leaf core - polyurethane foam, density of minimum 40 kg/m³
- Lock - delivered by FERMOD
- Hinges - delivered by FERMOD
- Frame - complex and profiled, made of stainless, acid-proof mat surface 2B or grinded surface 4N (option)
- Lower element - channel section made of stainless, acid-proof steel sheet, type 1.4301

DRK-N 100 SINGLE LEAF									
S \ H	1700	1800	1900	2000	2100	2200	2300	2400	2500
700	1002	1028	1053	1078	1104	1129	1155	1180	1205
800	1041	1067	1093	1120	1147	1175	1203	1231	1259
900	1079	1108	1136	1164	1194	1223	1253	1283	1312
1000	1138	1171	1204	1237	1266	1300	1335	1370	1404
1100	1160	1188	1216	1243	1271	1316	1360	1405	1450
1200	1194	1225	1256	1287	1318	1349	1403	1457	1511
1300	1232	1264	1297	1329	1362	1395	1424	1458	1516
1400	1269	1304	1338	1372	1406	1440	1498	1557	1624
1500	1307	1343	1379	1415	1451	1486	1545	1612	1679

DRK-N 100 DOUBLE LEAF						
S \ H	2000	2100	2200	2300	2400	2500
1400	1988	2021	2054	2086	2122	2152
1500	2026	2059	2095	2128	2163	2196
1600	2059	2095	2130	2166	2204	2240
1700	2095	2133	2170	2207	2245	2281
1800	2255	2293	2331	2370	2410	2448
1900	2290	2330	2370	2410	2451	2505
2000	2327	2367	2410	2451	2492	2546
2100	2363	2404	2451	2489	2533	2588
2200	2410	2464	2505	2538	2588	2629
2300	2451	2505	2546	2579	2623	2683
2400	2492	2533	2588	2618	2664	2738
2500	2533	2560	2615	2656	2711	2793

Options:

- door leaf thickness 120 mm - surcharge of 30 EUR/m²
- door leaf made of PIR sandwich panel thickness 150 mm - surcharge of 60 EUR/m²
- window, size 400 mm x 600 mm - surcharge of 105 EUR

PREMIUM HINGED FLUSH DOORS - POLYESTER DRKZ-L 80 T>0°C (COLDROOM)

Characteristic:

- Door leaf thickness 80 mm, produced on the press, by high pressure injection of PUR foam into door framework;
- Door finish - steel channel section, made of steel sheet coated with polyester paint in white colour RAL 9010
- Door leaf core - polyurethane foam, density of minimum min. 40 kg/m³
- Lock - delivered by FERMOD
- Hinges - delivered by FERMOD/RAHRBACH
- The frame flush with the external wall surface - complex and profiled, made of steel sheet coated with polyester paint in RAL 9010
- Lower element- channel section made of stainless, acid-proof steel sheet, type 1.4301

DRKZ-L 80 SINGLE LEAF									
S \ H	1700	1800	1900	2000	2100	2200	2300	2400	2500
700	826	845	863	881	901	920	939	958	978
800	849	861	874	887	911	935	959	983	1007
900	874	887	900	913	942	966	990	1014	1037
1000	935	943	950	958	1028	1041	1053	1066	1078
1100	1006	1022	1038	1053	1070	1086	1102	1117	1133
1200	1014	1030	1047	1063	1079	1109	1122	1152	1179
1300	1046	1065	1083	1102	1121	1140	1156	1186	1225

DRKZ-L 80 DOUBLE LEAF						
S \ H	2000	2100	2200	2300	2400	2500
1400	1274	1290	1305	1320	1336	1351
1500	1287	1308	1329	1350	1371	1392
1600	1300	1327	1354	1380	1407	1433
1700	1326	1352	1382	1413	1444	1475
1800	1352	1377	1411	1446	1481	1516
1900	1378	1401	1440	1479	1518	1557
2000	1404	1426	1469	1512	1555	1598
2100	1413	1451	1492	1533	1574	1640
2200	1420	1476	1514	1553	1592	1667
2300	1425	1500	1566	1574	1611	1694
2400	1429	1524	1619	1654	1690	1768
2500	1433	1548	1628	1694	1768	1842

Options:

- window, size 400 mm x 600 mm - surcharge of 105 EUR
- door made in colour other than RAL 9010 - surcharge of 60 EUR/m²

PREMIUM HINGED FLUSH DOORS - STAINLESS DRKZ-N 80 T>0°C (COLDROOM)

Characteristic:

- Door leaf thickness 80 mm, produced on the press, by high pressure injection of PUR foam into door framework;
- Door finish - stainless, acid-proof steel, type 1.4301, mat surface 2B or grinded surface 4N (option)
- Door leaf core - polyurethane foam, density of minimum min. 40 kg/m³
- Lock - delivered by FERMOD
- Hinges - delivered by FERMOD/RAHRBACH
- The frame flush with the external wall surface - complex and profiled, made of stainless, acid-proof mat surface 2B or grinded surface 4N (option)
- Lower element- channel section made of stainless, acid-proof steel sheet, type 1.4301

DRKZ-N 80 SINGLE LEAF									
S \ H	1700	1800	1900	2000	2100	2200	2300	2400	2500
700	968	971	997	1021	1046	1071	1096	1121	1143
800	1004	1028	1053	1078	1101	1124	1147	1170	1193
900	1039	1065	1090	1115	1141	1167	1192	1218	1243
1000	1086	1116	1146	1177	1204	1229	1253	1278	1303
1100	1117	1146	1174	1203	1231	1259	1287	1316	1345
1200	1152	1188	1223	1259	1295	1325	1351	1376	1402
1300	1212	1247	1282	1318	1353	1389	1420	1468	1506

DRKZ-N 80 DOUBLE LEAF						
S \ H	2000	2100	2200	2300	2400	2500
1400	1535	1582	1629	1676	1723	1770
1500	1560	1607	1654	1700	1747	1794
1600	1585	1632	1678	1725	1772	1818
1700	1635	1675	1723	1771	1819	1867
1800	1685	1718	1767	1817	1866	1915
1900	1690	1716	1765	1815	1864	1913
2000	1739	1758	1809	1859	1910	1961
2100	1788	1800	1832	1882	1933	2008
2200	1837	1842	1855	1905	1956	2039
2300	1861	1889	1921	1928	1979	2132
2400	1885	1936	1987	2047	2136	2238
2500	1910	1982	2053	2132	2225	2318

Options:

- window, size 400 mm x 600 mm - surcharge of 105 EUR

PREMIUM HINGED FLUSH DOORS - POLYESTER DRKZ-L 100 T>-25°C (FREEZER)

Characteristic:

- Door leaf thickness 100 mm, produced on the press, by high pressure injection of PUR foam into door framework;
- Door finish - steel channel section, made of steel sheet coated with polyester paint in white colour RAL 9010
- Door leaf core - polyurethane foam, density of minimum min. 40 kg/m³
- Lock - delivered by FERMOD
- Hinges - delivered by FERMOD/RAHRBACH
- the frame flush with the external wall surface - complex and profiled, made of steel sheet coated with polyester paint in RAL 9010
- Lower element- channel section made of stainless, acid-proof steel sheet, type 1.4301

DRKZ-L 100 SINGLE LEAF									
S \ H	1700	1800	1900	2000	2100	2200	2300	2400	2500
700	955	972	988	1005	1021	1038	1055	1071	1088
800	985	1003	1021	1039	1057	1074	1092	1110	1128
900	1015	1035	1053	1073	1092	1111	1130	1149	1168
1000	1064	1089	1115	1140	1195	1220	1229	1230	1230
1100	1112	1133	1154	1175	1227	1228	1244	1269	1293
1200	1160	1186	1212	1238	1264	1287	1310	1333	1355
1300	1195	1220	1246	1272	1298	1324	1341	1399	1457

DRKZ-L 100 DOUBLE LEAF						
S \ H	2000	2100	2200	2300	2400	2500
1400	1777	1806	1827	1852	1876	1898
1500	1804	1830	1855	1880	1907	1934
1600	1831	1856	1883	1910	1940	1970
1700	1856	1883	1910	1940	1970	2000
1800	1883	1912	1940	1970	2059	2089
1900	2035	2065	2089	2119	2155	2185
2000	2059	2089	2123	2153	2185	2215
2100	2089	2119	2152	2183	2215	2246
2200	2116	2149	2179	2213	2244	2277
2300	2141	2176	2209	2241	2276	2309
2400	2168	2203	2237	2271	2306	2343
2500	2195	2229	2265	2300	2340	2373

Options:

- window, size 400 mm x 600 mm - surcharge of 105 EUR
- door made in colour other than RAL 9010 - surcharge of 60 EUR/m²

PREMIUM HINGED FLUSH DOORS - STAINLESS DRKZ-N 100 T>-25°C (FREEZER)

Characteristic:

- Door leaf thickness 100 mm, produced on the press, by high pressure injection of PUR foam into door framework;
- Door finish - stainless, acid-proof steel, type 1.4301, mat surface 2B or grinded surface 4N (option)
- Door leaf core - polyurethane foam, density of minimum min. 40 kg/m³
- Lock - delivered by FERMOD
- Hinges - delivered by FERMOD/RAHRBACH
- The frame flush with the external wall surface - made of stainless, acid-proof mat surface 2B or grinded surface 4N (option)
- Lower element - channel section made of stainless, acid-proof steel sheet, type 1.4301

DRKZ-N 100 SINGLE LEAF									
S \ H	1700	1800	1900	2000	2100	2200	2300	2400	2500
700	1176	1206	1235	1265	1295	1324	1354	1384	1414
800	1221	1252	1282	1313	1346	1378	1411	1444	1477
900	1266	1299	1332	1366	1400	1435	1470	1504	1539
1000	1335	1374	1412	1450	1485	1525	1566	1606	1647
1100	1348	1380	1412	1445	1477	1529	1581	1633	1685
1200	1414	1450	1487	1524	1560	1597	1661	1725	1762
1300	1458	1497	1535	1574	1613	1651	1686	1721	1794

DRKZ-N 100 DOUBLE LEAF						
S \ H	2000	2100	2200	2300	2400	2500
1400	2187	2223	2259	2295	2334	2367
1500	2229	2265	2304	2340	2379	2416
1600	2265	2304	2343	2382	2425	2464
1700	2304	2346	2387	2428	2470	2509
1800	2480	2522	2565	2607	2650	2693
1900	2519	2563	2607	2650	2696	2756
2000	2560	2604	2650	2696	2741	2801
2100	2599	2644	2696	2738	2786	2846
2200	2650	2711	2756	2792	2846	2891
2300	2696	2756	2801	2837	2885	2952
2400	2741	2786	2846	2879	2931	3012
2500	2786	2816	2876	2922	2982	3072

Options:

- door leaf thickness 120 mm - surcharge of 30 EUR/m²
- window, size 400 mm x 600 mm - surcharge of 105 EUR



COLDROOM AND FREEZER SLIDING DOORS, “DP” TYPE

APPLICATION

DP doors are applied in coldrooms and freezers within the temperature from -40°C to $+50^{\circ}\text{C}$. The structure of the door ensures its strength and durability. High insulation value has been achieved thanks to polyurethane foam core (PUR).

DP - lightweight, up to 120 kg

DP - heavyweight, up to 400 kg

DOOR LEAF

DP doors are available in 2 versions: In DPS (STANDARD) version door leaf is made of sandwich panel with PIR core and framed by steel channel section. In DPK (PREMIUM) version door leaf is produced on the press, by high pressure injection of PUR foam into door framework. The density of PUR core is not less than $40\text{kg}/\text{m}^3$.

Available thicknesses:

- 60, 80 mm - coldroom door (single and double leaf)
- 100, 120, 150, 160mm - freezer door (single and double leaf)

STANDARD door leaf finish (sandwich panel):

- Galvanized steel sheet (L) thickness 0,5 mm, coated with polyester paint in white colour RAL 9010

PREMIUM door leaf finish:

- Stainless, acid-proof steel (N), type 1.4301, thickness 0,8 mm, mat surface 2B
- Galvanized steel sheet (L) thickness 0,75 mm, coated with polyester paint in white colour RAL 9010

Door leaf is equipped with gasket delivered by FERMOD (F).

FRAME TYPE

In both DPS and DPK version door frame is filled with PUR foam. It is made of stainless, acid-proof steel (N), type 1.4301, thickness 1,5 mm, mat surface 2B or galvanized steel sheet (L) thickness 1,5 mm, coated with polyester paint in white colour (RAL 9010).

Freezer door frame and threshold are equipped in heating system (heating cable, 230 V, 40 W/rm).

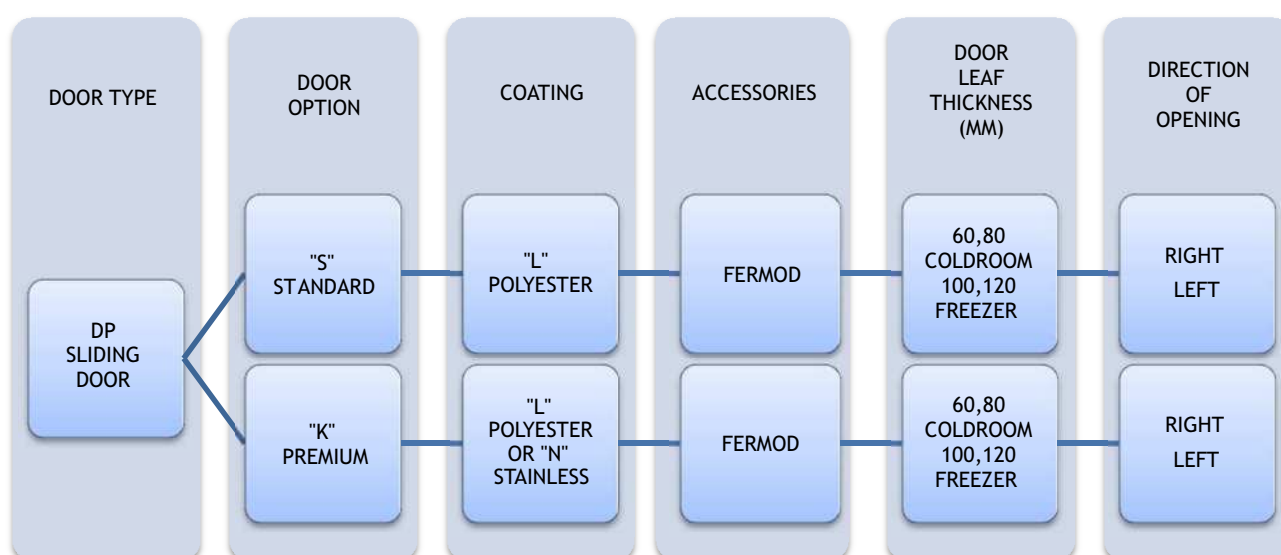
Lock is delivered by FERMOD (F). It is equipped with patent insert with possibility of emergency opening from the inside even if the door is locked.

ACCESSORIES

- FERMOD accessories (F), aluminium rail - lightweight type
- FERMOD accessories (F), galvanized steel or stainless steel rail - heavyweight type
- FERMOD accessories (F), stainless steel rail - lightweight type (option)
- FERMOD accessories (F), stainless steel rail - heavyweight type (option)

OPTIONS

- Untypical door leaf finish:
 - Stainless, acid-proof steel (N), type 1.4301, thickness 0,8 mm, grinded surface 4B or grained surface
 - Galvanized steel sheet (T) thickness 0,75 mm, coated with polyester paint other than white
 - panel made of polyester resins reinforced with glass fibre in RAL 9016 with stainless, acid-proof door leaf framing (N), type 1.4301
- Availability to produce door with and without a threshold (lower element is installed in the floor)
- Flashing of the door opening
- Application of automatic kits delivered by FERMOD (F)
- Door windows:
 - Round window $\varnothing 280$ mm
 - Window in a different shape (special enquiry)
- Door adjusted to top railway system



Enquiry/order example:



DPK-NF 60 - Premium coldroom sliding door, stainless steel finish, FERMOD accessories, door leaf thickness 60 mm, direction of opening to the right.

STANDARD SLIDING DOOR - POLYESTER - FERMOD ACCESSORIES - DPS-LF 60 T>0 °C (COLDROOM)

Characteristic:

- Door leaf made of sandwich panel with PIR core 60 mm
- Door finish - galvanized steel sheet, coated with polyester paint in white colour RAL 9010
- Door leaf framing - steel channel section, made of stainless, acid-proof steel sheet, type 1.4301
- Frame - complex and profiled, made of steel sheet coated with polyester paint in RAL 9010
- Accessories - delivered by FERMOD, made of aluminium
- Lower element - channel section made of stainless, acid-proof steel sheet, type 1.4301

DPS-LF 60 SINGLE LEAF								
S \ H	1800	1900	2000	2100	2200	2300	2400	2500
800	1302	1312	1321	1331	1340	1350	1359	1369
900	1320	1331	1342	1352	1363	1373	1384	1394
1000	1339	1350	1362	1373	1384	1396	1407	1419
1100	1429	1441	1453	1465	1477	1489	1501	1512
1200	1474	1487	1500	1513	1526	1539	1552	1565
1300	1544	1558	1572	1586	1600	1615	1629	1643
1400	1582	1597	1612	1627	1642	1657	1672	1687
1500	1622	1637	1653	1669	1685	1701	1717	1733
1600	1661	1678	1695	1711	1728	1745	1762	1779
1700	1777	1794	1811	1828	1845	1863	1880	1897
1800	1795	1813	1831	1849	1867	1885	1903	1921
1900	1841	1860	1879	1898	1912	1927	1941	1956
2000	1887	1907	1927	1946	1966	1986	2006	2025

S \ H	2500	2600	2700	2800	3000	3200	3400	3600	3800	4000
1500	1733	1737	1742	1755	1776	1893	1926	1959	1993	2026
1600	1779	1821	1846	1857	1879	2002	2037	2072	2106	2141
1700	1897	1914	1937	1960	1983	2112	2148	2184	2220	2256
1800	1921	1939	1963	1987	2011	2144	2181	2219	2257	2295
1900	1956	1964	1989	2015	2040	2175	2215	2255	2294	2334
2000	2025	2045	2072	2099	2126	2268	2309	2351	2392	2433
2200	2076	2102	2129	2156	2183	2331	2376	2421	2466	2957
2400	2181	2218	2255	2291	2328	2476	2514	2552	3073	3124
2600	2341	2374	2406	2439	2472	2560	2648	3191	3241	3292
2800	2523	2562	2601	2640	2679	2719	3205	3270	3335	3400
3000	2613	2650	2688	2725	2762	3279	3337	3394	3452	3509

Prices in bold refer to doors with heavy system, door leaf made of PIR sandwich panel thickness 80 mm

Options:

- door leaf made of PIR sandwich panel thickness 80 mm - surcharge of 15 EUR/m²
- window, size 400 mm x 600 mm - surcharge of 105 EUR
- lock with patent insert with possibility of opening from the inside - surcharge of 160 EUR
- handle support (lever) for light-weight door - surcharge of 160 EUR (in heavy-weight door this option is included free of charge)

STANDARD SLIDING DOOR - POLYESTER - FERMOD ACCESSORIES - DPS-LF 60 T>0 °C (COLDROOM)

Characteristic:

- Door leaf made of sandwich panel with PIR core 100 mm
- Door finish - galvanized steel sheet, coated with polyester paint in white colour RAL 9010
- Door leaf framing - steel channel section, made of stainless, acid-proof steel sheet, type 1.4301
- Frame - complex and profiled, made of steel sheet coated with polyester paint in RAL 9010
- Accessories - delivered by FERMOD, made of aluminium
- Lower element - channel section made of stainless, acid-proof steel sheet, type 1.4301

DPS-LF 60 DOUBLE LEAF								
S \ H	1800	1900	2000	2100	2200	2300	2400	2500
1000	2733	2740	2752	2765	2777			
1100	2752	2757	2765	2777	2794			
1200	2862	2874	2881	2891	2898	2910		
1300	2886	2893	2903	2910	2922	2934		
1400	2985	2996	3005	3019	3031	3043	3056	3068
1500	3007	3017	3031	3043	3056	3068	3068	3080
1600	3092	3104	3116	3128	3140	3153	3165	3177
1700	3109	3121	3136	3150	3162	3172	3189	3206
1800	3131	3143	3153	3165	3177	3189	3201	3225
1900	3225	3237	3250	3262	3274	3286	3298	3310
2000	3250	3262	3274	3286	3298	3310	3322	3334

S \ H	2200	2500	2800	3000	3500	4000	4500	4800
2200	3444	3492	3541	3589				
2500	5917	5968	6014	6063	6184	6305	6426	6523
2700	6014	6038	6087	6135	6257	6390	6523	6620
3000	6244	6295	6343	6378	6458	6548	6623	6705
3200	6317	6378	6426	6463	6548	6632	6717	6802
3400	6366	6419	6475	6509	6601	6693	6822	6911
3600	6611	6669	6729	6766	6863	6955	7105	7183
3800	6657	6717	6778	6814	6919	7013	7154	7251
4000	6705	6766	6826	6870	6989	7154	9676	7348
4100	7110	7178	7246	7288	7396	7549	7663	7727
4400	7845	7918	8003	8051	8197	8306	8427	8512
4600	7918	8003	8075	8124	8269	8386	8517	8609
4800	8092	8172	8245	8310	8446	8582	8718	8798
5000	8221	8310	8397	8455	8599	8743	8888	8973

Prices in bold refer to doors with heavy system, door leaf made of PIR sandwich panel thickness 80 mm

Options:

- door leaf made of PIR sandwich panel thickness 80 mm - surcharge of 15 EUR/m²
- window, size 400 mm x 600 mm - surcharge of 105 EUR
- lock with patent insert with possibility of opening from the inside - surcharge of 720 EUR
- handle support (lever) for light-weight door - surcharge of 160 EUR (in heavy-weight door this option is included free of charge)

STANDARD SLIDING DOOR - POLYESTER - FERMOD ACCESSORIES - o DPS-LF 100 T > 0 °C (FREEZER)

Characteristic:

- **Door leaf** made of sandwich panel with PIR core 100 mm
- **Door finish** - galvanized steel sheet, coated with polyester paint in white colour RAL 9010
- **Door leaf framing** - steel channel section, made of stainless, acid-proof steel sheet, type 1.4301
- **Frame** - complex and profiled, made of steel sheet coated with polyester paint in RAL 9010
- **Accessories** - delivered by FERMOD, made of aluminium up to 400 kg
- **Lower element** - channel section made of stainless, acid-proof steel sheet, type 1.4301

DPS-LF 100 SINGLE LEAF						
S \ H	2500	3000	3500	4000	4500	5000
3000	/	/	/	/	6084	6197
3500	7062	7206	7326*	7446*	7566*	7686*
4000	7302	7446	7556*	7806*	7926*	8070*
4500	7662	7806	7962*	8118*	8287*	8407*
5000	8647	8815	9007*	9127*	9271*	9439*
5500	8983	9127	9319*	9488*	9656*	/
6000	9608	9800	9968*	10160*	/	/

*door leaf to be self-assembled on the construction site

Options:

- window, size 400 mm x 600 mm - surcharge of 105 EUR
- lock with patent insert with possibility of opening from the inside - surcharge of 310 EUR

STANDARD SLIDING DOOR - POLYESTER - FERMOD ACCESSORIES - DPS-LF 100 T> -25°C (FREEZER)

Characteristic:

- Door leaf made of sandwich panel with PIR core 100 mm
- Door finish - galvanized steel sheet, coated with polyester paint in white colour RAL 9010
- Door leaf framing - steel channel section, made of stainless, acid-proof steel sheet, type 1.4301
- Frame - complex and profiled, made of steel sheet coated with polyester paint in RAL 9010
- Accessories - delivered by FERMOD, made of aluminium
- Lower element - channel section made of stainless, acid-proof steel sheet, type 1.4301

DPS-LF 100 SINGLE LEAF								
S \ H	1800	1900	2000	2100	2200	2300	2400	2500
800	1520	1535	1550	1565	1578	1591	1604	1617
900	1542	1558	1573	1589	1604	1618	1632	1647
1000	1565	1581	1597	1613	1629	1645	1661	1677
1100	1664	1695	1704	1713	1730	1746	1763	1779
1200	1717	1735	1753	1771	1788	1806	1824	1842
1300	1798	1809	1821	1833	1857	1882	1907	1932
1400	1842	1862	1882	1903	1923	1943	1963	1983
1500	1885	1906	1927	1948	1970	1991	2012	2033
1600	1928	1950	1972	1995	2017	2039	2061	2083
1700	2047	2069	2092	2114	2136	2159	2181	2204
1800	2068	2092	2116	2139	2163	2186	2209	2233
1900	2121	2146	2170	2195	2219	2244	2268	2292
2000	2174	2199	2225	2250	2276	2301	2327	2352

S \ H	2500	2600	2700	2800	3000	3200	3400	3600	3800	4000
1500	2033	2044	2054	2064	2091	2233	2276	2319	2362	2405
1600	2083	2114	2144	2175	2204	2353	2398	2443	2488	2533
1700	2204	2227	2257	2286	2316	2473	2520	2567	2615	2661
1800	2233	2260	2290	2320	2351	2511	2560	2609	2659	2707
1900	2292	2286	2319	2352	2385	2548	2600	2651	2702	2753
2000	2352	2377	2412	2446	2480	2618	2638	2659	2747	2773
2200	2410	2445	2479	2513	2548	2699	2730	2761	2791	3428
2400	2528	2565	2602	2639	2675	2802	2894	2987	3544	3610
2600	2789	2830	2871	2913	2955	3020	3086	3665	3728	3792
2800	2869	2918	2968	3016	3065	3114	3679	3758	3837	3916
3000	3032	3063	3094	3156	3218	3753	3825	3897	3968	4040

Prices in bold refer to doors with heavy system

Options:

- door leaf made of PIR sandwich panel thickness 120 mm - surcharge of 15 EUR/m²
- door leaf made of PIR sandwich panel thickness 160 mm - surcharge of 40 EUR/m²
- window, size 400 mm x 600 mm - surcharge of 105 EUR
- lock with patent insert with possibility of opening from the inside - surcharge of 160 EUR
- handle support (lever) for light-weight door - surcharge of 160 EUR (in heavy-weight door this option is included free of charge)

STANDARD SLIDING DOOR - POLYESTER - FERMOD ACCESSORIES - DPS-LF 100 T> -25°C (FREEZER)

Characteristic:

- Door leaf made of sandwich panel with PIR core 100 mm
- Door finish - galvanized steel sheet, coated with polyester paint in white colour RAL 9010
- Door leaf framing - steel channel section, made of stainless, acid-proof steel sheet, type 1.4301
- Frame - complex and profiled, made of steel sheet coated with polyester paint in RAL 9010
- Accessories - delivered by FERMOD, made of aluminium
- Lower element - channel section made of stainless, acid-proof steel sheet, type 1.4301

DPS-LF 100 DOUBLE LEAF								
S \ H	1800	1900	2000	2100	2200	2300	2400	2500
1000	3097	3104	3116	3128	3140			
1100	3116	3121	3128	3140	3157			
1200	3225	3237	3245	3254	3262	3274		
1300	3250	3257	3266	3274	3286	3298		
1400	3349	3360	3368	3383	3395	3407	3419	3431
1500	3371	3380	3395	3407	3419	3431	3431	3444
1600	3456	3468	3480	3492	3504	3516	3528	3541
1700	3473	3485	3499	3514	3526	3536	3553	3570
1800	3494	3507	3516	3528	3541	3553	3565	3589
1900	3589	3601	3613	3625	3638	3650	3662	3674
2000	3613	3625	3638	3650	3662	3674	3686	3698

S \ H	2200	2500	2800	3000	3500	4000
2200	3807	3856	3904	3953		
2500	6281	6332	6378	6426	6548	6669
2700	6378	6402	6451	6499	6620	6754
3000	6608	6659	6706	6742	6822	6911
3200	6681	6742	6790	6826	6911	6996
3400	6729	6783	6839	6872	6965	7057
3600	6974	7033	7093	7130	7227	7319
3800	7020	7081	7142	7178	7282	7377
4000	7069	7130	7190	7234	7353	7518

Prices in bold refer to doors with heavy system

Options:

- door leaf made of PIR sandwich panel thickness 120 mm - surcharge of 15 EUR/m²
- window, size 400 mm x 600 mm - surcharge of 105 EUR
- lock with patent insert with possibility of opening from the inside - surcharge of 720 EUR
- handle support (lever) for light-weight door - surcharge of 160 EUR (in heavy-weight door this option is included free of charge)

PREMIUM SLIDING DOOR - POLYESTER - FERMOD ACCESSORIES - DPK-LF 60 T>0 °C (COLDROOM)

Characteristic:

- Door leaf thickness 60 mm, produced on the press, by high pressure injection of PUR foam into door framework
- Door finish - galvanized steel sheet coated with polyester paint in white colour RAL 9010
- Door leaf core - polyurethane foam, density of minimum 40 kg/m³
- Frame - complex and profiled, made of steel sheet coated with polyester paint in RAL 9010
- Accessories - delivered by FERMOD, made of aluminium
- Lower element - channel section made of stainless, acid-proof steel sheet, type 1.4301

DPK-LF 60 SINGLE LEAF								
S \ H	1800	1900	2000	2100	2200	2300	2400	2500
800	1372	1380	1389	1398	1407	1416	1425	1433
900	1389	1398	1408	1418	1427	1437	1446	1456
1000	1406	1417	1427	1437	1448	1458	1468	1479
1100	1459	1471	1482	1493	1504	1516	1527	1538
1200	1512	1524	1537	1549	1561	1574	1586	1598
1300	1605	1618	1632	1645	1658	1672	1685	1698
1400	1643	1648	1653	1658	1663	1689	1714	1739
1500	1680	1696	1712	1728	1744	1760	1777	1793
1600	1716	1732	1747	1763	1778	1804	1831	1847
1700	1848	1866	1884	1901	1919	1937	1954	1972
1800	1980	1996	2013	2030	2047	2064	2081	2098
1900	2025	2043	2060	2078	2096	2113	2131	2149
2000	2070	2092	2114	2135	2157	2178	2200	2344

S \ H	2500	2600	2700	2800	3000
1500	1793	1809	1861	1912	1964
1600	1847	1900	1918	1954	1990
1700	1972	2082	2121	2186	2503
1800	2098	2174	2251	2403	2522
1900	2149	2443	2499	2529	2559
2000	2344	2505	2555	2594	2633
2200	2524	2568	2611	2659	2708
2400	2826	2898	2970	2978	2985

Prices in bold refer to doors with heavy system, door leaf 80mm thickness

Options:

- door leaf thickness 80 mm - surcharge of 30 EUR/m²
- window, size 400 mm x 600 mm - surcharge of 105 EUR
- lock with patent insert with possibility of opening from the inside - surcharge of 160 EUR
- door made in colour other than RAL 9010 - surcharge of 60 EUR/m²
- handle support (lever) for light-weight door - surcharge of 160 EUR (in heavy-weight door this option is included free of charge)

PREMIUM SLIDING DOOR - POLYESTER - FERMOD ACCESSORIES - DPK-LF 60 T>0 °C (COLDROOM)

Characteristic:

- **Door leaf thickness** 60 mm, produced on the press, by high pressure injection of PUR foam into door framework
- **Door finish** - galvanized steel sheet coated with polyester paint in white colour RAL 9010
- **Door leaf core** - polyurethane foam, density of minimum 40 kg/m³
- **Frame** - complex and profiled, made of steel sheet coated with polyester paint in RAL 9010
- **Accessories** - delivered by FERMOD, made of aluminium
- **Lower element** - channel section made of stainless, acid-proof steel sheet, type 1.4301

DPK-LF 60 DOUBLE LEAF								
S \ H	1800	1900	2000	2100	2200	2300	2400	2500
1000	2875	2882	2894	2911	2942			
1100	2906	2894	2906	2930	2966			
1200	2990	3002	3010	3019	3026	3038		
1300	3007	3014	3026	3034	3041	3050		
1400	3074	3086	3094	3103	3122	3134	3154	3195
1500	3129	3138	3146	3159	3171	3178	3190	3209
1600	3226	3239	3247	3257	3267	3279	3288	3298
1700	3326	3339	3351	3363	3375	3387	3399	3411
1800	3339	3351	3375	3387	3406	3418	3430	3447
1900	3423	3435	3447	3459	3471	3483	3495	3507
2000	3459	3476	3490	3502	3514	3524	3543	3579

S \ H	2200	2500	2800	3000	3500
2200	3603	3675	5803	5851	5923
2500	6019	6065	6122	6125	6209
2700	6180	6226	6271	6305	6377
3000	6401	6455	6509	6545	6624
3200	6432	6485	6545	6581	6665
3400	6569	6629	6677	6711	6797
3600	6785	6845	6905	6942	7050

Prices in bold refer to doors with heavy system,
door leaf 80mm thickness

Options:

- door leaf thickness 80 mm - surcharge of 30 EUR/m²
- window, size 400 mm x 600 mm - surcharge of 105 EUR
- lock with patent insert with possibility of opening from the inside - surcharge of 720 EUR
- door made in colour other than RAL 9010 - surcharge of 60 EUR/m²
- handle support (lever) for light-weight door - surcharge of 160 EUR (in heavy-weight door this option is included free of charge)

PREMIUM SLIDING DOOR - POLYESTER - FERMOD ACCESSORIES - DPK-LF 100 T>-25°C (FREEZER)

Characteristic:

- Door leaf thickness 100 mm, produced on the press, by high pressure injection of PUR foam into door framework
- Door finish - galvanized steel sheet coated with polyester paint in white colour RAL 9010
- Door leaf core - polyurethane foam, density of minimum 40 kg/m³
- Frame - complex and profiled, made of steel sheet coated with polyester paint in RAL 9010
- Accessories - delivered by FERMOD, made of aluminium
- Lower element - channel section made of stainless, acid-proof steel sheet, type 1.4301

DPK-LF 100 SINGLE LEAF								
S \ H	1800	1900	2000	2100	2200	2300	2400	2500
800	1629	1642	1656	1670	1684	1697	1711	1725
900	1672	1687	1701	1716	1731	1745	1760	1775
1000	1715	1731	1746	1762	1778	1794	1809	1825
1100	1736	1752	1769	1785	1802	1818	1835	1851
1200	1757	1774	1791	1808	1826	1843	1860	1877
1300	1891	1911	1931	1952	1972	1992	2013	2033
1400	1994	2017	2040	2063	2086	2109	2133	2156
1500	2024	2047	2070	2093	2116	2139	2163	2186
1600	2054	2078	2101	2124	2147	2170	2193	2216
1700	2085	2108	2131	2154	2177	2200	2223	2246
1800	2174	2197	2220	2243	2267	2290	2313	2337
1900	2226	2251	2277	2302	2328	2354	2379	2405
2000	2278	2297	2317	2356	2395	2434	2473	2616

S \ H	2500	2600	2700	2800	3000
1500	2155	2165	2175	2185	2235
1600	2191	2192	2194	2221	2249
1700	2246	2282	2319	2325	2896
1800	2337	2369	2401	2939	2950
1900	2405	2884	2919	2953	2987
2000	2616	2998	3034	3071	3107
2200	3072	3111	3150	3189	3228
2400	3351	3394	3438	3481	3525

Prices in bold refer to doors with heavy system

Options:

- door leaf thickness 120 mm - surcharge of 30 EUR/m²
- door leaf thickness 150 mm - surcharge of 60 EUR/m²
- window, size 400 mm x 600 mm - surcharge of 105 EUR
- lock with patent insert with possibility of opening from the inside - surcharge of 160 EUR
- door made in colour other than RAL 9010 - surcharge of 60 EUR/m²
- handle support (lever) for light-weight door - surcharge of 160 EUR (in heavy-weight door this option is included free of charge)

PREMIUM SLIDING DOOR - POLYESTER - FERMOD ACCESSORIES - DPK-LF 100 T>-25°C (FREEZER)

Characteristic:

- Door leaf thickness 100 mm, produced on the press, by high pressure injection of PUR foam into door framework
- Door finish - galvanized steel sheet coated with polyester paint in white colour RAL 9010
- Door leaf core - polyurethane foam, density of minimum 40 kg/m³
- Frame - complex and profiled, made of steel sheet coated with polyester paint in RAL 9010
- Accessories - delivered by FERMOD, made of aluminium
- Lower element - channel section made of stainless, acid-proof steel sheet, type 1.4301

DPK-LF 100 DOUBLE LEAF								
S \ H	1800	1900	2000	2100	2200	2300	2400	2500
1000	3235	3243	3255	3271	3303			
1100	3267	3255	3267	3291	3327			
1200	3351	3363	3370	3379	3387	3399		
1300	3367	3375	3387	3394	3401	3411		
1400	3435	3447	3454	3464	3483	3495	3514	3555
1500	3489	3499	3507	3519	3531	3538	3550	3569
1600	3586	3599	3608	3617	3627	3639	3648	3658
1700	3686	3699	3711	3723	3735	3747	3759	3771
1800	3699	3711	3735	3747	3766	3778	3790	3807
1900	3783	3795	3807	3819	3831	3843	3855	3867
2000	3819	3836	3850	3862	3874	3884	3903	3939

S \ H	2200	2500	2800	3000	3500
2200	3963	4035	6163	6211	6300
2500	6379	6425	6483	6485	6569
2700	6540	6586	6632	6665	6737
3000	6761	6815	6869	6905	6985
3200	6793	6845	6905	6942	7026
3400	6929	6990	7038	7071	7158
3600	7146	7206	7266	7302	7410

Prices in bold refer to doors with heavy system

Options:

- door leaf thickness 120 mm - surcharge of 30 EUR/m²
- window, size 400 mm x 600 mm - surcharge of 105 EUR
- lock with patent insert with possibility of opening from the inside - surcharge of 720 EUR
- door made in colour other than RAL 9010 - surcharge of 60 EUR/m²
- handle support (lever) for light-weight door - surcharge of 160 EUR (in heavy-weight door this option is included free of charge)

PREMIUM SLIDING DOOR - STAINLESS - FERMOD ACCESSORIES - DPK-NF 60 T>0 °C (COLDROOM)

Characteristic:

- **Door leaf thickness** 60 mm, produced on the press, by high pressure injection of PUR foam into door framework
- **Door finish** - stainless, acid-proof steel, type 1.4301, mat surface 2B or grinded surface 4N (option)
- **Door leaf core** - polyurethane foam, density of minimum 40 kg/m³
- **Frame** - complex and profiled, made of stainless, acid-proof steel, type 1.4301, mat surface 2B or grinded surface 4N (option)
- **Accessories** - delivered by FERMOD, made of aluminium
- **Lower element** - channel section made of stainless, acid-proof steel sheet, type 1.4301

DPK-NF 60 SINGLE LEAF								
S \ H	1800	1900	2000	2100	2200	2300	2400	2500
800	1600	1618	1636	1654	1673	1691	1709	1728
900	1631	1651	1670	1690	1710	1729	1749	1769
1000	1662	1694	1726	1743	1760	1776	1793	1809
1100	1725	1748	1770	1792	1815	1837	1860	1882
1200	1788	1812	1836	1860	1884	1907	1931	1955
1300	1842	1867	1892	1917	1942	1967	1993	2018
1400	1895	1922	1948	1975	2001	2028	2054	2081
1500	1956	1984	2012	2040	2067	2095	2123	2151
1600	2017	2040	2064	2088	2111	2152	2192	2222
1700	2148	2179	2209	2240	2271	2301	2332	2363
1800	2279	2311	2343	2375	2407	2439	2471	2503
1900	2337	2371	2404	2438	2471	2504	2538	2571
2000	2396	2436	2477	2517	2558	2599	2639	2781

S \ H	2500	2600	2700	2800	3000
1500	2151	2167	2244	2322	2400
1600	2222	2274	2327	2380	2433
1700	2363	2432	2500	2534	2903
1800	2503	2535	2568	2929	2955
1900	2571	2983	3034	3071	3111
2000	2781	3094	3159	3213	3268
2200	3127	3157	3284	3317	3476
2400	3523	3643	3763	3778	3793

Prices in bold refer to doors with heavy system, door leaf 80mm thickness

Options:

- door leaf thickness 80 mm - surcharge of 30 EUR/m²
- window, size 400 mm x 600 mm - surcharge of 105 EUR
- lock with patent insert with possibility of opening from the inside - surcharge of 200 EUR
- handle support (lever) for light-weight door - surcharge of 160 EUR (in heavy-weight door this option is included free of charge)

PREMIUM SLIDING DOOR - STAINLESS - FERMOD ACCESSORIES - DPK-NF 60 T>0 °C (COLDROOM)

Characteristic:

- **Door leaf thickness** 60 mm, produced on the press, by high pressure injection of PUR foam into door framework
- **Door finish** - stainless, acid-proof steel, type 1.4301, mat surface 2B or grinded surface 4N (option)
- **Door leaf core** - polyurethane foam, density of minimum 40 kg/m³
- **Frame** - complex and profiled, made of stainless, acid-proof steel, type 1.4301, mat surface 2B or grinded surface 4N (option)
- **Accessories** - delivered by FERMOD, made of aluminium
- **Lower element** - channel section made of stainless, acid-proof steel sheet, type 1.4301

DPK-NF 60 DOUBLE LEAF								
S \ H	1800	1900	2000	2100	2200	2300	2400	2500
1000	3030	3046	3060	3082	3093			
1100	3058	3070	3082	3105	3117			
1200	3164	3176	3199	3211	3227	3246		
1300	3180	3199	3223	3235	3251	3282		
1400	3265	3293	3305	3322	3340	3359	3376	3411
1500	3293	3305	3324	3345	3364	3387	3411	3453
1600	3406	3427	3449	3467	3489	3510	3529	3552
1700	3430	3449	3470	3493	3517	3536	3564	3576
1800	3470	3500	3522	3545	3585	3606	3653	3674
1900	3611	3634	3658	3681	3705	3729	3752	3776
2000	3632	3658	3681	3705	3729	3759	3783	3834

S \ H	2200	2500	2800	3000	3500
2200	3811	3884	6093	6140	6210
2500	6269	6351	6443	6500	6634
2700	6316	6410	6504	6563	6716
3000	6434	6533	6634	6704	6869
3200	6481	6587	6693	6763	6940
3400	6716	6822	6940	7010	7187
3600	6928	7045	7163	7234	7422

Prices in bold refer to doors with heavy system, door leaf 80mm thickness

Options:

- door leaf thickness 80 mm - surcharge of 30 EUR/m²
- window, size 400 mm x 600 mm - surcharge of 105 EUR
- lock with patent insert with possibility of opening from the inside - surcharge of 720 EUR
- handle support (lever) for light-weight door - surcharge of 160 EUR (in heavy-weight door this option is included free of charge)

PREMIUM SLIDING DOOR - STAINLESS - FERMOD ACCESSORIES - DPK-NF 100 T>-25 °C (FREEZER)

Characteristic:

- Door leaf thickness 100 mm, produced on the press, by high pressure injection of PUR foam into door framework
- Door finish - stainless, acid-proof steel, type 1.4301, mat surface 2B or grinded surface 4N (option)
- Door leaf core - polyurethane foam, density of minimum 40 kg/m³
- Heated frame - complex and profiled, made of stainless, acid-proof steel, type 1.4301, mat surface 2B or grinded surface 4N (option)
- Accessories - delivered by FERMOD, made of aluminium
- Lower element - channel section made of stainless, acid-proof steel sheet, type 1.4301

DPK-NF 100 SINGLE LEAF								
S \ H	1800	1900	2000	2100	2200	2300	2400	2500
800	1872	1897	1921	1945	1969	1994	2018	2042
900	1930	1956	1982	2008	2033	2059	2085	2111
1000	1988	2016	2043	2070	2098	2125	2152	2180
1100	2028	2057	2086	2115	2144	2172	2201	2230
1200	2068	2098	2129	2159	2190	2221	2251	2281
1300	2166	2200	2233	2266	2300	2333	2366	2400
1400	2265	2301	2337	2374	2410	2446	2482	2518
1500	2294	2329	2364	2399	2434	2469	2504	2539
1600	2322	2359	2396	2433	2469	2506	2543	2580
1700	2434	2472	2511	2549	2587	2625	2664	2702
1800	2546	2586	2625	2665	2705	2745	2785	2825
1900	2612	2654	2695	2737	2778	2820	2861	2903
2000	2679	2730	2780	2830	2880	2930	2980	3121

S \ H	2500	2600	2700	2800	3000
1500	2539	2564	2641	2717	2794
1600	2580	2662	2729	2746	2763
1700	2702	2761	2816	2860	3495
1800	2825	2860	2904	3462	3509
1900	2903	3373	3427	3482	3536
2000	3121	3523	3581	3639	3697
2200	3611	3673	3735	3797	3858
2400	3955	4024	4093	4162	4231

Prices in bold refer to doors with heavy system

Options:

- door leaf thickness 120 mm - surcharge of 30 EUR/m²
- door leaf thickness 150 mm - surcharge of 60 EUR/m²
- window, size 400 mm x 600 mm - surcharge of 105 EUR
- lock with patent insert with possibility of opening from the inside - surcharge of 200 EUR
- handle support (lever) for light-weight door - surcharge of 160 EUR (in heavy-weight door this option is included free of charge)

PREMIUM SLIDING DOOR - STAINLESS - FERMOD ACCESSORIES - DPK-NF 100 T>-25 °C (FREEZER)

Characteristic:

- Door leaf thickness 100 mm, produced on the press, by high pressure injection of PUR foam into door framework
- Door finish - stainless, acid-proof steel, type 1.4301, mat surface 2B or grinded surface 4N (option)
- Door leaf core - polyurethane foam, density of minimum 40 kg/m³
- Heated frame - complex and profiled, made of stainless, acid-proof steel, type 1.4301, mat surface 2B or grinded surface 4N (option)
- Accessories - delivered by FERMOD, made of aluminium
- Lower element - channel section made of stainless, acid-proof steel sheet, type 1.4301

DPK-NF 100 DOUBLE LEAF								
S \ H	1800	1900	2000	2100	2200	2300	2400	2500
1000	3578	3595	3610	3633	3645			
1100	3608	3620	3633	3658	3670			
1200	3720	3732	3757	3769	3787	3807		
1300	3737	3757	3782	3794	3812	3844		
1400	3827	3857	3869	3886	3906	3926	3944	3981
1500	3857	3869	3889	3911	3931	3956	3981	4026
1600	3976	3998	4021	4041	4063	4085	4105	4130
1700	4001	4021	4043	4068	4093	4113	4143	4155
1800	4043	4076	4098	4123	4165	4187	4237	4260
1900	4193	4217	4242	4267	4292	4317	4342	4367
2000	4215	4242	4267	4292	4317	4349	4374	4429

S \ H	2200	2500	2800	3000	3500
2200	4404	4481	6817	6867	6942
2500	7004	7091	7188	7248	7390
2700	7054	7153	7253	7315	7477
3000	7178	7283	7390	7464	7638
3200	7228	7340	7452	7526	7713
3400	7477	7589	7713	7788	7974
3600	7701	7825	7949	8024	8223

Prices in bold refer to doors with heavy system

Options:

- door leaf thickness 120 mm - surcharge of 30 EUR/m²
- window, size 400 mm x 600 mm - surcharge of 105 EUR
- lock with patent insert with possibility of opening from the inside - surcharge of 720 EUR
- handle support (lever) for light-weight door - surcharge of 160 EUR (in heavy-weight door this option is included free of charge)



GAS-TIGHT SLIDING DOORS, “DPG” TYPE

APPLICATION

DPG doors are applied in rooms with controlled atmosphere (KA), which is the best technology to store fruits and vegetables. In standard coldrooms fruits are stored in normal atmosphere containing 21% of oxygen and 0% carbon dioxide. In controlled atmosphere the content of oxygen is below 3% and the content of carbon dioxide is below 5%. This leads to prolongation of fruits and vegetables store period without losing their quality.

DPG - lightweight, up to 120 kg

DPG - heavyweight, up to 400 kg

DOOR LEAF

DP doors are available in 2 versions: In DSPG (STANDARD) version door leaf is made of sandwich panel with PIR core and framed by steel channel section. In DPKG (PREMIUM) version door leaf is produced on the press, by high pressure injection of PUR foam into door framework. The density of PUR core is not less than 40 kg/m³.

Available thicknesses:

- 80 mm

STANDARD door leaf finish (sandwich panel):

- Galvanized steel sheet (L) thickness 0,5 mm, coated with polyester paint in white colour RAL 9010

PREMIUM door leaf finish:

- Stainless, acid-proof steel (N), type 1.4301, thickness 0,8 mm, mat surface 2B
- Galvanized steel sheet (L) thickness 0,75 mm, coated with polyester paint in white colour RAL 9010

Door leaf is equipped with gasket delivered by FERMOD (F), eccentric ball valves one for gas filling of the room, the other in order to take samples from the room atmosphere clamps to ensure door leaf tightness, revision window 528 x 828 mm, closed with a key.

FRAME TYPE

In both DSPG and DPKG version door frame is filled with PUR foam. It is made of stainless, acid-proof steel (N), type 1.4301, thickness 0,8 mm, mat surface 2B or galvanized steel sheet (T) thickness 0,75 mm, coated with polyester paint in white colour (RAL 9010).

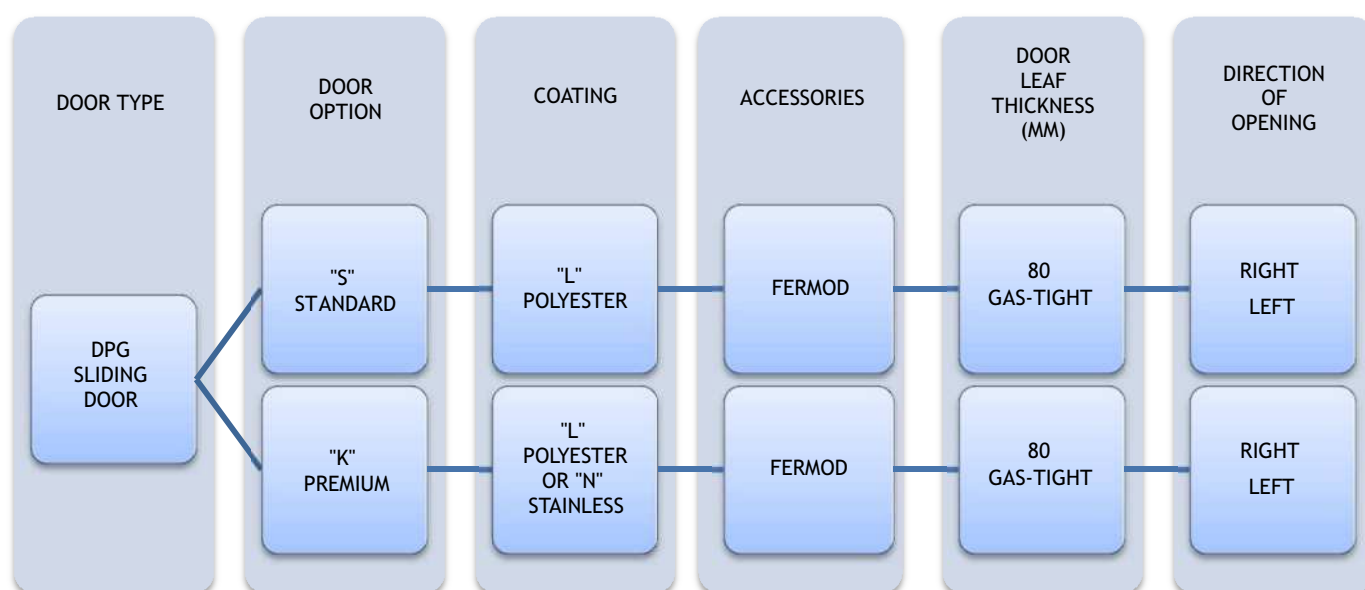
Lock is delivered by RAHRBACH. It is equipped with patent insert with possibility of emergency opening from the inside even if the door is locked.

ACCESSORIES

- FERMOD accessories (F), aluminium rail - lightweight type
- FERMOD accessories (F), galvanized steel or stainless steel rail - heavyweight type
- FERMOD accessories (F), stainless steel rail - lightweight type (option)
- FERMOD accessories (F), stainless steel rail - heavyweight type (option)

OPTIONS

- Untypical door leaf finish:
 - Stainless, acid-proof steel (N), type 1.4301, thickness 0,8 mm, grinded surface 4B or grained surface
 - Galvanized steel sheet (L) coated with polyester paint other than white (RAL 9010)
- Availability to produce door with and without a threshold (lower element is installed in the floor)
- Flashing of the door opening



Enquiry/order example:



DPKG-NF 80 - Premium gas-tight coldroom sliding door, stainless steel finish, FERMOD accessories, door leaf thickness 80 mm, direction of opening to the right.

STANDARD SLIDING DOOR - POLYESTER - FERMOD ACCESSORIES - DPSG-LF 80 T>0 °C (GAS-TIGHT)

Characteristic:

- Door leaf made of sandwich panel with PIR core 80 mm
- Door finish - galvanized steel sheet coated with polyester paint in white colour RAL 9010
- Door leaf framing - steel channel section, made of stainless, acid-proof steel sheet, type 1.4301
- Frame - complex and profiled, made of steel sheet coated with polyester paint in RAL 9010
- Accessories - delivered by FERMOD, made of aluminium
- Lower element - channel section made of stainless, acid-proof steel sheet, type 1.4301
- Eccentric ball valves - one for gas filling of the room, the other in order to take samples from the room atmosphere
- clamps - ensure door leaf tightness
- revision window - dimension of 528 x 828 mm

DPSG-LF 80 SINGLE LEAF								
S \ H	1800	1900	2000	2100	2200	2300	2400	2500
800	2186	2195	2204	2212	2221	2230	2239	2248
900	2203	2213	2222	2232	2242	2251	2261	2270
1000	2220	2230	2241	2251	2261	2272	2282	2293
1100	2345	2356	2367	2378	2390	2401	2412	2423
1200	2406	2418	2430	2442	2455	2467	2479	2491
1300	2441	2454	2467	2480	2493	2507	2519	2533
1400	2476	2490	2504	2518	2532	2546	2560	2574
1500	2513	2527	2542	2557	2572	2586	2601	2616
1600	2549	2565	2581	2596	2611	2627	2643	2658
1700	2653	2669	2685	2701	2717	2733	2749	2766
1800	2670	2687	2704	2720	2737	2754	2771	2788
1900	2713	2731	2749	2766	2780	2793	2807	2821
2000	2756	2775	2793	2812	2830	2849	2867	2886

S \ H	2500	2600	2700	2800	3000	3200	3400	3600	3800	4000
1500	2561	2594	2613	2633	2652	2786	2817	2847	2879	2909
1600	2602	2688	2708	2728	2749	2888	2920	2952	2984	3016
1700	2766	2781	2803	2824	2846	2990	3023	3056	3090	3123
1800	2788	2805	2828	2850	2872	3019	3054	3089	3124	3159
1900	2821	2828	2852	2875	2899	3048	3085	3122	3158	3195
2000	2886	2904	2929	2954	2980	3134	3172	3211	3249	3287
2200	2932	2958	2982	3008	3033	3192	3234	3276	3318	3728
2400	3031	3066	3100	3134	3168	3327	3362	3397	3834	3882
2600	3202	3232	3262	3293	3323	3405	3486	3943	3990	4037
2800	3371	3407	3443	3479	3516	3552	3956	4016	4077	4137
3000	3454	3489	3523	3558	3593	4025	4078	4132	4185	4238

Prices in bold refer to doors with heavy system

Options:

- lock with patent insert with possibility of opening from the inside - surcharge of 200 EUR
- handle support (lever) for light-weight door - surcharge of 190 EUR (in heavy-weight door this option is included free of charge)

PREMIUM SLIDING DOOR - POLYESTER - FERMOD ACCESSORIES - DPKG-LF 80 T>0 °C (GAS-TIGHT)

Characteristic:

- Door leaf thickness 80 mm, produced on the press, by high pressure injection of PUR foam into door framework
- Door finish - galvanized steel sheet coated with polyester paint in white colour RAL 9010
- Door leaf core - polyurethane foam, density of minimum 40 kg/m³
- Frame - complex and profiled, made of steel sheet coated with polyester paint in RAL 9010
- Accessories - delivered by FERMOD, made of aluminium
- Lower element - channel section made of stainless, acid-proof steel sheet, type 1.4301
- Eccentric ball valves - one for gas filling of the room, the other in order to take samples from the room atmosphere
- clamps - ensure door leaf tightness
- revision window - dimension of 528 x 828 mm

DPKG-LF 80 SINGLE LEAF								
S \ H	1800	1900	2000	2100	2200	2300	2400	2500
800	2401	2410	2419	2428	2437	2447	2456	2465
900	2419	2429	2439	2448	2458	2468	2478	2488
1000	2437	2447	2458	2469	2479	2490	2500	2511
1100	2491	2503	2514	2526	2538	2550	2561	2573
1200	2593	2606	2619	2632	2645	2658	2671	2684
1300	2632	2645	2658	2672	2685	2699	2712	2726
1400	2670	2682	2696	2708	2722	2737	2752	2767
1500	2707	2723	2740	2756	2772	2789	2805	2822
1600	2744	2727	2775	2791	2806	2833	2861	2876
1700	2877	2896	2914	2931	2949	2967	2985	3003
1800	3011	3028	3045	3062	3079	3096	3114	3131
1900	3057	3075	3093	3111	3129	3146	3164	3182
2000	3103	3125	3147	3168	3190	3212	3234	3380

S \ H	2500	2600	2700	2800	3000
1500	2822	2838	2890	2943	2995
1600	2876	2924	2956	2989	3021
1700	3003	3115	3154	3220	3592
1800	3131	3208	3286	3636	3629
1900	3182	3564	3624	3619	3651
2000	3380	3594	3647	3688	3729
2200	3614	3660	3705	3756	3807
2400	3783	3855	3927	3935	3942

Prices in bold refer to doors with heavy system

Options:

- lock with patent insert with possibility of opening from the inside - surcharge of 200 EUR
- door made in colour other than RAL 9010 - surcharge of 60 EUR/m²
- handle support (lever) for light-weight door - surcharge of 190 EUR (in heavy-weight door this option is included free of charge)

PREMIUM SLIDING DOOR - STAINLESS - FERMOD ACCESSORIES - DPKG-NF 80 T>0 °C (GAS-TIGHT)

Characteristic:

- Door leaf thickness 80 mm, produced on the press, by high pressure injection of PUR foam into door framework
- Door finish -stainless, acid-proof steel, type 1.4301, mat surface 2B or grinded surface 4N (option)
- Door leaf core - polyurethane foam, density of minimum 40 kg/m³
- Heated frame - complex and profiled, made of stainless, acid-proof steel, type 1.4301, mat surface 2B or grinded surface 4N (option)
- Accessories - delivered by FERMOD, made of aluminium
- Lower element - channel section made of stainless, acid-proof steel sheet, type 1.4301
- Eccentric ball valves - one for gas filling of the room, the other in order to take samples from the room atmosphere
- clamps - ensure door leaf tightness
- revision window - dimension of 528 x 828 mm

DPKG-NF 80 SINGLE LEAF								
S \ H	1800	1900	2000	2100	2200	2300	2400	2500
800	2718	2738	2757	2776	2796	2815	2834	2854
900	2751	2772	2793	2814	2835	2855	2876	2897
1000	2784	2819	2853	2871	2888	2905	2923	2940
1100	2851	2875	2899	2922	2946	2970	2993	3017
1200	2918	2943	2968	2993	3019	3044	3069	3094
1300	2974	3001	3027	3054	3081	3107	3134	3160
1400	3031	3059	3087	3115	3143	3171	3199	3227
1500	3095	3124	3154	3183	3213	3242	3272	3301
1600	3159	3185	3210	3234	3259	3302	3345	3376
1700	3298	3330	3363	3395	3427	3460	3492	3525
1800	3436	3470	3504	3538	3572	3606	3640	3673
1900	3498	3533	3569	3604	3639	3675	3710	3745
2000	3560	3602	3645	3688	3731	3774	3817	3966

S \ H	2500	2600	2700	2800	3000
1500	3301	3352	3424	3496	3568
1600	3376	3432	3487	3543	3599
1700	3525	3598	3670	3706	4137
1800	3673	3707	3741	4165	4193
1900	3745	4223	4278	4318	4379
2000	3966	4343	4413	4471	4530
2200	4379	4410	4548	4584	4755
2400	4616	4738	4861	4653	4892

Prices in bold refer to doors with heavy system

Options:

- lock with patent insert with possibility of opening from the inside - surcharge of 200 EUR
- handle support (lever) for light-weight door - surcharge of 190 EUR (in heavy-weight door this option is included free of charge)

UNIVERSAL HINGED DOORS, “DRU” TYPE



APPLICATION

DRU are multifunctional hinged doors which can be applied in different conditions and locations, such as industrial objects, production facilities store houses, etc. The structure of the door ensures its strength and durability. High insulation value has been achieved thanks to polyurethane foam core (PUR).

DOOR LEAF

Door leaf is produced on the press, by high pressure injection of PUR foam into door framework. The density of PUR core is not less than 40 kg/m³.

Available thickness

- 50mm - single or double-leaf

Door leaf finish

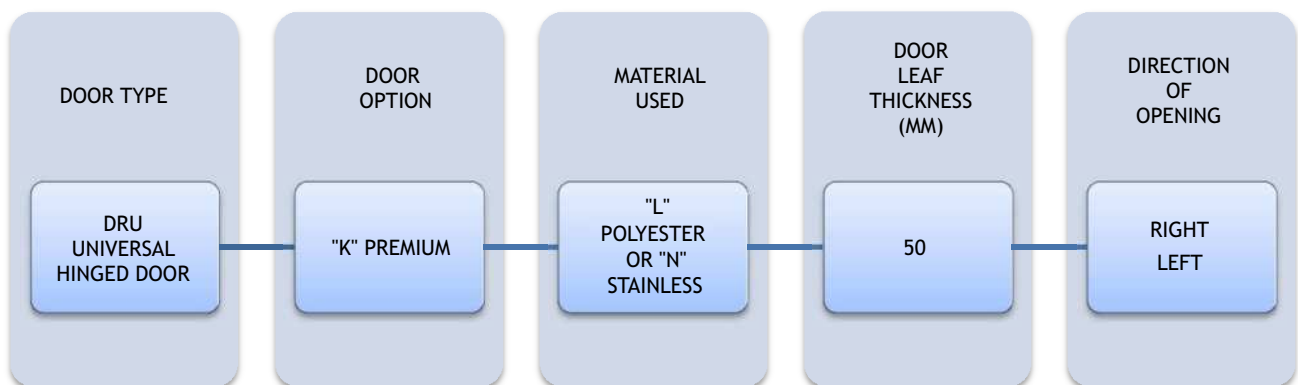
- stainless, stainless, acid-proof steel (N), type 1.4301, thickness 0,8 mm, mat surface 2B
- galvanized steel sheet 0,75 mm coated with polyester paint in white colour RAL 9010

ACCESSORIES

- lock with patent insert
- handle or knob made of stainless, acid-proof steel, type 1.4301
- hinges made of stainless, acid-proof steel, type 1.4301
- bolt in double-leaf door

OPTIONS

- Untypical door leaf finish:
 - Stainless, acid-proof steel (N), type 1.4301, thickness 0,8 mm, grinded surface 4B or grained surface
 - Galvanized steel sheet (T) thickness 0,75 mm, coated with polyester paint other than white
 - Polyester laminate PECOLIT in RAL 9016 with stainless, acid-proof door leaf framing (N), type 1.4301
- Availability to produce door with and without a threshold (lower element is installed in the floor)
- Door pump
- Electric hook
- Door windows:
 - Round window ø280 mm
 - Window in a different shape (special enquiry)
 - Execution of opening for a individual glazing
- Ventilation bar:
 - Dimension 455 x 135 mm
 - Other dimension and shape - individual enquiry
- Flashing of the door opening



Enquiry/order example:



DRU-L - Universal hinged door, polyester paint finish, door leaf thickness 50 mm, direction of opening to the right.

UNIVERSAL HINGED DOORS, STAINLESS DRU-N T>0 °C

Characteristic:

- **Door leaf** thickness 50 mm, produced on the press, by high pressure injection of PUR foam into door framework
- **Door finish** - stainless, acid-proof steel, type 1.4301, mat surface 2B or grinded surface 4N (option)
- **Door leaf core** - polyurethane foam, density of minimum 40 kg/m³
- **Door closing** - lock with patent insert + stainless, acid-proof handle
- **Hinges** - stainless, acid-proof, type 1.4301
- **Frame** - complex and profiled, made of stainless, acid-proof steel, type 1.4301, mat surface 2B or grinded surface 4N (option)

DRU-N 50 SINGLE LEAF			
S \ H	2000	2100	2200
800	806	827	848
900	860	881	901
1000	894	914	933
1100	923	977	1031
1200	1003	1021	1090
1300	1036	1057	1106
1400	1068	1094	1123
1500	1101	1131	1131

DRU-N 50 DOUBLE LEAF							
S \ H	2000	2100	2200	2300	2400	2500	2600
1200	1289	1334	1378	1406	1434	1462	1491
1300	1322	1368	1414	1444	1473	1503	1532
1400	1356	1403	1450	1481	1512	1543	1574
1500	1389	1438	1487	1519	1551	1584	1616
1600	1422	1472	1523	1556	1590	1624	1658
1700	1456	1508	1559	1594	1629	1665	1700
1800	1489	1542	1595	1632	1668	1705	1742
1900	1579	1624	1669	1707	1745	1783	1821
2000	1670	1706	1743	1783	1822	1862	1901
2100	1703	1746	1789	1830	1870	1911	1965
2200	1737	1786	1834	1876	1918	1961	2030
2300	1771	1825	1879	1923	1967	2010	2072
2400	1805	1865	1925	1970	2015	2060	2114
2500	1839	1905	1970	2016	2063	2109	2156

Grained door surface - surcharge of 16%

Options:

- window, size 400 mm x 600 mm - surcharge of 105 EUR
- ventilation bar - surcharge of 60 EUR

UNIVERSAL HINGEND DOORS, POLYESTER DRU-L T>0 °C

Characteristic:

- **Door leaf** thickness 50 mm, produced on the press, by high pressure injection of PUR foam into door framework
- **Door finish** - galvanized steel sheet coated with polyester paint in white colour RAL 9010
- **Door leaf core** - polyurethane foam, density of minimum 40 kg/m³
- **Door closing** - lock with patent insert + stainless, acid-proof handle
- **Hinges** - stainless, acid-proof, type 1.4301
- **Frame** - complex and profiled, made of stainless, acid-proof steel, type 1.4301, mat surface 2B or grinded surface 4N (option)

DRU-L 50 SINGLE LEAF			
S \ H	2000	2100	2200
800	627	637	648
900	628	638	648
1000	646	673	700
1100	677	720	763
1200	756	767	810
1300	774	787	827
1400	783	796	833
1500	801	816	841

DRU-L 50 DOUBLE LEAF								
S \ H	2000	2100	2200	2300	2400	2500	2600	
1200	1051	1066	1081	1095	1110	1143	1175	
1300	1069	1084	1100	1115	1131	1164	1197	
1400	1087	1103	1119	1135	1151	1186	1220	
1500	1104	1121	1138	1155	1172	1207	1242	
1600	1122	1140	1157	1175	1193	1229	1264	
1700	1140	1158	1177	1195	1214	1250	1286	
1800	1157	1177	1196	1215	1235	1272	1308	
1900	1216	1245	1274	1283	1293	1332	1371	
2000	1232	1270	1309	1309	1310	1350	1392	
2100	1294	1313	1375	1380	1386	1425	1479	
2200	1321	1349	1405	1415	1426	1461	1527	
2300	1348	1384	1435	1450	1466	1497	1549	
2400	1376	1420	1465	1485	1505	1534	1572	
2500	1403	1449	1495	1520	1545	1570	1595	

Options:

- door made in colour other than RAL 9010 - surcharge of 60 EUR/m²
- window, size 400 mm x 600 mm - surcharge of 105 EUR
- ventilation bar - surcharge of 60 EUR

SWING DOORS, “DW” TYPE



APPLICATION

DW doors are great solution for industrial gateways with high number of passages (production facilities, supermarkets, restaurants, shops, etc.). The structure of the door ensures its strength and durability. High insulation value has been achieved thanks to polyurethane foam core (PUR).

DOOR LEAF

Door leaf is produced on the press, by high pressure injection of PUR foam into door framework. The density of PUR core is not less than 40 kg/m^3 .

DOOR LEAF FINISH

- Stainless, stainless, acid-proof steel (N), type 1.4301, thickness 0,8 mm, mat surface 2B
- Galvanized steel sheet 0,75 mm coated with polyester paint in white colour RAL 9010

Swing doors are equipped with round stainless, acid-proof window, diameter of $\varnothing 280 \text{ mm}$ (standard).

Swing doors can be produced in single or double-leaf option.

FRAME

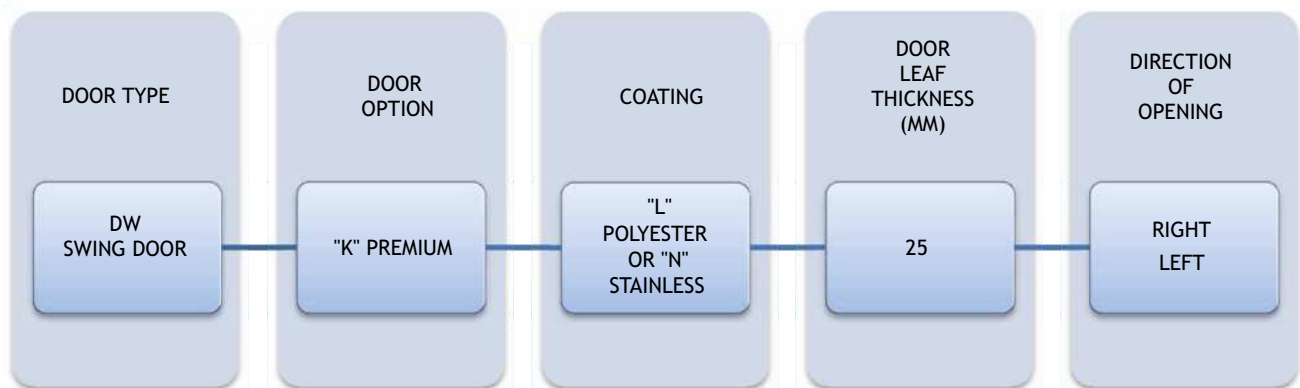
Swing doors DW installed to sandwich panel are equipped in frame in the shape of channel section, in case the DW doors are installed to brick wall are equipped in installation profile. Both channel section and installation profile are made of made of stainless, acid-proof steel, type 1.4301 or galvanized steel sheet coated with polyester paint in white colour RAL 9010.

HINGES

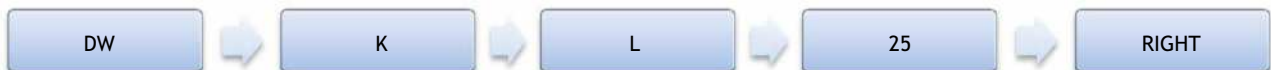
Hinges are delivered by FERMOD and are made of stainless, acid-proof steel or PVC with “STOP” function.

OPTION

- Untypical door leaf finish:
 - Stainless, acid-proof steel (N), type 1.4301, thickness 0,8 mm, grinded surface 4B or grained surface
 - Galvanized steel sheet (T) thickness 0,75 mm, coated with polyester paint other than white
 - Polyester laminate PECOLIT in RAL 9016 with stainless, acid-proof door leaf framing (N), type 1.4301
- Door windows:
 - Window in a different shape (special enquiry)
 - Execution of opening for a individual glazing
- Flashing of the door opening
- Execution in composite material PE 500



Enquiry/order example:



DW-L - swing door, polyester paint finish, door leaf thickness 25 mm, direction of opening to the right.

SWING DOORS, POLYESTER DW-L T>0 °C

Characteristic:

- **Door leaf** thickness 25 mm, produced on the press, by high pressure injection of PUR foam into door framework
- **Door finish** - galvanized steel sheet coated with polyester paint in white colour RAL 9010
- **Door leaf core** - polyurethane foam, density of minimum 40 kg/m³
- **Hinges** - stainless, acid-proof, type 1.4301
- **Window** - round shape, stainless, acid-proof, type 1.4301
- **Buffers** preventing against damages

DW-L SINGLE LEAF						
S \ H	2000	2100	2200	2300	2400	2500
700	857	864	871	878	885	892
800	872	880	887	895	902	910
900	886	895	903	912	920	929
1000	901	910	919			
1100	916	925	935			
1200	930	941	952			
1300	945	956	968			

DW-L DOUBLE LEAF						
S \ H	2000	2100	2200	2300	2400	2500
1200	1409	1421	1433	1445	1457	1470
1300	1433	1446	1459	1472	1485	1498
1400	1457	1471	1485	1498	1512	1526
1500	1482	1496	1510	1525	1539	1553
1600	1506	1521	1536	1551	1566	1581
1700	1530	1546	1561	1577	1593	1609
1800	1554	1570	1587	1604	1621	1637
1900	1578	1595	1613	1630	1647	1665
2000	1602	1620	1638			
2100	1626	1645	1664			
2200	1650	1670	1689			
2300	1674	1695	1715			
2400	1698	1720	1741			
2500	1722	1744	1766			
2600	1746	1769	1792			

Options:

- door made in colour other than RAL 9010 - surcharge of 60 EUR/m²

SWING DOORS, STAINLESS DW-N T>0 °C

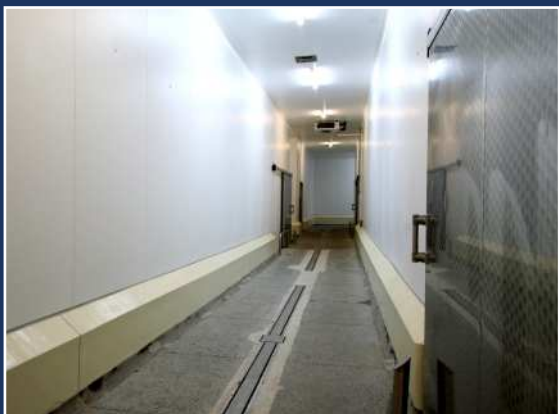
Characteristic:

- **Door leaf** thickness 25 mm, produced on the press, by high pressure injection of PUR foam into door framework
- **Door finish** - stainless, acid-proof steel, type 1.4301, mat surface 2B or grinded surface 4N (option)
- **Door leaf core** - polyurethane foam, density of minimum 40 kg/m³
- **Hinges** - stainless, acid-proof, type 1.4301
- **Window** - round shape, stainless, acid-proof, type 1.4301
- **Buffers** preventing against damages

DW-N SINGLE LEAF						
S \ H	2000	2100	2200	2300	2400	2500
700	992	1007	1022	1037	1052	1068
800	1023	1040	1056	1073	1089	1106
900	1054	1072	1090	1108	1126	1144
1000	1085	1105	1124	/	/	/
1100	1116	1137	1158	/	/	/
1200	1148	1170	1192	/	/	/
1300	1178	1202	1226	/	/	/

DW-N DOUBLE LEAF						
S \ H	2000	2100	2200	2300	2400	2500
1200	1593	1615	1638	1661	1684	1707
1300	1631	1656	1680	1704	1729	1753
1400	1670	1696	1722	1748	1773	1799
1500	1709	1736	1763	1791	1818	1845
1600	1748	1776	1805	1834	1862	1891
1700	1786	1816	1847	1877	1907	1937
1800	1825	1857	1888	1920	1952	1983
1900	1864	1897	1930	1963	1996	2029
2000	1903	1937	1972	/	/	/
2100	1942	1977	2013	/	/	/
2200	1980	2018	2055	/	/	/
2300	2019	2058	2097	/	/	/
2400	2058	2098	2138	/	/	/
2500	2097	2138	2180	/	/	/
2600	2135	2178	2222	/	/	/

www.panelitech.pl



PANELTECH[®]