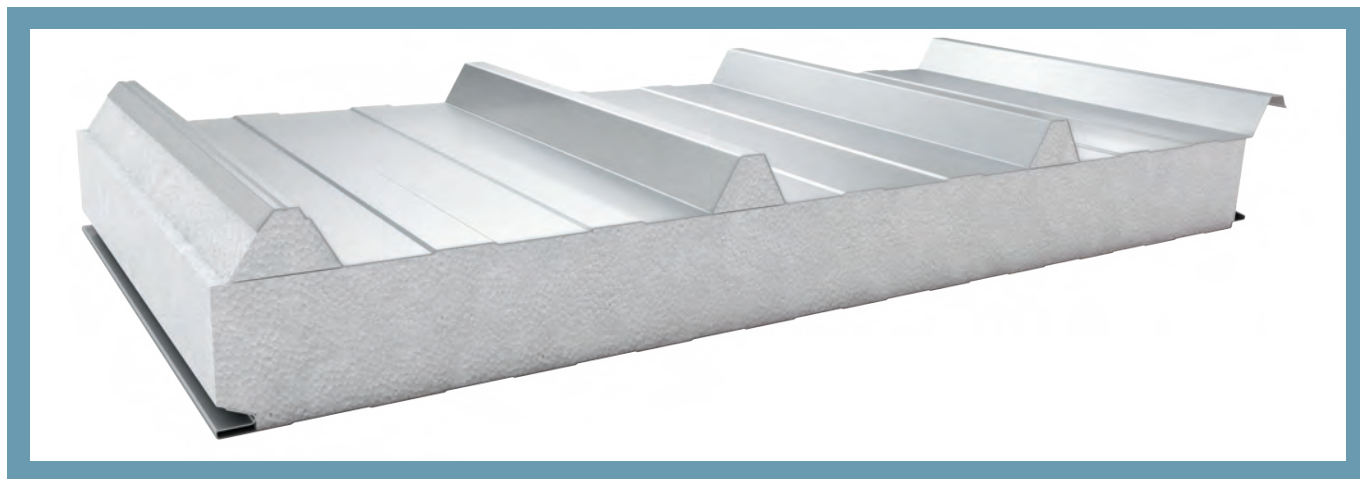


SANDWICH PANEL PWS-D¹⁾



Panels connection scheme

APPLICATION

Roof sandwich panel PWS-D is applied as roofs and roof covers. The core of the panel comprises expanded polystyrene of 12,5 kg/m³ which is produced by our own factory. PWS-D sandwich panels are characterized by superb thermal insulation and low weight.

AVAILABLE PROFILATION TYPES

EXTERNAL PROFILATION

T - TRAPEZOIDAL

INTERNAL PROFILATION

L - LINEAR

R - GROOVE

G - SMOOTH

TABLE OF TECHNICAL PARAMETERS OF THE PWS-D PANELS

Parameter	Value				
thickness [mm]	80	100	120	150	200
modular width [mm]	1050				
length ²⁾ [mm]	2000 ÷ 10000				
weight ³⁾ [kg/m ²]	9,6	9,9	10,2	10,6	11,5
heat transfer coefficient U_c [W/m ² K]	0,45	0,37	0,31	0,25	0,19
resistance to external fire	$B_{roof}(t_1)$				
anti-corrosive protection	external C1, C2, C3 (C4 ÷ C5) ⁴⁾ , internal A1 (A2 ÷ A5) ⁴⁾				
organic coatings	SP 25, PU, AGRO, FOOD SAFE and other ⁴⁾				
external facing	galvanized steel 0,5 ÷ 0,6 mm ⁵⁾				
internal facing	galvanized steel 0,4 ÷ 0,5 mm ⁵⁾				
available profilation types	external facing T; internal facing L, R ⁶⁾ , G ⁶⁾				
insulating core	expanded polystyrene EPS of 12,5 kg/m ³				
application	non-continuous application on roofs and roof covers				

¹⁾ Minimum Production Quantity (MPQ) is from 500m² up to 1000m² and depends on thickness of the panel. In order to verify production possibilities of specific order please contact our Customer Service or Sales Representative.

²⁾ length depends on the color of the external facing and the thickness of the panel

³⁾ average weight of a sandwich panel with 0,5 mm outer facing, including product tolerance

⁴⁾ organic coat selected on the basis of durability and application conditions. Coat selection is carried out through environmental assessment and basing on an environmental questionnaire completed by the Client, approved by the steel manufacturer and Paneltech

⁵⁾ other steel types are selected according to application conditions and approved by Paneltech

⁶⁾ facings with the G - smooth or R - groove profiles can include microwaves, which affect the appearance of the product classified as compliant with the requirements of EN 14509, annex D