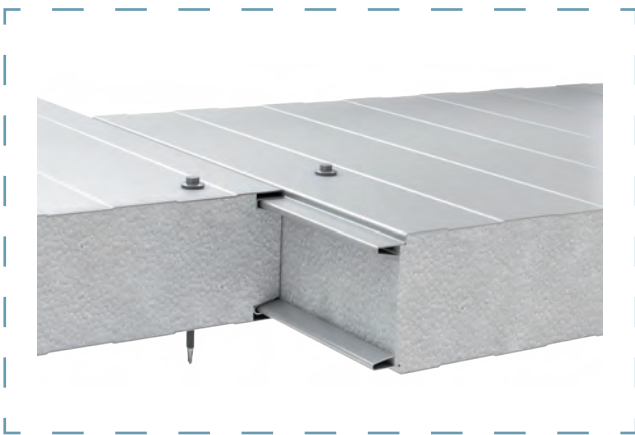
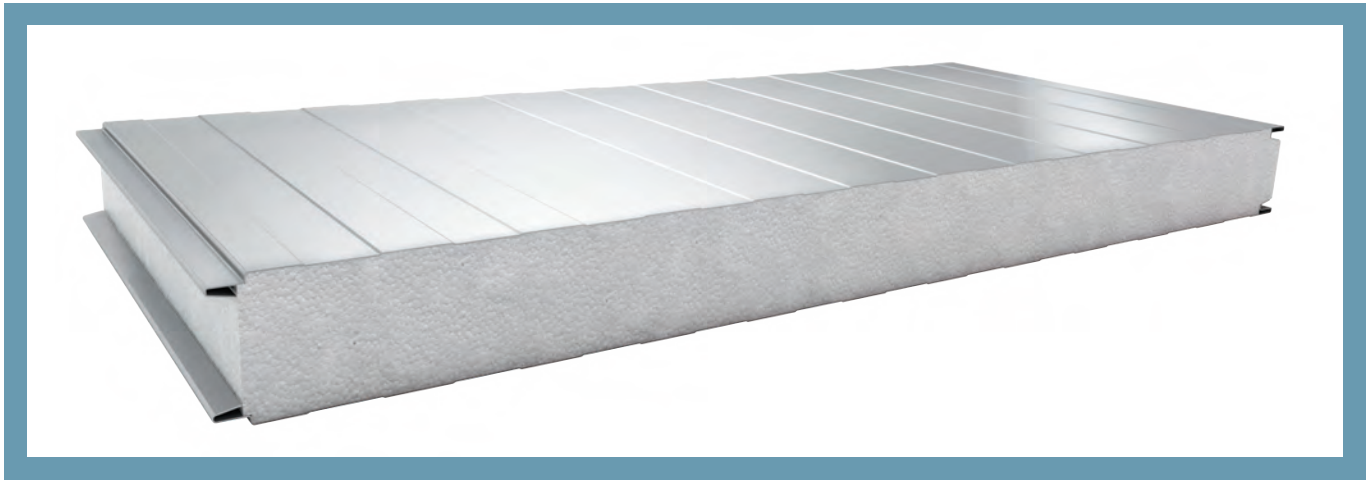


SANDWICH PANEL PWS-S



Panels connection scheme

APPLICATION

Wall sandwich panel with visible joint PWS-S is used to construct external walls and internal partitions in the single- or multiple-span shell structure. The panels can be installed both vertically and horizontally. PWS-S sandwich panels are characterized by superb thermal insulation and low weight. The core of the panel comprises expanded polystyrene of 12,5 kg/m³ which is produced by our own factory. The PWS-S panels are compatible with wall panels with polyisocyanurate core type PWPIR-S and with wall panels with mineral wool core type PWW-S /PWW-S LITE.

AVAILABLE PROFILATION TYPES

EXTERNAL PROFILATION

- L** - LINEAR
- MF** - MICROWAVE
- ML** - MICROLINEAR
- G** - SMOOTH

INTERNAL PROFILATION

- L** - LINEAR
- R** - GROOVE
- G** - SMOOTH

TABLE OF TECHNICAL PARAMETERS OF THE PWS-S PANELS

Parameter	Value					
thickness [mm]	50	80	100	120	150	200
modular width [mm]	1130					
length ¹⁾ [mm]	2000 ÷ 10000					
weight ²⁾ [kg/m ²]	8,8	9,1	9,4	9,6	10,0	10,6
heat transfer coefficient U _c [W/m ² K]	0,77	0,48	0,39	0,32	0,26	0,20
resistance to external fire ³⁾	NRO					
anti-corrosive protection	external C1, C2, C3 (C4 ÷ C5) ⁴⁾ , internal A1 (A2 ÷ A5) ⁴⁾					
organic coatings	SP 25, PU, AGRO, FOOD SAFE and other ⁴⁾					
external facing	galvanized steel 0,5 ÷ 0,6 mm ⁵⁾					
internal facing	galvanized steel 0,4 ÷ 0,5 mm ⁵⁾					
available profilation types	external facing L, ML, MF, G ⁶⁾ ; internal facing L, R ⁶⁾ , G ⁶⁾					
insulating core	expanded polystyrene EPS of 12,5 kg/m ³					
application	non-continuous application on external walls and as wall cladding, on the structural parts of walls and ceilings					
wall application layout	vertical or horizontal					

¹⁾ length depends on the color of the external facing and the thickness of the panel

²⁾ average weight of a sandwich panel with 0,5 mm outer facing, including product tolerance

³⁾ fire rating concerning the propagation of fire by the wall when the fire acts towards the outside. This property applies to the Polish territory only and is not CE-marked

⁴⁾ organic coat selected on the basis of durability and application conditions. Coat selection is carried out through environmental assessment and basing on an environmental questionnaire completed by the Client, approved by the steel manufacturer and Paneltech

⁵⁾ other steel types are selected according to application conditions and approved by Paneltech

⁶⁾ facings with the G - smooth or R - groove profiles can include microwaves, which affect the appearance of the product classified as compliant with the requirements of EN 14509, annex D