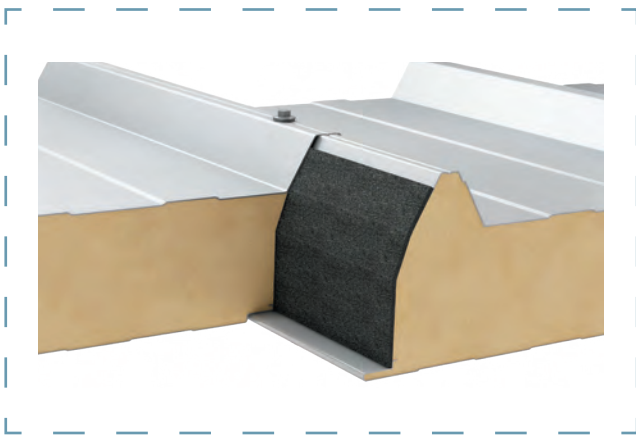
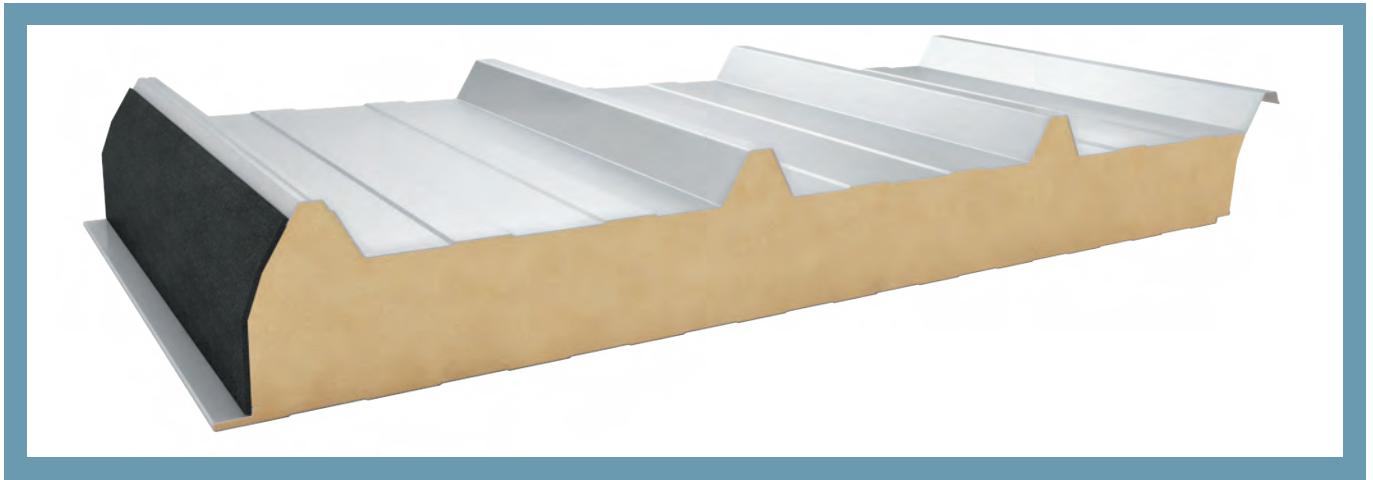


SANDWICH PANEL PWPUR-D / PWPIR-D



Panels connection scheme

APPLICATION

Roof sandwich panel PWPUR-D / PWPIR-D is applied as roofs and roof covers. The panel is characterized by very good thermal insulation properties and strength, as well as very high fire resistance properties (PWPIR-D). The core of the panel comprises polyurethane foam (PUR) or polyisocyanurate foam (PIR) of 40 kg/m³ in total density.

AVAILABLE PROFILATION TYPES

EXTERNAL PROFILATION

T - TRAPEZOIDAL

INTERNAL PROFILATION

L - LINEAR

R - GROOVE

G - SMOOTH

TABLE OF TECHNICAL PARAMETERS OF THE PWPUR-D / PWPIR-D PANELS

Parameter	Value						
thickness [mm]	40	60	80	100	120	145	160
modular width [mm]	1050						
length ¹⁾ [mm]	2000 ÷ 16000						
weight ²⁾ [kg/m ²]	10,2	11,0	11,8	12,6	13,4	14,5	15,0
heat transfer coefficient U_c for PWPUR-D [W/m ² K]	0,50	0,35	0,27	0,22	0,18	0,16	0,14
heat transfer coefficient U_c for PWPIR-D [W/m ² K]	0,49	0,34	0,26	0,21	0,18	0,15	0,14
acoustic insulation R_w [dB]	26						
reaction to fire PUR	NPD						
reaction to fire PIR	B-s1, d0						
resistance to external fire PUR	$B_{roof}(t_1)$						
resistance to external fire PIR	$B_{roof}(t_1)$ and $B_{roof}(t_2)$ and $B_{roof}(t_3)$						
roof fire rating PUR ³⁾	NPD			RE 30 ³⁾			
roof fire rating PIR ³⁾	NPD			REI 30 ³⁾			
anti-corrosive protection	external C1, C2, C3 (C4 ÷ C5) ⁴⁾ , internal A1 (A2 ÷ A5) ⁴⁾						
organic coatings	SP 25, PU, AGRO, FOOD SAFE and other ⁴⁾						
external facing	galvanized steel 0,5 ÷ 0,6 mm ⁵⁾						
internal facing	galvanized steel 0,4 ÷ 0,5 mm ⁵⁾						
available proflation types	external facing T; internal facing L, R ⁶⁾ , G ⁶⁾						
insulating core	rigid foam of 40 kg/m ³ in total density and with enclosed PUR (polyurethane) / PIR (polyisocyanurate) cells						
application	non-continuous application on roofs and roof covers						

¹⁾ length depends on the color of the external facing and the thickness of the panel

²⁾ average weight of a sandwich panel with 0.5 mm outer facing, including product tolerance

³⁾ for more details on the General Sales Conditions, go to www.paneltech.pl

⁴⁾ organic coat selected on the basis of durability and application conditions. Coat selection is carried out through environmental assessment and basing on an environmental questionnaire completed by the Client, approved by the steel manufacturer and Paneltech

⁵⁾ other steel types are selected according to application conditions and approved by Paneltech

⁶⁾ facings with the G - smooth or R - groove profiles can include microwaves, which affect the appearance of the product classified as compliant with the requirements of EN 14509, annex D