

## INDUSTRIAL DOORS

- COLDROOM AND FREEZER DOORS
- GAS-TIGHT SLIDING DOORS
- SWING DOORS
- UNIVERSAL HINGED DOORS





# COLDROOM AND FREEZER HINGED DOOR “DR” TYPE



## APPLICATION

DR type door are applied in coldrooms and freezers within the temperature range from  $-40^{\circ}\text{C}$  to  $+50^{\circ}\text{C}$ . The structure of the door ensures its strength and durability. High insulation value has been achieved thanks to polyurethane foam core (PUR).

## DOOR LEAF

DR doors are produced in 3 versions. In DRE (ECO) and DRS (STANDARD) version door leaf is made of sandwich panel with PIR core and framed by steel channel section. In DRK (PREMIUM) version door leaf is produced on the press, by high pressure injection of PUR foam into door framework. The density of PUR core is not less than  $40 \text{ kg/m}^3$ .

### Available thicknesses:

- 60, 80 mm - coldroom door (single and double leaf)
- 100 mm, 120 mm, 150mm, 160mm - freezer door (single and double leaf)

### ECO and STANDARD door leaf finish (sandwich panel):

- Galvanized steel sheet (L) thickness 0,5 mm, coated with polyester paint in white colour RAL 9010

### PREMIUM door leaf finish:

- Stainless, acid-proof steel (N), type 1.4301, thickness 0,8 mm, mat surface 2B
- Galvanized steel sheet (L) thickness 0,75 mm, coated with polyester paint in white colour RAL 9010

## FRAME TYPE

In DRE and DRS version door frame is filled with PUR foam. It is made of stainless, acid-proof steel (N), type 1.4301, thickness 0,8 mm, mat surface 2B or galvanized steel sheet (L) thickness 0,75 mm, coated with polyester paint in white colour (RAL 9010).

Freezer door frame and threshold are equipped in heating system (heating cable, 230 V, 40 W/rm)

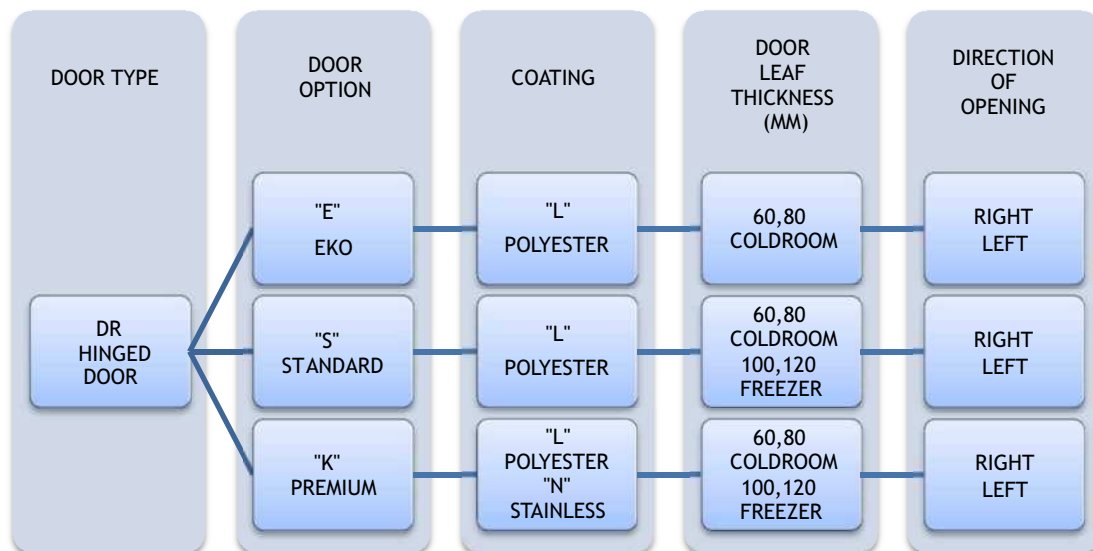
DRE version is equipped in angle bar shaped frame, which is made of galvanized steel sheet (L) thickness 0,75 mm, coated with polyester paint in white colour (RAL 9010).

## HINGES

Hinges are delivered by FERMOD. Thanks to door lifting option during opening and closing the hinges prevent the lower gasket from friction.

## OPTIONS

- Untypical door leaf finish:
  - Stainless, acid-proof steel (N), type 1.4301, thickness 0,8 mm, grinded surface 4B or grained surface
  - Galvanized steel sheet (L) thickness 0,75 mm, coated with polyester paint other than white RAL 9010
  - panel made of polyester resins reinforced with glass fibre in RAL 9016 with stainless, acid-proof door leaf framing (N), type 1.4301
- Availability to produce door with and without a threshold (lower element is installed in the floor):
- Door windows
  - Round window  $\varnothing 280$  mm
  - Window in a different shape and dimension (special enquiry)
  - Execution of opening for a individual glazing
- Door adjusted to top railway system
- Flashing of the door opening



Enquiry/order example:



DRK-L 60 - coldroom hinged door, polyester paint finish, door leaf thickness 60 mm, direction of opening to the right.

# HINGED DOORS ECO DRE-L 60 T>0 °C (COLDROOM)

## Characteristic:

- Door leaf made of sandwich panel with PIR core 60 mm
- Door finish - galvanized steel sheet coated with polyester paint in white colour RAL 9010
- Door leaf framing - steel channel section, made of steel sheet coated with polyester paint in white colour RAL 9010
- Lock - delivered by FERMOD
- Hinges - delivered by FERMOD
- Frame - angle bar shaped, made of steel sheet coated with polyester paint in RAL 9010

DRE-L 60 SINGLE LEAF								
S \ H	1700	1800	1900	2000	2100	2200	2300	2400
700	483	490	498	505	513	521	528	536
800	486	494	501	509	517	524	532	539
900	489	497	505	512	520	528	535	543
1000	496	504	512	519	527	535	543	550
1100	514	523	531	539	548	556	564	572
1200	562	573	585	596	607	619	630	642
1300	615	629	643	658	672	686	701	715
1400	618	632	647	661	675	690	704	718
1500	622	636	650	664	678	693	707	722

DRE-L 60 DOUBLE LEAF						
S \ H	2000	2100	2200	2300	2400	2500
1400	907	922	937	951	966	981
1600	914	928	943	958	973	987
1800	920	935	950	964	979	994
2000	933	949	964	979	994	1009
2200	947	963	978	994	1009	1025
2400	1060	1081	1102	1122	1143	1164
2600	1173	1199	1225	1251	1278	1304

## STANDARD HINGED DOOR - POLYESTER DRS-L 60 T>0 ° C (COLDROOM)

### Characteristic:

- Door leaf made of sandwich panel with PIR core 60 mm
- Door finish - galvanized steel sheet coated with polyester paint in white colour RAL 9010
- Door leaf framing - steel channel section, made of steel sheet coated with polyester paint in white colour RAL 9010
- Lock - delivered by FERMOD
- Hinges - delivered by FERMOD
- Frame - complex and profiled, made of steel sheet coated with polyester paint in RAL 9010
- Lower element - channel section made of stainless, acid-proof steel sheet, type 1.4301

DRS-L 60 SINGLE LEAF									
S \ H	1700	1800	1900	2000	2100	2200	2300	2400	2500
<b>700</b>	577	585	593	602	610	643	676	709	742
<b>800</b>	592	602	611	619	628	664	699	734	769
<b>900</b>	609	618	628	637	647	684	722	759	797
<b>1000</b>	625	635	645	655	666	705	745	785	824
<b>1100</b>	675	687	698	710	721	766	810	854	898
<b>1200</b>	702	714	727	740	752	801	850	899	948
<b>1300</b>	719	733	746	760	773	824	876	927	978
<b>1400</b>	737	751	765	780	794	847	901	955	1 009
<b>1500</b>	755	770	785	799	814	870	927	983	1 040

DRS-L 80 DOUBLE LEAF						
S \ H	2000	2100	2200	2300	2400	2500
<b>1400</b>	1 046	1 060	1 074	1 089	1 103	1 117
<b>1500</b>	1 064	1 079	1 094	1 109	1 124	1 138
<b>1600</b>	1 082	1 098	1 113	1 129	1 144	1 159
<b>1700</b>	1 100	1 116	1 132	1 148	1 165	1 181
<b>1800</b>	1 118	1 135	1 152	1 168	1 185	1 202
<b>1900</b>	1 136	1 154	1 171	1 188	1 206	1 223
<b>2000</b>	1 154	1 172	1 190	1 208	1 226	1 244
<b>2100</b>	1 172	1 191	1 210	1 228	1 247	1 265
<b>2200</b>	1 191	1 210	1 229	1 248	1 267	1 286
<b>2300</b>	1 209	1 229	1 248	1 268	1 288	1 307
<b>2400</b>	1 227	1 247	1 268	1 288	1 308	1 329
<b>2500</b>	1 245	1 266	1 287	1 308	1 329	1 350
<b>2600</b>	1 263	1 285	1 306	1 328	1 349	1 371

### Options:

- door leaf made of PIR sandwich panel thickness 80 mm - surcharge of 15 EUR/m<sup>2</sup>
- window, size 400 mm x 600 mm - surcharge of 105 EUR

## PREMIUM HINGED DOORS - POLYESTER DRK-L 60 T>0 ° C (COLDROOM)

### Characteristic:

- Door leaf thickness 60 mm, produced on the press, by high pressure injection of PUR foam into door framework
- Door finish - galvanized steel sheet coated with polyester paint in white colour RAL 9010
- Door leaf core - polyurethane foam, density of minimum 40 kg/m<sup>3</sup>
- Lock - delivered by FERMOD
- Hinges - delivered by FERMOD
- Frame - complex and profiled, made of steel sheet coated with polyester paint in RAL 9010
- Lower element - channel section made of stainless, acid-proof steel sheet, type 1.4301

<b>DRK-L 60 SINGLE LEAF</b>									
S \ H	1700	1800	1900	2000	2100	2200	2300	2400	2500
<b>700</b>	610	624	638	652	666	680	741	757	771
<b>800</b>	627	636	646	655	673	691	757	776	795
<b>900</b>	643	654	664	674	692	710	779	798	818
<b>1000</b>	688	692	698	703	758	767	830	840	849
<b>1100</b>	752	764	776	787	800	811	880	892	905
<b>1200</b>	756	768	780	792	804	827	894	905	915
<b>1300</b>	790	804	818	832	847	861	933	945	957
<b>1400</b>	806	820	834	848	862	876	947	1018	1031
<b>1500</b>	839	854	869	884	899	914	1015	1090	1104

<b>DRK-L 80 DOUBLE LEAF</b>						
S \ H	2000	2100	2200	2300	2400	2500
<b>1400</b>	1118	1132	1145	1159	1172	1186
<b>1500</b>	1130	1148	1167	1185	1204	1222
<b>1600</b>	1141	1164	1188	1211	1235	1258
<b>1700</b>	1164	1186	1213	1240	1267	1294
<b>1800</b>	1187	1208	1239	1269	1300	1331
<b>1900</b>	1210	1230	1264	1298	1332	1367
<b>2000</b>	1233	1252	1290	1327	1365	1403
<b>2100</b>	1240	1273	1309	1345	1381	1439
<b>2200</b>	1247	1295	1329	1363	1398	1507
<b>2300</b>	1250	1316	1375	1382	1414	1575
<b>2400</b>	1254	1337	1421	1441	1474	1644
<b>2500</b>	1258	1358	1466	1501	1536	1713

### Options:

- door leaf thickness 80 mm - surcharge of 30 EUR/m<sup>2</sup>
- window, size 400 mm x 600 mm - surcharge of 105 EUR
- door made in colour other than RAL 9010 - surcharge of 60 EUR/m<sup>2</sup>

## PREMIUM HINGED DOORS - STAINLESS DRK-N 60 T>0 °C (COLDROOM)

### Characteristic:

- **Door leaf thickness** 60 mm, produced on the press, by high pressure injection of PUR foam into door framework
- **Door finish** - stainless, acid-proof steel, type 1.4301, mat surface 2B or grinded surface 4N (option)
- **Door leaf core** - polyurethane foam, density of minimum 40 kg/m<sup>3</sup>
- **Lock** - delivered by FERMOD
- **Hinges** - delivered by FERMOD
- **Frame** - complex and profiled, made of stainless, acid-proof mat surface 2B or grinded surface 4N (option)
- **Lower element** - channel section made of stainless, acid-proof steel sheet, type 1.4301

<b>DRK-N 60 SINGLE LEAF</b>									
S \ H	1700	1800	1900	2000	2100	2200	2300	2400	2500
<b>700</b>	769	771	791	811	831	851	871	890	908
<b>800</b>	797	817	836	856	874	893	911	929	947
<b>900</b>	825	845	866	886	906	926	947	967	987
<b>1000</b>	862	886	910	935	956	976	995	1015	1034
<b>1100</b>	917	940	963	987	1010	1033	1056	1080	1103
<b>1200</b>	927	956	985	1014	1043	1067	1087	1108	1128
<b>1300</b>	975	1004	1032	1061	1089	1118	1143	1169	1194
<b>1400</b>	1012	1041	1069	1097	1125	1154	1174	1258	1286
<b>1500</b>	1049	1077	1105	1133	1161	1189	1256	1348	1378

<b>DRK-N 80 DOUBLE LEAF</b>						
S \ H	2000	2100	2200	2300	2400	2500
<b>1400</b>	1313	1353	1393	1434	1474	1514
<b>1500</b>	1335	1375	1415	1455	1495	1535
<b>1600</b>	1356	1396	1436	1476	1516	1555
<b>1700</b>	1399	1433	1474	1515	1556	1597
<b>1800</b>	1442	1470	1512	1554	1596	1639
<b>1900</b>	1485	1507	1550	1594	1637	1680
<b>2000</b>	1527	1544	1589	1633	1677	1722
<b>2100</b>	1570	1581	1609	1653	1698	1763
<b>2200</b>	1613	1618	1629	1673	1718	1847
<b>2300</b>	1634	1659	1687	1694	1738	1931
<b>2400</b>	1656	1700	1745	1767	1813	2015
<b>2500</b>	1677	1741	1803	1840	1888	2098

### Options:

- door leaf thickness 80 mm - surcharge of 30 EUR/m<sup>2</sup>
- window, size 400 mm x 600 mm - surcharge of 105 EUR



## STANDARD HINGED DOOR - POLYESTER DRS-L 100 T>-25 °C (FREEZER)

### Characteristic:

- Door leaf made of sandwich panel with PIR core 100 mm
- Door finish - galvanized steel sheet coated with polyester paint in white colour RAL 9010
- Door leaf framing - steel channel section, made of steel sheet coated with polyester paint in white colour RAL 9010
- Lock - delivered by FERMOD
- Hinges - delivered by FERMOD
- Frame - complex and profiled, made of steel sheet coated with polyester paint in RAL 9010
- Lower element - channel section made of stainless, acid-proof steel sheet, type 1.4301

<b>DRS-L 100 SINGLE LEAF</b>									
S \ H	1700	1800	1900	2000	2100	2200	2300	2400	2500
<b>700</b>	739	750	760	771	781	808	836	863	890
<b>800</b>	761	775	789	804	818	840	861	882	904
<b>900</b>	782	800	818	837	855	871	887	902	918
<b>1000</b>	803	819	835	850	866	887	908	929	951
<b>1100</b>	829	842	856	869	883	910	938	965	992
<b>1200</b>	838	855	873	890	908	931	954	978	1001
<b>1300</b>	847	868	890	911	932	958	984	1010	1052
<b>1400</b>	882	904	927	949	972	991	1010	1053	1133
<b>1500</b>	917	941	964	988	1011	1021	1068	1115	1160

<b>DRS-L 100 DOUBLE LEAF</b>						
S \ H	2000	2100	2200	2300	2400	2500
<b>1400</b>	1275	1298	1314	1335	1354	1371
<b>1500</b>	1296	1317	1337	1357	1379	1400
<b>1600</b>	1318	1338	1360	1381	1405	1429
<b>1700</b>	1338	1360	1381	1405	1429	1452
<b>1800</b>	1360	1382	1405	1429	1500	1524
<b>1900</b>	1481	1505	1524	1548	1576	1600
<b>2000</b>	1500	1524	1551	1575	1600	1624
<b>2100</b>	1524	1548	1574	1599	1624	1649
<b>2200</b>	1545	1571	1595	1623	1648	1674
<b>2300</b>	1565	1593	1619	1645	1673	1699
<b>2400</b>	1587	1614	1642	1669	1696	1726
<b>2500</b>	1608	1636	1664	1692	1724	1750

### Options:

- door leaf made of PIR sandwich panel thickness 120 mm - surcharge of 15 EUR/m<sup>2</sup>
- door leaf made of PIR sandwich panel thickness 160 mm - surcharge of 40 EUR/m<sup>2</sup>
- window, size 400 mm x 600 mm - surcharge of 105 EUR

## PREMIUM HINGED DOORS - POLYESTER DRK-L 100 T>-25 °C (FREEZER)

### Characteristic:

- Door leaf thickness 100 mm, produced on the press, by high pressure injection of PUR foam into door framework
- Door finish - galvanized steel sheet coated with polyester paint in white colour RAL 9010
- Door leaf core - polyurethane foam, density of minimum 40 kg/m<sup>3</sup>
- Lock - delivered by FERMOD
- Hinges - delivered by FERMOD
- Frame - complex and profiled, made of steel sheet coated with polyester paint in RAL 9010
- Lower element - channel section made of stainless, acid-proof steel sheet, type 1.4301

<b>DRK-L 100 SINGLE LEAF</b>									
<b>S \ H</b>	<b>1700</b>	<b>1800</b>	<b>1900</b>	<b>2000</b>	<b>2100</b>	<b>2200</b>	<b>2300</b>	<b>2400</b>	<b>2500</b>
<b>700</b>	806	820	834	848	862	876	890	904	918
<b>800</b>	831	847	862	876	892	907	922	937	952
<b>900</b>	857	873	889	905	921	938	953	970	986
<b>1000</b>	897	919	941	962	1009	1029	1037	1038	1038
<b>1100</b>	904	921	938	955	998	999	1012	1032	1052
<b>1200</b>	943	965	986	1007	1028	1047	1065	1084	1102
<b>1300</b>	971	992	1013	1034	1055	1076	1090	1104	1126
<b>1400</b>	999	1021	1042	1063	1085	1106	1119	1164	1213
<b>1500</b>	1027	1049	1071	1092	1114	1136	1179	1230	1281

<b>DRK-L 100 DOUBLE LEAF</b>						
<b>S \ H</b>	<b>2000</b>	<b>2100</b>	<b>2200</b>	<b>2300</b>	<b>2400</b>	<b>2500</b>
<b>1400</b>	1418	1440	1457	1477	1496	1514
<b>1500</b>	1439	1460	1480	1500	1521	1543
<b>1600</b>	1461	1481	1502	1524	1548	1571
<b>1700</b>	1481	1502	1524	1548	1571	1595
<b>1800</b>	1502	1525	1548	1571	1643	1667
<b>1900</b>	1624	1648	1667	1690	1719	1743
<b>2000</b>	1643	1667	1694	1718	1743	1767
<b>2100</b>	1667	1690	1717	1742	1767	1792
<b>2200</b>	1688	1714	1738	1765	1790	1817
<b>2300</b>	1708	1736	1762	1788	1815	1842
<b>2400</b>	1730	1757	1785	1812	1839	1869
<b>2500</b>	1751	1779	1807	1835	1867	1893

### Options:

- door leaf thickness 120 mm - surcharge of 30 EUR/m<sup>2</sup>
- door leaf made of PIR sandwich panel thickness 150 mm - surcharge of 60 EUR/m<sup>2</sup>
- window, size 400 mm x 600 mm - surcharge of 105 EUR
- door made in colour other than RAL 9010 - surcharge of 60 EUR/m<sup>2</sup>

## PREMIUM HINGED DOORS - STAINLESS DRK-N 100 T>-25 °C (FREEZER)

### Characteristic:

- Door leaf thickness 100 mm, produced on the press, by high pressure injection of PUR foam into door framework
- Door finish - stainless, acid-proof steel, type 1.4301, mat surface 2B or grinded surface 4N (option)
- Door leaf core - polyurethane foam, density of minimum 40 kg/m<sup>3</sup>
- Lock - delivered by FERMOD
- Hinges - delivered by FERMOD
- Frame - complex and profiled, made of stainless, acid-proof mat surface 2B or grinded surface 4N (option)
- Lower element - channel section made of stainless, acid-proof steel sheet, type 1.4301

<b>DRK-N 100 SINGLE LEAF</b>									
<b>S</b> \ <b>H</b>	<b>1700</b>	<b>1800</b>	<b>1900</b>	<b>2000</b>	<b>2100</b>	<b>2200</b>	<b>2300</b>	<b>2400</b>	<b>2500</b>
<b>700</b>	911	934	957	980	1003	1027	1050	1073	1096
<b>800</b>	946	970	994	1018	1043	1068	1094	1119	1144
<b>900</b>	981	1007	1033	1058	1085	1112	1139	1166	1193
<b>1000</b>	1035	1065	1094	1124	1151	1182	1214	1245	1277
<b>1100</b>	1054	1080	1105	1130	1155	1196	1237	1278	1318
<b>1200</b>	1085	1114	1142	1170	1198	1226	1275	1324	1373
<b>1300</b>	1120	1149	1179	1209	1238	1268	1294	1325	1378
<b>1400</b>	1154	1185	1216	1247	1278	1309	1362	1415	1476
<b>1500</b>	1188	1221	1253	1286	1319	1351	1404	1466	1527

<b>DRK-N 100 DOUBLE LEAF</b>						
<b>S</b> \ <b>H</b>	<b>2000</b>	<b>2100</b>	<b>2200</b>	<b>2300</b>	<b>2400</b>	<b>2500</b>
<b>1400</b>	1729	1757	1786	1814	1845	1871
<b>1500</b>	1762	1790	1821	1850	1881	1910
<b>1600</b>	1790	1821	1852	1883	1917	1948
<b>1700</b>	1821	1855	1887	1919	1952	1983
<b>1800</b>	1961	1994	2027	2061	2095	2129
<b>1900</b>	1992	2026	2061	2095	2131	2179
<b>2000</b>	2024	2058	2095	2131	2167	2214
<b>2100</b>	2055	2090	2131	2164	2202	2250
<b>2200</b>	2095	2143	2179	2207	2250	2286
<b>2300</b>	2131	2179	2214	2243	2281	2333
<b>2400</b>	2167	2202	2250	2276	2317	2381
<b>2500</b>	2202	2226	2274	2310	2357	2429

### Options:

- door leaf thickness 120 mm - surcharge of 30 EUR/m<sup>2</sup>
- door leaf made of PIR sandwich panel thickness 150 mm - surcharge of 60 EUR/m<sup>2</sup>
- window, size 400 mm x 600 mm - surcharge of 105 EUR

## PREMIUM HINGED FLUSH DOORS - POLYESTER DRKZ-L 80 T>0°C (COLDROOM)

### Characteristic:

- Door leaf thickness 80 mm, produced on the press, by high pressure injection of PUR foam into door framework;
- Door finish - steel channel section, made of steel sheet coated with polyester paint in white colour RAL 9010
- Door leaf core - polyurethane foam, density of minimum min. 40 kg/m<sup>3</sup>
- Lock - delivered by FERMOD
- Hinges - delivered by FERMOD/RAHRBACH
- The frame flush with the external wall surface - complex and profiled, made of steel sheet coated with polyester paint in RAL 9010
- Lower element- channel section made of stainless, acid-proof steel sheet, type 1.4301

<b>DRKZ-L 80 SINGLE LEAF</b>									
<b>S \ H</b>	<b>1700</b>	<b>1800</b>	<b>1900</b>	<b>2000</b>	<b>2100</b>	<b>2200</b>	<b>2300</b>	<b>2400</b>	<b>2500</b>
<b>700</b>	794	812	830	847	866	884	902	921	940
<b>800</b>	816	828	840	853	876	899	922	945	968
<b>900</b>	840	853	865	878	906	929	951	974	997
<b>1000</b>	899	906	913	921	988	1000	1012	1025	1037
<b>1100</b>	967	982	997	1012	1028	1044	1059	1074	1089
<b>1200</b>	975	990	1006	1021	1037	1065	1078	1107	1133
<b>1300</b>	1005	1023	1041	1060	1078	1096	1111	1140	1177

<b>DRKZ-L 80 DOUBLE LEAF</b>						
<b>S \ H</b>	<b>2000</b>	<b>2100</b>	<b>2200</b>	<b>2300</b>	<b>2400</b>	<b>2500</b>
<b>1400</b>	1225	1239	1254	1269	1284	1298
<b>1500</b>	1237	1257	1278	1298	1318	1338
<b>1600</b>	1250	1275	1301	1326	1352	1378
<b>1700</b>	1275	1299	1329	1358	1388	1417
<b>1800</b>	1300	1323	1356	1390	1423	1457
<b>1900</b>	1325	1347	1384	1422	1459	1497
<b>2000</b>	1350	1371	1412	1454	1495	1536
<b>2100</b>	1358	1394	1434	1473	1513	1576
<b>2200</b>	1365	1418	1456	1493	1530	1602
<b>2300</b>	1369	1441	1506	1513	1548	1628
<b>2400</b>	1373	1465	1556	1590	1624	1700
<b>2500</b>	1377	1488	1565	1629	1700	1770

### Options:

- window, size 400 mm x 600 mm - surcharge of 105 EUR
- door made in colour other than RAL 9010 - surcharge of 60 EUR/m<sup>2</sup>

## PREMIUM HINGED FLUSH DOORS - STAINLESS DRKZ-N 80 T>0°C (COLDROOM)

### Characteristic:

- **Door leaf** thickness 80 mm, produced on the press, by high pressure injection of PUR foam into door framework;
- **Door finish** - stainless, acid-proof steel, type 1.4301, mat surface 2B or grinded surface 4N (option)
- **Door leaf core** - polyurethane foam, density of minimum min. 40 kg/m<sup>3</sup>
- **Lock** - delivered by FERMOD
- **Hinges** - delivered by FERMOD/RAHRBACH
- **The frame flush with the external wall surface** - complex and profiled, made of stainless, acid-proof mat surface 2B or grinded surface 4N (option)
- **Lower element**- channel section made of stainless, acid-proof steel sheet, type 1.4301

<b>DRKZ-N 80 SINGLE LEAF</b>									
<b>S \ H</b>	<b>1700</b>	<b>1800</b>	<b>1900</b>	<b>2000</b>	<b>2100</b>	<b>2200</b>	<b>2300</b>	<b>2400</b>	<b>2500</b>
<b>700</b>	922	925	949	973	997	1020	1044	1068	1089
<b>800</b>	956	979	1003	1027	1049	1071	1092	1114	1136
<b>900</b>	990	1014	1038	1062	1087	1111	1136	1160	1184
<b>1000</b>	1034	1063	1092	1121	1147	1170	1194	1217	1241
<b>1100</b>	1064	1091	1118	1145	1172	1199	1226	1253	1281
<b>1200</b>	1097	1131	1165	1199	1234	1262	1286	1310	1335
<b>1300</b>	1154	1188	1221	1255	1289	1322	1353	1398	1435

<b>DRKZ-N 80 DOUBLE LEAF</b>						
<b>S \ H</b>	<b>2000</b>	<b>2100</b>	<b>2200</b>	<b>2300</b>	<b>2400</b>	<b>2500</b>
<b>1400</b>	1462	1507	1551	1596	1641	1685
<b>1500</b>	1486	1530	1575	1619	1664	1708
<b>1600</b>	1510	1554	1598	1643	1687	1731
<b>1700</b>	1557	1595	1641	1687	1732	1778
<b>1800</b>	1605	1637	1683	1730	1777	1824
<b>1900</b>	1610	1634	1681	1728	1775	1822
<b>2000</b>	1656	1675	1723	1771	1819	1867
<b>2100</b>	1703	1715	1745	1793	1841	1912
<b>2200</b>	1749	1755	1767	1815	1863	1942
<b>2300</b>	1772	1799	1829	1836	1885	2031
<b>2400</b>	1795	1844	1892	1949	2034	2364
<b>2500</b>	1819	1888	1955	2031	2119	2207

### Options:

- window, size 400 mm x 600 mm - surcharge of 105 EUR

## PREMIUM HINGED FLUSH DOORS - POLYESTER DRKZ-L 100 T>-25°C (FREEZER)

### Characteristic:

- Door leaf thickness 100 mm, produced on the press, by high pressure injection of PUR foam into door framework;
- Door finish - steel channel section, made of steel sheet coated with polyester paint in white colour RAL 9010
- Door leaf core - polyurethane foam, density of minimum min. 40 kg/m<sup>3</sup>
- Lock - delivered by FERMOD
- Hinges - delivered by FERMOD/RAHRBACH
- the frame flush with the external wall surface - complex and profiled, made of steel sheet coated with polyester paint in RAL 9010
- Lower element- channel section made of stainless, acid-proof steel sheet, type 1.4301

<b>DRKZ-L 100 SINGLE LEAF</b>									
<b>S \ H</b>	<b>1700</b>	<b>1800</b>	<b>1900</b>	<b>2000</b>	<b>2100</b>	<b>2200</b>	<b>2300</b>	<b>2400</b>	<b>2500</b>
<b>700</b>	892	907	923	938	954	969	985	1000	1016
<b>800</b>	920	937	953	970	987	1003	1020	1037	1053
<b>900</b>	948	966	984	1002	1019	1037	1055	1073	1091
<b>1000</b>	993	1017	1041	1064	1116	1139	1147	1148	1149
<b>1100</b>	1038	1058	1077	1097	1145	1147	1162	1185	1207
<b>1200</b>	1083	1108	1132	1156	1180	1202	1223	1245	1266
<b>1300</b>	1115	1139	1163	1188	1212	1236	1252	1306	1360

<b>DRKZ-L 100 DOUBLE LEAF</b>						
<b>S \ H</b>	<b>2000</b>	<b>2100</b>	<b>2200</b>	<b>2300</b>	<b>2400</b>	<b>2500</b>
<b>1400</b>	1545	1570	1588	1610	1631	1651
<b>1500</b>	1569	1591	1613	1635	1658	1682
<b>1600</b>	1592	1614	1638	1661	1687	1713
<b>1700</b>	1614	1638	1661	1687	1713	1739
<b>1800</b>	1638	1662	1687	1713	1791	1817
<b>1900</b>	1770	1796	1817	1843	1874	1900
<b>2000</b>	1791	1817	1847	1872	1900	1926
<b>2100</b>	1817	1843	1871	1898	1926	1953
<b>2200</b>	1840	1869	1895	1924	1952	1980
<b>2300</b>	1862	1892	1920	1949	1979	2007
<b>2400</b>	1885	1915	1945	1975	2005	2037
<b>2500</b>	1909	1939	1970	2000	2035	2063

### Options:

- window, size 400 mm x 600 mm - surcharge of 105 EUR
- door made in colour other than RAL 9010 - surcharge of 60 EUR/m<sup>2</sup>

## PREMIUM HINGED FLUSH DOORS - STAINLESS DRKZ-N 100 T>-25°C (FREEZER)

### Characteristic:

- Door leaf thickness 100 mm, produced on the press, by high pressure injection of PUR foam into door framework;
- Door finish - stainless, acid-proof steel, type 1.4301, mat surface 2B or grinded surface 4N (option)
- Door leaf core - polyurethane foam, density of minimum min. 40 kg/m<sup>3</sup>
- Lock - delivered by FERMOD
- Hinges - delivered by FERMOD/RAHRBACH
- The frame flush with the external wall surface - made of stainless, acid-proof mat surface 2B or grinded surface 4N (option)
- Lower element - channel section made of stainless, acid-proof steel sheet, type 1.4301

<b>DRKZ-N 100 SINGLE LEAF</b>									
<b>S \ H</b>	<b>1700</b>	<b>1800</b>	<b>1900</b>	<b>2000</b>	<b>2100</b>	<b>2200</b>	<b>2300</b>	<b>2400</b>	<b>2500</b>
<b>700</b>	1069	1096	1123	1150	1177	1204	1231	1258	1285
<b>800</b>	1110	1138	1166	1194	1223	1253	1283	1313	1342
<b>900</b>	1151	1181	1211	1241	1273	1305	1336	1368	1399
<b>1000</b>	1214	1249	1284	1319	1350	1387	1424	1460	1498
<b>1100</b>	1225	1255	1284	1313	1343	1390	1437	1485	1532
<b>1200</b>	1285	1319	1352	1385	1419	1452	1510	1568	1602
<b>1300</b>	1326	1361	1396	1431	1466	1501	1533	1565	1631

<b>DRKZ-N 100 DOUBLE LEAF</b>						
<b>S \ H</b>	<b>2000</b>	<b>2100</b>	<b>2200</b>	<b>2300</b>	<b>2400</b>	<b>2500</b>
<b>1400</b>	1901	1933	1964	1996	2030	2059
<b>1500</b>	1938	1970	2004	2035	2069	2100
<b>1600</b>	1970	2004	2038	2072	2108	2142
<b>1700</b>	2004	2040	2076	2111	2148	2182
<b>1800</b>	2157	2193	2230	2267	2305	2341
<b>1900</b>	2191	2229	2267	2305	2344	2396
<b>2000</b>	2226	2264	2305	2344	2383	2436
<b>2100</b>	2260	2300	2344	2381	2423	2475
<b>2200</b>	2305	2357	2396	2428	2475	2514
<b>2300</b>	2344	2396	2436	2467	2509	2567
<b>2400</b>	2383	2423	2475	2504	2548	2619
<b>2500</b>	2423	2449	2501	2540	2593	2671

### Options:

- door leaf thickness 120 mm - surcharge of 30 EUR/m<sup>2</sup>
- window, size 400 mm x 600 mm - surcharge of 105 EUR



## COLDROOM AND FREEZER SLIDING DOORS, “DP” TYPE

### APPLICATION

DP doors are applied in coldrooms and freezers within the temperature from  $-40^{\circ}\text{C}$  to  $+50^{\circ}\text{C}$ . The structure of the door ensures its strength and durability. High insulation value has been achieved thanks to polyurethane foam core (PUR).

DP - lightweight, up to 120 kg

DP - heavyweight, up to 400 kg

### DOOR LEAF

DP doors are available in 2 versions: In DPS (STANDARD) version door leaf is made of sandwich panel with PIR core and framed by steel channel section. In DPK (PREMIUM) version door leaf is produced on the press, by high pressure injection of PUR foam into door framework. The density of PUR core is not less than  $40\text{kg}/\text{m}^3$ .

#### Available thicknesses:

- 60, 80 mm - coldroom door (single and double leaf)
- 100, 120, 150, 160mm - freezer door (single and double leaf)

#### STANDARD door leaf finish (sandwich panel):

- Galvanized steel sheet (L) thickness 0,5 mm, coated with polyester paint in white colour RAL 9010

#### PREMIUM door leaf finish:

- Stainless, acid-proof steel (N), type 1.4301, thickness 0,8 mm, mat surface 2B
- Galvanized steel sheet (L) thickness 0,75 mm, coated with polyester paint in white colour RAL 9010

Door leaf is equipped with gasket delivered by FERMOD (F).

### FRAME TYPE

In both DPS and DPK version door frame is filled with PUR foam. It is made of stainless, acid-proof steel (N), type 1.4301, thickness 1,5 mm, mat surface 2B or galvanized steel sheet (L) thickness 1,5 mm, coated with polyester paint in white colour (RAL 9010).

Freezer door frame and threshold are equipped in heating system (heating cable, 230 V, 40 W/rm).



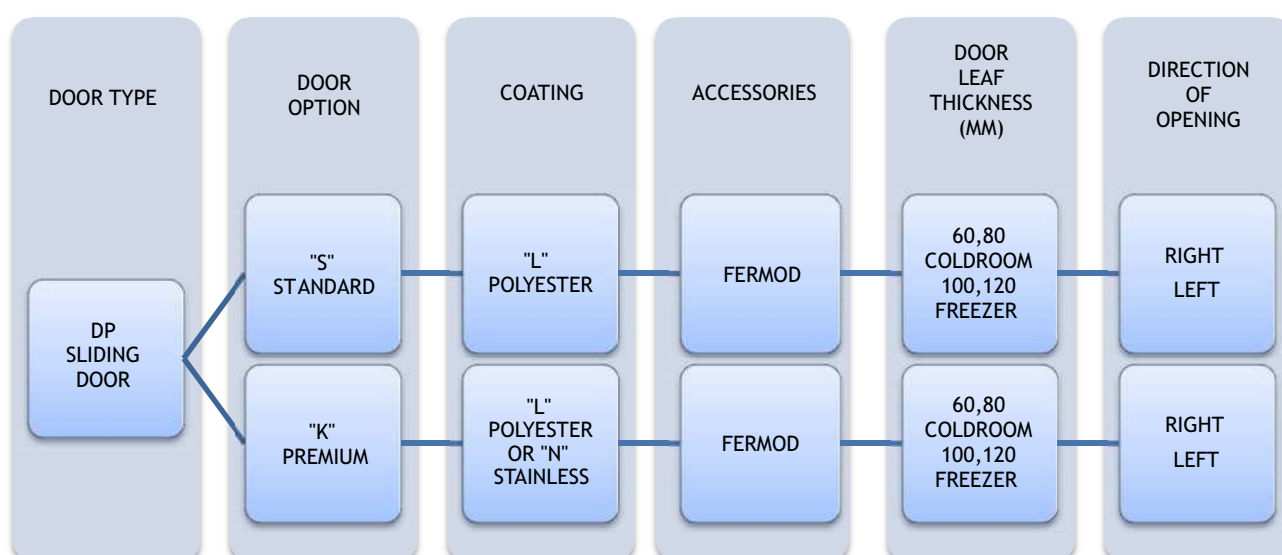
Lock is delivered by FERMOD (F). It is equipped with patent insert with possibility of emergency opening from the inside even if the door is locked.

ACCESSORIES

- FERMOD accessories (F), aluminium rail - lightweight type
- FERMOD accessories (F), galvanized steel or stainless steel rail - heavyweight type
- FERMOD accessories (F), stainless steel rail - lightweight type (option)
- FERMOD accessories (F), stainless steel rail - heavyweight type (option)

OPTIONS

- Untypical door leaf finish:
  - Stainless, acid-proof steel (N), type 1.4301, thickness 0,8 mm, grinded surface 4B or grained surface
  - Galvanized steel sheet (T) thickness 0,75 mm, coated with polyester paint other than white
  - panel made of polyester resins reinforced with glass fibre in RAL 9016 with stainless, acid-proof door leaf framing (N), type 1.4301
- Availability to produce door with and without a threshold (lower element is installed in the floor)
- Flashing of the door opening
- Application of automatic kits delivered by FERMOD (F)
- Door windows:
  - Round window  $\varnothing 280$  mm
  - Window in a different shape (special enquiry)
- Door adjusted to top railway system



Enquiry/order example:



DPK-NF 60 - Premium coldroom sliding door, stainless steel finish, FERMOD accessories, door leaf thickness 60 mm, direction of opening to the right.

## STANDARD SLIDING DOOR - POLYESTER - FERMOD ACCESSORIES - DPS-LF 60 T>0 °C (COLDROOM)

### Characteristic:

- Door leaf made of sandwich panel with PIR core 60 mm
- Door finish - galvanized steel sheet, coated with polyester paint in white colour RAL 9010
- Door leaf framing - steel channel section, made of stainless, acid-proof steel sheet, type 1.4301
- Frame - complex and profiled, made of steel sheet coated with polyester paint in RAL 9010
- Accessories - delivered by FERMOD, made of aluminium
- Lower element - channel section made of stainless, acid-proof steel sheet, type 1.4301

<b>DPS-LF 60 SINGLE LEAF</b>								
<b>S \ H</b>	<b>1800</b>	<b>1900</b>	<b>2000</b>	<b>2100</b>	<b>2200</b>	<b>2300</b>	<b>2400</b>	<b>2500</b>
<b>800</b>	1242	1251	1260	1269	1278	1287	1296	1306
<b>900</b>	1259	1269	1279	1289	1299	1309	1319	1329
<b>1000</b>	1277	1288	1299	1310	1320	1331	1342	1353
<b>1100</b>	1363	1374	1386	1397	1408	1420	1431	1442
<b>1200</b>	1406	1418	1431	1443	1455	1468	1480	1492
<b>1300</b>	1472	1486	1499	1513	1526	1540	1553	1567
<b>1400</b>	1509	1523	1537	1552	1566	1581	1595	1609
<b>1500</b>	1546	1562	1577	1592	1607	1622	1637	1653
<b>1600</b>	1584	1600	1616	1632	1648	1664	1680	1696
<b>1700</b>	1695	1711	1727	1744	1760	1776	1793	1809
<b>1800</b>	1712	1729	1746	1763	1780	1798	1815	1832
<b>1900</b>	1756	1774	1792	1810	1823	1837	1851	1865
<b>2000</b>	1800	1819	1837	1856	1875	1894	1913	1932

<b>S \ H</b>	<b>2500</b>	<b>2600</b>	<b>2700</b>	<b>2800</b>	<b>3000</b>	<b>3200</b>	<b>3400</b>	<b>3600</b>	<b>3800</b>	<b>4000</b>
<b>1500</b>	1653	1656	1661	1674	1693	1805	1837	1868	1900	1932
<b>1600</b>	1696	1736	1761	1771	1792	1910	1943	1976	2009	2042
<b>1700</b>	1809	1825	1847	1869	1891	2015	2049	2083	2117	2152
<b>1800</b>	1832	1849	1872	1895	1918	2045	2080	2117	2153	2189
<b>1900</b>	1865	1873	1897	1921	1945	2075	2112	2150	2188	2225
<b>2000</b>	1932	1950	1976	2002	2027	2163	2202	2242	2281	2321
<b>2200</b>	1979	2005	2030	2056	2082	2223	2266	2309	2352	2820
<b>2400</b>	2080	2115	2150	2185	2220	2361	2397	2434	2930	2980
<b>2600</b>	2232	2264	2295	2326	2357	2441	2525	3043	3091	3139
<b>2800</b>	2406	2443	2481	2518	2555	2593	3056	3118	3181	3243
<b>3000</b>	2492	2528	2563	2599	2634	3127	3182	3237	3292	3347

Prices in bold refer to doors with heavy system, door leaf made of PIR sandwich panel thickness 80 mm

### Options:

- door leaf made of PIR sandwich panel thickness 80 mm - surcharge of 15 EUR/m<sup>2</sup>
- window, size 400 mm x 600 mm - surcharge of 105 EUR
- lock with patent insert with possibility of opening from the inside - surcharge of 160 EUR
- handle support (lever) for light-weight door - surcharge of 160 EUR (in heavy-weight door this option is included free of charge)

## STANDARD SLIDING DOOR - POLYESTER - FERMOD ACCESSORIES - DPS-LF 60 T>0 °C (COLDROOM)

### Characteristic:

- Door leaf made of sandwich panel with PIR core 100 mm
- Door finish - galvanized steel sheet, coated with polyester paint in white colour RAL 9010
- Door leaf framing - steel channel section, made of stainless, acid-proof steel sheet, type 1.4301
- Frame - complex and profiled, made of steel sheet coated with polyester paint in RAL 9010
- Accessories - delivered by FERMOD, made of aluminium
- Lower element - channel section made of stainless, acid-proof steel sheet, type 1.4301

DPS-LF 60 DOUBLE LEAF								
S \ H	1800	1900	2000	2100	2200	2300	2400	2500
<b>1000</b>	2683	2690	2702	2714	2726			
<b>1100</b>	2702	2707	2714	2726	2743			
<b>1200</b>	2810	2821	2829	2838	2845	2857		
<b>1300</b>	2833	2840	2850	2857	2869	2881		
<b>1400</b>	2931	2942	2950	2964	2976	2988	3000	3012
<b>1500</b>	2952	2962	2976	2988	3000	3012	3012	3024
<b>1600</b>	3036	3048	3060	3071	3083	3095	3107	3119
<b>1700</b>	3052	3064	3079	3093	3105	3114	3131	3148
<b>1800</b>	3074	3086	3095	3107	3119	3131	3143	3167
<b>1900</b>	3167	3179	3190	3202	3214	3226	3238	3250
<b>2000</b>	3190	3202	3214	3226	3238	3250	3262	3274

S \ H	2200	2500	2800	3000	3500	4000	4500	4800
<b>2200</b>	3381	3429	3476	3524				
<b>2500</b>	5810	5860	5905	5952	6071	6190	6310	6405
<b>2700</b>	5905	5929	5976	6024	6143	6274	6405	6500
<b>3000</b>	6131	6181	6227	6262	6340	6429	6502	6583
<b>3200</b>	6202	6262	6310	6345	6429	6512	6595	6679
<b>3400</b>	6250	6302	6357	6390	6481	6571	6698	6786
<b>3600</b>	6490	6548	6607	6643	6738	6829	6976	7052
<b>3800</b>	6536	6595	6655	6690	6793	6886	7024	7119
<b>4000</b>	6583	6643	6702	6745	6862	7024	9500	7214
<b>4100</b>	6981	7048	7114	7156	7262	7412	7524	7586
<b>4400</b>	7702	7774	7857	7905	8048	8155	8274	8357
<b>4600</b>	7774	7857	7929	7976	8119	8233	8362	8452
<b>4800</b>	7945	8024	8095	8160	8293	8426	8560	8638
<b>5000</b>	8071	8160	8244	8301	8443	8585	8726	8810

Prices in bold refer to doors with heavy system, door leaf made of PIR sandwich panel thickness 80 mm

### Options:

- door leaf made of PIR sandwich panel thickness 80 mm - surcharge of 15 EUR/m<sup>2</sup>
- window, size 400 mm x 600 mm - surcharge of 105 EUR
- lock with patent insert with possibility of opening from the inside - surcharge of 720 EUR
- handle support (lever) for light-weight door - surcharge of 160 EUR (in heavy-weight door this option is included free of charge)

## STANDARD SLIDING DOOR - POLYESTER - FERMOD ACCESSORIES - o DPS-LF 100 T > 0 °C (FREEZER)

### Characteristic:

- **Door leaf** made of sandwich panel with PIR core 100 mm
- **Door finish** - galvanized steel sheet, coated with polyester paint in white colour RAL 9010
- **Door leaf framing** - steel channel section, made of stainless, acid-proof steel sheet, type 1.4301
- **Frame** - complex and profiled, made of steel sheet coated with polyester paint in RAL 9010
- **Accessories** - delivered by FERMOD, made of aluminium up to 400 kg
- **Lower element** - channel section made of stainless, acid-proof steel sheet, type 1.4301

DPS-LF 100 SINGLE LEAF						
S \ H	2500	3000	3500	4000	4500	5000
3000	/	/	/	/	6031	6143
3500	7000	7143	7262*	7381*	7500*	7619*
4000	7238	7381	7500*	7738*	7857*	8000*
4500	7595	7738	7893*	8048*	8214*	8333*
5000	8571	8738	8929*	9048*	9190*	9357*
5500	8905	9048	9239*	9405*	9571*	/
6000	9524	9714	9881*	10071*	/	/

\*door leaf to be self-assembled on the construction site

### Options:

- window, size 400 mm x 600 mm - surcharge of 105 EUR
- lock with patent insert with possibility of opening from the inside - surcharge of 310 EUR

## STANDARD SLIDING DOOR - POLYESTER - FERMOD ACCESSORIES - DPS-LF 100 T> -25°C (FREEZER)

### Characteristic:

- Door leaf made of sandwich panel with PIR core 100 mm
- Door finish - galvanized steel sheet, coated with polyester paint in white colour RAL 9010
- Door leaf framing - steel channel section, made of stainless, acid-proof steel sheet, type 1.4301
- Frame - complex and profiled, made of steel sheet coated with polyester paint in RAL 9010
- Accessories - delivered by FERMOD, made of aluminium
- Lower element - channel section made of stainless, acid-proof steel sheet, type 1.4301

DPS-LF 100 SINGLE LEAF								
S \ H	1800	1900	2000	2100	2200	2300	2400	2500
<b>800</b>	1399	1413	1427	1441	1453	1465	1476	1488
<b>900</b>	1420	1434	1448	1462	1476	1489	1502	1516
<b>1000</b>	1440	1455	1470	1485	1499	1514	1529	1543
<b>1100</b>	1532	1560	1568	1577	1592	1607	1622	1637
<b>1200</b>	1581	1597	1613	1630	1646	1662	1679	1695
<b>1300</b>	1655	1666	1676	1687	1710	1733	1755	1779
<b>1400</b>	1695	1714	1733	1751	1770	1788	1807	1825
<b>1500</b>	1735	1754	1774	1793	1813	1832	1852	1872
<b>1600</b>	1774	1795	1815	1836	1856	1877	1897	1917
<b>1700</b>	1884	1904	1925	1946	1966	1987	2008	2029
<b>1800</b>	1904	1926	1947	1969	1991	2012	2034	2055
<b>1900</b>	1952	1975	1998	2020	2043	2065	2088	2110
<b>2000</b>	2001	2025	2048	2071	2095	2118	2142	2165

S \ H	2500	2600	2700	2800	3000	3200	3400	3600	3800	4000
<b>1500</b>	1872	1881	1891	1900	1925	2055	2095	2134	2174	2214
<b>1600</b>	1917	1946	1974	2002	2029	2166	2207	2249	2290	2332
<b>1700</b>	2029	2050	2077	2105	2132	2276	2320	2363	2407	2450
<b>1800</b>	2055	2080	2108	2136	2164	2311	2356	2402	2447	2492
<b>1900</b>	2110	2105	2135	2165	2195	2346	2393	2440	2488	2534
<b>2000</b>	2165	2188	2220	2251	2282	2409	2428	2447	2528	2553
<b>2200</b>	2219	2250	2282	2313	2345	2484	2513	2541	2569	3155
<b>2400</b>	2327	2361	2395	2429	2463	2579	2664	2749	3262	3323
<b>2600</b>	2567	2605	2643	2681	2720	2780	2840	3374	3432	3491
<b>2800</b>	2641	2686	2731	2777	2822	2867	3386	3459	3532	3605
<b>3000</b>	2791	2820	2848	2905	2962	3455	3521	3587	3653	3719

Prices in bold refer to doors with heavy system

### Options:

- door leaf made of PIR sandwich panel thickness 120 mm - surcharge of 15 EUR/m<sup>2</sup>
- door leaf made of PIR sandwich panel thickness 160 mm - surcharge of 40 EUR/m<sup>2</sup>
- window, size 400 mm x 600 mm - surcharge of 105 EUR
- lock with patent insert with possibility of opening from the inside - surcharge of 160 EUR
- handle support (lever) for light-weight door - surcharge of 160 EUR (in heavy-weight door this option is included free of charge)

## STANDARD SLIDING DOOR - POLYESTER - FERMOD ACCESSORIES - DPS-LF 100 T> -25°C (FREEZER)

### Characteristic:

- Door leaf made of sandwich panel with PIR core 100 mm
- Door finish - galvanized steel sheet, coated with polyester paint in white colour RAL 9010
- Door leaf framing - steel channel section, made of stainless, acid-proof steel sheet, type 1.4301
- Frame - complex and profiled, made of steel sheet coated with polyester paint in RAL 9010
- Accessories - delivered by FERMOD, made of aluminium
- Lower element - channel section made of stainless, acid-proof steel sheet, type 1.4301

DPS-LF 100 DOUBLE LEAF								
S \ H	1800	1900	2000	2100	2200	2300	2400	2500
<b>1000</b>	3040	3048	3060	3071	3083			
<b>1100</b>	3060	3064	3071	3083	3100			
<b>1200</b>	3167	3179	3186	3195	3202	3214		
<b>1300</b>	3190	3198	3207	3214	3226	3238		
<b>1400</b>	3288	3299	3307	3321	3333	3345	3357	3369
<b>1500</b>	3310	3319	3333	3345	3357	3369	3369	3381
<b>1600</b>	3393	3405	3417	3429	3440	3452	3464	3476
<b>1700</b>	3410	3421	3436	3450	3462	3471	3488	3505
<b>1800</b>	3431	3443	3452	3464	3476	3488	3500	3524
<b>1900</b>	3524	3536	3548	3560	3571	3583	3595	3607
<b>2000</b>	3548	3560	3571	3583	3595	3607	3619	3631

S \ H	2200	2500	2800	3000	3500	4000
<b>2200</b>	3738	3786	3833	3881		
<b>2500</b>	6167	6217	6262	6310	6429	6548
<b>2700</b>	6262	6286	6333	6381	6500	6631
<b>3000</b>	6488	6538	6585	6619	6698	6786
<b>3200</b>	6560	6619	6667	6702	6786	6869
<b>3400</b>	6607	6660	6714	6748	6838	6929
<b>3600</b>	6848	6905	6964	7000	7095	7186
<b>3800</b>	6893	6952	7012	7048	7150	7243
<b>4000</b>	6940	7000	7060	7102	7219	7381

Prices in bold refer to doors with heavy system

### Options:

- door leaf made of PIR sandwich panel thickness 120 mm - surcharge of 15 EUR/m<sup>2</sup>
- window, size 400 mm x 600 mm - surcharge of 105 EUR
- lock with patent insert with possibility of opening from the inside - surcharge of 720 EUR
- handle support (lever) for light-weight door - surcharge of 160 EUR (in heavy-weight door this option is included free of charge)

## PREMIUM SLIDING DOOR - POLYESTER - FERMOD ACCESSORIES - DPK-LF 60 T>0 °C (COLDROOM)

### Characteristic:

- Door leaf thickness 60 mm, produced on the press, by high pressure injection of PUR foam into door framework
- Door finish - galvanized steel sheet coated with polyester paint in white colour RAL 9010
- Door leaf core - polyurethane foam, density of minimum 40 kg/m<sup>3</sup>
- Frame - complex and profiled, made of steel sheet coated with polyester paint in RAL 9010
- Accessories - delivered by FERMOD, made of aluminium
- Lower element - channel section made of stainless, acid-proof steel sheet, type 1.4301

DPK-LF 60 SINGLE LEAF								
S \ H	1800	1900	2000	2100	2200	2300	2400	2500
<b>800</b>	1322	1330	1338	1347	1355	1364	1373	1381
<b>900</b>	1338	1347	1357	1366	1375	1384	1394	1403
<b>1000</b>	1355	1365	1375	1385	1395	1405	1414	1425
<b>1100</b>	1406	1417	1428	1439	1449	1460	1471	1482
<b>1200</b>	1457	1469	1481	1492	1504	1516	1528	1540
<b>1300</b>	1547	1559	1572	1585	1598	1611	1623	1636
<b>1400</b>	1583	1588	1593	1597	1603	1627	1651	1676
<b>1500</b>	1618	1634	1650	1665	1681	1696	1712	1727
<b>1600</b>	1654	1668	1683	1698	1713	1739	1764	1779
<b>1700</b>	1780	1798	1815	1832	1849	1866	1883	1900
<b>1800</b>	1907	1924	1940	1956	1972	1989	2005	2021
<b>1900</b>	1951	1968	1985	2002	2019	2036	2053	2070
<b>2000</b>	1995	2016	2037	2057	2078	2099	2119	2258

S \ H	2500	2600	2700	2800	3000
<b>1500</b>	1727	1743	1793	1843	1892
<b>1600</b>	1779	1831	1848	1883	1917
<b>1700</b>	1900	2006	2043	2106	2412
<b>1800</b>	2021	2095	2169	2315	2429
<b>1900</b>	2070	2354	2408	2437	2466
<b>2000</b>	2258	2414	2462	2499	2537
<b>2200</b>	2432	2474	2516	2562	2609
<b>2400</b>	2723	2792	2862	2869	2876

Prices in bold refer to doors with heavy system, door leaf 80mm thickness

### Options:

- door leaf thickness 80 mm - surcharge of 30 EUR/m<sup>2</sup>
- window, size 400 mm x 600 mm - surcharge of 105 EUR
- lock with patent insert with possibility of opening from the inside - surcharge of 160 EUR
- door made in colour other than RAL 9010 - surcharge of 60 EUR/m<sup>2</sup>
- handle support (lever) for light-weight door - surcharge of 160 EUR (in heavy-weight door this option is included free of charge)

## PREMIUM SLIDING DOOR - POLYESTER - FERMOD ACCESSORIES - DPK-LF 60 T>0 °C (COLDROOM)

### Characteristic:

- **Door leaf thickness** 60 mm, produced on the press, by high pressure injection of PUR foam into door framework
- **Door finish** - galvanized steel sheet coated with polyester paint in white colour RAL 9010
- **Door leaf core** - polyurethane foam, density of minimum 40 kg/m<sup>3</sup>
- **Frame** - complex and profiled, made of steel sheet coated with polyester paint in RAL 9010
- **Accessories** - delivered by FERMOD, made of aluminium
- **Lower element** - channel section made of stainless, acid-proof steel sheet, type 1.4301

<b>DPK-LF 60 DOUBLE LEAF</b>									
<b>S \ H</b>	<b>1800</b>	<b>1900</b>	<b>2000</b>	<b>2100</b>	<b>2200</b>	<b>2300</b>	<b>2400</b>	<b>2500</b>	
<b>1000</b>	2850	2857	2869	2886	2917				
<b>1100</b>	2881	2869	2881	2905	2940				
<b>1200</b>	2964	2976	2983	2993	3000	3012			
<b>1300</b>	2981	2988	3000	3007	3014	3024			
<b>1400</b>	3048	3060	3067	3076	3095	3107	3126	3167	
<b>1500</b>	3101	3111	3119	3131	3143	3150	3162	3181	
<b>1600</b>	3198	3211	3219	3229	3238	3250	3260	3269	
<b>1700</b>	3297	3310	3321	3333	3345	3357	3369	3381	
<b>1800</b>	3310	3321	3345	3357	3376	3388	3400	3417	
<b>1900</b>	3393	3405	3417	3429	3440	3452	3464	3476	
<b>2000</b>	3429	3445	3460	3471	3483	3493	3512	3548	

<b>S \ H</b>	<b>2200</b>	<b>2500</b>	<b>2800</b>	<b>3000</b>	<b>3500</b>
<b>2200</b>	3571	3643	5752	5800	5871
<b>2500</b>	5967	6012	6069	6071	6155
<b>2700</b>	6126	6171	6217	6250	6321
<b>3000</b>	6345	6399	6452	6488	6567
<b>3200</b>	6376	6429	6488	6524	6607
<b>3400</b>	6512	6571	6619	6652	6738
<b>3600</b>	6726	6786	6845	6881	6988

Prices in bold refer to doors with heavy system,  
door leaf 80mm thickness

### Options:

- door leaf thickness 80 mm - surcharge of 30 EUR/m<sup>2</sup>
- window, size 400 mm x 600 mm - surcharge of 105 EUR
- lock with patent insert with possibility of opening from the inside - surcharge of 720 EUR
- door made in colour other than RAL 9010 - surcharge of 60 EUR/m<sup>2</sup>
- handle support (lever) for light-weight door - surcharge of 160 EUR (in heavy-weight door this option is included free of charge)



## PREMIUM SLIDING DOOR - POLYESTER - FERMOD ACCESSORIES - DPK-LF 100 T>-25°C (FREEZER)

### Characteristic:

- Door leaf thickness 100 mm, produced on the press, by high pressure injection of PUR foam into door framework
- Door finish - galvanized steel sheet coated with polyester paint in white colour RAL 9010
- Door leaf core - polyurethane foam, density of minimum 40 kg/m<sup>3</sup>
- Frame - complex and profiled, made of steel sheet coated with polyester paint in RAL 9010
- Accessories - delivered by FERMOD, made of aluminium
- Lower element - channel section made of stainless, acid-proof steel sheet, type 1.4301

DPK-LF 100 SINGLE LEAF								
S \ H	1800	1900	2000	2100	2200	2300	2400	2500
<b>800</b>	1499	1512	1524	1537	1550	1562	1575	1588
<b>900</b>	1539	1553	1566	1579	1593	1606	1620	1634
<b>1000</b>	1579	1593	1607	1622	1636	1651	1665	1680
<b>1100</b>	1598	1613	1628	1643	1658	1673	1689	1704
<b>1200</b>	1617	1633	1649	1664	1681	1696	1712	1728
<b>1300</b>	1740	1759	1778	1796	1815	1834	1853	1871
<b>1400</b>	1835	1856	1878	1899	1920	1942	1963	1984
<b>1500</b>	1863	1884	1906	1927	1948	1969	1991	2012
<b>1600</b>	1891	1912	1933	1955	1976	1997	2018	2039
<b>1700</b>	1919	1940	1961	1983	2004	2025	2046	2067
<b>1800</b>	2001	2022	2044	2065	2087	2108	2129	2151
<b>1900</b>	2049	2072	2096	2119	2143	2167	2190	2214
<b>2000</b>	2096	2114	2132	2169	2205	2241	2277	2408

S \ H	2500	2600	2700	2800	3000
<b>1500</b>	1984	1993	2002	2012	2057
<b>1600</b>	2017	2018	2020	2045	2070
<b>1700</b>	2067	2101	2134	2140	2619
<b>1800</b>	2151	2181	2211	2658	2668
<b>1900</b>	2214	2608	2639	2670	2701
<b>2000</b>	2408	2711	2744	2777	2810
<b>2200</b>	2778	2813	2849	2884	2919
<b>2400</b>	3030	3069	3109	3148	3187

Prices in bold refer to doors with heavy system

### Options:

- door leaf thickness 120 mm - surcharge of 30 EUR/m<sup>2</sup>
- door leaf thickness 150 mm - surcharge of 60 EUR/m<sup>2</sup>
- window, size 400 mm x 600 mm - surcharge of 105 EUR
- lock with patent insert with possibility of opening from the inside - surcharge of 160 EUR
- door made in colour other than RAL 9010 - surcharge of 60 EUR/m<sup>2</sup>
- handle support (lever) for light-weight door - surcharge of 160 EUR (in heavy-weight door this option is included free of charge)

## PREMIUM SLIDING DOOR - POLYESTER - FERMOD ACCESSORIES - DPK-LF 100 T>-25°C (FREEZER)

### Characteristic:

- Door leaf thickness 100 mm, produced on the press, by high pressure injection of PUR foam into door framework
- Door finish - galvanized steel sheet coated with polyester paint in white colour RAL 9010
- Door leaf core - polyurethane foam, density of minimum 40 kg/m<sup>3</sup>
- Frame - complex and profiled, made of steel sheet coated with polyester paint in RAL 9010
- Accessories - delivered by FERMOD, made of aluminium
- Lower element - channel section made of stainless, acid-proof steel sheet, type 1.4301

DPK-LF 100 DOUBLE LEAF								
S \ H	1800	1900	2000	2100	2200	2300	2400	2500
<b>1000</b>	3207	3214	3226	3243	3274			
<b>1100</b>	3238	3226	3238	3262	3298			
<b>1200</b>	3321	3333	3340	3350	3357	3369		
<b>1300</b>	3338	3345	3357	3364	3371	3381		
<b>1400</b>	3405	3417	3424	3433	3452	3464	3483	3524
<b>1500</b>	3459	3468	3476	3488	3500	3507	3519	3538
<b>1600</b>	3555	3568	3576	3586	3595	3607	3617	3626
<b>1700</b>	3654	3667	3679	3690	3702	3714	3726	3738
<b>1800</b>	3667	3679	3702	3714	3733	3745	3757	3774
<b>1900</b>	3750	3762	3774	3786	3798	3810	3821	3833
<b>2000</b>	3786	3802	3817	3829	3840	3850	3869	3905

S \ H	2200	2500	2800	3000	3500
<b>2200</b>	3929	4000	6110	6157	6245
<b>2500</b>	6324	6369	6426	6429	6512
<b>2700</b>	6483	6529	6574	6607	6679
<b>3000</b>	6702	6756	6810	6845	6924
<b>3200</b>	6733	6786	6845	6881	6964
<b>3400</b>	6869	6929	6976	7010	7095
<b>3600</b>	7083	7143	7202	7238	7345

Prices in bold refer to doors with heavy system

### Options:

- door leaf thickness 120 mm - surcharge of 30 EUR/m<sup>2</sup>
- window, size 400 mm x 600 mm - surcharge of 105 EUR
- lock with patent insert with possibility of opening from the inside - surcharge of 720 EUR
- door made in colour other than RAL 9010 - surcharge of 60 EUR/m<sup>2</sup>
- handle support (lever) for light-weight door - surcharge of 160 EUR (in heavy-weight door this option is included free of charge)

## PREMIUM SLIDING DOOR - STAINLESS - FERMOD ACCESSORIES - DPK-NF 60 T>0 °C (COLDROOM)

### Characteristic:

- **Door leaf thickness** 60 mm, produced on the press, by high pressure injection of PUR foam into door framework
- **Door finish** - stainless, acid-proof steel, type 1.4301, mat surface 2B or grinded surface 4N (option)
- **Door leaf core** - polyurethane foam, density of minimum 40 kg/m<sup>3</sup>
- **Frame** - complex and profiled, made of stainless, acid-proof steel, type 1.4301, mat surface 2B or grinded surface 4N (option)
- **Accessories** - delivered by FERMOD, made of aluminium
- **Lower element** - channel section made of stainless, acid-proof steel sheet, type 1.4301

<b>DPK-NF 60 SINGLE LEAF</b>								
<b>S \ H</b>	<b>1800</b>	<b>1900</b>	<b>2000</b>	<b>2100</b>	<b>2200</b>	<b>2300</b>	<b>2400</b>	<b>2500</b>
<b>800</b>	1410	1426	1442	1458	1474	1491	1507	1523
<b>900</b>	1437	1455	1472	1489	1507	1524	1541	1559
<b>1000</b>	1465	1493	1522	1536	1551	1565	1580	1595
<b>1100</b>	1521	1540	1560	1580	1599	1619	1639	1659
<b>1200</b>	1576	1597	1618	1639	1660	1681	1702	1723
<b>1300</b>	1623	1645	1667	1690	1712	1734	1756	1778
<b>1400</b>	1670	1694	1717	1740	1764	1787	1810	1834
<b>1500</b>	1724	1748	1773	1798	1822	1847	1871	1896
<b>1600</b>	1777	1798	1819	1840	1861	1897	1932	1958
<b>1700</b>	1893	1920	1947	1974	2001	2028	2055	2082
<b>1800</b>	2009	2037	2065	2094	2122	2150	2178	2206
<b>1900</b>	2060	2089	2119	2148	2178	2207	2237	2266
<b>2000</b>	2112	2147	2183	2219	2255	2291	2326	2451

<b>S \ H</b>	<b>2500</b>	<b>2600</b>	<b>2700</b>	<b>2800</b>	<b>3000</b>
<b>1500</b>	1896	1910	1978	2047	2115
<b>1600</b>	1958	2005	2051	2098	2144
<b>1700</b>	2082	2143	2204	2234	2558
<b>1800</b>	2206	2235	2263	2582	2604
<b>1900</b>	2266	2629	2674	2707	2742
<b>2000</b>	2451	2727	2784	2832	2880
<b>2200</b>	2756	2782	2894	2924	3064
<b>2400</b>	3106	3211	3317	3330	3343

Prices in bold refer to doors with heavy system, door leaf 80mm thickness

### Options:

- door leaf thickness 80 mm - surcharge of 30 EUR/m<sup>2</sup>
- window, size 400 mm x 600 mm - surcharge of 105 EUR
- lock with patent insert with possibility of opening from the inside - surcharge of 200 EUR
- handle support (lever) for light-weight door - surcharge of 160 EUR (in heavy-weight door this option is included free of charge)

## PREMIUM SLIDING DOOR - STAINLESS - FERMOD ACCESSORIES - DPK-NF 60 T>0 °C (COLDROOM)

### Characteristic:

- **Door leaf thickness** 60 mm, produced on the press, by high pressure injection of PUR foam into door framework
- **Door finish** - stainless, acid-proof steel, type 1.4301, mat surface 2B or grinded surface 4N (option)
- **Door leaf core** - polyurethane foam, density of minimum 40 kg/m<sup>3</sup>
- **Frame** - complex and profiled, made of stainless, acid-proof steel, type 1.4301, mat surface 2B or grinded surface 4N (option)
- **Accessories** - delivered by FERMOD, made of aluminium
- **Lower element** - channel section made of stainless, acid-proof steel sheet, type 1.4301

DPK-NF 60 DOUBLE LEAF								
S \ H	1800	1900	2000	2100	2200	2300	2400	2500
<b>1000</b>	3067	3083	3098	3119	3131			
<b>1100</b>	3095	3107	3119	3143	3155			
<b>1200</b>	3202	3214	3238	3250	3267	3286		
<b>1300</b>	3219	3238	3262	3274	3290	3321		
<b>1400</b>	3305	3333	3345	3362	3381	3400	3417	3452
<b>1500</b>	3333	3345	3364	3386	3405	3429	3452	3495
<b>1600</b>	3448	3469	3490	3510	3531	3552	3571	3595
<b>1700</b>	3471	3490	3512	3536	3560	3579	3607	3619
<b>1800</b>	3512	3543	3564	3588	3629	3650	3698	3719
<b>1900</b>	3655	3679	3702	3726	3750	3774	3798	3821
<b>2000</b>	3676	3702	3726	3750	3774	3805	3829	3881

S \ H	2200	2500	2800	3000	3500
<b>2200</b>	3857	3931	6167	6214	6286
<b>2500</b>	6345	6429	6521	6579	6714
<b>2700</b>	6393	6488	6583	6643	6798
<b>3000</b>	6512	6612	6714	6786	6952
<b>3200</b>	6560	6667	6774	6845	7024
<b>3400</b>	6798	6905	7024	7095	7274
<b>3600</b>	7012	7131	7250	7321	7512

Prices in bold refer to doors with heavy system, door leaf 80mm thickness

### Options:

- door leaf thickness 80 mm - surcharge of 30 EUR/m<sup>2</sup>
- window, size 400 mm x 600 mm - surcharge of 105 EUR
- lock with patent insert with possibility of opening from the inside - surcharge of 720 EUR
- handle support (lever) for light-weight door - surcharge of 160 EUR (in heavy-weight door this option is included free of charge)

## PREMIUM SLIDING DOOR - STAINLESS - FERMOD ACCESSORIES - DPK-NF 100 T>-25 °C (FREEZER)

### Characteristic:

- Door leaf thickness 100 mm, produced on the press, by high pressure injection of PUR foam into door framework
- Door finish - stainless, acid-proof steel, type 1.4301, mat surface 2B or grinded surface 4N (option)
- Door leaf core - polyurethane foam, density of minimum 40 kg/m<sup>3</sup>
- Heated frame - complex and profiled, made of stainless, acid-proof steel, type 1.4301, mat surface 2B or grinded surface 4N (option)
- Accessories - delivered by FERMOD, made of aluminium
- Lower element - channel section made of stainless, acid-proof steel sheet, type 1.4301

DPK-NF 100 SINGLE LEAF								
S \ H	1800	1900	2000	2100	2200	2300	2400	2500
800	1714	1736	1758	1780	1802	1825	1847	1869
900	1767	1790	1814	1838	1861	1885	1908	1932
1000	1820	1845	1870	1895	1920	1945	1970	1995
1100	1856	1883	1909	1936	1962	1989	2015	2042
1200	1893	1921	1949	1977	2004	2032	2060	2088
1300	1983	2014	2044	2075	2105	2136	2166	2197
1400	2073	2106	2139	2173	2206	2239	2272	2305
1500	2099	2131	2164	2196	2228	2260	2292	2324
1600	2126	2159	2193	2227	2260	2294	2328	2361
1700	2228	2263	2298	2333	2368	2403	2438	2473
1800	2330	2367	2403	2439	2476	2512	2549	2585
1900	2391	2429	2467	2505	2543	2581	2619	2657
2000	2453	2498	2544	2590	2636	2682	2728	2857

S \ H	2500	2600	2700	2800	3000
1500	2324	2347	2417	2487	2557
1600	2361	2437	2497	2513	2529
1700	2473	2528	2578	2618	3256
1800	2585	2618	2658	3225	3268
1900	2657	3142	3193	3243	3294
2000	2857	3282	3336	3390	3444
2200	3364	3421	3479	3537	3594
2400	3684	3749	3813	3877	3942

Prices in bold refer to doors with heavy system

### Options:

- door leaf thickness 120 mm - surcharge of 30 EUR/m<sup>2</sup>
- door leaf thickness 150 mm - surcharge of 60 EUR/m<sup>2</sup>
- window, size 400 mm x 600 mm - surcharge of 105 EUR
- lock with patent insert with possibility of opening from the inside - surcharge of 200 EUR
- handle support (lever) for light-weight door - surcharge of 160 EUR (in heavy-weight door this option is included free of charge)

## PREMIUM SLIDING DOOR - STAINLESS - FERMOD ACCESSORIES - DPK-NF 100 T>-25 °C (FREEZER)

### Characteristic:

- Door leaf thickness 100 mm, produced on the press, by high pressure injection of PUR foam into door framework
- Door finish - stainless, acid-proof steel, type 1.4301, mat surface 2B or grinded surface 4N (option)
- Door leaf core - polyurethane foam, density of minimum 40 kg/m<sup>3</sup>
- Heated frame - complex and profiled, made of stainless, acid-proof steel, type 1.4301, mat surface 2B or grinded surface 4N (option)
- Accessories - delivered by FERMOD, made of aluminium
- Lower element - channel section made of stainless, acid-proof steel sheet, type 1.4301

DPK-NF 100 DOUBLE LEAF								
S \ H	1800	1900	2000	2100	2200	2300	2400	2500
<b>1000</b>	3424	3440	3455	3476	3488			
<b>1100</b>	3452	3464	3476	3500	3512			
<b>1200</b>	3560	3571	3595	3607	3624	3643		
<b>1300</b>	3576	3595	3619	3631	3648	3679		
<b>1400</b>	3662	3690	3702	3719	3738	3757	3774	3810
<b>1500</b>	3690	3702	3721	3743	3762	3786	3810	3852
<b>1600</b>	3805	3826	3848	3867	3888	3910	3929	3952
<b>1700</b>	3829	3848	3869	3893	3917	3936	3964	3976
<b>1800</b>	3869	3900	3921	3945	3986	4007	4055	4076
<b>1900</b>	4012	4036	4060	4083	4107	4131	4155	4179
<b>2000</b>	4033	4060	4083	4107	4131	4162	4186	4238

S \ H	2200	2500	2800	3000	3500
<b>2200</b>	4214	4288	6524	6571	6643
<b>2500</b>	6702	6786	6879	6936	7071
<b>2700</b>	6750	6845	6940	7000	7155
<b>3000</b>	6869	6969	7071	7143	7310
<b>3200</b>	6917	7024	7131	7202	7381
<b>3400</b>	7155	7262	7381	7452	7631
<b>3600</b>	7369	7488	7607	7679	7869

Prices in bold refer to doors with heavy system

### Options:

- door leaf thickness 120 mm - surcharge of 30 EUR/m<sup>2</sup>
- window, size 400 mm x 600 mm - surcharge of 105 EUR
- lock with patent insert with possibility of opening from the inside - surcharge of 720 EUR
- handle support (lever) for light-weight door - surcharge of 160 EUR (in heavy-weight door this option is included free of charge)



## GAS-TIGHT SLIDING DOORS, “DPG” TYPE

### APPLICATION

DPG doors are applied in rooms with controlled atmosphere (KA), which is the best technology to store fruits and vegetables. In standard coldrooms fruits are stored in normal atmosphere containing 21% of oxygen and 0% carbon dioxide. In controlled atmosphere the content of oxygen is below 3% and the content of carbon dioxide is below 5%. This leads to prolongation of fruits and vegetables store period without losing their quality.

DPG - lightweight, up to 120 kg

DPG - heavyweight, up to 400 kg

### DOOR LEAF

DP doors are available in 2 versions: In DSPG (STANDARD) version door leaf is made of sandwich panel with PIR core and framed by steel channel section. In DPKG (PREMIUM) version door leaf is produced on the press, by high pressure injection of PUR foam into door framework. The density of PUR core is not less than 40 kg/m<sup>3</sup>.

#### Available thicknesses:

- 80 mm

#### STANDARD door leaf finish (sandwich panel):

- Galvanized steel sheet (L) thickness 0,5 mm, coated with polyester paint in white colour RAL 9010

#### PREMIUM door leaf finish:

- Stainless, acid-proof steel (N), type 1.4301, thickness 0,8 mm, mat surface 2B
- Galvanized steel sheet (L) thickness 0,75 mm, coated with polyester paint in white colour RAL 9010

Door leaf is equipped with gasket delivered by FERMOD (F), eccentric ball valves one for gas filling of the room, the other in order to take samples from the room atmosphere clamps to ensure door leaf tightness, revision window 528 x 828 mm, closed with a key.

### FRAME TYPE

In both DSPG and DPKG version door frame is filled with PUR foam. It is made of stainless, acid-proof steel (N), type 1.4301, thickness 0,8 mm, mat surface 2B or galvanized steel sheet (T) thickness 0,75 mm, coated with polyester paint in white colour (RAL 9010).

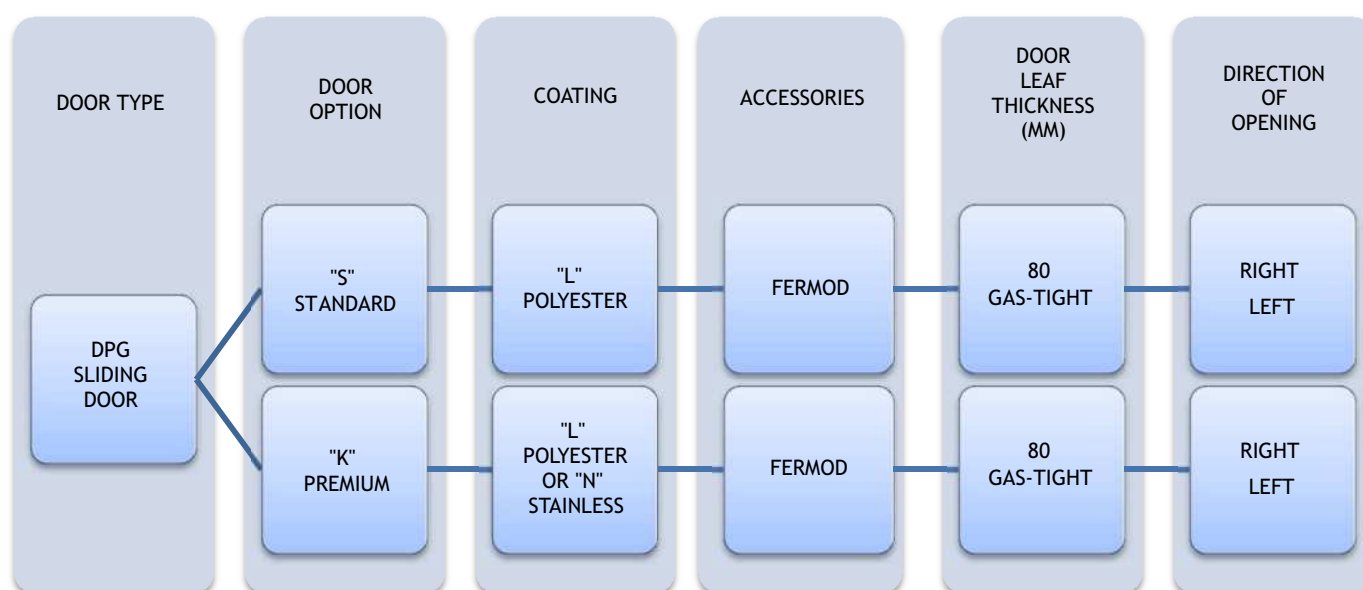
Lock is delivered by RAHRBACH. It is equipped with patent insert with possibility of emergency opening from the inside even if the door is locked.

## ACCESSORIES

- FERMOD accessories (F), aluminium rail - lightweight type
- FERMOD accessories (F), galvanized steel or stainless steel rail - heavyweight type
- FERMOD accessories (F), stainless steel rail - lightweight type (option)
- FERMOD accessories (F), stainless steel rail - heavyweight type (option)

## OPTIONS

- Untypical door leaf finish:
  - Stainless, acid-proof steel (N), type 1.4301, thickness 0,8 mm, grinded surface 4B or grained surface
  - Galvanized steel sheet (L) coated with polyester paint other than white (RAL 9010)
- Availability to produce door with and without a threshold (lower element is installed in the floor)
- Flashing of the door opening



Enquiry/order example:



**DPKG-NF 80** - Premium gas-tight coldroom sliding door, stainless steel finish, FERMOD accessories, door leaf thickness 80 mm, direction of opening to the right.



## STANDARD SLIDING DOOR - POLYESTER - FERMOD ACCESSORIES - DPSG-LF 80 T>0 °C (GAS-TIGHT)

### Characteristic:

- Door leaf made of sandwich panel with PIR core 80 mm
- Door finish - galvanized steel sheet coated with polyester paint in white colour RAL 9010
- Door leaf framing - steel channel section, made of stainless, acid-proof steel sheet, type 1.4301
- Frame - complex and profiled, made of steel sheet coated with polyester paint in RAL 9010
- Accessories - delivered by FERMOD, made of aluminium
- Lower element - channel section made of stainless, acid-proof steel sheet, type 1.4301
- Eccentric ball valves - one for gas filling of the room, the other in order to take samples from the room atmosphere
- clamps - ensure door leaf tightness
- revision window - dimension of 528 x 828 mm

DPSG-LF 80 SINGLE LEAF								
S \ H	1800	1900	2000	2100	2200	2300	2400	2500
<b>800</b>	2151	2159	2168	2176	2185	2194	2202	2211
<b>900</b>	2167	2177	2186	2196	2205	2214	2224	2233
<b>1000</b>	2184	2194	2204	2215	2225	2235	2245	2256
<b>1100</b>	2307	2318	2329	2340	2351	2362	2373	2384
<b>1200</b>	2367	2379	2391	2403	2415	2427	2439	2451
<b>1300</b>	2401	2414	2427	2440	2453	2466	2479	2492
<b>1400</b>	2436	2450	2463	2477	2491	2505	2518	2532
<b>1500</b>	2472	2486	2501	2515	2530	2544	2559	2573
<b>1600</b>	2508	2523	2539	2554	2569	2585	2600	2615
<b>1700</b>	2610	2626	2642	2658	2673	2689	2705	2721
<b>1800</b>	2627	2643	2660	2676	2693	2710	2726	2743
<b>1900</b>	2669	2687	2704	2721	2734	2748	2761	2775
<b>2000</b>	2711	2730	2748	2766	2784	2803	2821	2839

S \ H	2500	2600	2700	2800	3000	3200	3400	3600	3800	4000
<b>1500</b>	2519	2552	2571	2590	2609	2740	2771	2801	2832	2862
<b>1600</b>	2560	2644	2664	2684	2704	2841	2872	2904	2936	2967
<b>1700</b>	2721	2736	2757	2778	2800	2941	2974	3007	3040	3072
<b>1800</b>	2743	2759	2782	2804	2826	2970	3004	3039	3073	3108
<b>1900</b>	2775	2782	2805	2829	2852	2999	3035	3071	3107	3143
<b>2000</b>	2839	2857	2882	2906	2931	3083	3121	3159	3196	3234
<b>2200</b>	2885	2910	2934	2959	2984	3140	3182	3223	3264	3667
<b>2400</b>	2982	3016	3050	3083	3117	3273	3307	3342	3772	3819
<b>2600</b>	3150	3180	3209	3239	3269	3349	3430	3879	3925	3971
<b>2800</b>	3316	3352	3387	3423	3459	3494	3892	3951	4011	4070
<b>3000</b>	3398	3432	3466	3500	3534	3960	4012	4065	4117	4169

Prices in bold refer to doors with heavy system

### Options:

- lock with patent insert with possibility of opening from the inside - surcharge of 200 EUR
- handle support (lever) for light-weight door - surcharge of 190 EUR (in heavy-weight door this option is included free of charge)

## PREMIUM SLIDING DOOR - POLYESTER - FERMOD ACCESSORIES - DPKG-LF 80 T>0 °C (GAS-TIGHT)

### Characteristic:

- Door leaf thickness 80 mm, produced on the press, by high pressure injection of PUR foam into door framework
- Door finish - galvanized steel sheet coated with polyester paint in white colour RAL 9010
- Door leaf core - polyurethane foam, density of minimum 40 kg/m<sup>3</sup>
- Frame - complex and profiled, made of steel sheet coated with polyester paint in RAL 9010
- Accessories - delivered by FERMOD, made of aluminium
- Lower element - channel section made of stainless, acid-proof steel sheet, type 1.4301
- Eccentric ball valves - one for gas filling of the room, the other in order to take samples from the room atmosphere
- clamps - ensure door leaf tightness
- revision window - dimension of 528 x 828 mm

DPKG-LF 80 SINGLE LEAF								
S \ H	1800	1900	2000	2100	2200	2300	2400	2500
<b>800</b>	2255	2263	2272	2280	2289	2297	2306	2314
<b>900</b>	2271	2281	2290	2299	2309	2318	2327	2336
<b>1000</b>	2288	2298	2308	2318	2328	2338	2348	2358
<b>1100</b>	2339	2350	2361	2372	2383	2394	2405	2416
<b>1200</b>	2435	2448	2460	2472	2484	2496	2508	2520
<b>1300</b>	2471	2484	2496	2509	2522	2534	2547	2559
<b>1400</b>	2507	2519	2531	2543	2556	2570	2585	2599
<b>1500</b>	2542	2557	2573	2588	2603	2619	2634	2650
<b>1600</b>	2577	2561	2606	2621	2635	2661	2686	2701
<b>1700</b>	2702	2719	2736	2753	2770	2786	2803	2820
<b>1800</b>	2827	2843	2859	2875	2891	2908	2924	2940
<b>1900</b>	2871	2887	2904	2921	2938	2955	2971	2988
<b>2000</b>	2914	2934	2955	2975	2996	3016	3037	3174

S \ H	2500	2600	2700	2800	3000
<b>1500</b>	2650	2665	2714	2763	2813
<b>1600</b>	2701	2746	2776	2806	2837
<b>1700</b>	2820	2925	2962	3024	3373
<b>1800</b>	2940	3013	3085	3414	3408
<b>1900</b>	2988	3347	3403	3399	3428
<b>2000</b>	3174	3375	3425	3463	3502
<b>2200</b>	3394	3437	3480	3527	3575
<b>2400</b>	3553	3620	3688	3695	3702

Prices in bold refer to doors with heavy system

### Options:

- lock with patent insert with possibility of opening from the inside - surcharge of 200 EUR
- door made in colour other than RAL 9010 - surcharge of 60 EUR/m<sup>2</sup>
- handle support (lever) for light-weight door - surcharge of 190 EUR (in heavy-weight door this option is included free of charge)

## PREMIUM SLIDING DOOR - STAINLESS - FERMOD ACCESSORIES - DPKG-NF 80 T>0 °C (GAS-TIGHT)

### Characteristic:

- Door leaf thickness 80 mm, produced on the press, by high pressure injection of PUR foam into door framework
- Door finish -stainless, acid-proof steel, type 1.4301, mat surface 2B or grinded surface 4N (option)
- Door leaf core - polyurethane foam, density of minimum 40 kg/m<sup>3</sup>
- Heated frame - complex and profiled, made of stainless, acid-proof steel, type 1.4301, mat surface 2B or grinded surface 4N (option)
- Accessories - delivered by FERMOD, made of aluminium
- Lower element - channel section made of stainless, acid-proof steel sheet, type 1.4301
- Eccentric ball valves - one for gas filling of the room, the other in order to take samples from the room atmosphere
- clamps - ensure door leaf tightness
- revision window - dimension of 528 x 828 mm

DPKG-NF 80 SINGLE LEAF								
S \ H	1800	1900	2000	2100	2200	2300	2400	2500
<b>800</b>	2555	2573	2591	2609	2628	2646	2664	2682
<b>900</b>	2586	2606	2625	2645	2664	2684	2703	2723
<b>1000</b>	2617	2649	2681	2698	2714	2731	2747	2763
<b>1100</b>	2680	2702	2724	2746	2769	2791	2813	2836
<b>1200</b>	2742	2766	2790	2813	2837	2861	2884	2908
<b>1300</b>	2795	2820	2845	2870	2895	2920	2945	2970
<b>1400</b>	2848	2875	2901	2927	2954	2980	3006	3033
<b>1500</b>	2909	2936	2964	2992	3020	3047	3075	3103
<b>1600</b>	2969	2993	3017	3040	3063	3103	3144	3173
<b>1700</b>	3100	3130	3161	3191	3221	3252	3282	3313
<b>1800</b>	3230	3262	3293	3325	3357	3389	3421	3452
<b>1900</b>	3288	3321	3354	3387	3421	3454	3487	3520
<b>2000</b>	3346	3386	3426	3467	3507	3547	3587	3728

S \ H	2500	2600	2700	2800	3000
<b>1500</b>	3103	3150	3218	3286	3354
<b>1600</b>	3173	3225	3278	3330	3383
<b>1700</b>	3313	3381	3449	3483	3923
<b>1800</b>	3452	3484	3516	3950	3976
<b>1900</b>	3520	4005	4057	4095	4153
<b>2000</b>	3728	4119	4185	4240	4296
<b>2200</b>	4152	4183	4313	4347	4509
<b>2400</b>	4377	4494	4610	4412	4639

Prices in bold refer to doors with heavy system

### Options:

- lock with patent insert with possibility of opening from the inside - surcharge of 200 EUR
- handle support (lever) for light-weight door - surcharge of 190 EUR (in heavy-weight door this option is included free of charge)

## UNIVERSAL HINGED DOORS, “DRU” TYPE



### APPLICATION

DRU are multifunctional hinged doors which can be applied in different conditions and locations, such as industrial objects, production facilities store houses, etc. The structure of the door ensures its strength and durability. High insulation value has been achieved thanks to polyurethane foam core (PUR).

### DOOR LEAF

Door leaf is produced on the press, by high pressure injection of PUR foam into door framework. The density of PUR core is not less than 40 kg/m<sup>3</sup>.

#### Available thickness

- 50mm - single or double-leaf

#### Door leaf finish

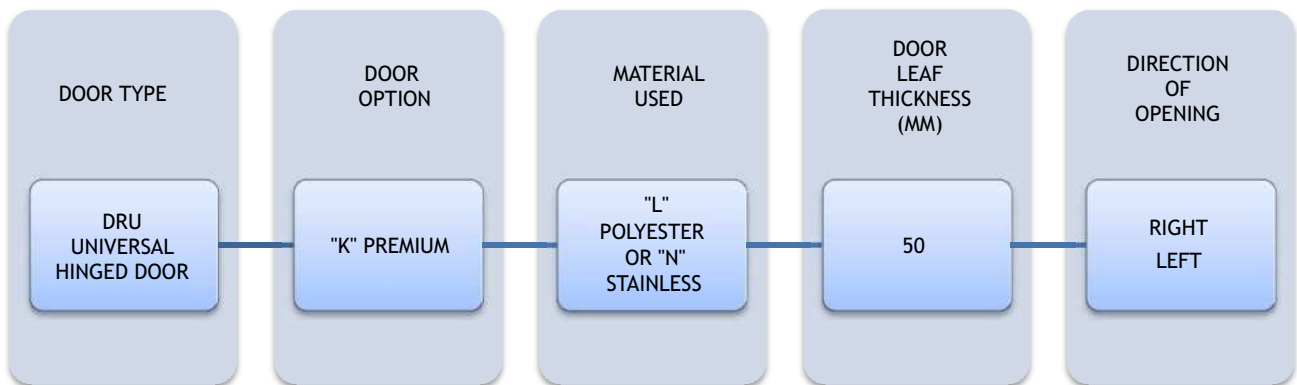
- stainless, stainless, acid-proof steel (N), type 1.4301, thickness 0,8 mm, mat surface 2B
- galvanized steel sheet 0,75 mm coated with polyester paint in white colour RAL 9010

### ACCESSORIES

- lock with patent insert
- handle or knob made of stainless, acid-proof steel, type 1.4301
- hinges made of stainless, acid-proof steel, type 1.4301
- bolt in double-leaf door

## OPTIONS

- Untypical door leaf finish:
  - Stainless, acid-proof steel (N), type 1.4301, thickness 0,8 mm, grinded surface 4B or grained surface
  - Galvanized steel sheet (T) thickness 0,75 mm, coated with polyester paint other than white
  - Polyester laminate PECOLIT in RAL 9016 with stainless, acid-proof door leaf framing (N), type 1.4301
- Availability to produce door with and without a threshold (lower element is installed in the floor)
- Door pump
- Electric hook
- Door windows:
  - Round window ø280 mm
  - Window in a different shape (special enquiry)
  - Execution of opening for a individual glazing
- Ventilation bar:
  - Dimension 455 x 135 mm
  - Other dimension and shape - individual enquiry
- Flashing of the door opening



Enquiry/order example:



**DRU-L** - Universal hinged door, polyester paint finish, door leaf thickness 50 mm, direction of opening to the right.

## UNIVERSAL HINGED DOORS, STAINLESS DRU-N T>0 °C

### Characteristic:

- **Door leaf** thickness 50 mm, produced on the press, by high pressure injection of PUR foam into door framework
- **Door finish** - stainless, acid-proof steel, type 1.4301, mat surface 2B or grinded surface 4N (option)
- **Door leaf core** - polyurethane foam, density of minimum 40 kg/m<sup>3</sup>
- **Door closing** - lock with patent insert + stainless, acid-proof handle
- **Hinges** - stainless, acid-proof, type 1.4301
- **Frame** - complex and profiled, made of stainless, acid-proof steel, type 1.4301, mat surface 2B or grinded surface 4N (option)

DRU-N 50 SINGLE LEAF			
S \ H	2000	2100	2200
<b>800</b>	767	787	807
<b>900</b>	819	838	858
<b>1000</b>	851	870	888
<b>1100</b>	878	930	981
<b>1200</b>	955	972	1037
<b>1300</b>	986	1006	1053
<b>1400</b>	1017	1041	1069
<b>1500</b>	1048	1076	1077

DRU-N 50 DOUBLE LEAF							
S \ H	2000	2100	2200	2300	2400	2500	2600
<b>1200</b>	1227	1269	1312	1338	1365	1392	1419
<b>1300</b>	1259	1302	1346	1374	1402	1430	1459
<b>1400</b>	1290	1335	1380	1410	1439	1469	1498
<b>1500</b>	1322	1368	1415	1446	1477	1507	1538
<b>1600</b>	1354	1402	1450	1482	1514	1546	1578
<b>1700</b>	1386	1435	1484	1517	1551	1584	1618
<b>1800</b>	1417	1468	1518	1553	1588	1623	1658
<b>1900</b>	1503	1546	1589	1625	1661	1698	1734
<b>2000</b>	1589	1624	1659	1697	1734	1772	1809
<b>2100</b>	1621	1662	1702	1741	1780	1819	1871
<b>2200</b>	1654	1700	1746	1786	1826	1866	1932
<b>2300</b>	1686	1737	1789	1830	1872	1913	1972
<b>2400</b>	1718	1775	1832	1875	1918	1960	2012
<b>2500</b>	1750	1813	1875	1919	1963	2008	2052

Grained door surface - surcharge of 16%

### Options:

- window, size 400 mm x 600 mm - surcharge of 105 EUR
- ventilation bar - surcharge of 60 EUR

# UNIVERSAL HINGEND DOORS, POLYESTER DRU-L T>0 °C

## Characteristic:

- **Door leaf** thickness 50 mm, produced on the press, by high pressure injection of PUR foam into door framework
- **Door finish** - galvanized steel sheet coated with polyester paint in white colour RAL 9010
- **Door leaf core** - polyurethane foam, density of minimum 40 kg/m<sup>3</sup>
- **Door closing** - lock with patent insert + stainless, acid-proof handle
- **Hinges** - stainless, acid-proof, type 1.4301
- **Frame** - complex and profiled, made of stainless, acid-proof steel, type 1.4301, mat surface 2B or grinded surface 4N (option)

DRU-L 50 SINGLE LEAF			
S \ H	2000	2100	2200
<b>800</b>	603	613	623
<b>900</b>	604	614	623
<b>1000</b>	621	647	673
<b>1100</b>	651	692	733
<b>1200</b>	726	737	779
<b>1300</b>	744	756	795
<b>1400</b>	753	765	801
<b>1500</b>	770	784	809

DRU-L 50 DOUBLE LEAF								
S \ H	2000	2100	2200	2300	2400	2500	2600	
<b>1200</b>	1000	1014	1029	1043	1057	1088	1119	
<b>1300</b>	1017	1032	1047	1062	1077	1108	1140	
<b>1400</b>	1034	1050	1065	1081	1096	1129	1161	
<b>1500</b>	1051	1067	1084	1100	1116	1149	1182	
<b>1600</b>	1068	1085	1102	1119	1136	1170	1203	
<b>1700</b>	1085	1102	1120	1138	1155	1190	1224	
<b>1800</b>	1102	1120	1138	1157	1175	1210	1245	
<b>1900</b>	1157	1185	1212	1222	1231	1268	1305	
<b>2000</b>	1173	1209	1246	1246	1247	1285	1325	
<b>2100</b>	1231	1250	1309	1314	1319	1356	1407	
<b>2200</b>	1258	1284	1338	1347	1357	1391	1453	
<b>2300</b>	1283	1318	1366	1380	1395	1425	1475	
<b>2400</b>	1309	1352	1395	1414	1433	1460	1496	
<b>2500</b>	1335	1379	1423	1446	1471	1494	1518	

## Options:

- door made in colour other than RAL 9010 - surcharge of 60 EUR/m<sup>2</sup>
- window, size 400 mm x 600 mm - surcharge of 105 EUR
- ventilation bar - surcharge of 60 EUR

## SWING DOORS, “DW” TYPE



### APPLICATION

DW doors are great solution for industrial gateways with high number of passages (production facilities, supermarkets, restaurants, shops, etc.). The structure of the door ensures its strength and durability. High insulation value has been achieved thanks to polyurethane foam core (PUR).

### DOOR LEAF

Door leaf is produced on the press, by high pressure injection of PUR foam into door framework. The density of PUR core is not less than  $40 \text{ kg/m}^3$ .

#### DOOR LEAF FINISH

- Stainless, stainless, acid-proof steel (N), type 1.4301, thickness 0,8 mm, mat surface 2B
- Galvanized steel sheet 0,75 mm coated with polyester paint in white colour RAL 9010

Swing doors are equipped with round stainless, acid-proof window, diameter of  $\varnothing 280 \text{ mm}$  (standard).

Swing doors can be produced in single or double-leaf option.

### FRAME

Swing doors DW installed to sandwich panel are equipped in frame in the shape of channel section, in case the DW doors are installed to brick wall are equipped in installation profile. Both channel section and installation profile are made of made of stainless, acid-proof steel, type 1.4301 or galvanized steel sheet coated with polyester paint in white colour RAL 9010.

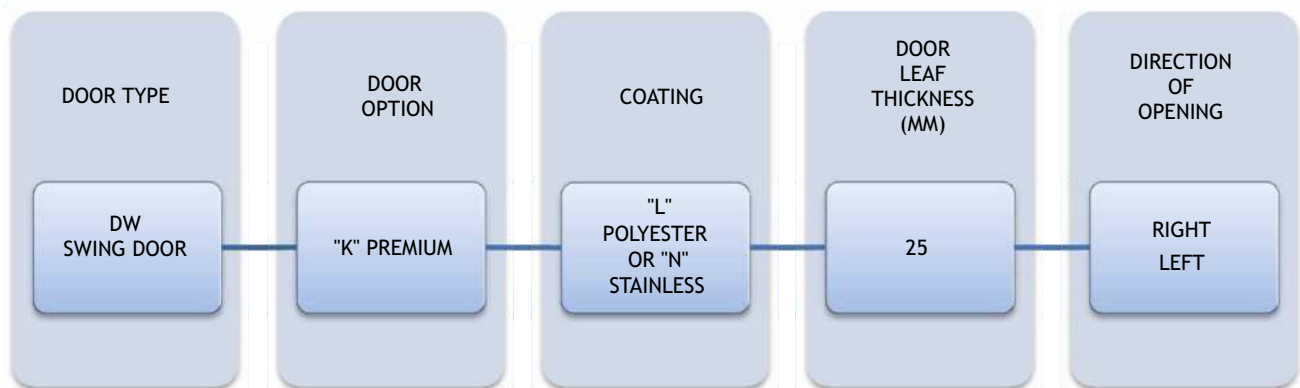
### HINGES

Hinges are delivered by FERMOD and are made of stainless, acid-proof steel or PVC with “STOP” function.

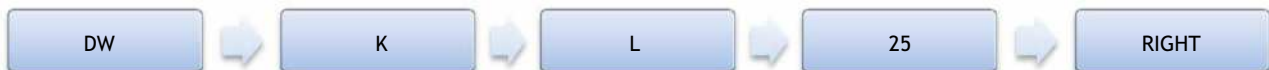


## OPTION

- Untypical door leaf finish:
  - Stainless, acid-proof steel (N), type 1.4301, thickness 0,8 mm, grinded surface 4B or grained surface
  - Galvanized steel sheet (T) thickness 0,75 mm, coated with polyester paint other than white
  - Polyester laminate PECOLIT in RAL 9016 with stainless, acid-proof door leaf framing (N), type 1.4301
- Door windows:
  - Window in a different shape (special enquiry)
  - Execution of opening for a individual glazing
- Flashing of the door opening
- Execution in composite material PE 500



Enquiry/order example:



**DW-L** - swing door, polyester paint finish, door leaf thickness 25 mm, direction of opening to the right.

## SWING DOORS, POLYESTER DW-L T>0 °C

### Characteristic:

- **Door leaf** thickness 25 mm, produced on the press, by high pressure injection of PUR foam into door framework
- **Door finish** - galvanized steel sheet coated with polyester paint in white colour RAL 9010
- **Door leaf core** - polyurethane foam, density of minimum 40 kg/m<sup>3</sup>
- **Hinges** - stainless, acid-proof, type 1.4301
- **Window** - round shape, stainless, acid-proof, type 1.4301
- **Buffers** preventing against damages

<b>DW-L SINGLE LEAF</b>						
S \ H	2000	2100	2200	2300	2400	2500
<b>700</b>	857	864	871	878	885	892
<b>800</b>	872	880	887	895	902	910
<b>900</b>	886	895	903	912	920	929
<b>1000</b>	901	910	919	/	/	/
<b>1100</b>	916	925	935	/	/	/
<b>1200</b>	930	941	952	/	/	/
<b>1300</b>	945	956	968	/	/	/

<b>DW-L DOUBLE LEAF</b>						
S \ H	2000	2100	2200	2300	2400	2500
<b>1200</b>	1409	1421	1433	1445	1457	1470
<b>1300</b>	1433	1446	1459	1472	1485	1498
<b>1400</b>	1457	1471	1485	1498	1512	1526
<b>1500</b>	1482	1496	1510	1525	1539	1553
<b>1600</b>	1506	1521	1536	1551	1566	1581
<b>1700</b>	1530	1546	1561	1577	1593	1609
<b>1800</b>	1554	1570	1587	1604	1621	1637
<b>1900</b>	1578	1595	1613	1630	1647	1665
<b>2000</b>	1602	1620	1638	/	/	/
<b>2100</b>	1626	1645	1664	/	/	/
<b>2200</b>	1650	1670	1689	/	/	/
<b>2300</b>	1674	1695	1715	/	/	/
<b>2400</b>	1698	1720	1741	/	/	/
<b>2500</b>	1722	1744	1766	/	/	/
<b>2600</b>	1746	1769	1792	/	/	/

### Options:

- door made in colour other than RAL 9010 - surcharge of 60 EUR/m<sup>2</sup>

## SWING DOORS, STAINLESS DW-N T>0 °C

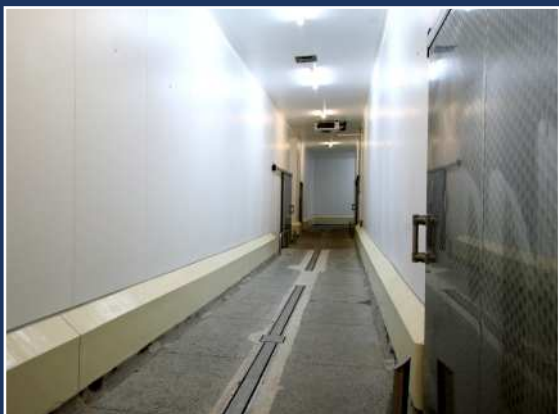
### Characteristic:

- **Door leaf** thickness 25 mm, produced on the press, by high pressure injection of PUR foam into door framework
- **Door finish** - stainless, acid-proof steel, type 1.4301, mat surface 2B or grinded surface 4N (option)
- **Door leaf core** - polyurethane foam, density of minimum 40 kg/m<sup>3</sup>
- **Hinges** - stainless, acid-proof, type 1.4301
- **Window** - round shape, stainless, acid-proof, type 1.4301
- **Buffers** preventing against damages

DW-N SINGLE LEAF						
S \ H	2000	2100	2200	2300	2400	2500
700	992	1007	1022	1037	1052	1068
800	1023	1040	1056	1073	1089	1106
900	1054	1072	1090	1108	1126	1144
1000	1085	1105	1124			
1100	1116	1137	1158			
1200	1148	1170	1192			
1300	1178	1202	1226			

DW-N DOUBLE LEAF						
S \ H	2000	2100	2200	2300	2400	2500
1200	1593	1615	1638	1661	1684	1707
1300	1631	1656	1680	1704	1729	1753
1400	1670	1696	1722	1748	1773	1799
1500	1709	1736	1763	1791	1818	1845
1600	1748	1776	1805	1834	1862	1891
1700	1786	1816	1847	1877	1907	1937
1800	1825	1857	1888	1920	1952	1983
1900	1864	1897	1930	1963	1996	2029
2000	1903	1937	1972			
2100	1942	1977	2013			
2200	1980	2018	2055			
2300	2019	2058	2097			
2400	2058	2098	2138			
2500	2097	2138	2180			
2600	2135	2178	2222			

[www.panelitech.pl](http://www.panelitech.pl)



**PANELTECH<sup>®</sup>**